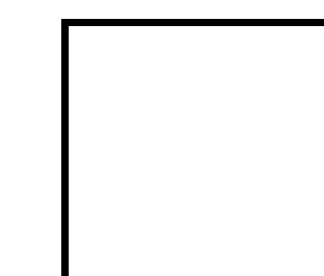


Reserved for permit stamp

159 South Jackson St., Suite 400
Seattle, Washington 98104 USA
P: 206.462.3910
www.olsonkundig.com

Olson Kundig

PROJECT
PROJECT NAME : SOMMET BLANC
PROJECT ADDRESS



White Summit Development, LLC
PO Box 980022
Park City, Utah 84098

Acoustic Consultant
BRC Acoustics
1032 1st Ave., Suite 620
Seattle, WA 98101

CLOWARD
WATER PROTECTION
15400 1st Ave., Suite 200
Seattle, WA 98148

Landscaping Architect
EPG Design
5948 South High Tech Drive, Suite 100
Midvale, Utah 84047

Specifications Writer
Fridley Group
88 Mahall Road
Midvale, UT

Code Consultant
Holmes
600 1st Avenue, Suite 200A
Seattle, WA 98104

Fire Protection Engineer
Jensen Hughes
One Research Drive, Suite 305G
Westborough, MA 01581

Vertical Transportation Consultant
Larson Bates
19515 North Creek Parkway, Suite 304
Bothell, WA 98011

Structural Engineer
Magnusson Karmic Associates
1301 5th Ave., Suite 3200
Seattle, WA 98101

Lighting Designer
DL
1319 SE MLK Blvd., Suite 210
Portland, Oregon 97219

Building Envelope Consultant
RKH
2101 N 34th St
Seattle, WA 98103

Accessibility Consultant
Studio Pacifica
2144 Westlake Ave N, Suite F
Seattle, WA 98109

MEP Engineer
WSP USA
1001 Fourth Ave., Suite 3100
Seattle, WA 98154

principal architect: CH20
project manager: CH20
drawn by: CH20

checked by: CH20
job no.: XXXXX
date: 05/17/2024

revisions:

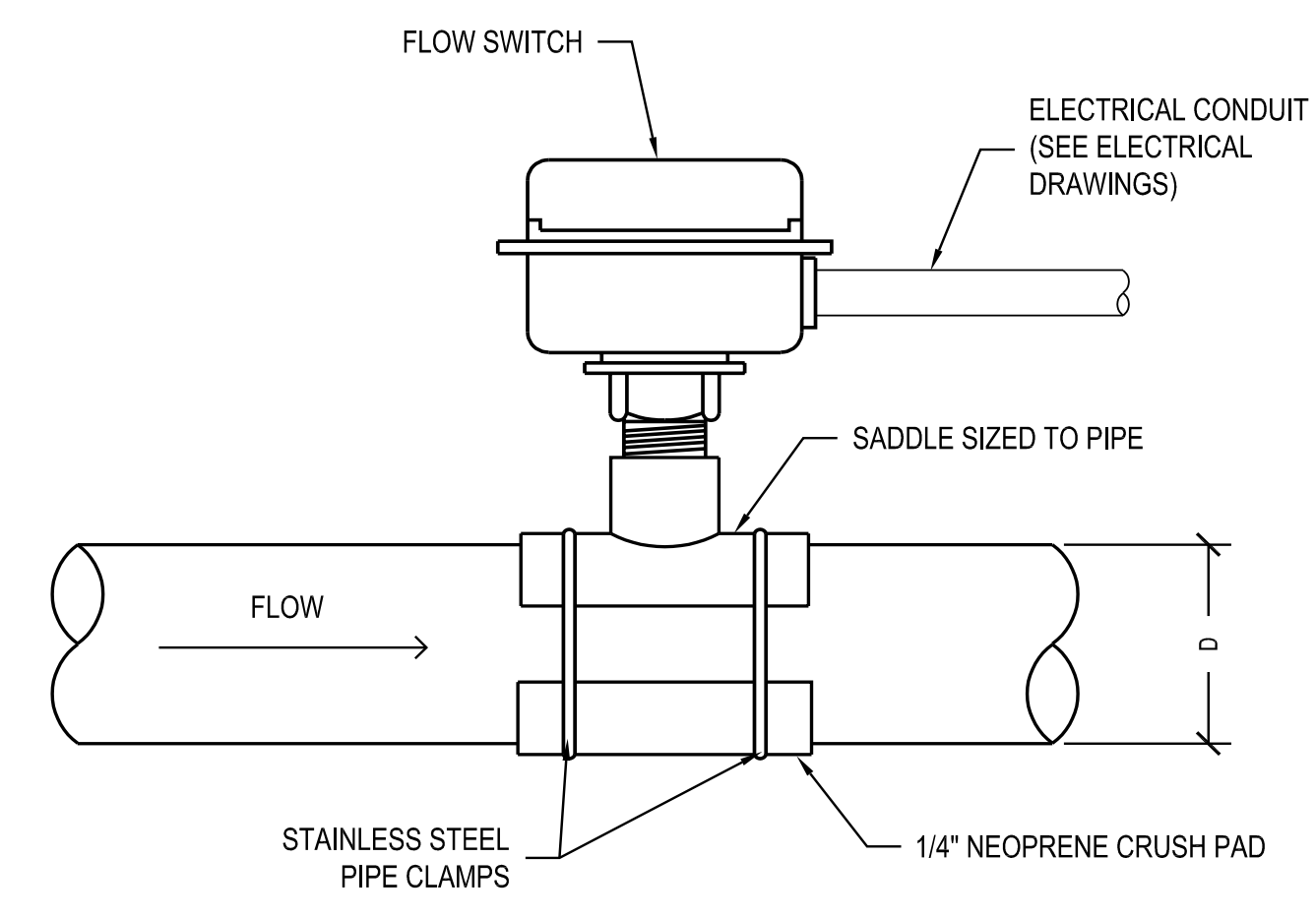
DRAWING STATUS

IFC SET 2 OF 3

05/17/2024

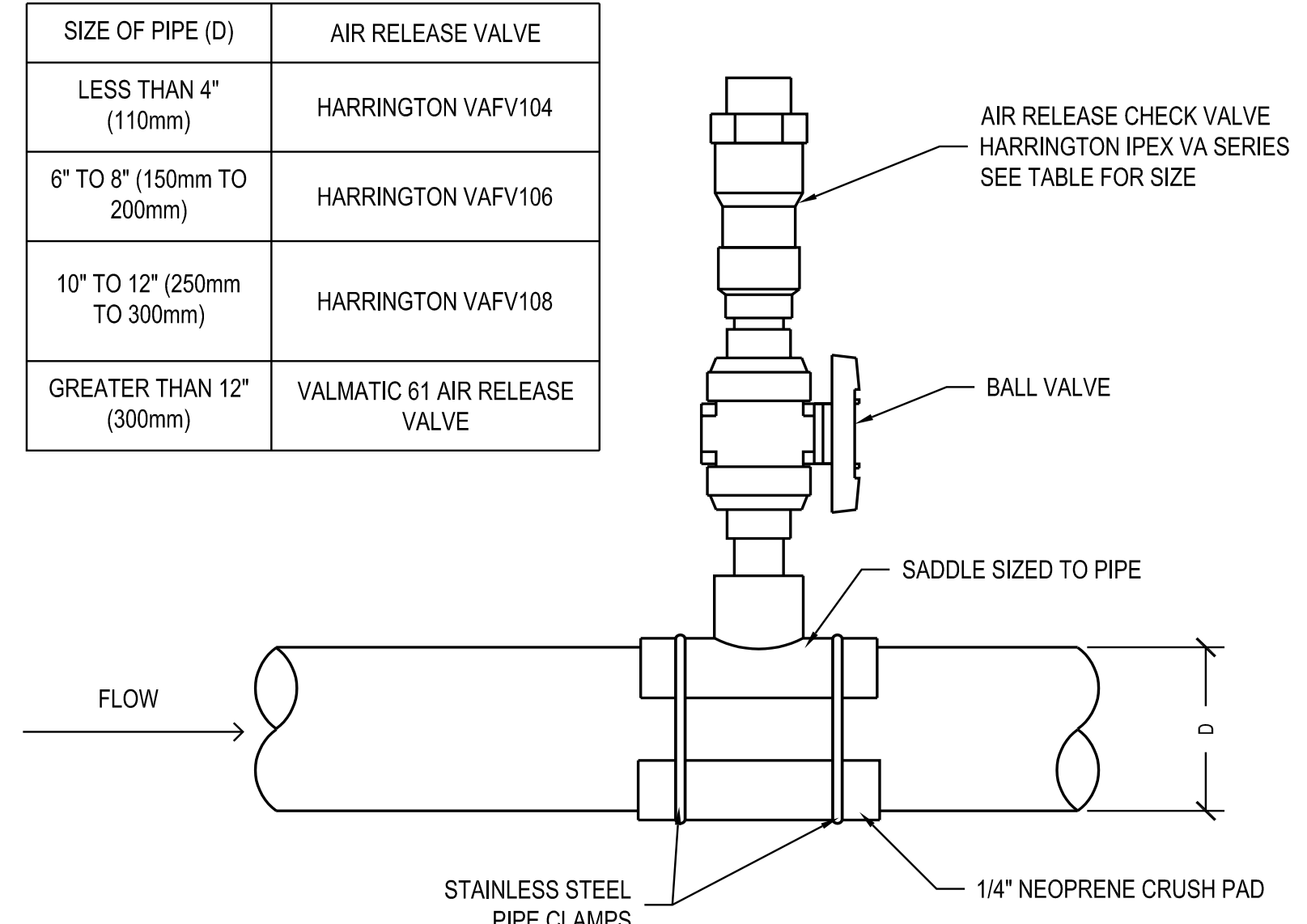
GENERAL DETAILS

W5-1.04



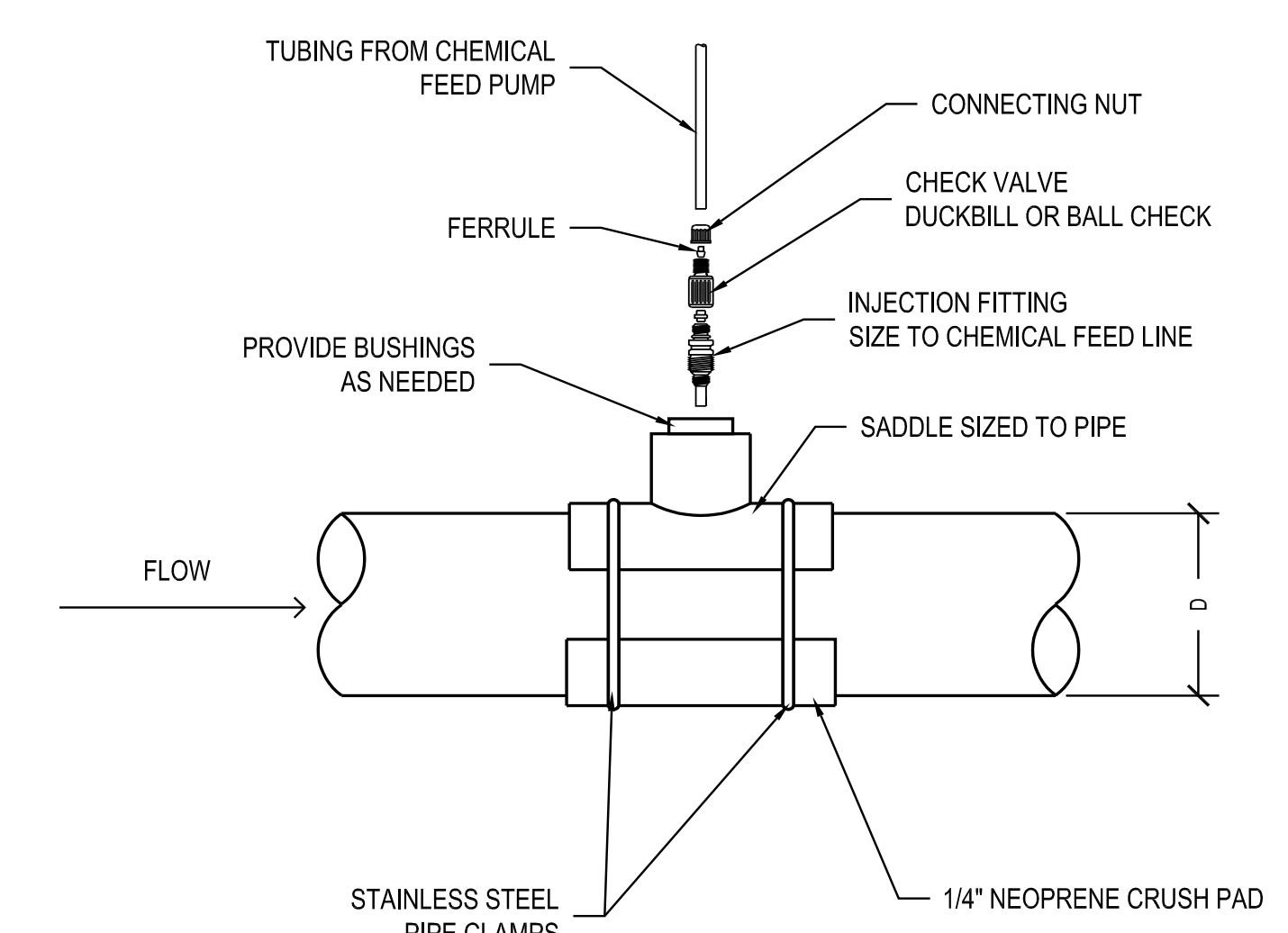
NOTES:
1. BREAK OFF FLOW SWITCH PADDLE EXTENSION AS REQUIRED FOR PIPE SIZE.

10) TYPICAL FLOW SWITCH INSTALLATION SCALE 3\"/>



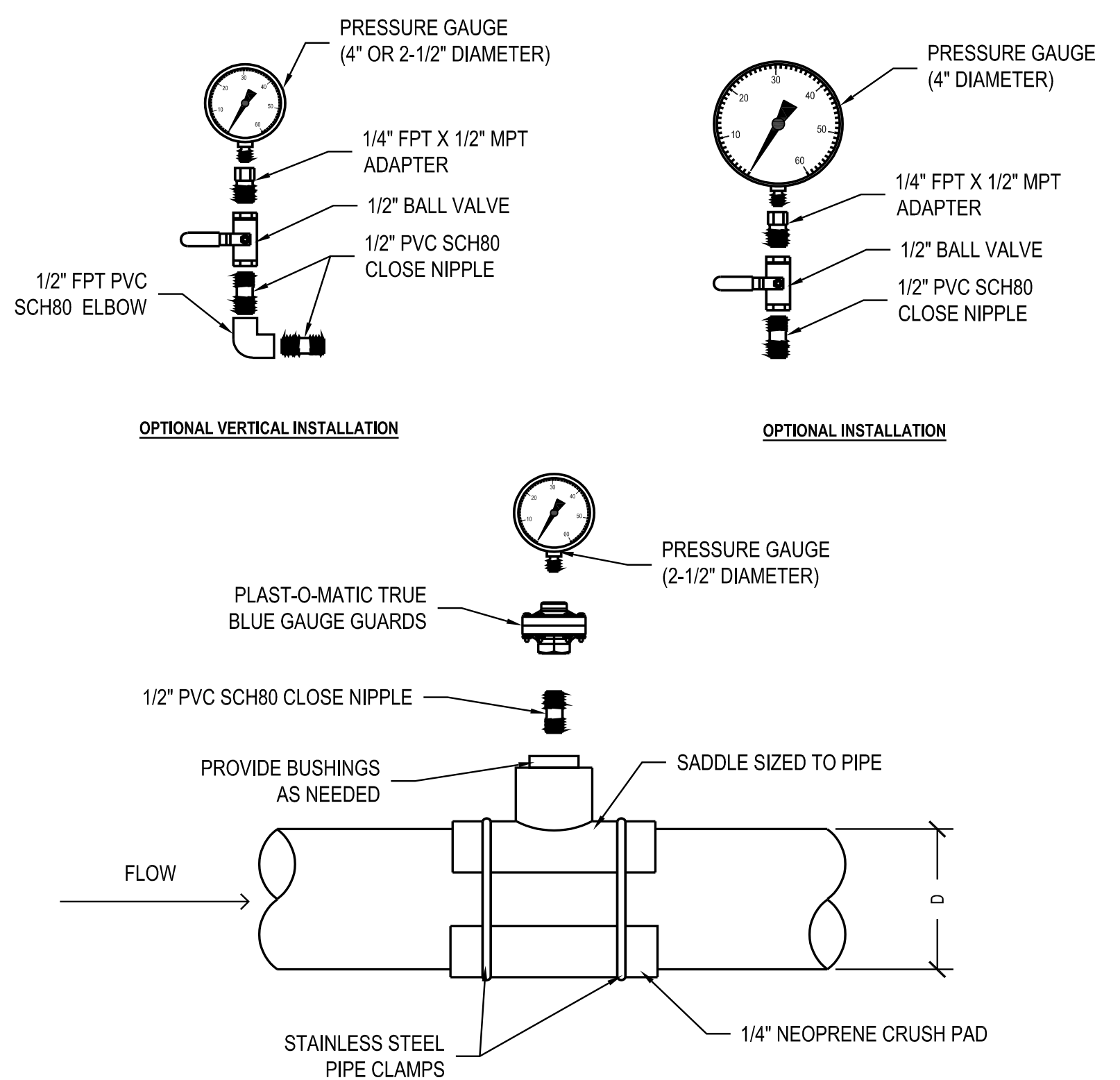
NOTES:
1. PROVIDE AIR RELEASE CHECK VALVE IN HIGH POINTS OF PIPE IN THE MECHANICAL ROOM.
2. PLUMB DISCHARGE TO NEARBY FLOOR DRAIN.

7) TYPICAL AIR RELEASE VALVE SCALE 3\"/>

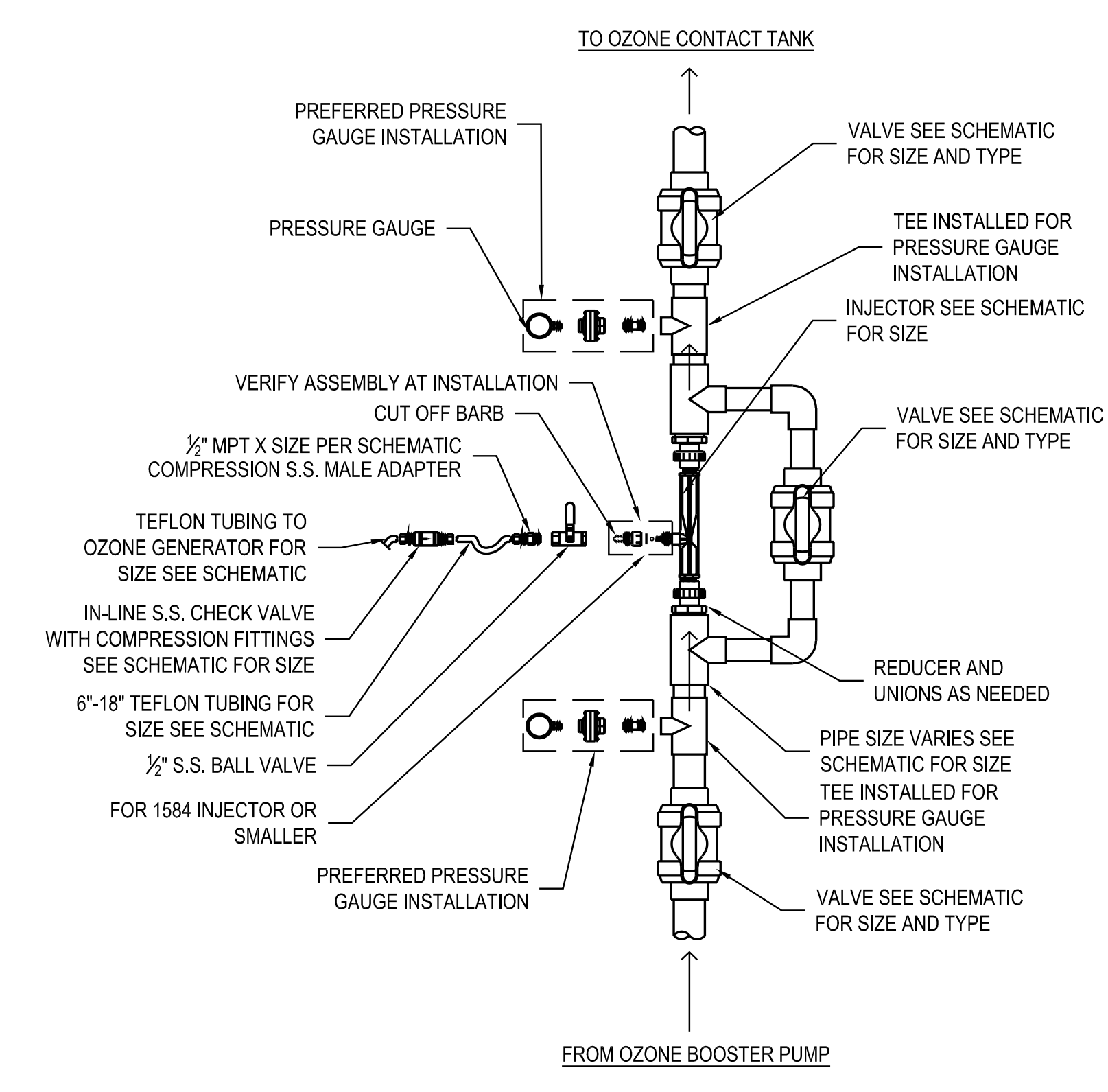


NOTES:
1. THE CHLORINE INJECTION POINT SHOULD BE UPSTREAM OF THE ACID INJECTION POINT.
2. PROVIDE A MINIMUM OF 5 PIPE DIAMETERS (D) BETWEEN OZONE ORP SAMPLE LINE AND CHLORINE INJECTION POINT AND ANOTHER 5 PIPE DIAMETERS BETWEEN CHLORINE AND ACID INJECTION POINTS.
3. PROVIDE INJECTION FITTINGS AND CHECK VALVES FROM THE SAME MANUFACTURER OF THE CHEMICAL FEED PUMP OR CONFIRM COMPATIBILITY BETWEEN DIFFERENT SUPPLIERS.
4. INSTALL INJECTION POINT IN THE TOP HALF OF THE PIPE.

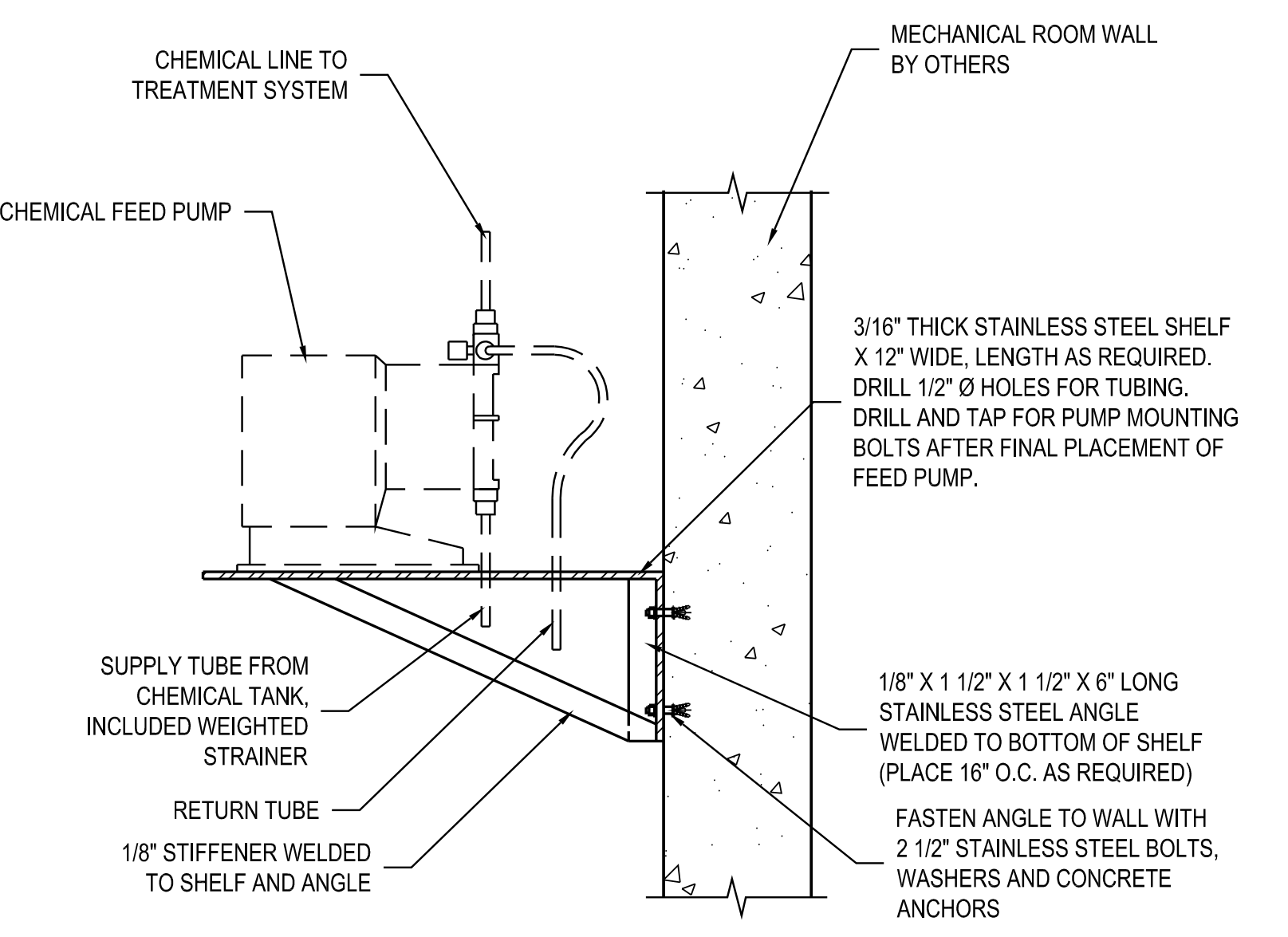
4) TYPICAL CHEMICAL INJECTION INSTALLATION SCALE 3\"/>



1) TYPICAL PRESSURE GAUGE INSTALLATION SCALE 3\"/>

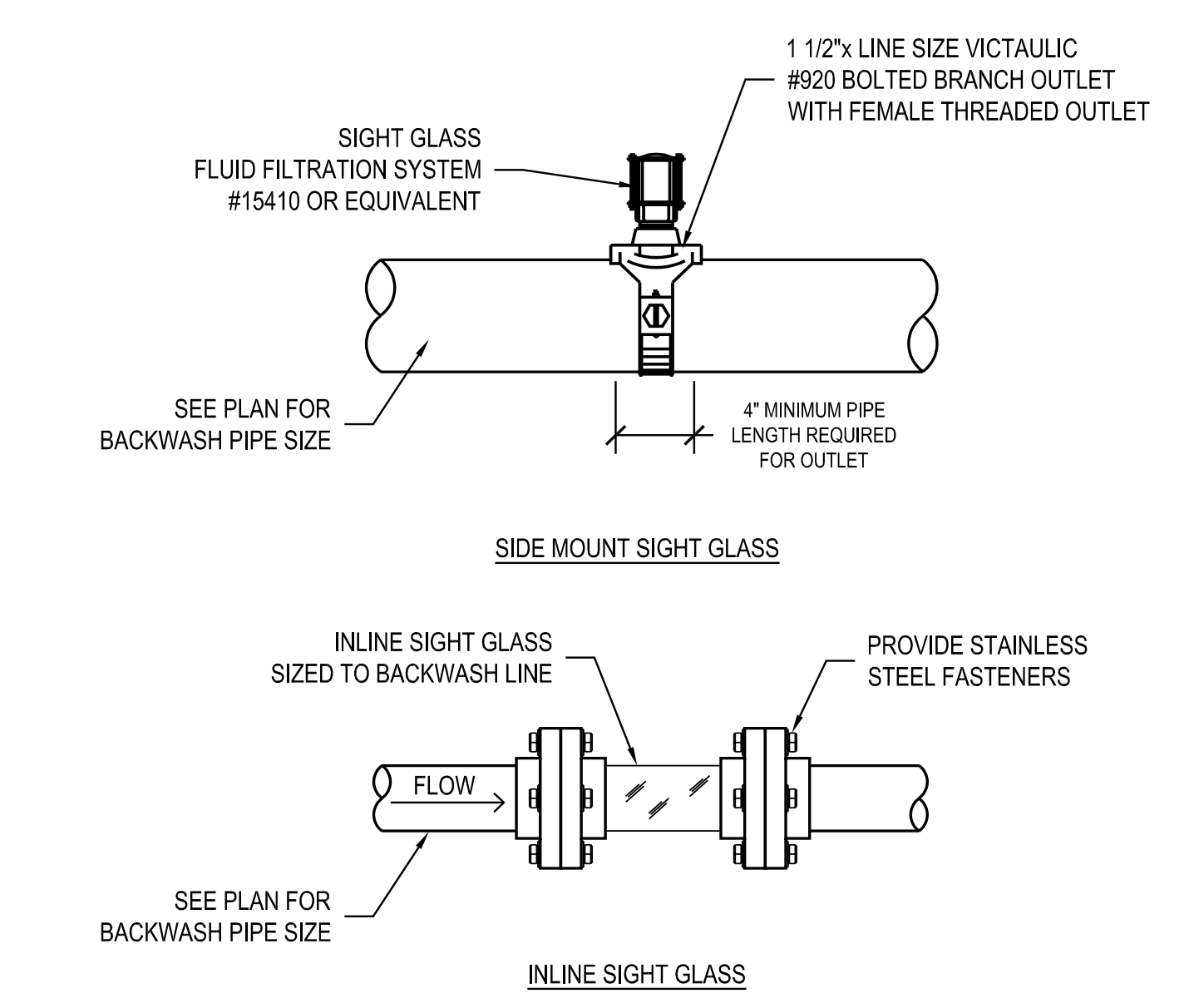


11) TYPICAL OZONE INJECTOR INSTALLATION SCALE 1-1/2\"/>

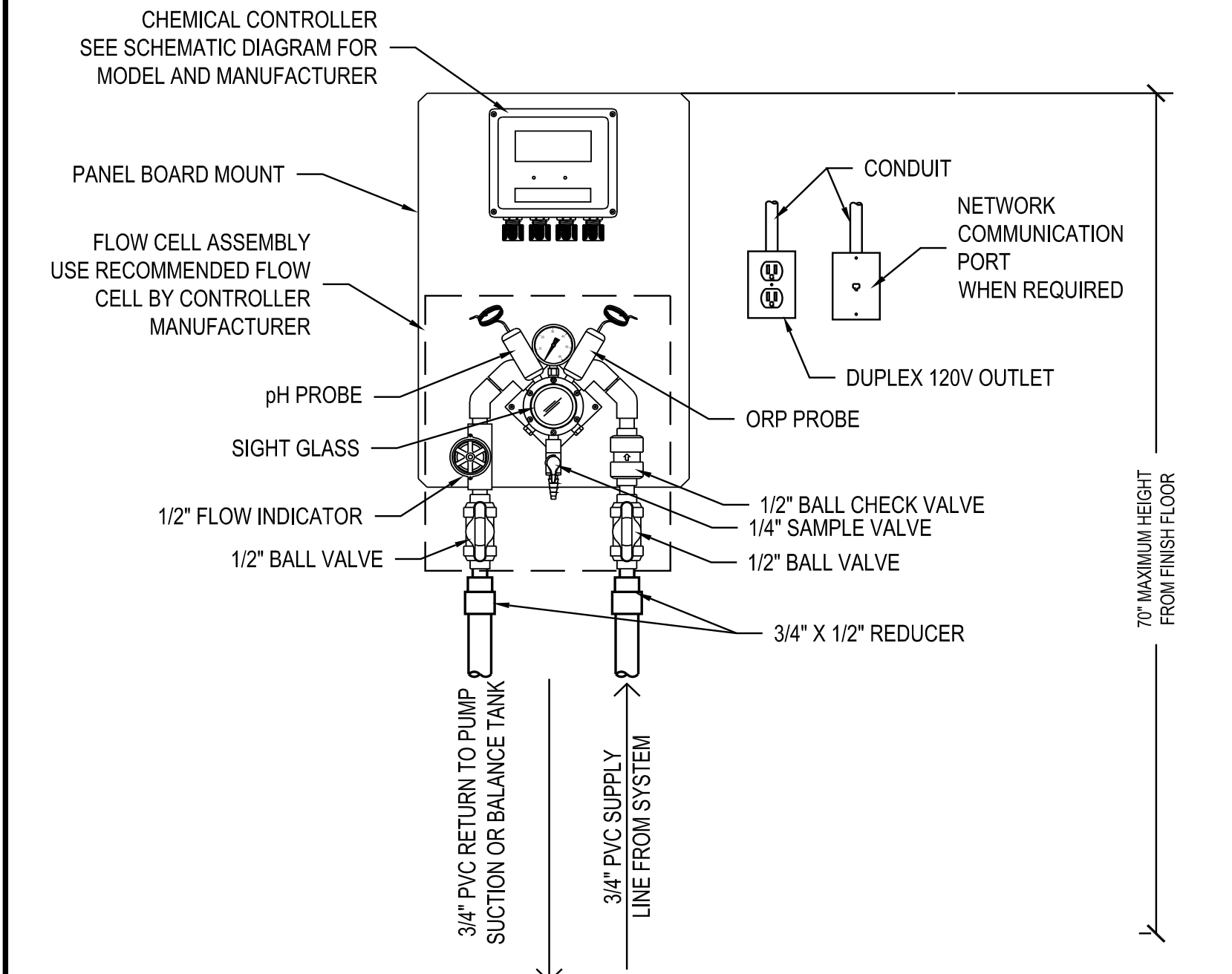


NOTES:
1. ACCEPTABLE OPTION: INSTALL PER MANUFACTURER'S RECOMMENDATIONS USING WALL MOUNTING INSTRUCTIONS.
2. ACCEPTABLE OPTION: PROVIDE A PRE-MANUFACTURED SHELF UNITS CAPABLE OF WITHSTANDING THE CHEMICAL STORAGE AREA ENVIRONMENT.
3. CHEMICAL FEED PUMPS SHOULD NOT BE INSTALLED DIRECTLY OVER CHEMICAL TANKS.

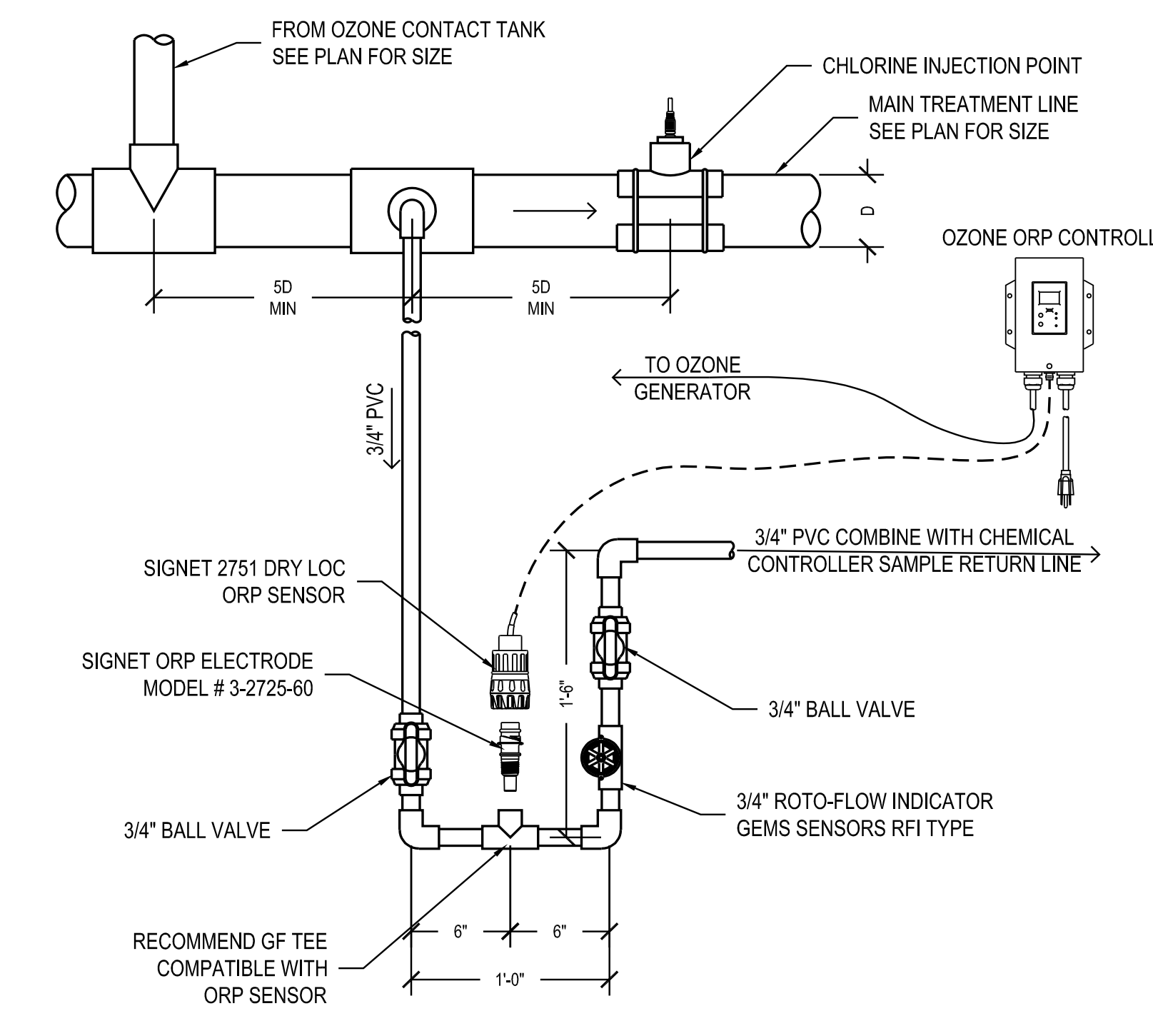
8) TYP. CHEMICAL FEED PUMP INSTALLATION SCALE 1-1/2\"/>



NOTES:
1. PROVIDE SIGHT GLASS FOR ALL FILTERS. IF BACKWASH LINE IS COMBINED ONE SIGHT GLASS MAY BE SUFFICIENT.
2. FOR 1-1/2\"/>

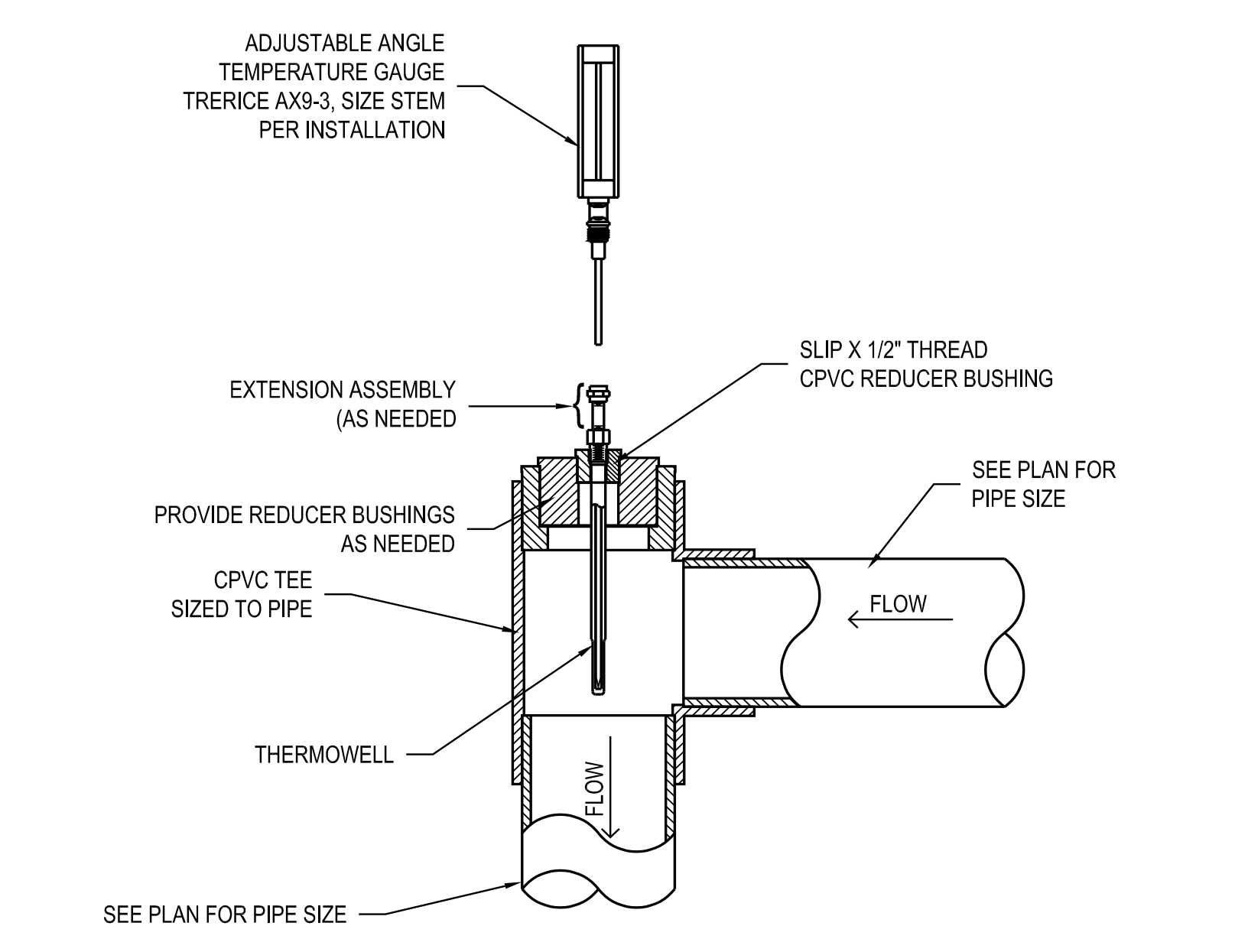


NOTES:
1. CONTROL WIRING TO CHEMICAL FEED PUMPS SHOULD BE ROUTED IN CONDUIT.
2. FOR FLOW CELL ASSEMBLIES WITH 3/8\"/>



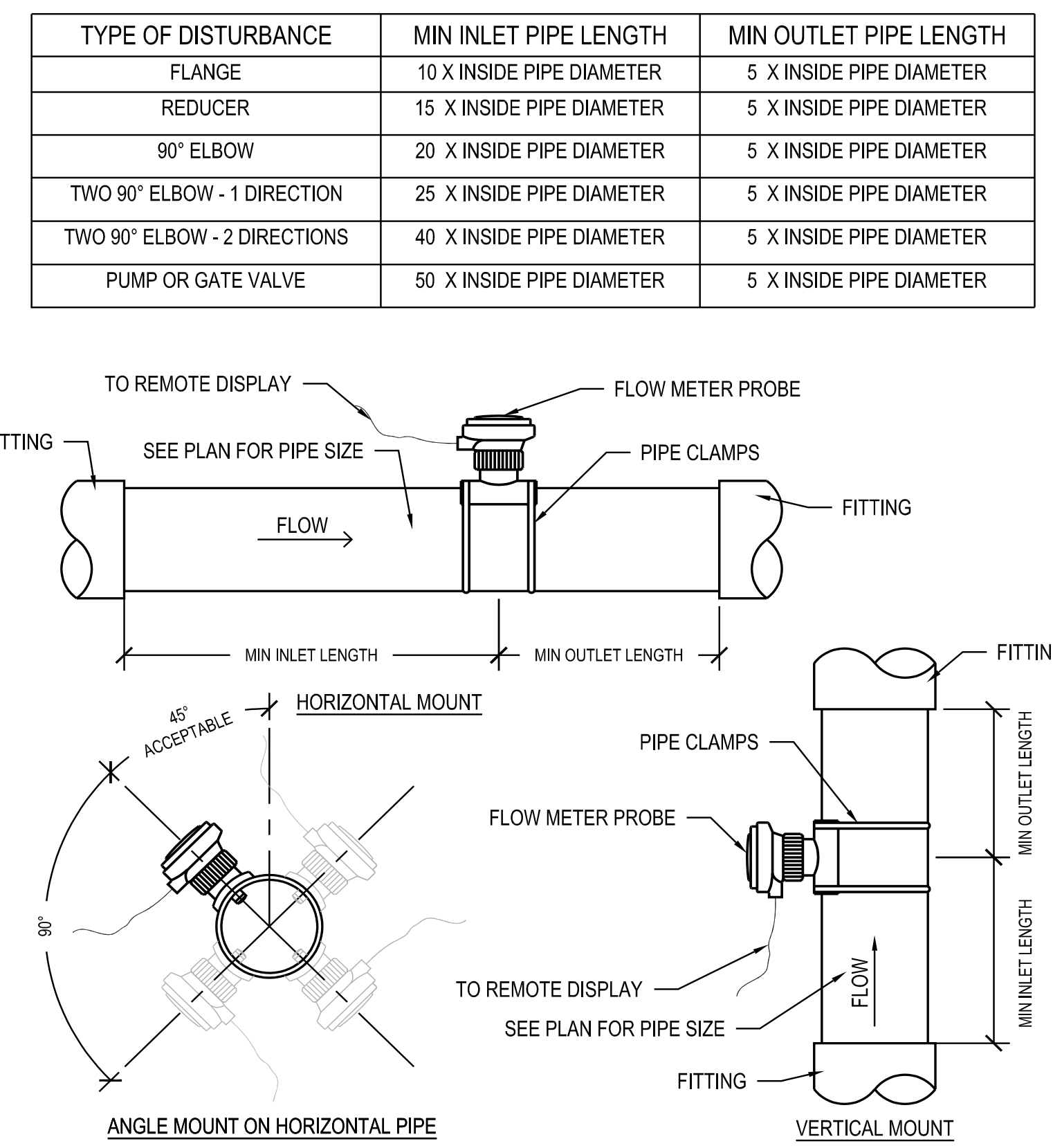
NOTES:
1. OZONE ORP SENSOR SHALL BE INSTALLED IN A SIDE STREAM LOOP AS SHOWN IN THIS DETAIL.
2. ASSEMBLY SHALL BE ANCHORS TO A WALL OR UNISTRUT SUPPORT STRUCTURE.
3. THE SAMPLE LINE SHALL BE LOCATED A MINIMUM OF 5 PIPE DIAMETERS DOWNSTREAM OF THE OZONE LOOP RETURN AND A MINIMUM OF 5 PIPE DIAMETERS UPSTREAM OF THE CHLORINE INJECTION POINT.
4. ORP SENSOR SHALL BE PLACED IN AN OPERATOR ACCESSIBLE LOCATION & REGULARLY CLEANED.

12) TYPICAL OZONE ORP SENSOR INSTALLATION SCALE 1-1/2\"/>

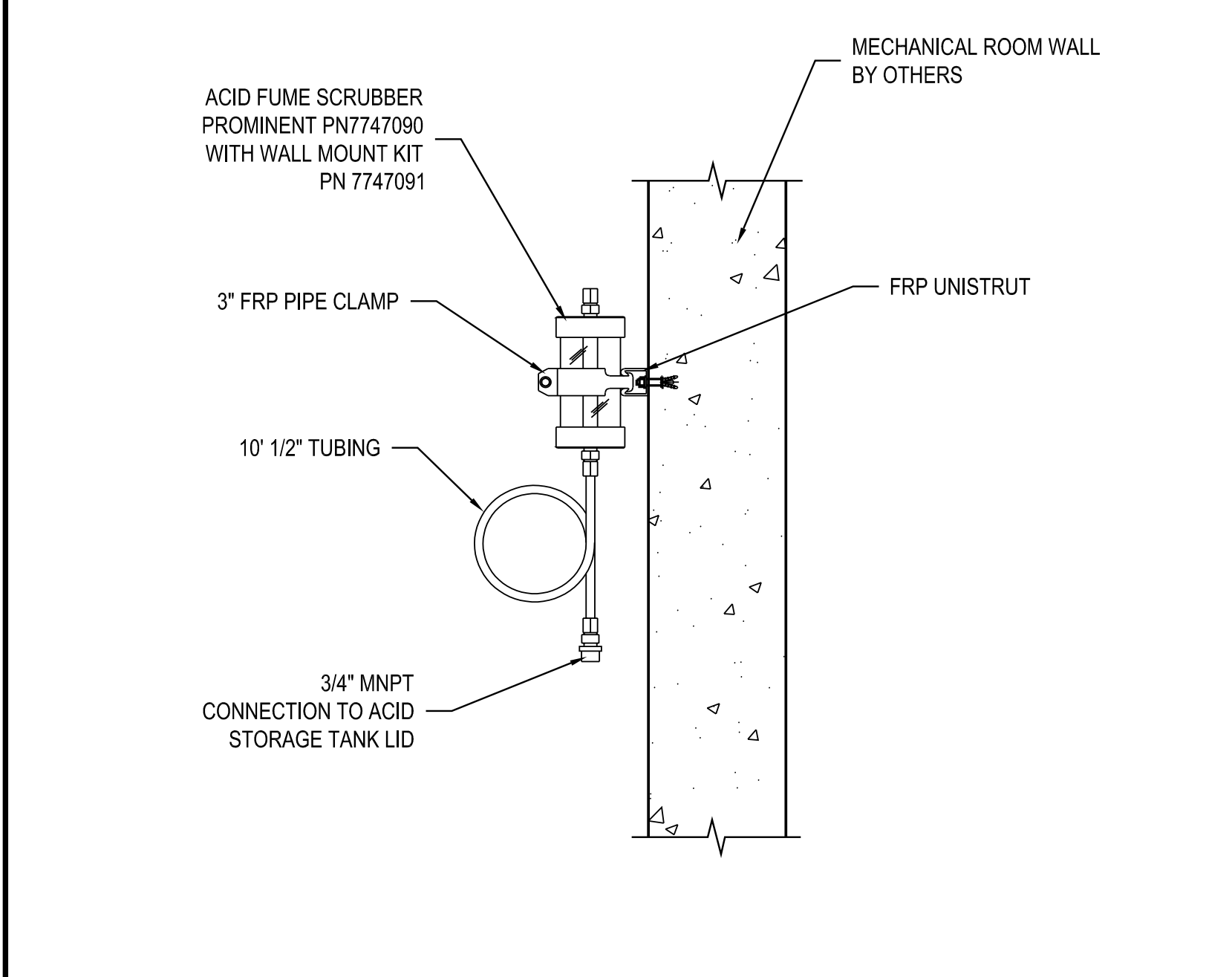


NOTES:
1. GAUGE MAY BE INSTALLED IN A STRAIGHT TEE WITH THE GAUGE IN THE BRANCH LEG.
2. PROVIDE A TRENDE BXS-3 GAUGE WITH INTEGRATE RTD WHEN NEEDED.
3. USE CPVC OR COPPER PIPE FOR HIGH WATER TEMPERATURE APPLICATIONS. SEE PLANS

9) TYP. TEMPERATURE GAUGE INSTALLATION SCALE 1-1/2\"/>



6) TYPICAL FLOW METER INSTALLATION SCALE 1-1/2\"/>



NOTES:
1. ACID FUME SCRUBBER MAY BE MOUNTED DIRECTLY TO THE TANK LID. FOLLOW MANUFACTURER'S INSTRUCTIONS FOR INSTALLATION.
2. PROVIDE ONE SCRUBBER UNIT FOR EVERY 60 GALLONS OF ACID STORAGE.
3. WHEN MULTIPLE UNITS ARE REQUIRED PROVIDE SUFFICIENT LENGTH OF FRP UNISTRUT TO SUPPORT MULTIPLE UNITS.

3) TYP. ACID FUME SCRUBBER INSTALLATION SCALE 1-1/2\"/>