

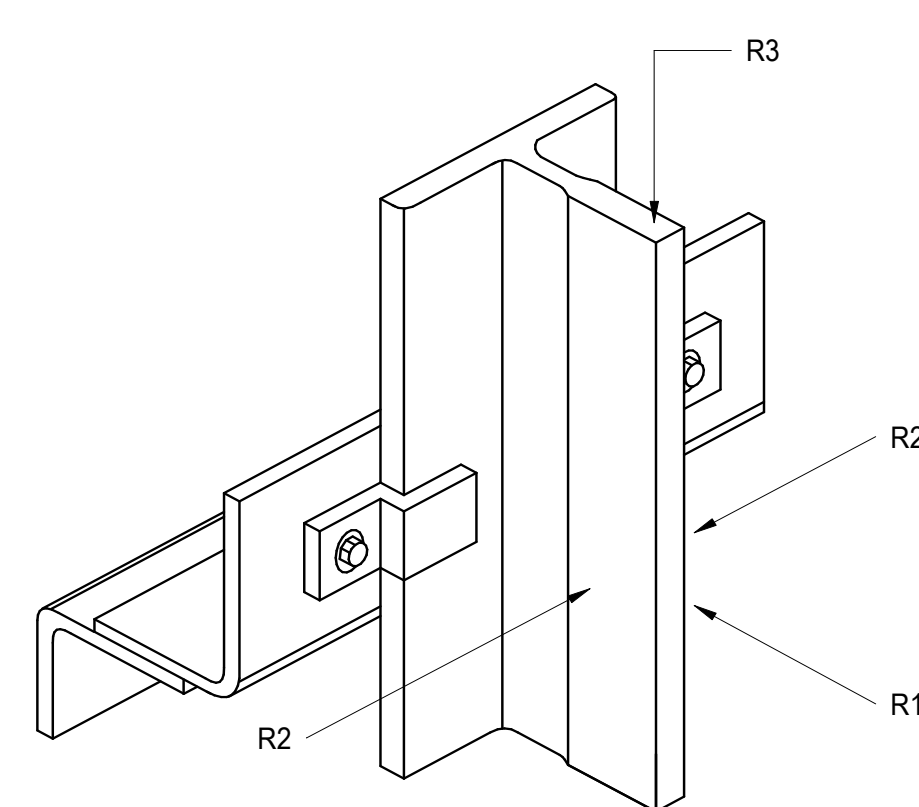
04/06/24

159 South Jackson St, Suite 600  
Seattle, Washington 98104 USA  
+1 206 624 5670 [olsonkundig.com](mailto:olsonkundig.com)

Olson Kundig

project: **SOMMET BLANC - ABC**  
**DEER VALLEY, UTAH**

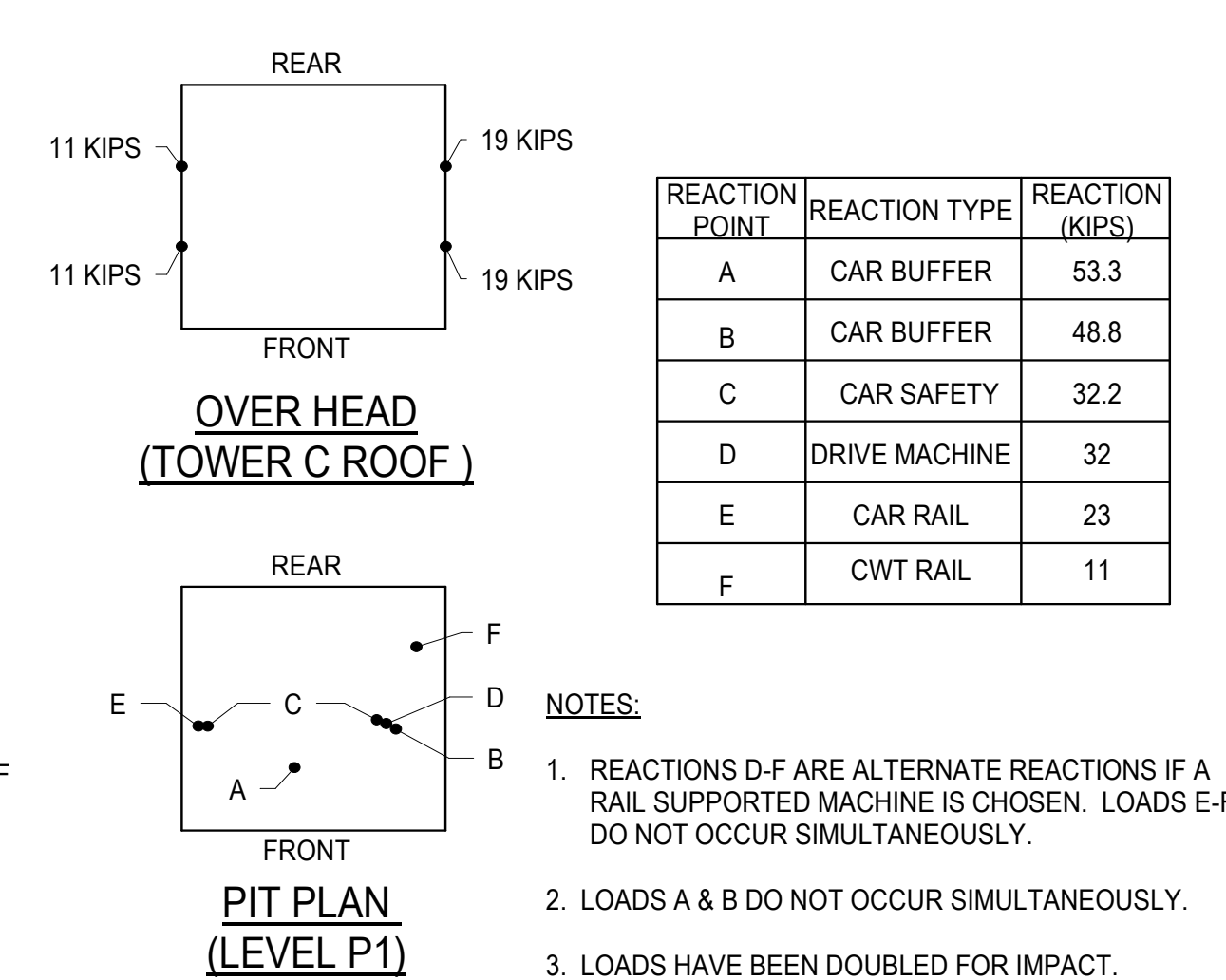
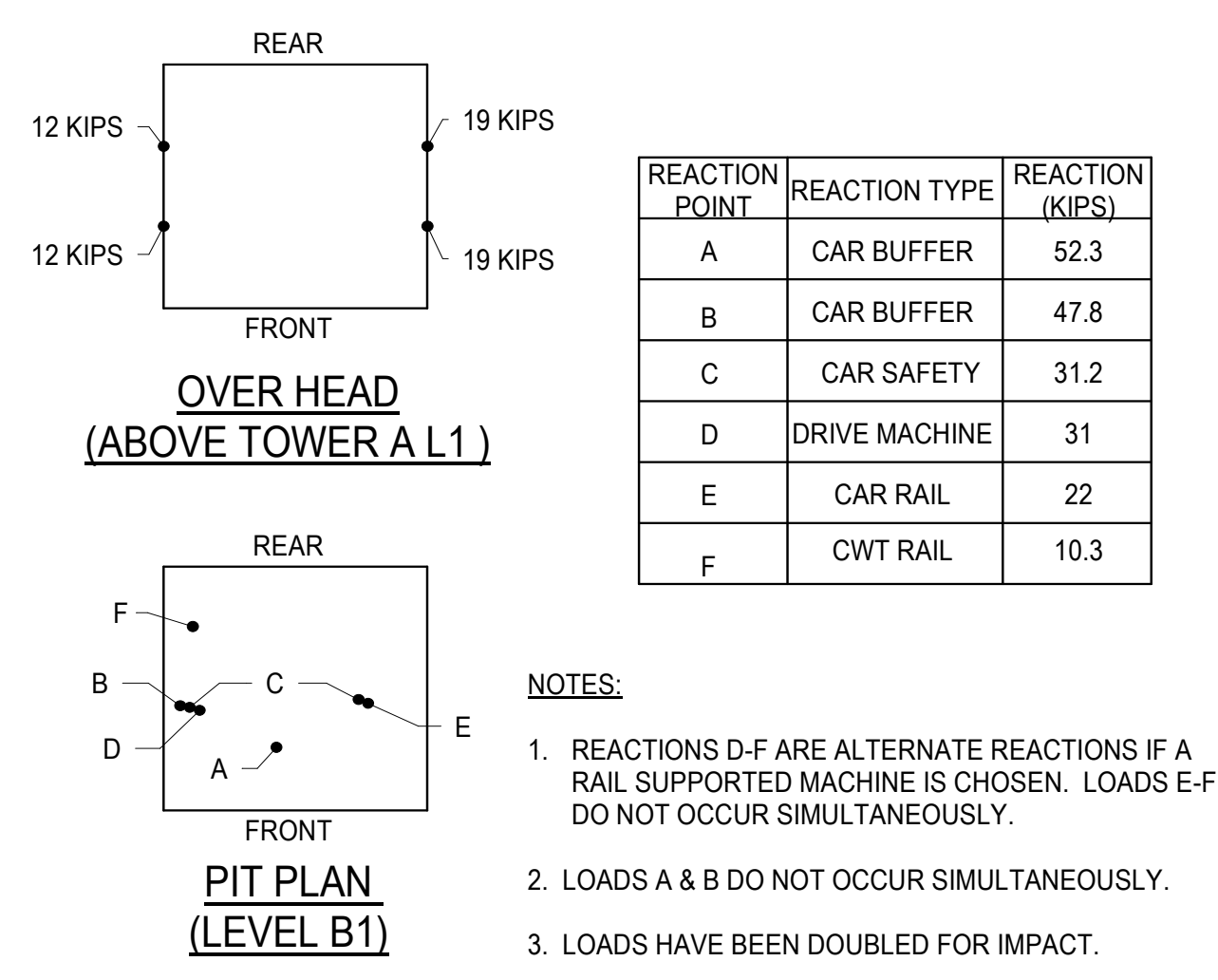
**MAGNUSSON  
KLEMENCIC  
ASSOCIATES**  
Structural + Civil Engineers  
Seattle Chicago  
www.mka.com  
206 292 1200



ELEVATOR RAIL NORMAL REACTIONS		LS	KS	T1-4	T5
CAR	R1 (KIPS)	0.7	1.1	1.1	1.1
	R2 (KIPS)	0.4	0.5	0.5	0.5
	R3 (KIPS)	SEE ELEVATOR PIT PLAN			
CAR	R1 (KIPS)	0.8	1.1	1.1	1.1
	R2 (KIPS)	0.4	0.6	0.6	0.6
	R3 (KIPS)	SEE ELEVATOR PIT PLAN			

16 LATERAL PRESSURE ON SUBGRADE WALLS

## 14 ELEVATOR RAIL REACTIONS



17 LOBBY SHUTTLE (LS) ELEVATOR REACTIONS

## 18 KITCHEN SERVICE (KS) ELEVATOR REACTIONS

## 10 ELEVATOR T1-T4 REACTIONS

## 20 ELEVATOR T5 REACTIONS

revisions:

[illegible]

2	04/08/2024	IFC SET 1 OF 3
1	11/18/2022	95% CD

no. date

ISSUED FOR CONSTRUCTION  
SET 1 OF 3

04/08/2024

## LOAD MAPS

S1.09