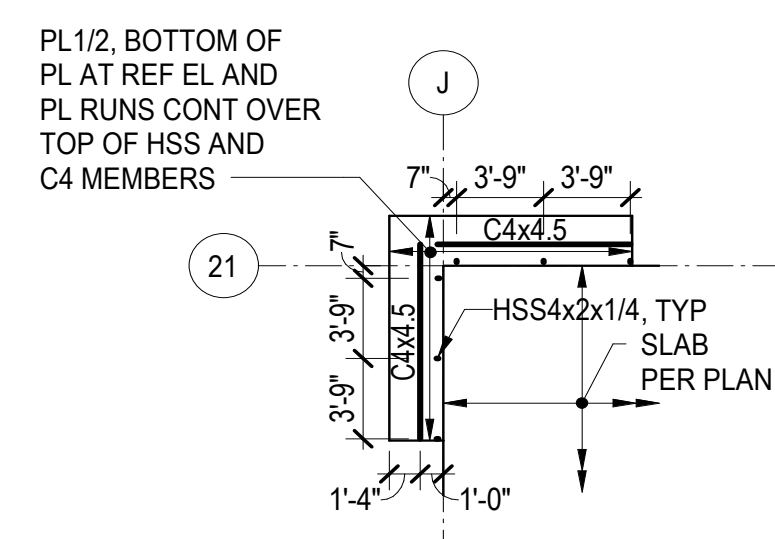
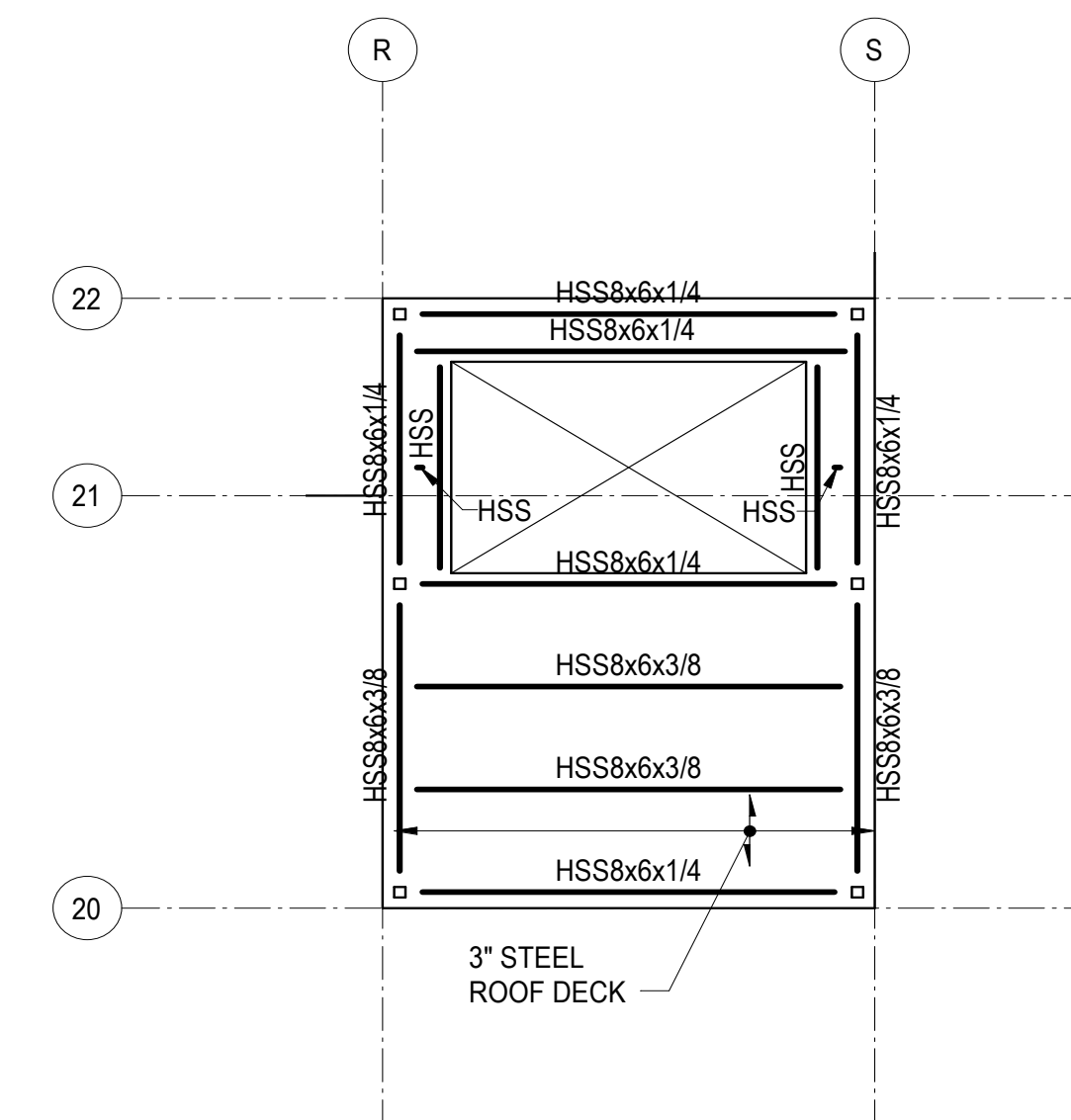
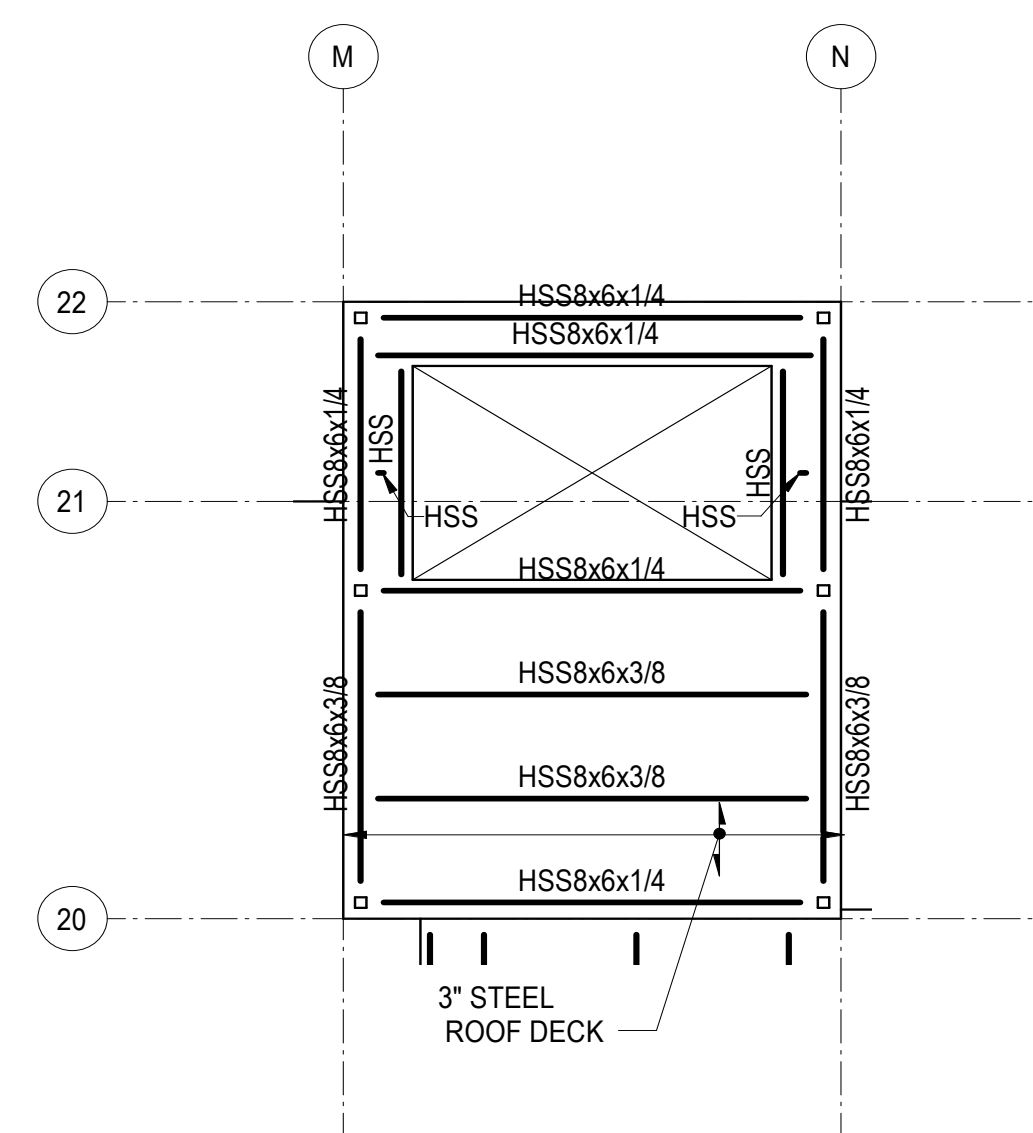


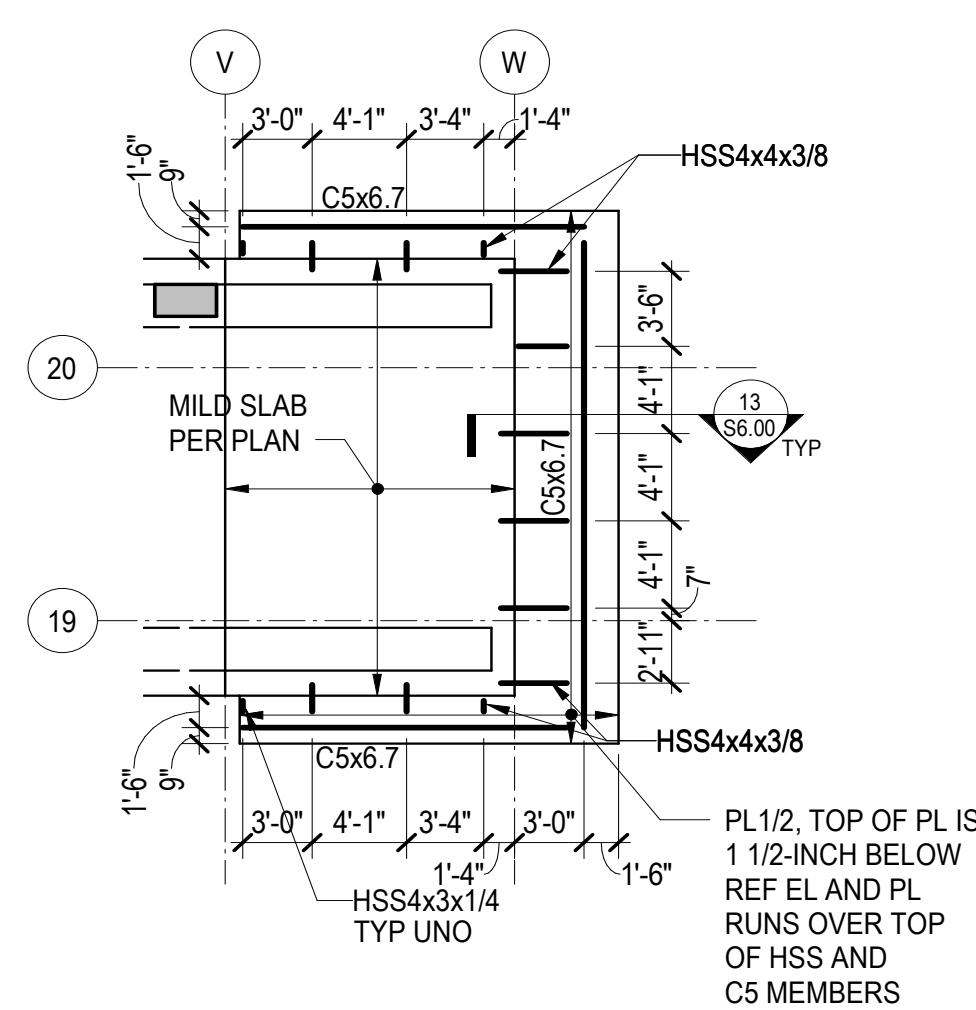
- NOTES:**
1. REFERENCE FLOOR ELEVATION IS 8340'-0". TOP OF SLAB ON STEEL DECK IS AT THE REFERENCE ELEVATION UNLESS NOTED OTHERWISE. SEE ARCHITECTURAL DRAWINGS FOR DRAINAGE SLOPES NOT SHOWN.
 2. STRUCTURAL SLAB IS 4 INCHES OF NORMALWEIGHT CONCRETE ON 3-INCH COMPOSITE STEEL DECK UNLESS NOTED OTHERWISE. REINFORCE PER SECTION ON PLAN. SEE REINFORCING SHOWN ON THE PLAN AND IN THE TYPICAL DETAILS IS IN ADDITION TO THIS REINFORCING.
 3. REFERENCE TOP OF STEEL IS AT THE BOTTOM OF SLAB ON STEEL DECK UNLESS NOTED OTHERWISE.
 4. COORDINATE LOCATION OF ALL EMBEDS WITH MECHANICAL, ELECTRICAL, PLUMBING, AND EXTERIOR WALL SYSTEMS PRIOR TO CASTING SLABS AND WALLS.
 5. SEE ARCHITECTURAL, MECHANICAL, PLUMBING, ELECTRICAL, AND OTHER DISCIPLINES DRAWINGS FOR OPENING SIZES AND LOCATIONS NOT SHOWN ON PLAN. SEE "TYPICAL OPENINGS AND EMBEDMENTS IN CONCRETE," "TYPICAL ROOF DECK OPENINGS," AND "TYPICAL COMPOSITE DECK OPENINGS" DETAILS FOR OPENING PLACEMENT CRITERIA AND REINFORCING OR FRAMING REQUIREMENTS. NOTIFY STRUCTURAL ENGINEER OF ANY OPENINGS NOT SHOWN ON THE STRUCTURAL DRAWINGS FOR WHICH THE TYPICAL DETAILS DO NOT APPLY.
 6. REFERENCE ALL CONSTRUCTION DOCUMENTS FOR SIZE, EXTENT, AND LOCATION OF CONCRETE CURBS, HOUSEKEEPING PADS, CMU WALLS, PLANTER WALLS, BOLLARDS, EDGE ANGLES, AND SLAB PENETRATIONS. REINFORCE PER TYPICAL DETAILS.
 7. WHERE NOTE APPLIES, HSS TOP CONTINUES TO UNDERSIDE OF LEVEL P1 SLAB. PROVIDE "TYPICAL HSS TOP POST SLIP CONNECTION" AT UNDERSIDE OF SLAB ABOVE.



- NOTES:
1. REFERENCE FLOOR ELEVATIONS ARE:

TOWER B LEVEL 5: 8412'-0"
TOWER B LEVEL 7: 8436'-6"

TOP OF STEEL IS AT THE REFERENCE FLOOR ELEVATION UNLESS NOTED OTHERWISE
 2. SEE ARCHITECTURAL DETAILS FOR ADDITIONAL INFORMATION.

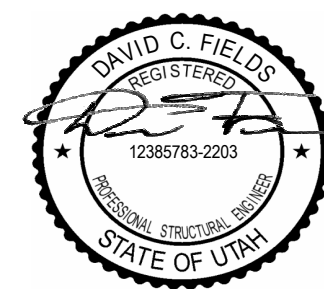


- NOTES:
1. REFERENCE FLOOR ELEVATIONS ARE:

TOWER B LEVEL 5: 8412'-0"
TOWER B LEVEL 7: 8436'-6"
 2. SEE ARCHITECTURAL DETAILS FOR ADDITIONAL INFORMATION.

- NOTES:**
1. REFERENCE FLOOR ELEVATION IS 8458'-11". REFERENCE TOP OF STRUCTURAL STEEL IS 3-INCHES BELOW THE REFERENCE FLOOR ELEVATION, TYPICAL UNLESS NOTED OTHERWISE.
 2. ROOF DECK IS MINIMUM 3-INCH x 20 GAUGE STEEL DECKING. DECKING IS TO BE INSTALLED IN MINIMUM THREE SPAN CONDITIONS WHERE POSSIBLE.

- NOTES:**
1. REFERENCE FLOOR ELEVATION IS 8458'-11". REFERENCE TOP OF STRUCTURAL STEEL IS 3-INCHES BELOW THE REFERENCE FLOOR ELEVATION, TYPICAL UNLESS NOTED OTHERWISE.
 2. ROOF DECK IS MINIMUM 3-INCH x 20 GAUGE STEEL DECKING. DECKING IS TO BE INSTALLED IN MINIMUM THREE SPAN CONDITIONS WHERE POSSIBLE.



Reserved for permit stamp

159 South Jackson St, Suite 600
Seattle, Washington 98104 USA
+1 206 824 5870 olson@olsonkundig.com

Olson Kundig

project: **SOMMET BLANC - ABC**
DEER VALLEY, UTAH

MAGNUSSON
KLEMENCIC
ASSOCIATES

Structural + Civil Engineers
Seattle Chicago
www.mka.com
206.292.1200

principal architect _____
project manager _____
drawn by _____
checked by _____
job no. 20052
date 05/17/2024

revisions:

04/08/2024 IFC SET 1 OF 3
11/18/2022 95% CD

IFC SET 2 OF 3

05/17/2024

TOWER B PARTIAL
PLANS

S2.B.50