



Reserved for permit stamp

100 South Jackson St., Suite 200  
Salt Lake City, Utah 84111 USA  
+1 208 244 8470 olsonkunding.com

Olson Kunding

PROJECT:  
SOMMET BLANC - ABC  
DEER VALLEY, UTAH

MAGNUSSON  
KLEMENCIC  
ASSOCIATES

Structural & Civil Engineers  
Seattle Chicago  
www.mka.com  
206.292.1000

SHEAR WALL VERTICAL REINFORCING SCHEDULE		
MARK	REINFORCING	REMARKS
V1	#6 @ 12"	EF
V2	#7 @ 12"	EF
V3	#8 @ 12"	EF
V4	#7 @ 6"	EF
V5	#9 @ 12"	EF

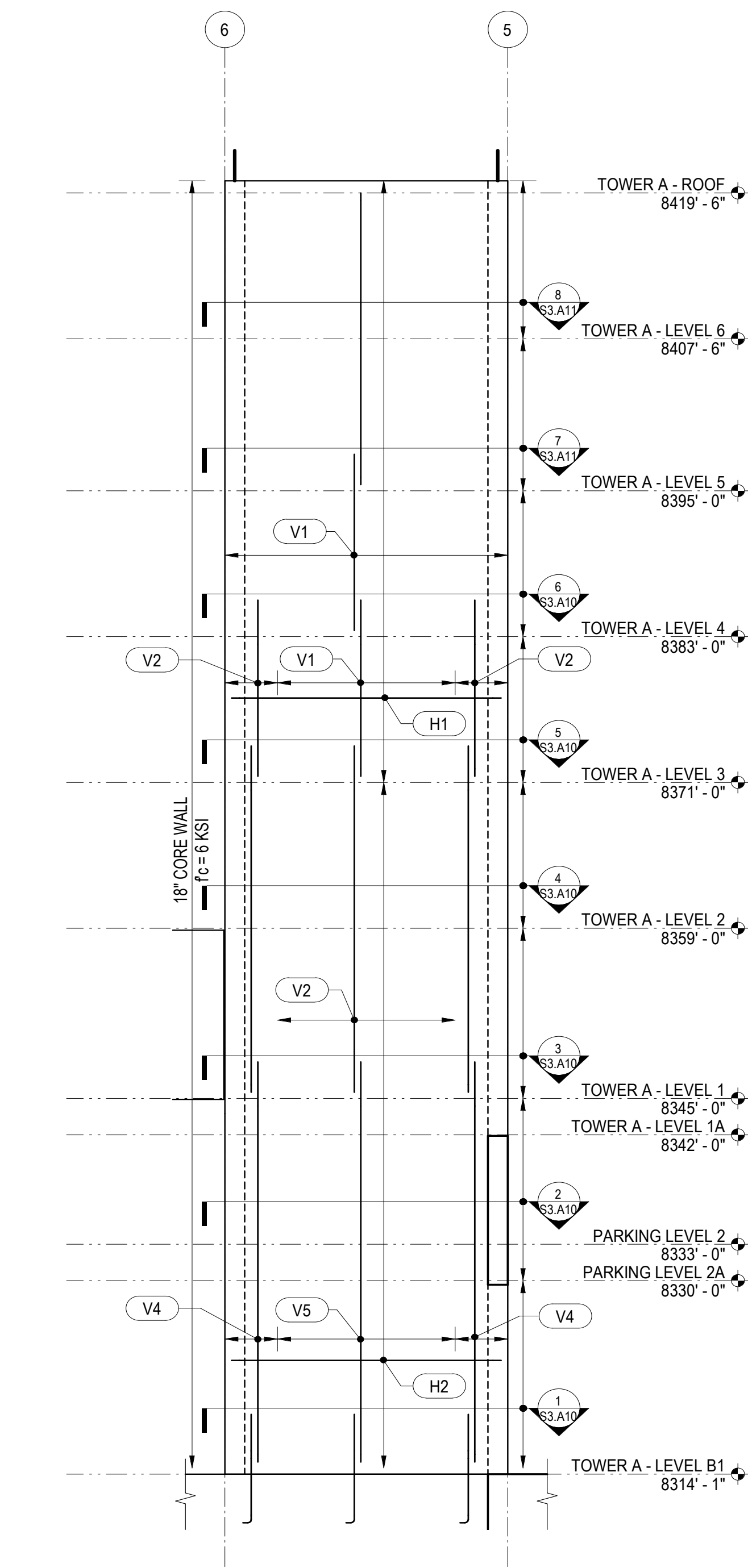
SHEAR WALL HORIZONTAL REINFORCING SCHEDULE		
MARK	REINFORCING	REMARKS
H1	#5 @ 12"	EF
H2	#6 @ 12"	EF
H3	#7 @ 12"	EF
H6	#5 @ 6"	(3) LAYERS
H7	#5 @ 6"	(4) LAYERS

#### REFERENCE DRAWINGS

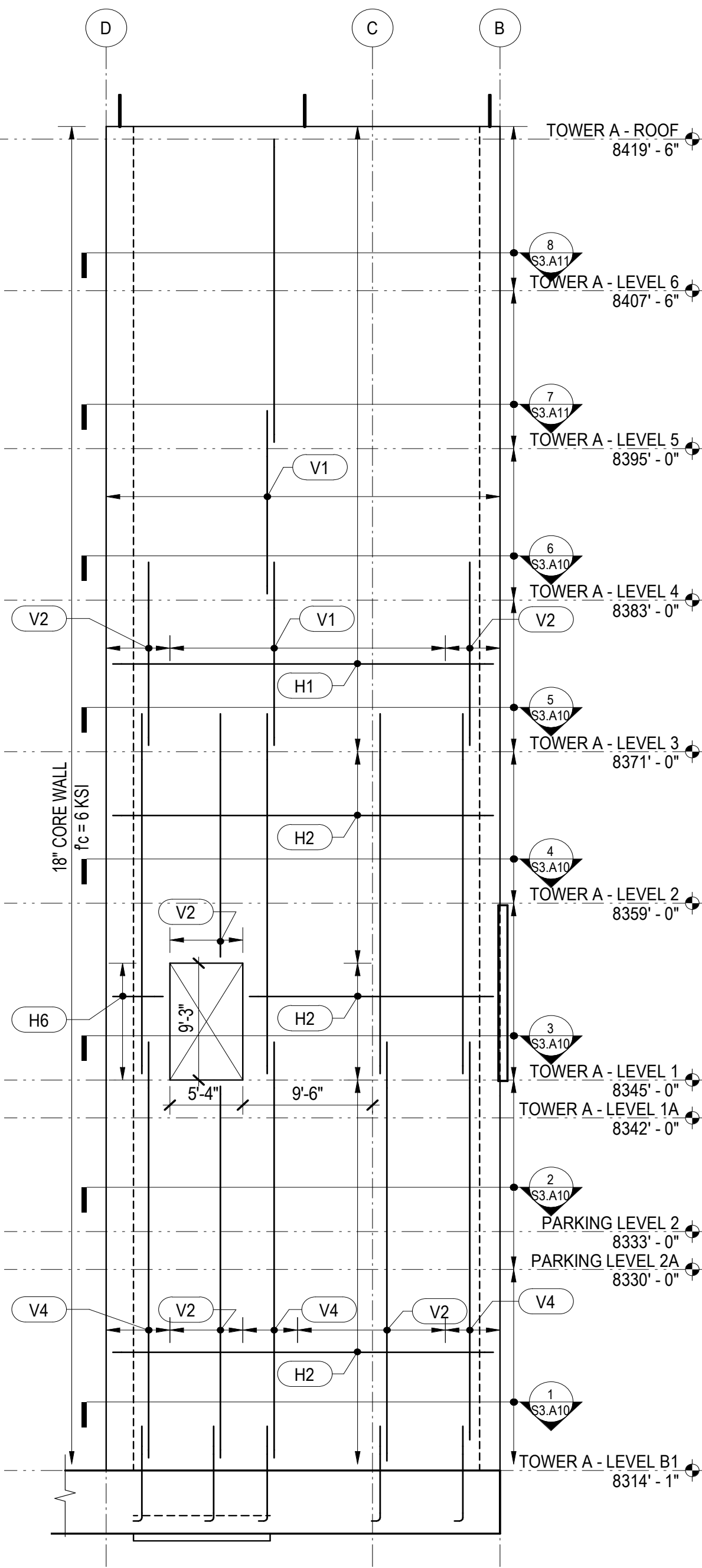
S0.XX DRAWING INDEX, ABBREVIATIONS, LEGENDS, GENERAL NOTES  
S1.XX LOAD DIAGRAMS  
S2.XX PLANS  
S3.XX ELEVATIONS  
S4.XX TYPICAL DETAILS AND SCHEDULES  
S5.XX CONCRETE SECTIONS AND DETAILS  
S6.XX STEEL SECTIONS AND DETAILS

#### NOTES

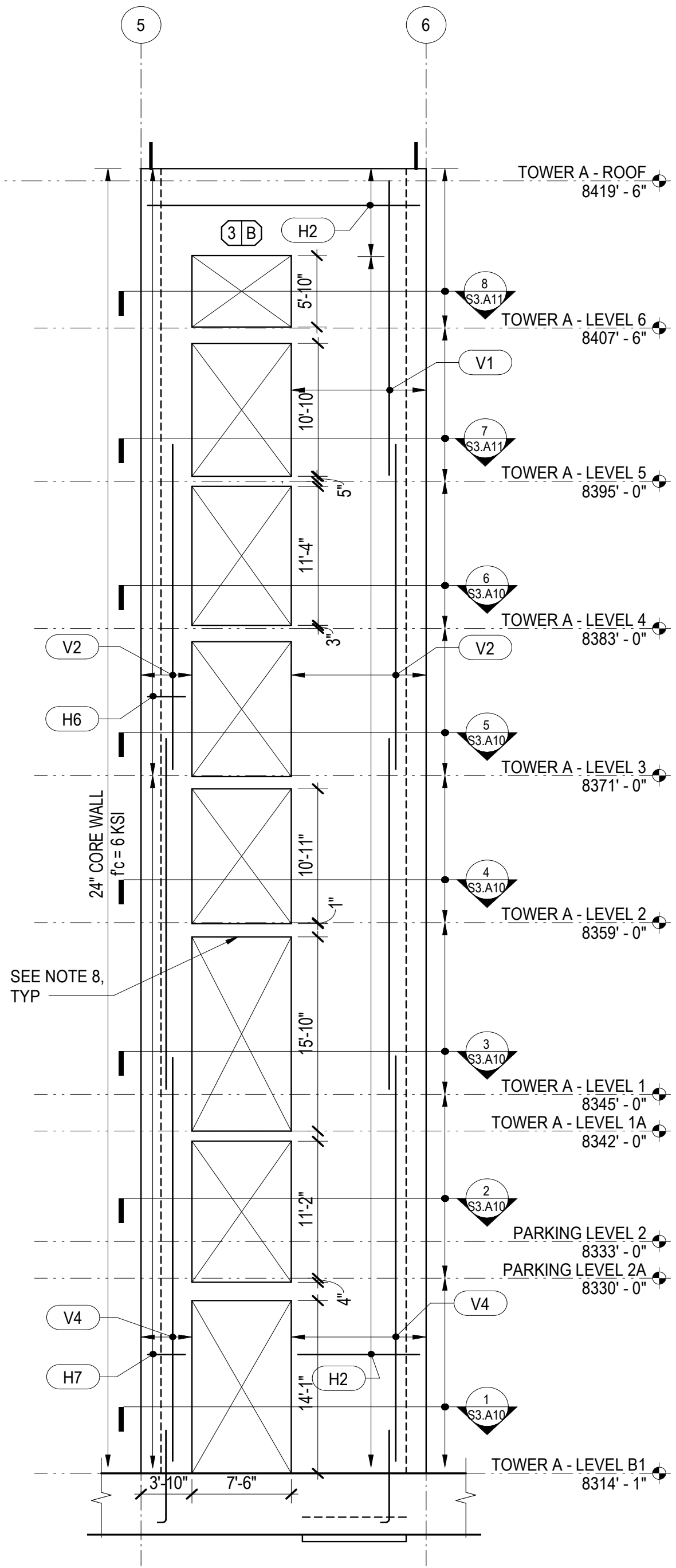
- CORE WALL OPENINGS REMAIN THE SAME SIZE AS THE DIMENSIONED OPENING BELOW, UNLESS NOTED OTHERWISE.
- WALL OPENINGS AND SLEEVE PENETRATIONS NOT SPECIFICALLY INDICATED ON THE STRUCTURAL DRAWINGS SHALL BE APPROVED BY THE STRUCTURAL ENGINEER PRIOR TO CONSTRUCTION.
- FOUNDATION DOWELS SHALL MATCH SIZE AND SPACING OF SHEAR WALL VERTICAL BARS ABOVE. EXTEND DOWELS TO BOTTOM OF FOUNDATION WITH 90 DEGREE HOOK.
- VERTICAL REINFORCEMENT RETAINS THE SAME MARK AS FOR THE STORY BELOW, UNLESS NOTED OTHERWISE.
- LAP VERTICAL REINFORCEMENT L<sub>vb</sub>, UNLESS NOTED OTHERWISE. AT THE CONTRACTOR'S OPTION VERTICAL REINFORCEMENT MAY BE SPLICED AT INTERMEDIATE LEVELS, UNLESS NOTED OTHERWISE.
- LAP HORIZONTAL REINFORCEMENT L<sub>sh</sub>, UNLESS NOTED OTHERWISE. WHERE LAPS NOT EXPLICITLY SHOWN IN SHEAR WALL SECTIONS, CONTRACTOR SHALL SUBMIT ANY ADDITIONAL LAP LOCATIONS FOR REVIEW BY THE ENGINEER.
- SEE SHEAR WALL SECTIONS FOR ADDITIONAL REINFORCEMENT NOT SHOWN ON SHEAR WALL ELEVATIONS.
- (1)A INDICATES A CONCRETE COUPLING BEAM. SEE 'TYPICAL CONCRETE COUPLING BEAM DETAILS AND SCHEDULES' FOR REINFORCEMENT. WHERE NO COUPLING BEAM IS CALLED OUT BETWEEN STACKED OPENINGS, SEE 'TYP SLAB WITHOUT COUPLING BEAM AT STACKED WALL OPENINGS' DETAIL.
- CONCRETE PLACED IN THE COUPLING BEAMS, INCLUDING THROUGHOUT THE SLAB DEPTH, SHALL MEET THE SAME SPECIFICATIONS AS FOR THE SHEAR WALLS. SEE GENERAL NOTES FOR CRITERIA.
- SEE GENERAL NOTES FOR REINFORCEMENT THAT SHALL MEET SPECIAL DUCTILE QUALITY CRITERIA.



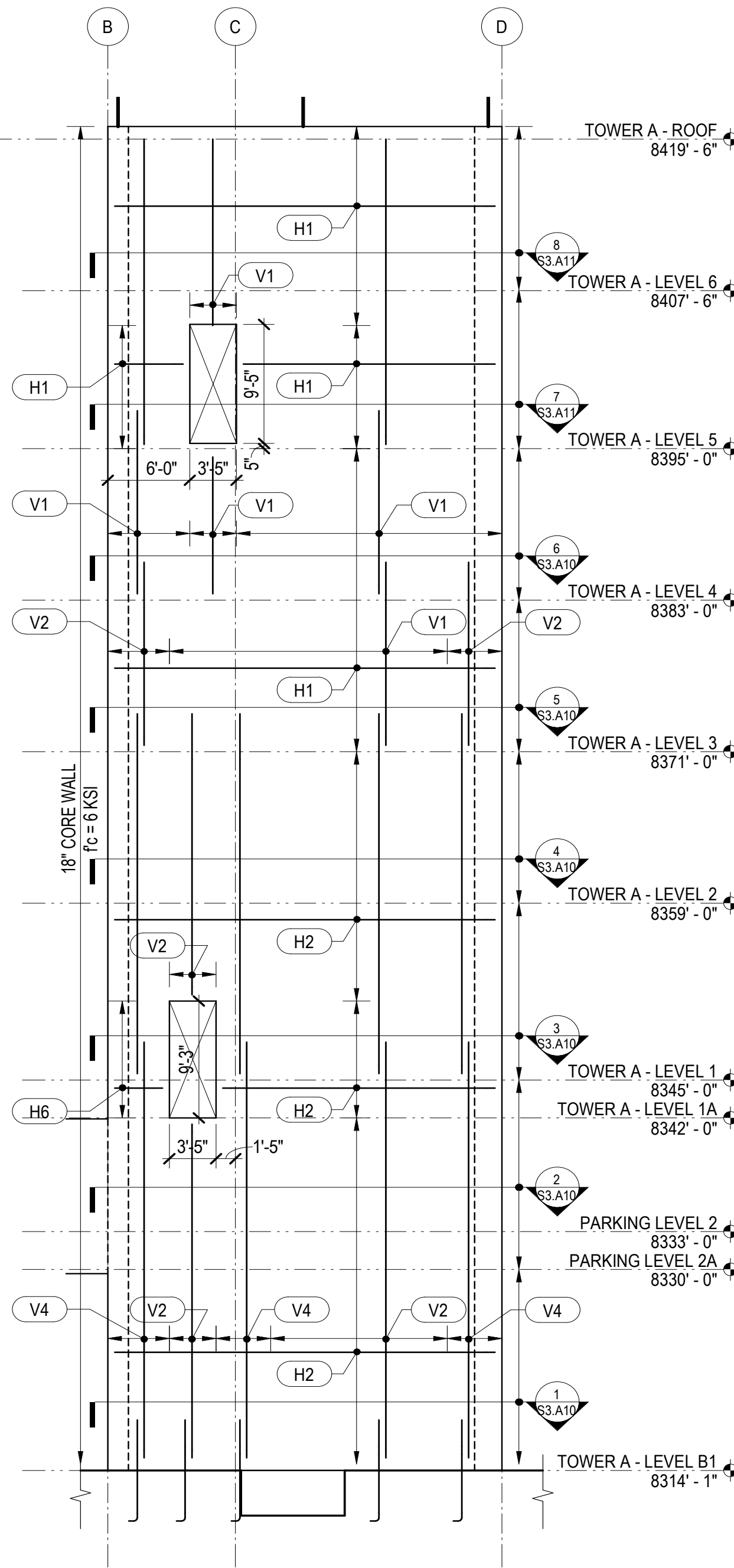
1 NORTH SHEAR WALL ELEVATION  
1/8" = 1'-0"



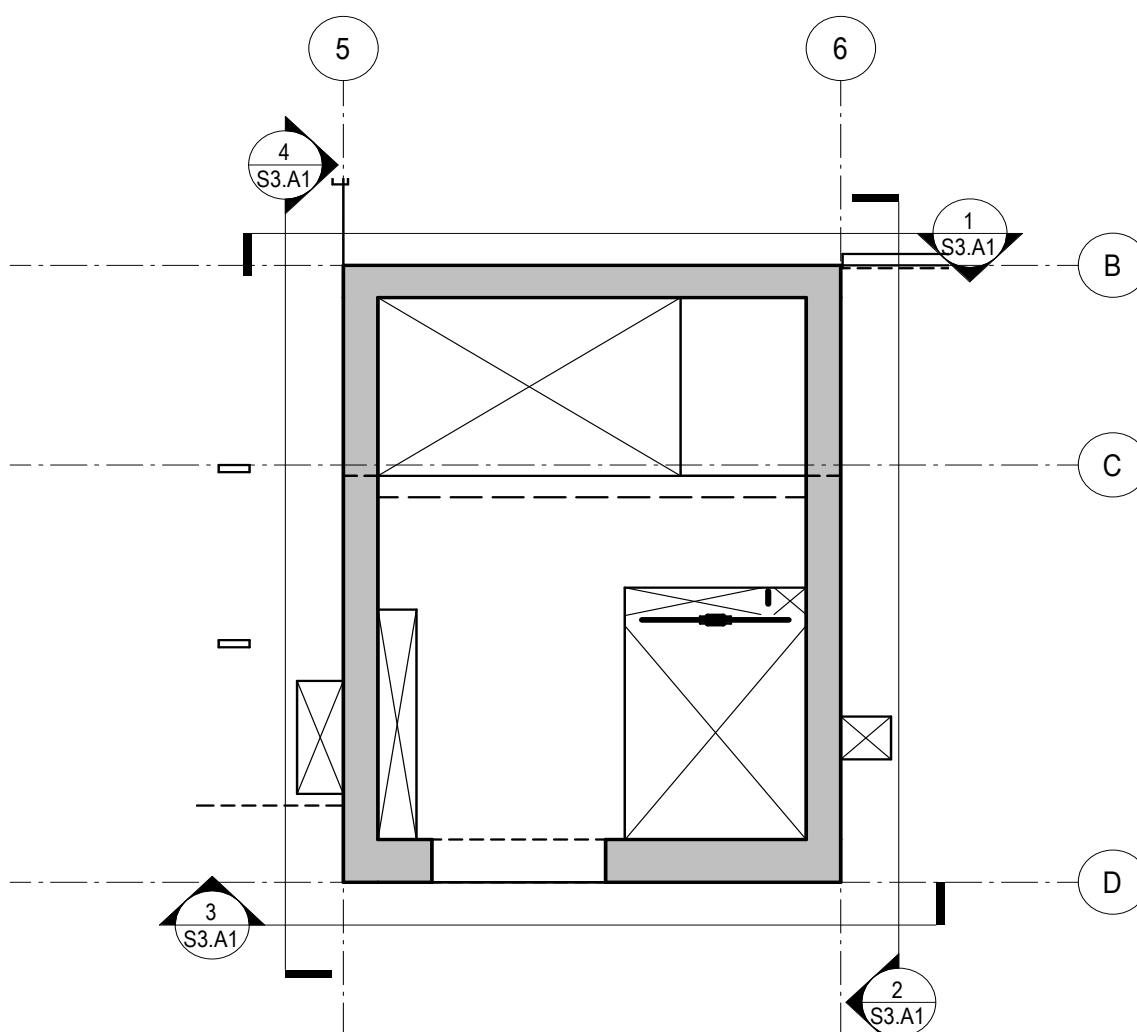
2 EAST SHEAR WALL ELEVATION  
1/8" = 1'-0"



3 SOUTH SHEAR WALL ELEVATION  
1/8" = 1'-0"



4 WEST SHEAR WALL ELEVATION  
1/8" = 1'-0"



TOWER A WEST CORE WALL ELEVATION - KEY PLAN

S3.A1