



Olson Kundig

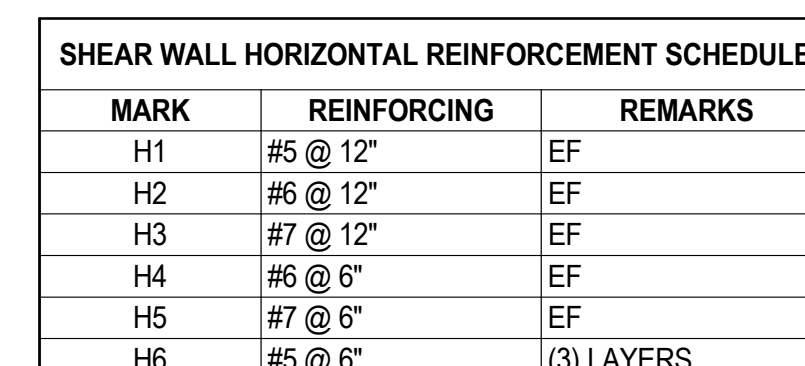
project: **SOMMET BLANC - ABC**  
**DEER VALLEY, UTAH**

**Structural + Civil Engineers**  
Seattle Chicago  
www.mko.ca  
800.600.3000

revisions:

04/08/2024

### S3.C1



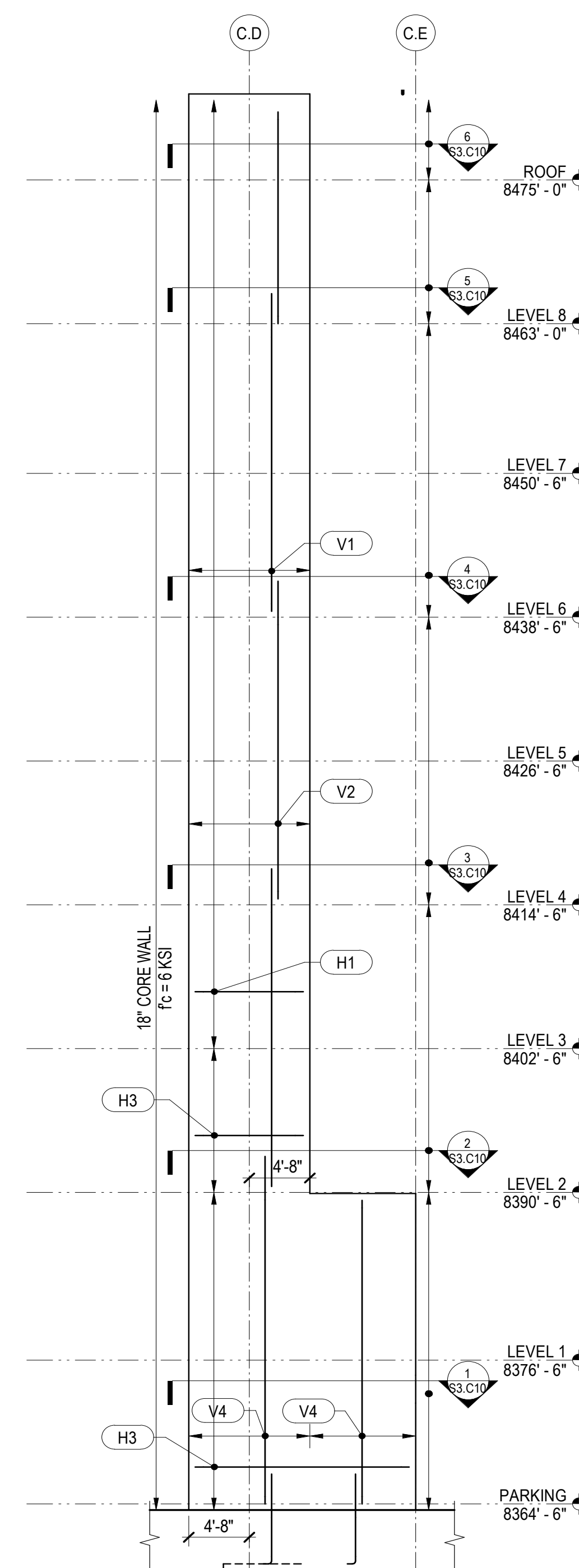
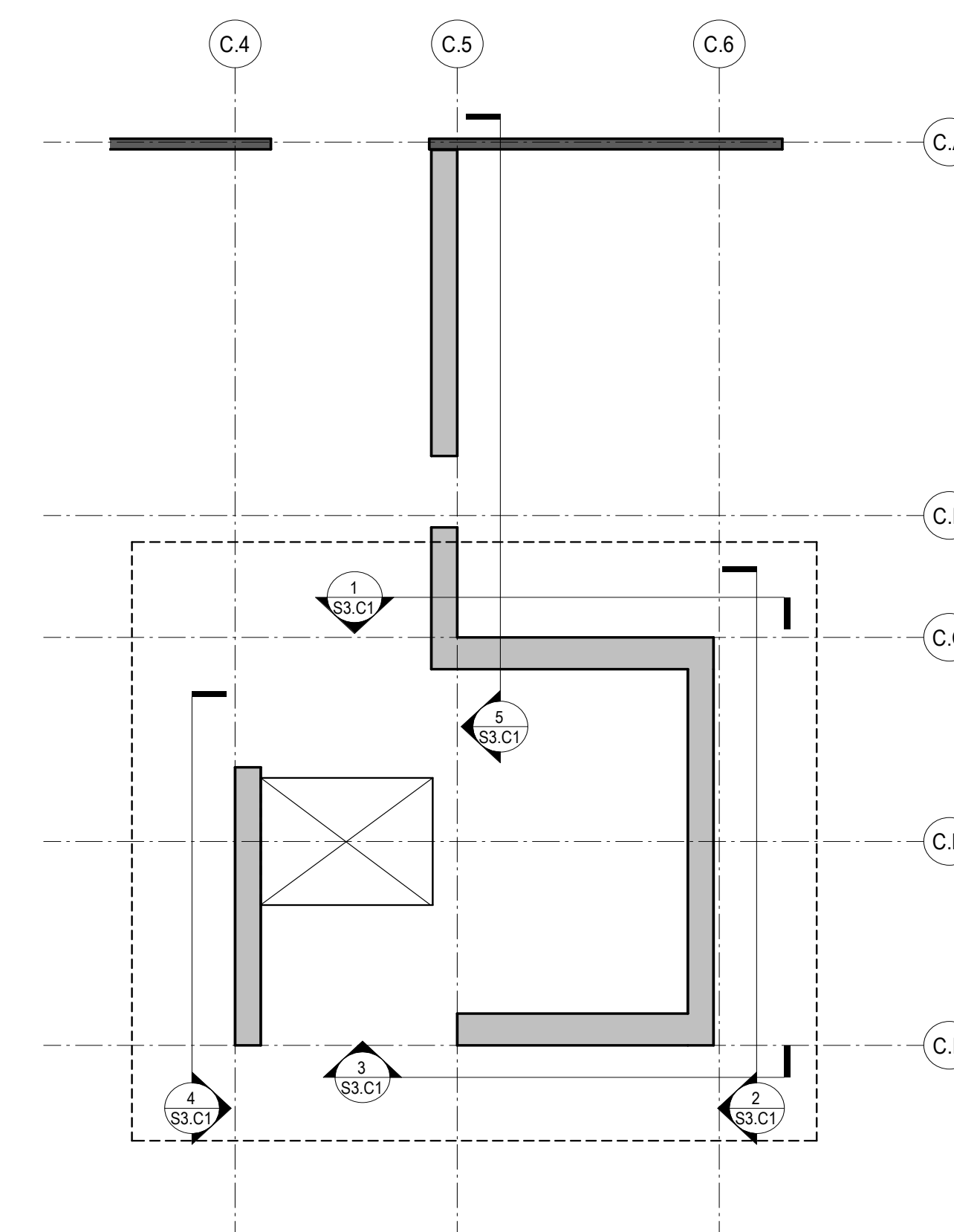
5 SHEAR WALL ELEVATION  
1/8" = 1'-0"

### REFERENCE DRAWINGS

|       |  |
|-------|--|
| S0.XX | DRAWING INDEX, ABBREVIATIONS, LEGENDS, GENERAL NOTES |
| S1.XX | LOAD DIAGRAMS  |
| S2.XX | PLANS  |
| S3.XX | ELEVATIONS   |
| S4.XX | TYPICAL DETAILS AND SCHEDULES                        |
| S5.XX | CONCRETE SECTIONS AND DETAILS                        |
| S6.XX | STEEL SECTIONS AND DETAILS                           |

NOTES:

1. CORE WALL OPENINGS REMAIN THE SAME SIZE AS THE DIMENSIONED OPENING BELOW, UNLESS NOTED OTHERWISE.
2. WALL OPENINGS AND SLEEVE PENETRATIONS NOT SPECIFICALLY INDICATED ON THE STRUCTURAL DRAWINGS SHALL BE APPROVED BY THE STRUCTURAL ENGINEER PRIOR TO CONSTRUCTION.
3. FOUNDATION DOWELS SHALL MATCH SIZE AND SPACING OF SHEAR WALL VERTICAL BARS ABOVE. EXTEND DOWELS TO BOTTOM OF FOUNDATION WITH 90 DEGREE HOOK.
4. VERTICAL REINFORCEMENT RETAINS THE SAME MARK AS FOR THE STORY BELOW, UNLESS NOTED OTHERWISE.
5. LAP VERTICAL REINFORCEMENT L<sub>5b</sub>, UNLESS NOTED OTHERWISE. AT THE CONTRACTOR'S OPTION VERTICAL REINFORCEMENT MAY BE SPICED AT INTERMEDIATE LEVELS, UNLESS NOTED OTHERWISE.
6. LAP HORIZONTAL REINFORCEMENT L<sub>5d</sub>, UNLESS NOTED OTHERWISE. WHERE LAPS NOT EXPLICITLY SHOWN IN SHEAR WALL SECTIONS, CONTRACTOR SHALL SUBMIT ANY ADDITIONAL LAP LOCATIONS FOR REVIEW BY THE ENGINEER.
7. SEE SHEAR WALL SECTIONS FOR ADDITIONAL REINFORCEMENT NOT SHOWN ON SHEAR WALL ELEVATIONS.
8. (1A) INDICATES A CONCRETE COUPLING BEAM. SEE "TYPICAL CONCRETE COUPLING BEAM DETAILS AND SCHEDULES" FOR REINFORCEMENT.
9. CONCRETE PLACED IN THE COUPLING BEAMS, INCLUDING THROUGHOUT THE SLAB DEPTH, SHALL MEET THE SAME SPECIFICATIONS AS FOR THE SHEAR WALLS. SEE GENERAL NOTES FOR CRITERIA.
10. SEE GENERAL NOTES FOR REINFORCEMENT THAT SHALL MEET SPECIAL DUCTILE QUALITY CRITERIA.



1 NORTH SHEAR WALL ELEVATION  
1/8" = 1'-0"

2 EAST SHEAR WALL ELEVATION  
1/8" = 1'-0"

3 SOUTH SHEAR WALL ELEVATION  
1/8" = 1'-0"

4 WEST BLADE WALL ELEVATION  
1/8" = 1'-0"

TOWER C SHEAR WALL ELEVATION - KEY PLAN