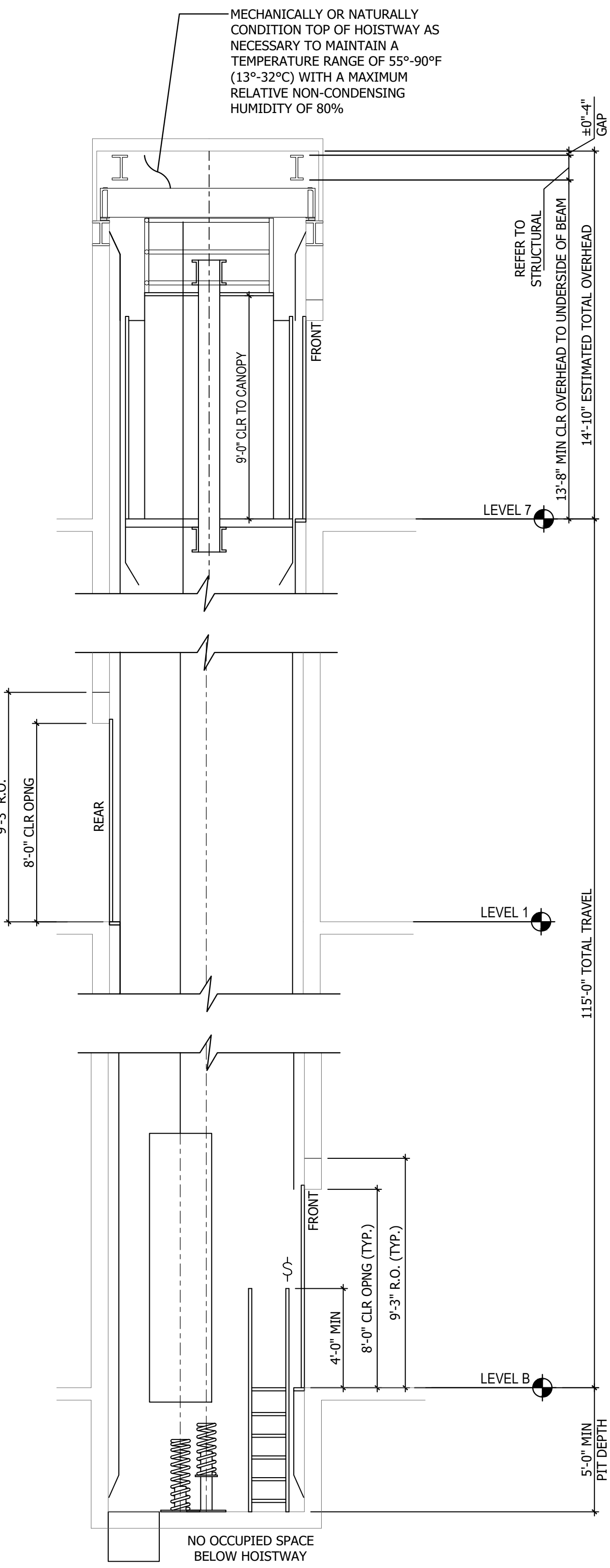
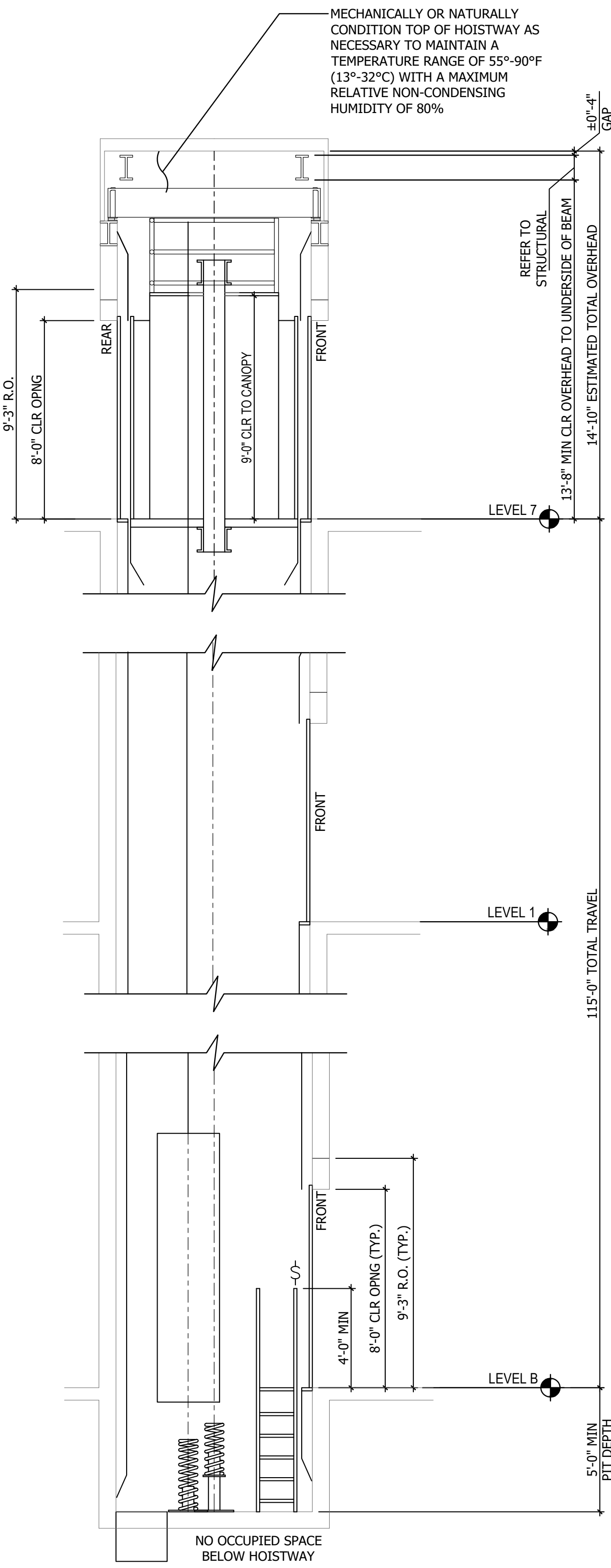


NOTES:  
- APPLICATION DESIGNED FOR:  
TKE - REFER TO MANUFACTURER SHOP DRAWINGS  
PIT AND OVERHEAD PLANS INDICATE REACTIONS FOR MACHINE ROOM-LESS EQUIPMENT OF VARIOUS ELEVATOR VENDORS. WHERE REACTIONS OF DIFFERENT VENDORS OVERLAP, THE HIGHER REACTION IS INDICATED. REACTIONS FOR ONE VENDOR DO NOT OCCUR WITH THE REACTIONS OF OTHER VENDORS. OVERHEAD PLANS ARE NOT SHOWN FOR VENDORS WITH NO REACTIONS IN THE OVERHEAD.



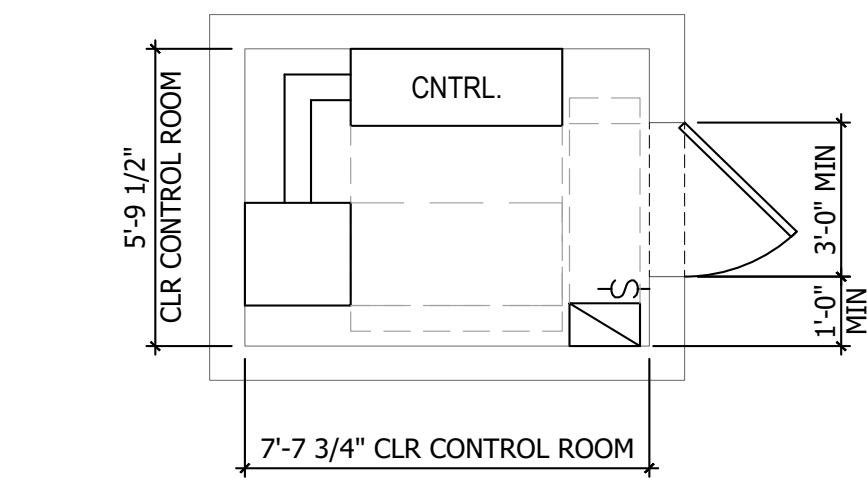
1 HOISTWAY SECTION - TENANT 4  
SCALE: 1/4" = 1'-0"

ALL VERTICAL DIMENSIONS THAT ARE DIMENSIONED FROM A BUILDING FLOOR ELEVATION ARE DIMENSIONED TO THE FINISH FLOOR ELEVATION.			
ELEVATOR TENANT 4			
FLOOR NUMBER	OPENING REAR/FRONT	FLOOR TRAVEL (FEET)	
7	F	0'-0"	
6	F	12'-0"	
5	F	12'-0"	
4	F	12'-0"	
3	F	12'-0"	
2	F	12'-0"	
1A	F	14'-0"	
1	R	5'-0"	
P1	F	12'-0"	
P2	F	12'-0"	
B	F	12'-0"	
OPENINGS	1	10	
TOTALS			
STOPS	11		
TRAVEL		115'-0"	

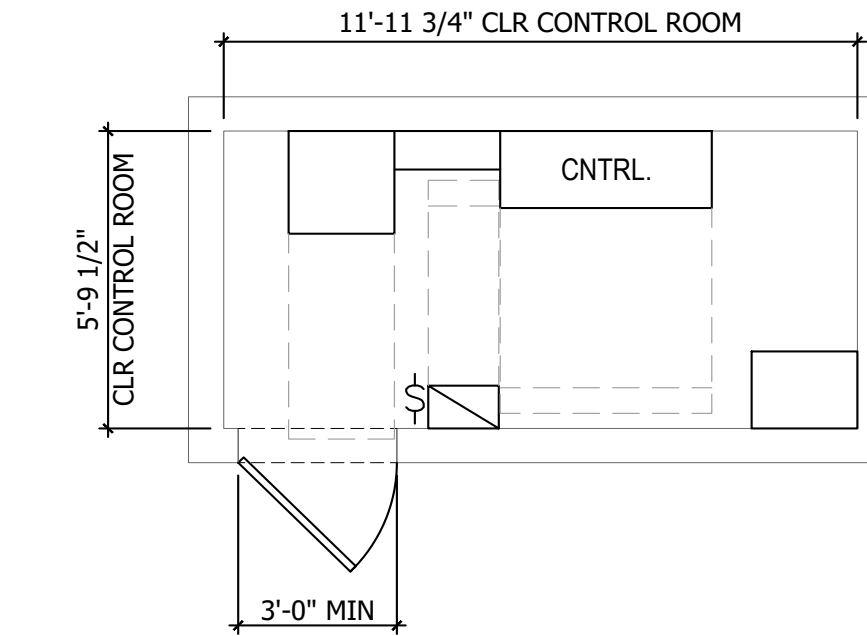


2 HOISTWAY SECTION - TENANT 3  
SCALE: 1/4" = 1'-0"

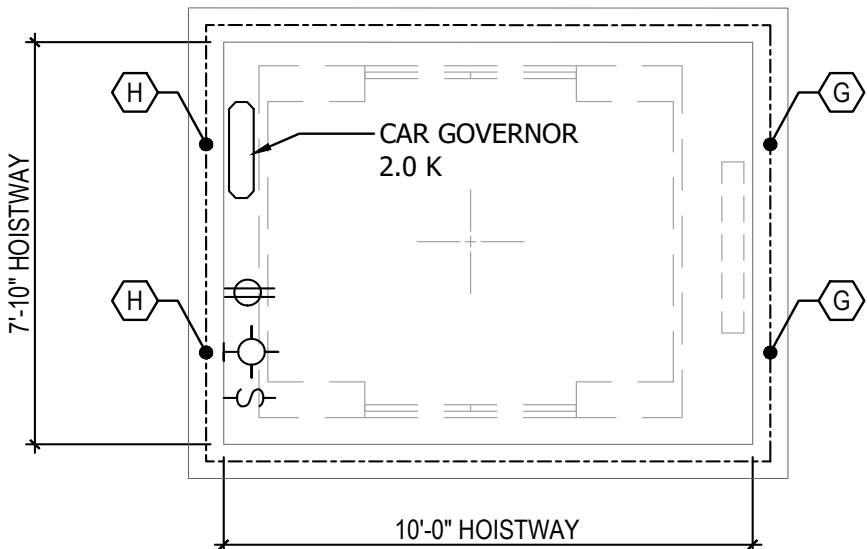
ALL VERTICAL DIMENSIONS THAT ARE DIMENSIONED FROM A BUILDING FLOOR ELEVATION ARE DIMENSIONED TO THE FINISH FLOOR ELEVATION.			
ELEVATOR TENANT 3			
FLOOR NUMBER	OPENING REAR/FRONT	FLOOR TRAVEL (FEET)	
7	R	F	0'-0"
6		F	12'-0"
5		F	12'-0"
4		F	12'-0"
3		F	12'-0"
2		F	12'-0"
1A		N/S	14'-0"
1		F	5'-0"
P1		F	12'-0"
P2		F	12'-0"
B		F	12'-0"
OPENINGS	1	10	
TOTALS			
STOPS	10		
TRAVEL		115'-0"	



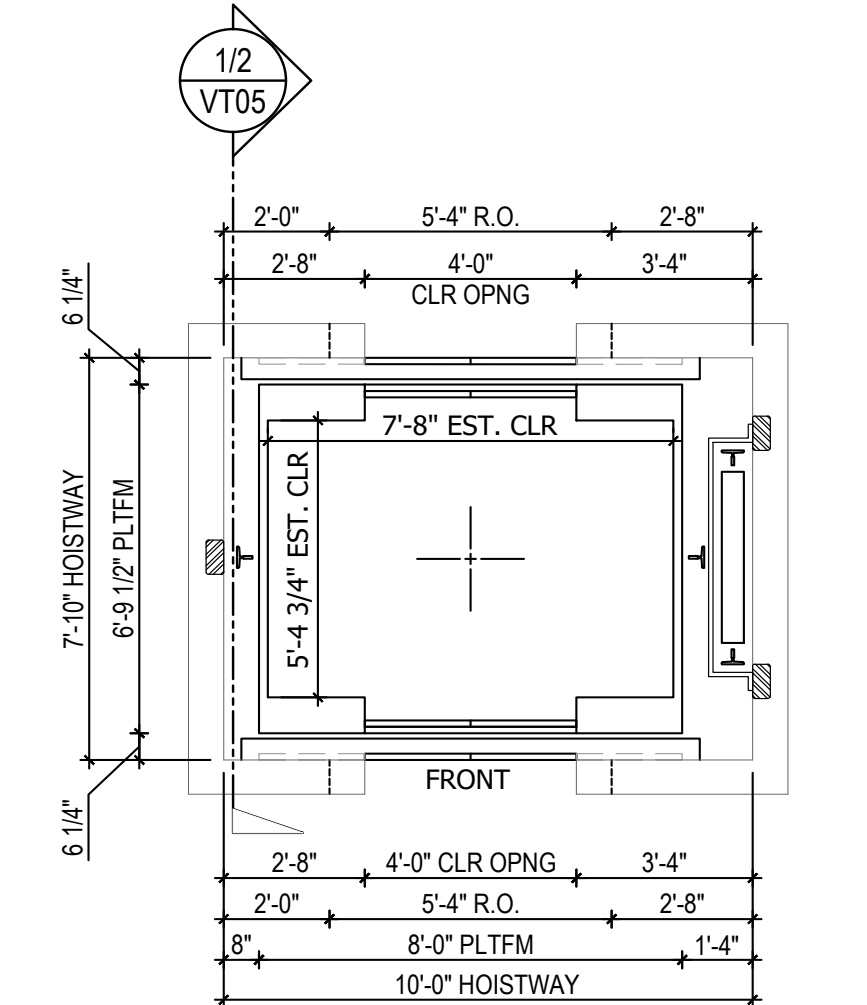
7 REMOTE CONTROL ROOM PLAN - LEVEL B - ELEVATOR TENANT 4  
SCALE: 1/4" = 1'-0"



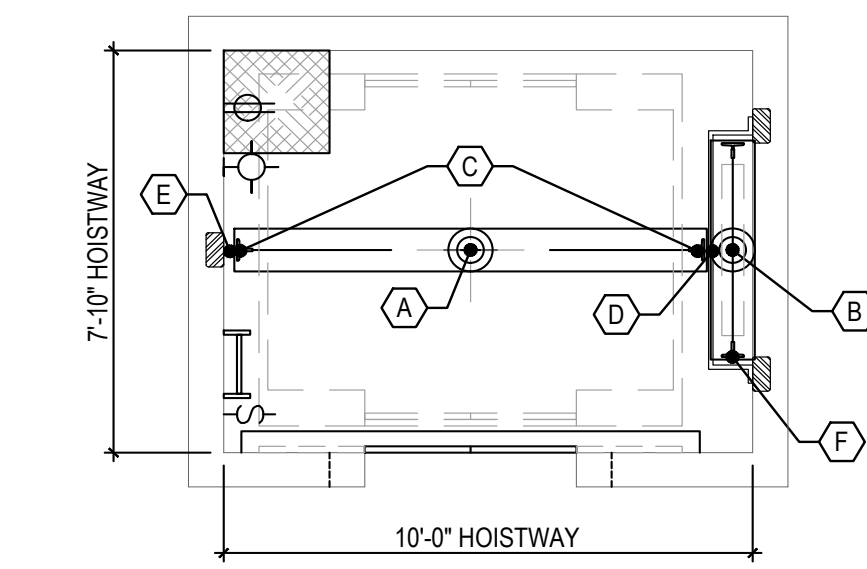
6 REMOTE CONTROL ROOM PLAN - LEVEL B - ELEVATOR TENANT 3  
SCALE: 1/4" = 1'-0"



5 OVERHEAD PLAN - LEVEL 7 - TENANT 3 (TENANT 4 SIM.)  
SCALE: 1/4" = 1'-0"



4 HOISTWAY PLAN - LEVEL 2 - TENANT 3 (TENANT 4 SIM.)  
SCALE: 1/4" = 1'-0"



3 PIT PLAN - LEVEL B - TENANT 3 (TENANT 4 SIM.)  
SCALE: 1/4" = 1'-0"

ELEVATORS TENANT 3 & 4 4000# @ 200 FPM MRL

#### OVERHEAD NOTES:

- PROVIDE ADEQUATE LIGHTING TO MAINTAIN MIN. 200 LUX (19 FC) ILLUMINATION AT TOP OF HOISTWAY.
- PROVIDE LIGHTS, LIGHT SWITCHES AND GFCI- PROTECTED UTILITY OUTLETS. COORDINATE LOCATIONS WITH ELEVATOR CONTRACTOR.
- PROVIDE STRUCTURAL SUPPORT TO SUSTAIN REACTIONS INDICATED.
- PROVIDE 2 LIFELINE ATTACHMENTS AT THE TOP FRONT OF EACH HOISTWAY. EACH ATTACHMENT SHALL BE CAPABLE OF WITHSTANDING 5000# (2268 KG) LOAD PER OSHA. COORDINATE LOCATION OF ATTACHMENTS WITH ELEVATOR CONTRACTOR.
- PROVIDE HOIST BEAM SUPPORT 15,000#. COORDINATE HOISTBEAM LOCATION(S) AND LOAD REQUIREMENTS WITH ELEVATOR CONTRACTOR.
- OVERHEAD DIMENSIONS ARE CLEAR FROM F.F. AT TOP LANDING TO STRUCTURE OR ANY OBSTRUCTION ABOVE CAR AND/OR COUNTERWEIGHT.
- MACHINE BEAM SUPPORT. THIS SUPPORT IS REQUIRED FOR ABOVE CAR MACHINE LOCATION. VERIFY MACHINE LOCATION WITH ELEVATOR CONTRACTOR.
- OVERHEAD REACTIONS VARY PER VENDOR BASED ON CWT LOCATION AND METHOD OF SUPPORT FOR HOIST MACHINE AND DEAD END HITCHES. COORDINATE FINAL REACTIONS WITH ELEVATOR SHOP DRAWINGS.

OVERHEAD REACTION TABLE		
DUTY: 4000# @ 200 FPM		
KEY	REACTION (FORCES IN KIPS)	
(A)	19.2	EACH
(B)	10.8	EACH

#### HOISTWAY NOTES:

- PROVIDE ACCESS PANEL AT TOP TERMINAL WHEN CONTROL ROOM IS REMOTE. COORDINATE SIZE AND LOCATION WITH ELEVATOR CONTRACTOR.
- FOR ABOVE CAR MACHINE LOCATION, ERECT ENTRANCE SIDE HOISTWAY WALL AT ELEVATOR EQUIPMENT STORAGE LEVEL AFTER ELEVATOR EQUIPMENT HAS BEEN INSTALLED IN HOISTWAY.
- PROVIDE SMOKE VENTING PER LOCAL CODE REQUIREMENTS.
- FOR CERTAIN MRL VENDORS, PROVIDE ADDITIONAL LATERAL SUPPORTS ABOVE THE TOP TERMINAL FOR THE LARGE GUIDE RAIL FORCES DUE TO HOIST MACHINE, DEFLECTOR SHEAVE, AND DEAD END HITCH LOADS. COORDINATE LOADING REQUIREMENTS AND LOCATIONS WITH ELEVATOR CONTRACTOR.
- ROUGH OPENINGS VARY BY MANUFACTURER. VERIFY ROUGH OPENING BEFORE CONSTRUCTION.
- 1070 MM (42") CAR TOP RAILING PER CODE BY ELEVATOR CONTRACTOR.
- ABOVE CAR MACHINE LOCATION. VERIFY FINAL LOCATION WITH ELEVATOR CONTRACTOR.
- REAR/SIDE CWT MACHINE LOCATION. VERIFY FINAL LOCATION WITH ELEVATOR CONTRACTOR.
- PROVIDE STRUCTURAL SUPPORT, FOR CAR AND CWT GUIDE RAIL FASTENING AT MAX. VERTICAL SPACING THROUGH TOP OF HOISTWAY AS SPECIFIED IN RAIL SUPPORT TABLE. IF THIS SPACING CANNOT BE MAINTAINED, PROVIDE INTERMEDIATE SUPPORT BEAMS OR CONTINUOUS VERTICAL STRUCTURE BETWEEN FLOOR BEAMS.

RAIL SUPPORT TABLE		
156 RAILS		
CAR GUIDE RAIL	10'-6"	MAX SPAN
CWT GUIDE RAIL	10'-6"	MAX SPAN

#### CONTROL ROOM NOTES:

- PROVIDE SELF-CLOSING, SELF-LOCKING CONTROL ROOM ACCESS DOOR.
- PROVIDE ADEQUATE LIGHTING TO MAINTAIN MIN. 200 LUX (19 FC) ILLUMINATION AT CONTROL ROOM FLOOR.
- PROVIDE 3-PHASE MAINLINE POWER FEEDER WITH DISCONNECTING MEANS FOR EACH ELEVATOR CONTROLLER.
- PROVIDE 1-PHASE FEEDER WITH DISCONNECTING MEANS FOR CAR LIGHTING, VENTILATION SYSTEM AND RECEPTACLE FOR EACH ELEVATOR. THESE DISCONNECTING MEANS SHALL INCLUDE OVERCURRENT PROTECTION, SHALL BE LOCATED IN THE MACHINE ROOM, AND SHALL MEET N.E.C. REQUIREMENTS.
- FOR MOST VENDORS, CONTROLLER MUST BE WITHIN 100' WIRE RUN LENGTH FROM THE CORRESPONDING MACHINE AT THE TOP OF THE HOISTWAY.

#### PIT NOTES:

- PROVIDE ADEQUATE LIGHTING TO MAINTAIN MIN. 100 LUX (10 FC) ILLUMINATION AT PIT FLOOR.
- PROVIDE PIT ACCESS LADDER(S) OR DOOR(S), LIGHT SWITCH(ES), LIGHT(S), AND GFCI-PROTECTED UTILITY OUTLET(S).
- COORDINATE LIGHT FIXTURES AND UTILITY OUTLETS LOCATION WITH ELEVATOR CONTRACTOR.
- PROVIDE ADEQUATE STRUCTURAL SUPPORT REQUIRED FOR BUFFER AND R3 RAIL FORCE REACTIONS.
- ELEVATOR CONTRACTOR PROVIDE PERMANENT MEANS TO ACCESS UNDERSIDE OF CAR AS REQUIRED.
- PROVIDE INDIRECT PIT DRAIN OR 24"x24"x24" SUMP PUMP, WITH GRATING COVER, LEVEL WITH PIT FLOOR. PROVIDE MINIMUM SUMP PUMP/DRAIN CAPACITY OF 3000 GALLONS/HOUR PER ELEVATOR.
- ELEVATOR CONTRACTOR IS TO PROVIDE A COUNTERWEIGHT GUARD PER CODE.
- ELEVATOR CONTRACTOR TO PROVIDE BUFFER ACCESS PLATFORM AND LADDER AS REQUIRED.
- CAR/CWT BUFFER REACTIONS WILL NOT OCCUR SIMULTANEOUSLY. UNLESS SPECIFIED OTHERWISE.
- REACTIONS HAVE BEEN DOUBLED FOR IMPACT.

PIT REACTION TABLE		
DUTY: 4000# @ 200 FPM		
KEY	REACTION (FORCES IN KIPS)	DESCRIPTION
(A)	53.3	CAR BUFFER
(B)	48.8	CWT BUFFER
(C)	32.2	EACH CAR SAFETY (SEE CAR R3 RAIL FORCES)
ALTERNATE PIT REACTIONS FOR RAIL SUPPORTED MACHINE		
THE FOLLOWING REACTIONS DO OCCUR SIMULTANEOUSLY.		
(D)	32.0	EACH DRIVE MACHINE LOAD ON CAR RAIL COMBINED WITH CWT DEH LOAD ON CWT RAIL
(E)	23.0	EACH DYNAMIC LOAD ON CAR RAIL
(F)	10.7	EACH DYNAMIC LOAD ON CWT RAIL

No.	Description	Date

Sheet Name

#### PLANS AND HOISTWAY SECTIONS - TOWER B - ELEVATORS TENANT 3 & 4

Issued For:

IFC SET

Project Number: 160-0100033534-01

Governing Codes: ASME A17.1

Date: 07/15/2022

Drawn By: JD

Checked By: BA, JB

Sheet Number:

VT05

Scale AS NOTED

FOR PROCUREMENT ONLY