

ENLARGED PLAN AND ELEVATION GENERAL NOTES

1. REFER TO SHEET A1.08 FOR ANSI OPTION A & OPTION B ACCESSIBILITY REQUIREMENTS
2. REFER TO SHEET A1.07 FOR ANSI TYPE A ACCESSIBILITY REQUIREMENTS
3. REFER TO SHEET A1.06 FOR ADA - PUBLIC SPACE ACCESSIBILITY REQUIREMENTS
4. ALL MAX. MIN. ALIGN AND CLEAR DIMENSIONS ARE TO FINISHED FACE OF WALL, U.N.D.
5. WHERE CLEAR AND ALIGN NOTATION CONFLICT WITH SPECIFIC DIMENSIONS, CLEAR AND ALIGN NOTATION ARE TO BE FOLLOWED



109 South Jackson St., Suite 600  
Seattle, Washington 98104 USA  
+1 206 834 2870 olsonkundig.com

Olson Kundig

SOMMET BLANC  
9300 MARSAC AVE  
PARK CITY, UT 84060



Aspen Group USA, LLC  
PO Box 980022  
Park City, Utah 84098

Pool Consultant  
Cloward M20  
2696 N University Ave, Suite 290  
Provo, UT 84604

Landscape Architect  
EPG Design  
6948 South High Tech Drive, Suite 100  
Midvale, Utah 84047

Specifications Writer  
Friday Group  
86 Mainelli Road  
Middlebury, VT

Code Consultant  
Holmes  
600 1st Avenue, Suite 200A  
Seattle, WA 98104

Fire Protection Engineer  
Jensen Hughes  
One Research Drive, Suite 305C  
Westborough, MA 01581

Vertical Transportation Consultant  
Larch Bates  
19515 North Creek Parkway, Suite 304  
Bothell, WA 98011

Structural Engineer  
Magnusson Klemencic Associates  
1301 5th Ave, Suite 3200  
Seattle, WA 98101

Lighting Designer  
O-  
1319 SE MLK Blvd, Suite 210  
Portland, Oregon 97219

Building Envelope Consultant  
RDH  
2101 N 34th St  
Seattle, WA 98103

Accessibility Consultant  
Studio Pacifica  
2144 Westlake Ave N, Suite F  
Seattle, WA 98109

MEP Engineer  
WSP USA  
1001 Fourth Ave., Suite 3100  
Seattle, WA 98154

principal architect: TK, KM  
project manager: TM, JB, SS, MD  
drawn by: SK, SS, JR, CP, EA  
JF, BD

checked by: JB  
job no. 2052  
date 05/31/2024

revisions:

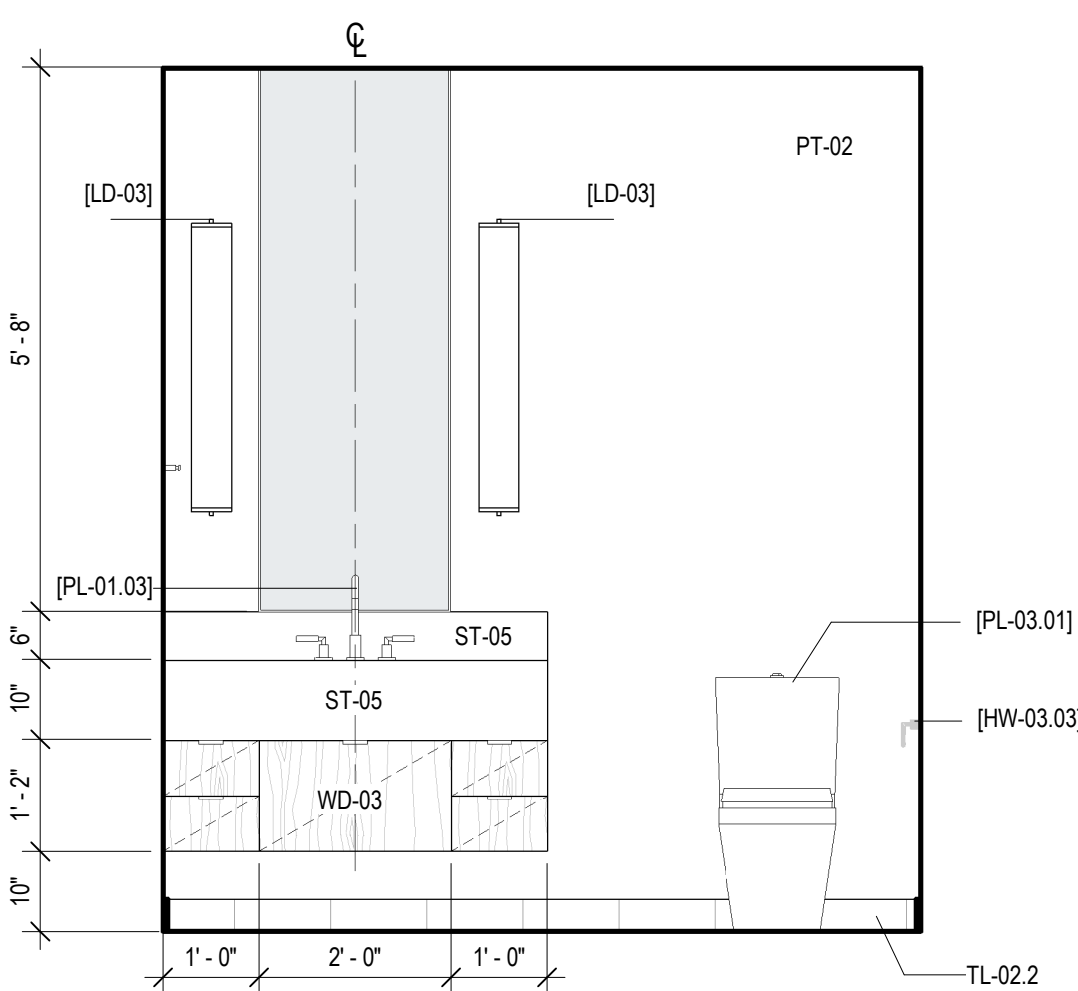
B 07/19/24 ASI 001  
09/30/22 BUILDING PERMIT  
RESIDENTIAL, 1F

no. date by

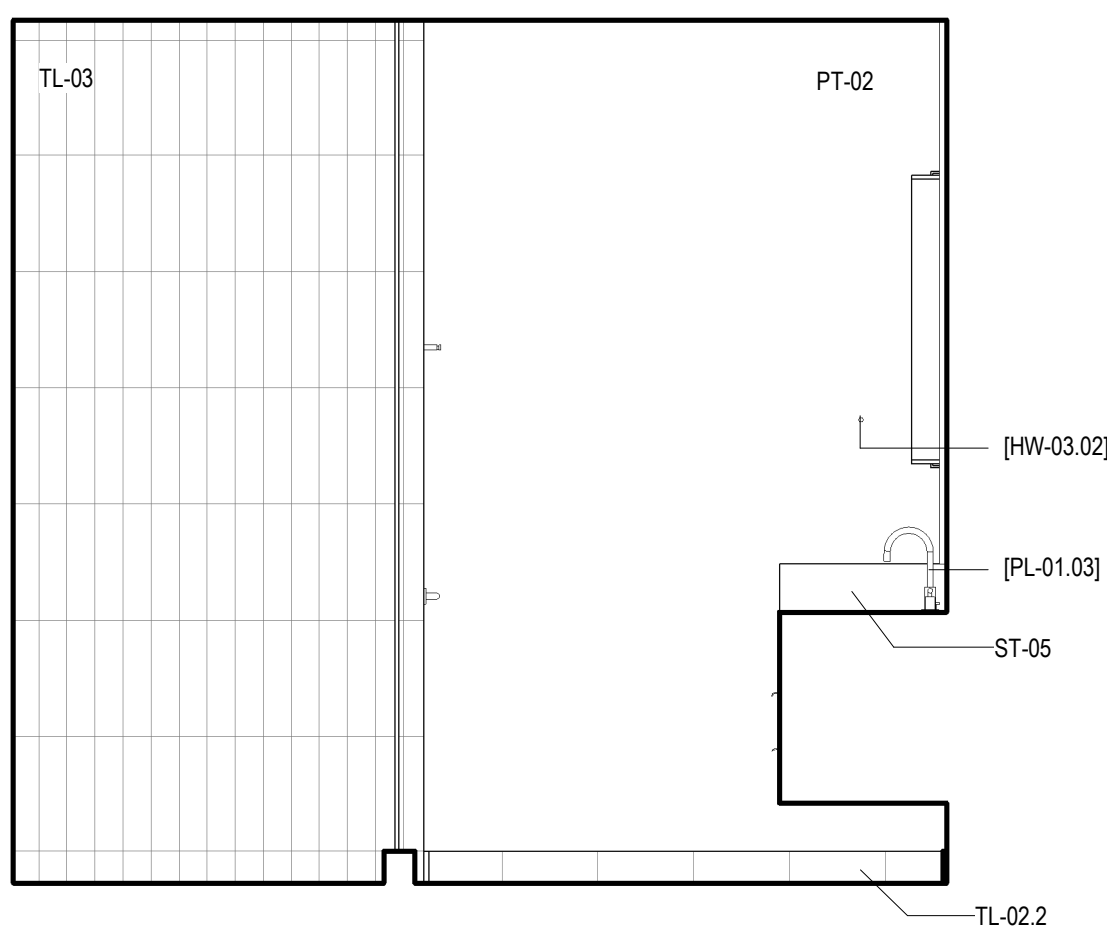
IFC SET 3 OF 3  
05/31/2024

INTERIOR ELEVATIONS -  
ANSI POWDER

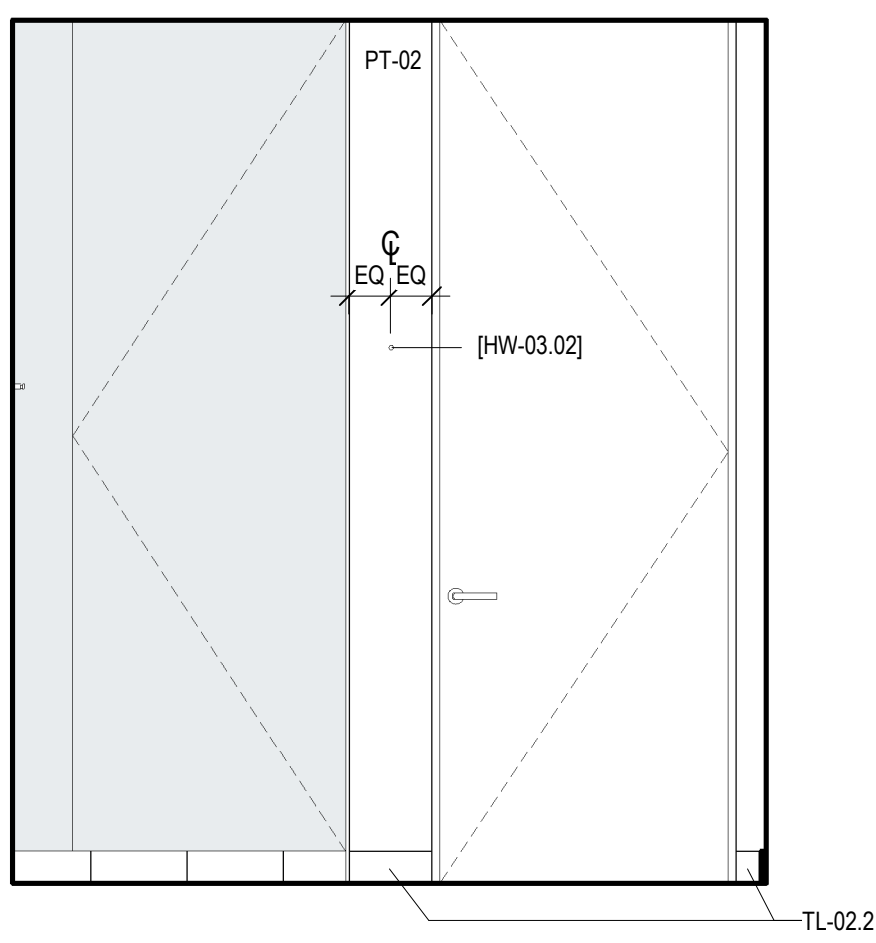
A5.3.41



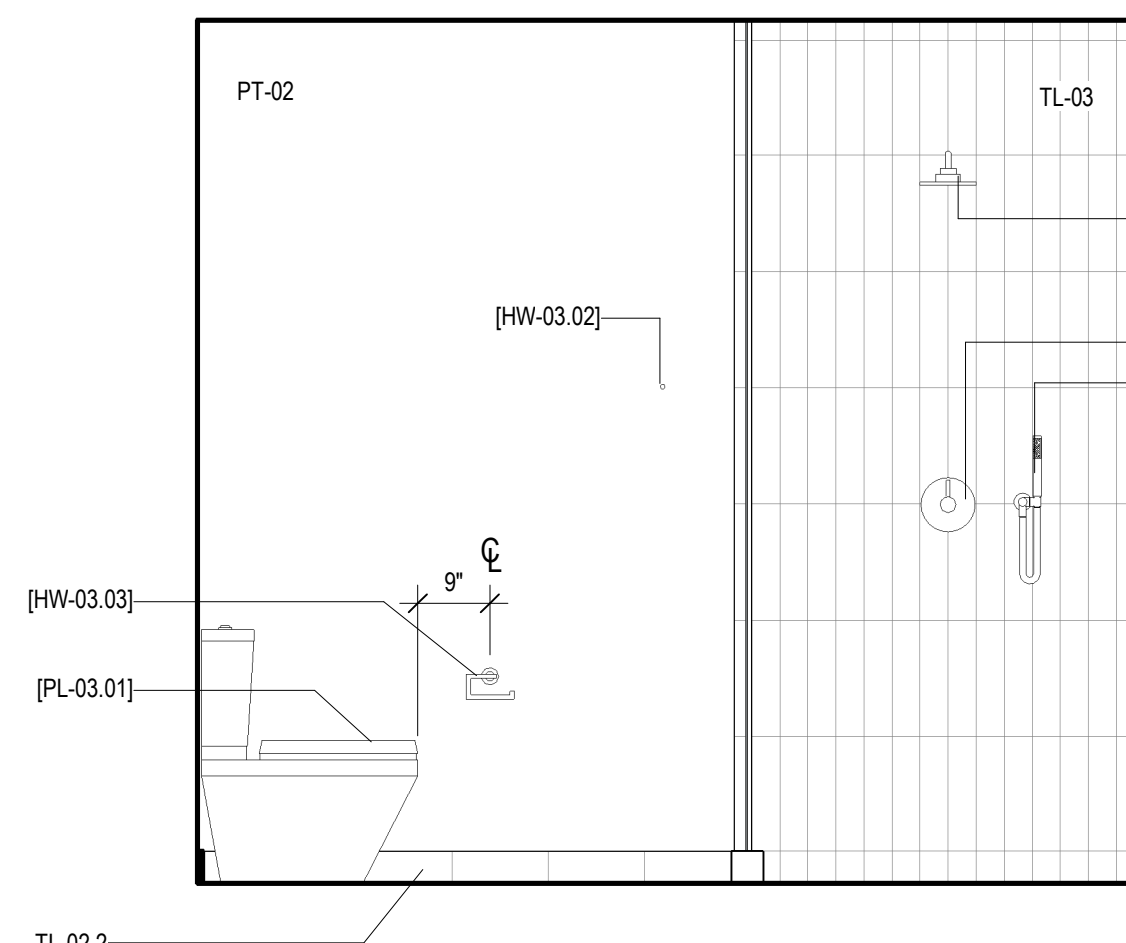
5 POWDER ANSI B - D  
SCALE: 1/2" = 1'-0"



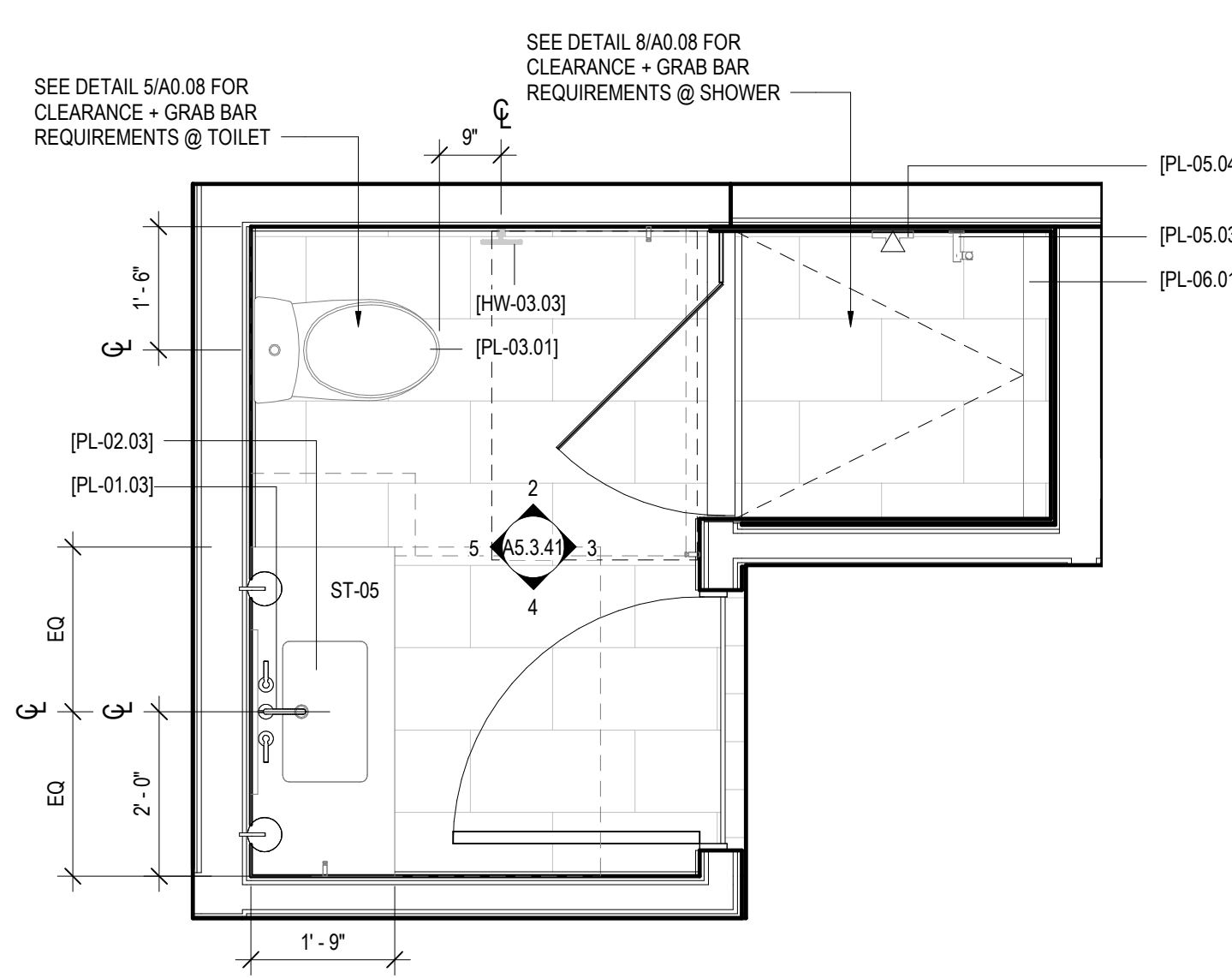
4 POWDER ANSI B - C  
SCALE: 1/2" = 1'-0"



3 POWDER ANSI B - B  
SCALE: 1/2" = 1'-0"



2 POWDER ANSI B - A  
SCALE: 1/2" = 1'-0"



1 ENLARGED PLAN - ANSI OPTION B - POWDER  
SCALE: 1/2" = 1'-0"