

REFERENCE DRAWINGS

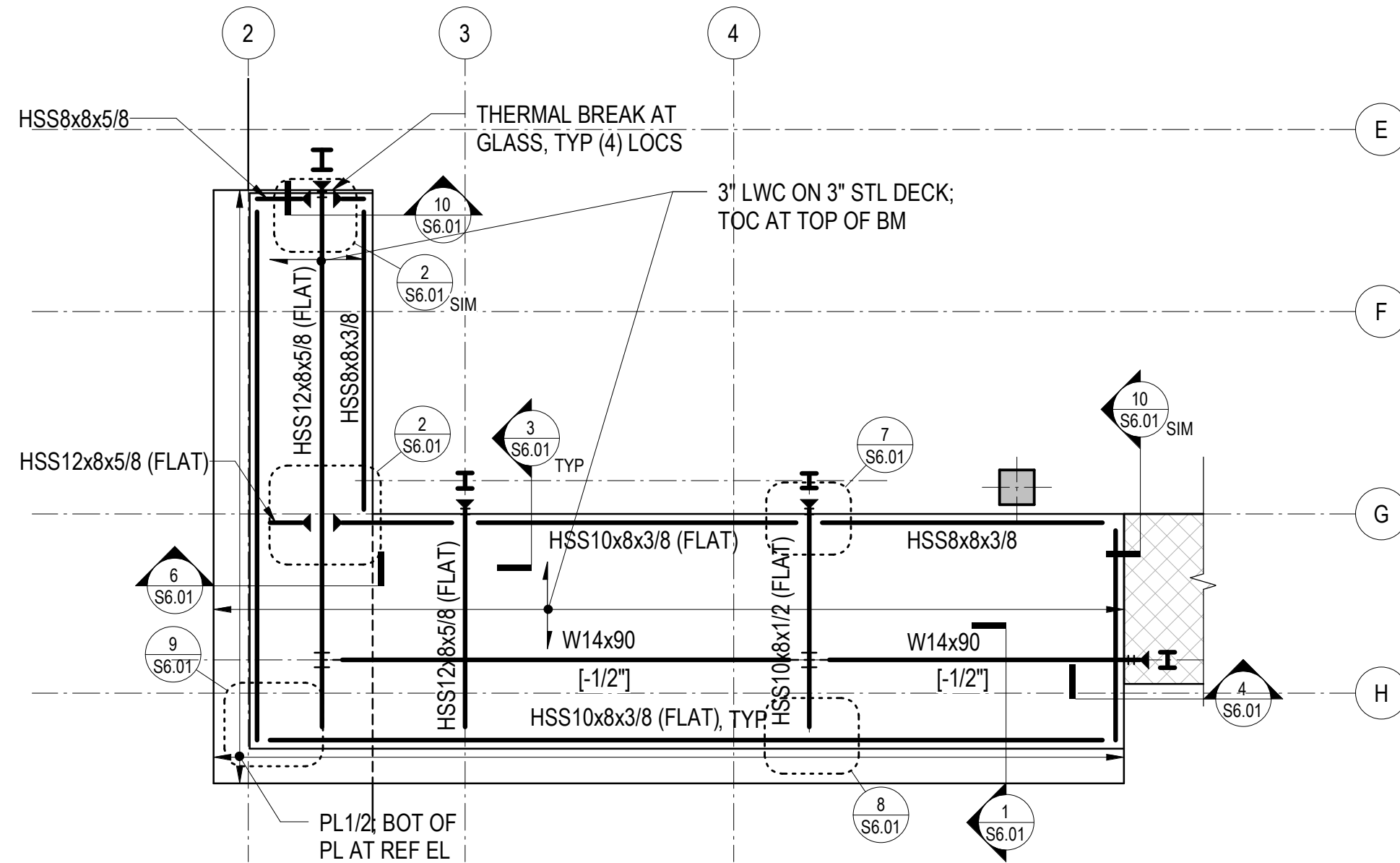
- S0.XX DRAWING INDEX, ABBREVIATIONS, LEGENDS, GENERAL NOTES
- S1.XX LOAD DIAGRAMS
- S2.XX PLANS
- S3.XX ELEVATIONS
- S4.XX TYPICAL DETAILS AND SCHEDULES
- S5.XX CONCRETE SECTIONS AND DETAILS
- S6.XX STEEL SECTIONS AND DETAILS

NOTES

- REFER TO CORRESPONDING ROOF FRAMING PLAN FOR ADDITIONAL SHEET NOTES.
- FRAMING PLAN INDICATES HSS FRAMING THAT IS EMBEDDED WITHIN THE SLAB ON STEEL DECK THICKNESS.
- BOTTOM OF STEEL IS AT THE BOTTOM OF SLAB ON STEEL DECK.

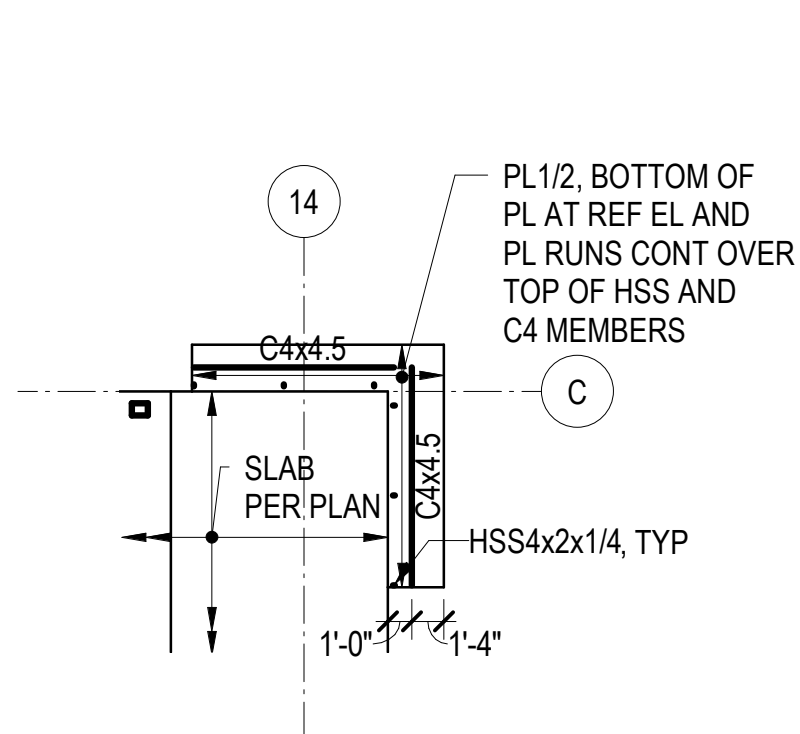
7 PARTIAL PLAN - LEVEL 6 EMBEDDED HSS ROOF FRAMING

1/8" = 1'-0"



12 PARTIAL PLAN - RESTAURANT CANOPY

1/8" = 1'-0"

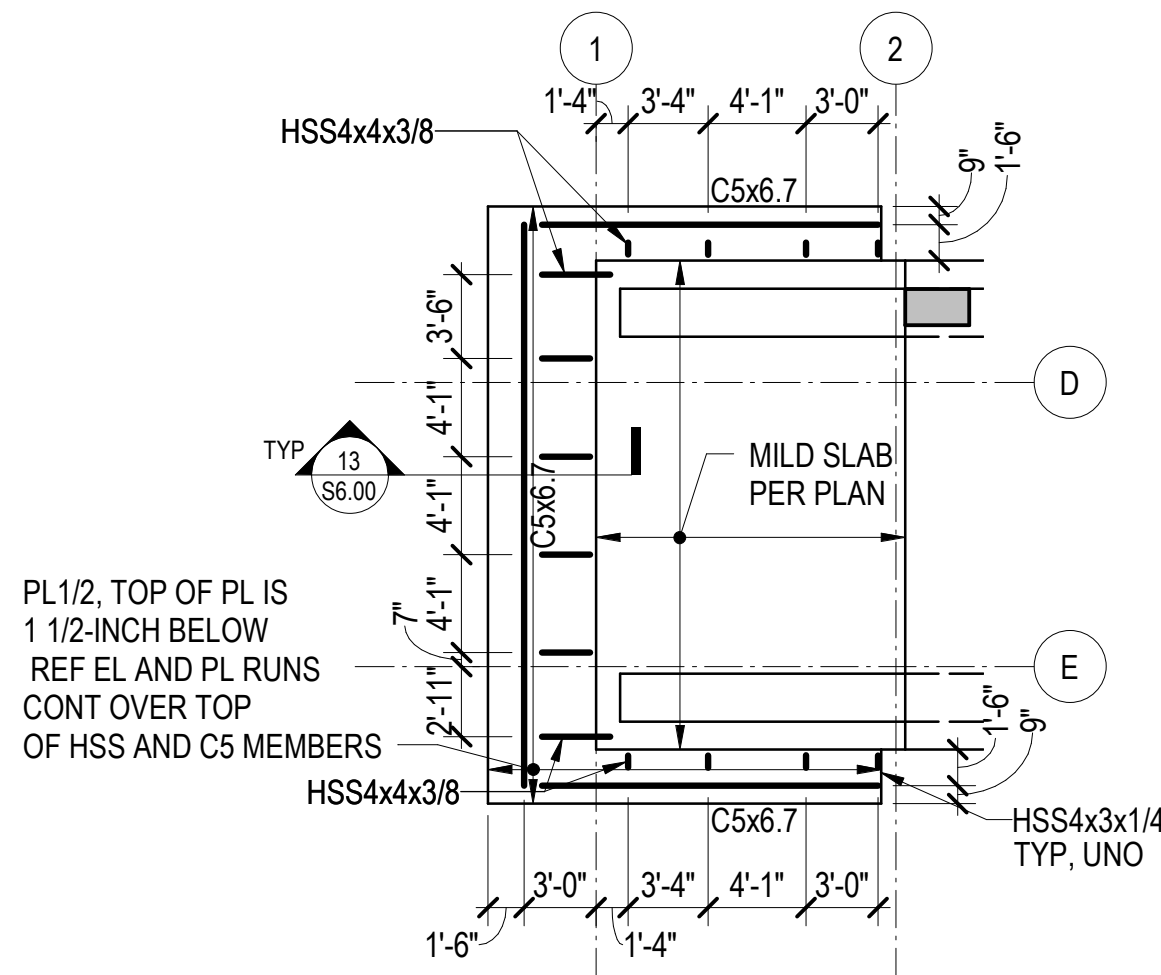


NOTES

- REFERENCE FLOOR ELEVATIONS ARE:
TOWER A LEVEL 4: 8383'-0"
TOWER A LEVEL 5: 8407'-6"
TOP OF STEEL IS AT THE REFERENCE FLOOR ELEVATION UNLESS NOTED OTHERWISE.
- SEE ARCHITECTURAL DETAILS FOR ADDITIONAL INFORMATION.

17 PARTIAL PLAN - TOWER A EAST SUNSHADES

1/8" = 1'-0"

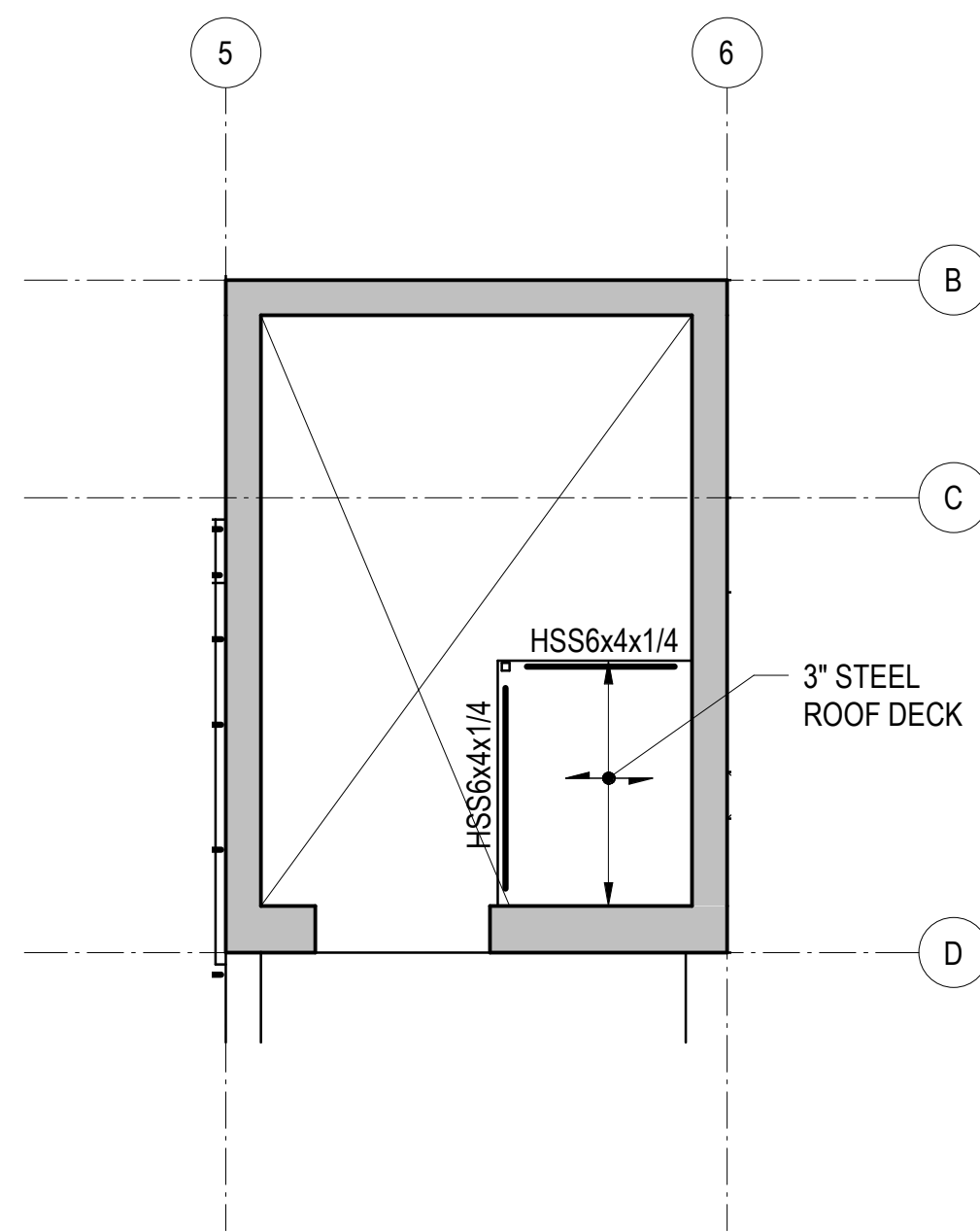


NOTES

- REFERENCE FLOOR ELEVATIONS ARE:
TOWER A LEVEL 3: 8371'-0"
TOWER A LEVEL 5: 8383'-6"
- SEE ARCHITECTURAL DETAILS FOR ADDITIONAL INFORMATION.

18 PARTIAL PLAN - TOWER A SUNSHADES

1/8" = 1'-0"

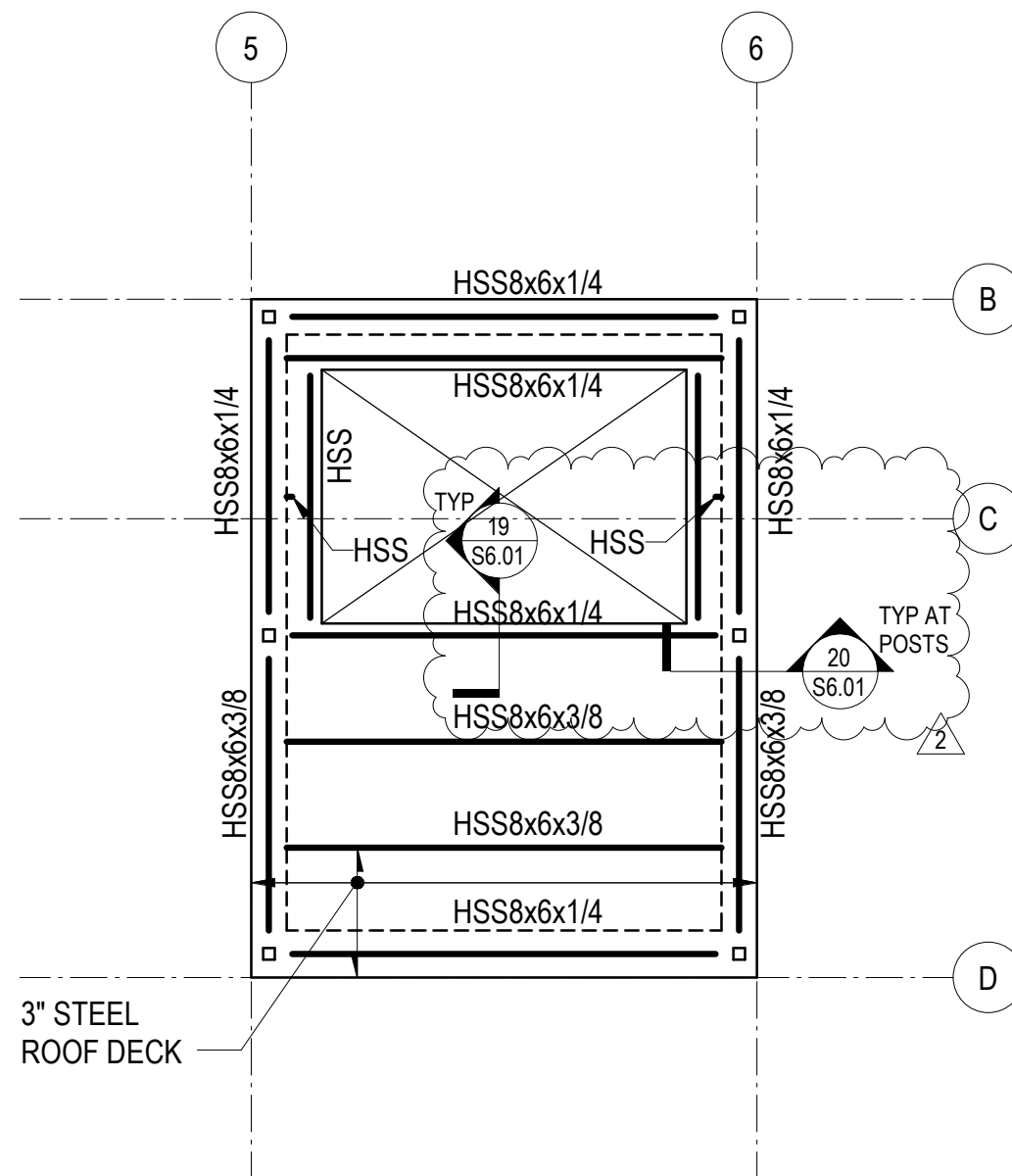


NOTES

- REFERENCE FLOOR ELEVATION IS 8410'-7". REFERENCE TOP OF STRUCTURAL STEEL IS 3-INCHES BELOW THE REFERENCE FLOOR ELEVATION, TYPICAL UNLESS NOTED OTHERWISE.
- ROOF DECK IS MINIMUM 3-INCH x 20 GAUGE STEEL DECKING. DECKING IS TO BE INSTALLED IN MINIMUM THREE SPAN CONDITIONS WHERE POSSIBLE.

9 PARTIAL PLAN - WEST CORE ELEV OVERRUN

1/8" = 1'-0"

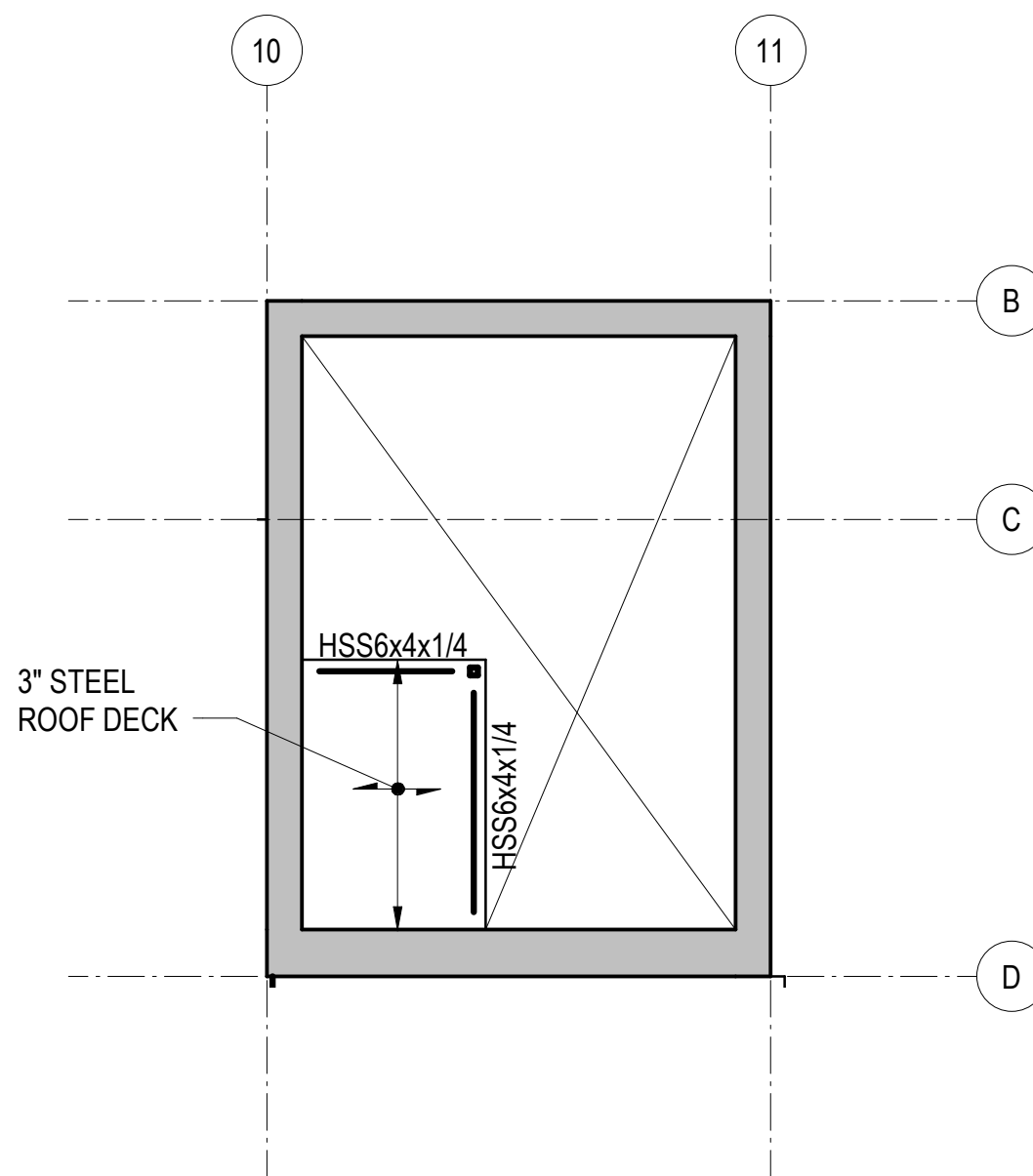


NOTES

- REFERENCE FLOOR ELEVATION IS 8423'-3". REFERENCE TOP OF STRUCTURAL STEEL IS AT THE REFERENCE FLOOR ELEVATION, TYPICAL UNLESS NOTED OTHERWISE.
- ROOF DECK IS MINIMUM 3-INCH x 20 GAUGE STEEL DECKING. TOP OF DECK IS AT TOP OF STEEL UNLESS NOTED OTHERWISE.

19 PARTIAL PLAN - TOP OF WEST CORE

1/8" = 1'-0"

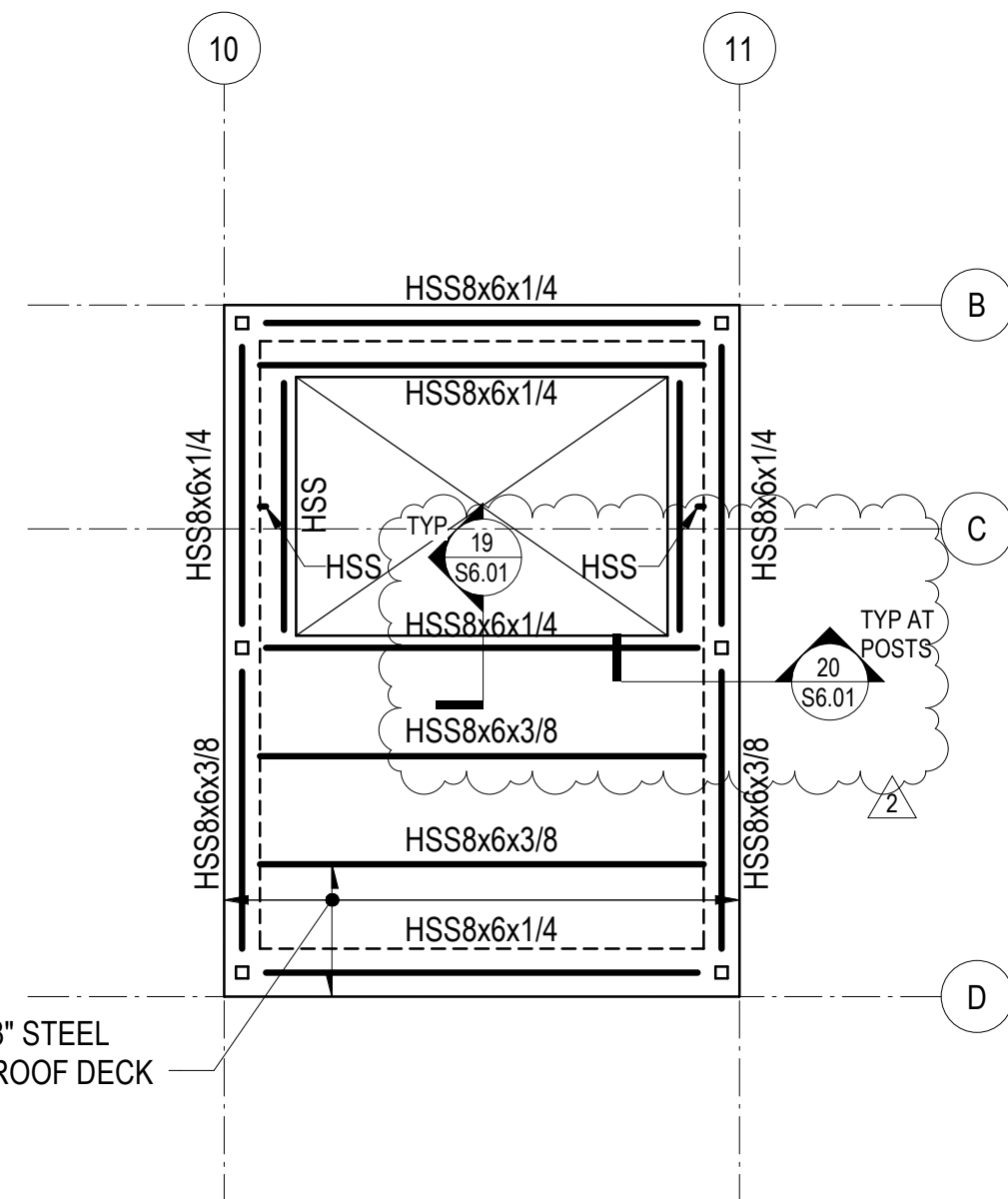


NOTES

- REFERENCE FLOOR ELEVATION IS 8423'-5". REFERENCE TOP OF STRUCTURAL STEEL IS 3-INCHES BELOW THE REFERENCE FLOOR ELEVATION, TYPICAL UNLESS NOTED OTHERWISE.
- ROOF DECK IS MINIMUM 3-INCH x 20 GAUGE STEEL DECKING. DECKING IS TO BE INSTALLED IN MINIMUM THREE SPAN CONDITIONS WHERE POSSIBLE.

10 PARTIAL PLAN - EAST CORE ELEV OVERRUN

1/8" = 1'-0"

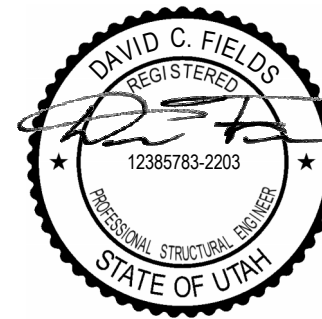


NOTES

- REFERENCE FLOOR ELEVATION IS 8429'-9". REFERENCE TOP OF STRUCTURAL STEEL IS AT THE REFERENCE FLOOR ELEVATION, TYPICAL UNLESS NOTED OTHERWISE.
- ROOF DECK IS MINIMUM 3-INCH x 20 GAUGE STEEL DECKING. TOP OF DECK IS AT TOP OF STEEL UNLESS NOTED OTHERWISE.

20 PARTIAL PLAN - TOP OF EAST CORE

1/8" = 1'-0"



Reserved for permit stamp

150 South Jackson St., Suite 800
Seattle, Washington 98104 USA
+1 206 624 5970 olsonkundig.com

Olson Kundig

project:
SOMMET BLANC - ABC
DEER VALLEY, UTAH

MAGNUSSON KLEMENCIC ASSOCIATES

Structural + Civil Engineers

Seattle Chicago
www.mka.com
206.292.1200

principal architect _____
project manager _____
drawn by _____
checked by _____
job no. 20052
date 05/17/2024

revisions:

2 7/26/2024 ASI/022
04/08/2024 IFC SET 1 OF 3
11/18/2022 95% CD

no. date by

IFC SET 2 OF 3

05/17/2024

TOWER A PARTIAL
PLANS

S2.A.50