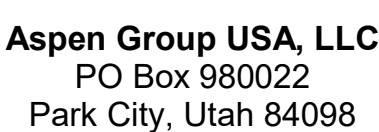


Reserved for permit stamp

159 South Jackson St, Suite 800
Seattle, Washington 98104 USA
+1 206 624 5670 olsonkundig.com

Olson Kunding

project:
SOMMET BLANC
9300 Marsac Ave (B2 East Parcel)



Pool Consultant
Cloward H2O
2696 N University Ave, Suite 290
Provo, UT 84604

Landscape Architect
EPG Design
6949 South High Tech Drive, Suite 10
Midvale, Utah 84047

Specifications Writer
Friday Group
88 Mainelli Road
Middlebury, VT

Code Consultant
Holmes
600 1st Avenue, Suite 200A
Seattle, WA 98104

Fire Protection Engineer
Jensen Hughes
One Research Drive, Suite 305C
Westborough, MA 01581

Vertical Transportation Consultant
Lerch Bates
19515 North Creek Parkway, Suite 300
Bothell, WA 98011

Structural Engineer
Magnusson Klemencic Associates
1301 5th Ave, Suite 3200
Seattle, WA 98101

Lighting Designer
O-
1319 SE MLK Blvd, Suite 210
Portland, Oregon 97219

Building Envelope Consultant
RDH
2101 N 34th St
Seattle, WA 98103

Accessibility Consultant
Studio Pacifica
2144 Westlake Ave N, Suite F
Seattle, WA 98109

MEP Engineer
WSP USA
1001 Fourth Ave., Suite 3100
Seattle, WA 98154

principal architect _____
project manager _____
drawn by _____
checked by Checker
job no. _____
date 5/31/2024

revisions:

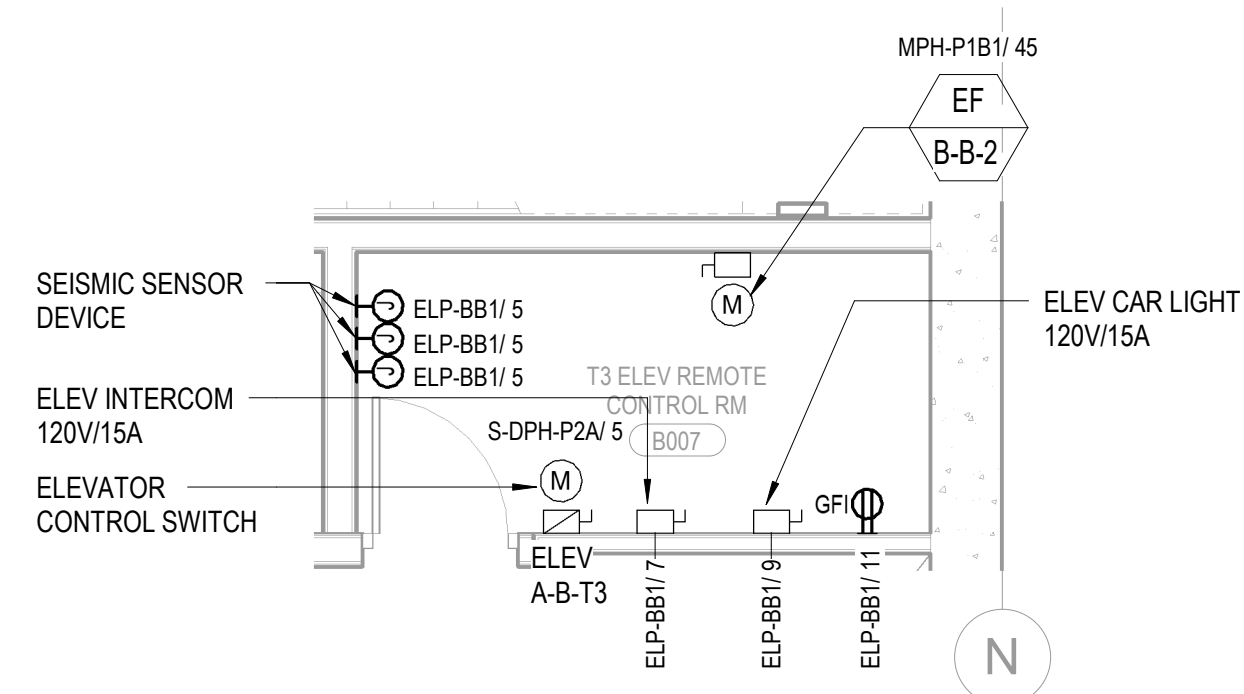
C. 07/26/2024 ASI 2

no.	date	
-----	------	--

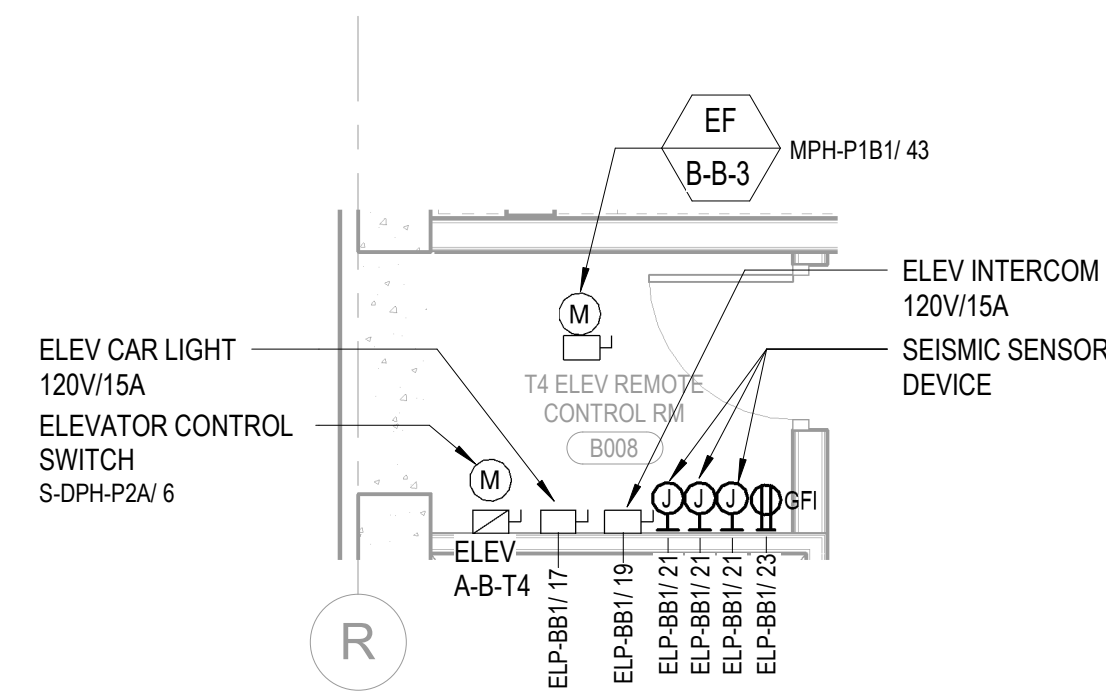
IFC Set 3 of 3
5/31/2024

TOWER B - LVL B
ELECTRICAL POWER
PLAN

E2.2B.01



2 TOWER B - T3 ELEVATOR REMOTE CONTROL ROOM
SCALE: 1/4" = 1'-0"



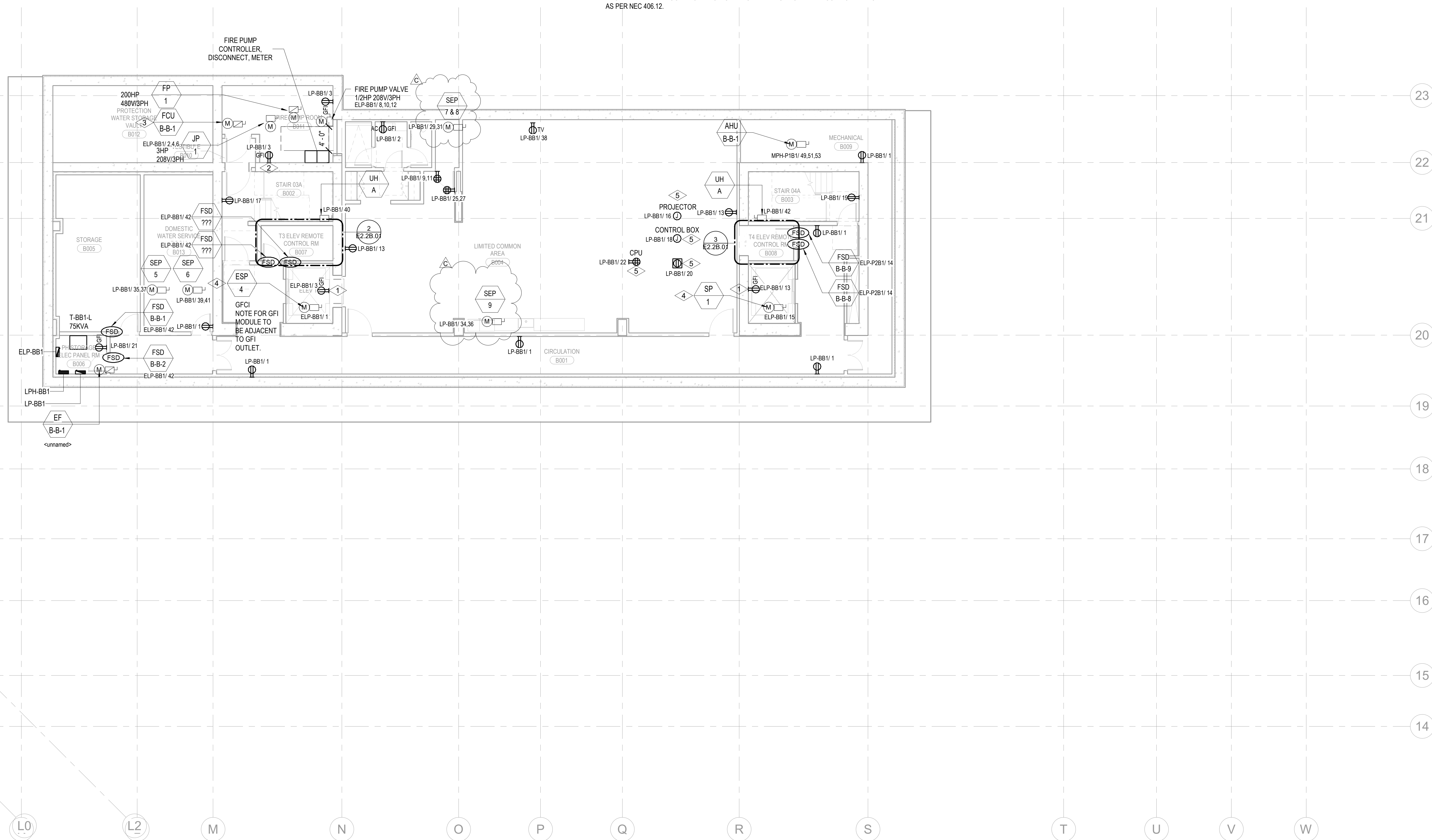
3 TOWER B - T4 ELEVATOR REMOTE CONTROL ROOM
SCALE: 1/4" = 1'-0"

SHEET NOTES:

- A. DRAWINGS ARE INTENDED TO SHOW GENERAL ARRANGEMENT, DESIGN AND EXTENT OF WORK AND ARE DIAGRAMMATIC. DRAWINGS ARE NOT INTENDED TO SHOW EXACT LOCATIONS EXCEPT WHERE DIMENSIONS ARE SHOWN. ELECTRICAL WORK IS SHOWN ON THE BASIS OF STANDARD INDUSTRY SYMBOLS. BEFORE ORDERING MATERIALS OR DOING WORK, VERIFY MEASUREMENTS PERTAINING THERETO AND ASSUME RESPONSIBILITY THEREFOR. ANY SUBSTANTIAL DIFFERENCES BETWEEN DRAWINGS AND CONDITIONS IN THE FIELD SHALL BE SUBMITTED TO THE CONSTRUCTION MANAGER FOR CONSIDERATION BEFORE PROCEEDING WITH THE WORK.
- B. WORK PERFORMED INCLUDES LABOR, MATERIALS, AND EQUIPMENT REQUIRED TO INSTALL A COMPLETE ELECTRICAL SYSTEM AS INDICATED ON THESE DRAWINGS AND AS SPECIFIED REFER TO ELECTRICAL CONNECTION SCHEDULE FOR CONDUIT, WIRING, COPD, DISCONNECTS, AND EQUIPMENT.
- C. VERIFY ELECTRICAL SIZES AND POWER REQUIREMENTS FOR EQUIPMENT PROVIDED BY OTHERS.
- D. ELECTRICAL CONDUITS IN FINISHED SPACES SHALL BE CONCEALED. COORDINATE WITH OTHER TRADES AND USE CHASES AND CEILING SPACES LOCATIONS OF ELECTRICAL JUNCTION BOXES IN FINISHED SPACES SHALL BE APPROVED BY ARCHITECT PRIOR TO ROUGH-IN.
- E. REFER TO MECHANICAL AND PLUMBING PLANS FOR EXACT LOCATION OF HVAC/PLUMBING EQUIPMENT.
- F. PROVIDE CONDUIT, WIRE AND JOCKES FOR CIRCULATING SIZES, QUANTITY AND SIZES OF CONDUIT TO BE DETERMINED BY CONTRACTOR.
- G. CONTRACTOR SHALL BE RESPONSIBLE FOR PROTECTION OF ALL ELECTRICAL CIRCUITS AFFECTED BY CONSTRUCTION. SUCH CIRCUITS WILL BE REPAIRED IMMEDIATELY. THERE WILL BE NO DISRUPTION OF SERVICE OUTSIDE OF CONSTRUCTION ZONE AREA.
- H. PROVIDE PROPER PROTECTABLES IN RESIDENTIAL UNITS AND ALL COMMON AREAS AS PER NEC 406.12.

NUMBERED NOTES:

- | | |
|---|---|
| 1 | DUPLEX RECEPTACLE TO BE INSTALLED IN THE ELEVATOR PIT. COORDINATE EXIST LOCATION WITH ELEVATOR CONTRACTOR. |
| 2 | ELECTRICAL CONTRACTOR TO SUPPLY AND INSTALL 15A/1P 120VAC POWER CONNECTION TO WATER TANK MONITORING PANEL. |
| 3 | COORDINATE EXIST LOCATION WITH FIRE SUPPRESSION CONTRACTOR. |
| 4 | FAN COIL INDOOR UNIT DENOTED IS PART OF A SPLIT SYSTEM AND IS TO BE POWERED BY THE OUTDOOR UNIT. ELECTRICAL CONTRACTOR IS TO SUPPLY AND INSTALL THE WIRING AND CONNECTIONS BETWEEN THE OUTDOOR UNIT AND THE INDOOR UNIT AS PART OF THIS SCOPE OF WORK. SEE ELECTRICAL CONNECTION SCHEDULE FOR ADDITIONAL REQUIREMENT. |
| 5 | PROVIDE GFI PROTECTION TO PUMP PUMP CIRCUIT PER NEC. PROTECTION MAY BE INTEGRAL TO CIRCUIT BREAKER, OR MAY BE MODULE MOUNTED ADJACENT TO PIT RECEPTACLE. |
| 6 | COORDINATE EXIST LOCATION WITH GOLF SIMULATOR INSTALLER PRIOR TO CONSTRUCTION. |



1 TOWER B - LEVEL B1 ELECTRICAL POWER
SCALE: 1/8" = 1'-0"

