

SOMMET BLANC

Location: 9300 Marsac Avenue (B2 East Parcel), Park City, Utah
Project Number: 20052

EQ-04.02

IFC Issuance: 07/19/2024

Product Info

Manufacturer: Zephyr
Style/Series: 48" Monsoon II Insert
Description:
Range Hood

Sales Rep

Primary
Shay Devenport
Email: Shay@mld.com
Office Phone: 801-415-1610

Attributes

Location : Units - Kitchen
Product : AK9346BS
Dimension: 48" (46-3/8" W x 22-1/2" D)
Finish: Custom Surround in Metal To Match MTL-01

Notes

Scope - MLD



• Provide Manufacturer's warranty information
• Provide manufacturer's assembly instructions including a list of parts included in all shipments.
• Olson Kundig owns all copyrights to the design of custom products. Photography of product is prohibited without the expressed written consent by Olson Kundig.
• All drawings provided are for reference only, and not for construction

PRO

MONSOON II

INSERT

ACT™

Now available with LumiLight LED lighting and our exclusive ACT™ technology, Monsoon II delivers and then more. Designed using universal-ly-recognized, conventional installation dimensions, Monsoon II is a great option for custom cabinetry or

enclosure. Its stainless steel baffle filters with removable grease tray make it easy to maintain its pro-style look while the 6-speed electronic controls and wireless remote control give the homeowner more than they expected.

ZEPHYR

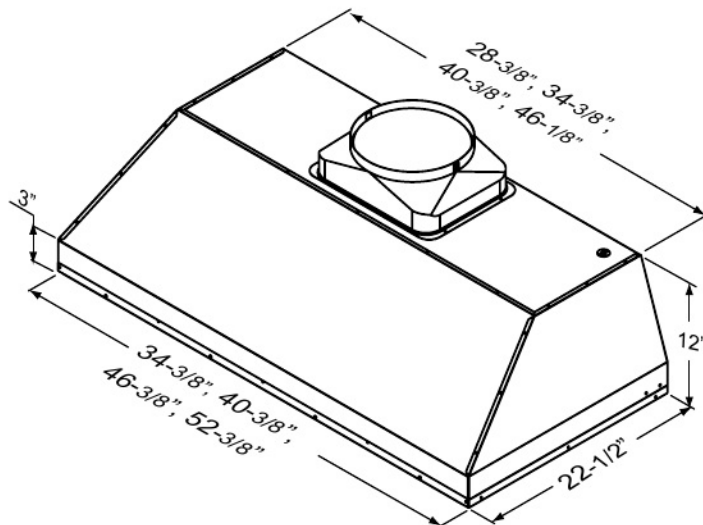
ZEPHYRONLINE.COM

	INTERNAL BLOWER STANDARD	INTERNAL BLOWER with ACT™ AIRFLOW CONTROL TECHNOLOGY™*	
Min. - Max. CFM	450 - 1,200	350 - 590	350 - 390
Min. - Max. Sones	3.5 - 9	3.3 - 6	3.3 - 4

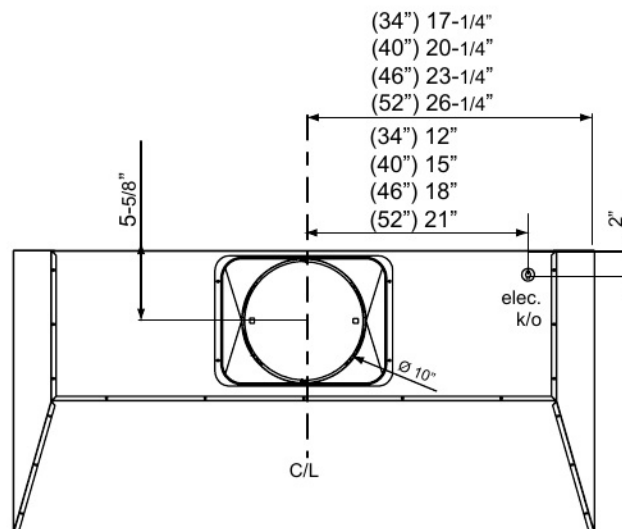
*AIRFLOW CONTROL TECHNOLOGY™ (ACT™) is an exclusive feature built into specific Zephyr hoods which can limit the maximum blower CFM to meet local code requirements.



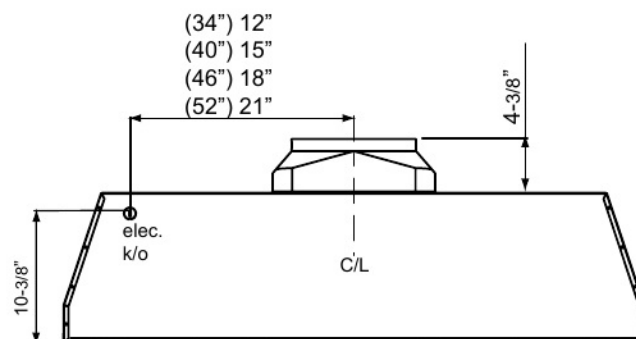
Includes Wireless Remote Control



3/4 VIEW



TOP



BACK

MODEL				
Stainless Steel	AK9334BS	AK9340BS	AK9346BS	AK9352BS
Size	36" (34-3/8" x 22-1/2")	42" (40-3/8" x 22-1/2")	48" (46-3/8" x 22-1/2")	54" (52-3/8" x 22-1/2")
BLOWER PERFORMANCE				
Blower CFM (Min. - Max.)	450 - 1,200	450 - 1,200	450 - 1,200	450 - 1,200
Sones (Min. - Max.)	3.5 - 9	3.5 - 9	3.5 - 9	3.5 - 9
ACT 590 CFM (Min. - Max.)	350 - 590	350 - 590	350 - 590	350 - 590
ACT 590 Sones (Min. - Max.)	3.3 - 6	3.3 - 6	3.3 - 6	3.3 - 6
ACT 390 CFM (Min. - Max.)	350 - 390	350 - 390	350 - 390	350 - 390
ACT 390 Sones (Min. - Max.)	3.3 - 4	3.3 - 4	3.3 - 4	3.3 - 4
FEATURES				
ACT™ Technology	Yes	Yes	Yes	Yes
Controls	Electronic Touch	Electronic Touch	Electronic Touch	Electronic Touch
Speed Levels	6*	6*	6*	6*
Auto Delay-Off	Yes	Yes	Yes	Yes
CleanAir Function	Yes	Yes	Yes	Yes
Lighting	LumiLight LED, 6W x4	LumiLight LED, 6W x4	LumiLight LED, 6W x4	LumiLight LED, 6W x4
Dual-Level Lighting	Yes	Yes	Yes	Yes
Filters	Pro Baffle x2	Pro Baffle x2	Pro Baffle x3	Pro Baffle x3
Grease Collection Tray	Yes	Yes	Yes	Yes
Wireless Remote Control	Yes	Yes	Yes	Yes
Recirculating Option	No	No	No	No
ADA Compliant	Yes	Yes	Yes	Yes
DUCT SPECIFICATIONS				
Vertical Internal Blower	10" Round	10" Round	10" Round	10" Round
Horizontal Internal Blower	NA	NA	NA	NA
AC POWER	120V, 60Hz at Max. 7A	120V, 60Hz at Max. 7A	120V, 60Hz at Max. 7A	120V, 60Hz at Max. 7A
OPTIONAL ACCESSORIES				
Make-Up Air Kit	MUA010A	MUA010A	MUA010A	MUA010A
MOUNTING HEIGHT RANGE**				
	26" - 36"	26" - 36"	26" - 36"	26" - 36"
WARRANTY				
	3 years parts, 1 year labor	3 years parts, 1 year labor	3 years parts, 1 year labor	3 years parts, 1 year labor

*When ACT™ is enabled the maximum speed levels will change. ACT 590 CFM = 3 speeds and ACT 390 CFM = 2 speeds.

**Mounting height refers to distance between top of a 36" tall cooking surface and bottom of hood.

ACT™ AIRFLOW CONTROL TECHNOLOGY™ (ACT™) is an exclusive feature built into specific Zephyr hoods which can limit the maximum blower CFM to meet local code requirements.

Specifications subject to change, check zephyronline.com for up-to-date information.
Zephyr Ventilation | 2277 Harbor Bay Parkway, Alameda, CA 94502 | 888.880.VENT

OCT20.0201

