

SOMMET BLANC

Location: 9300 Marsac Avenue (B2 East Parcel), Park City, Utah  
Project Number: 20052

GL-02

IFC Issuance: 07/19/2024

Product Info

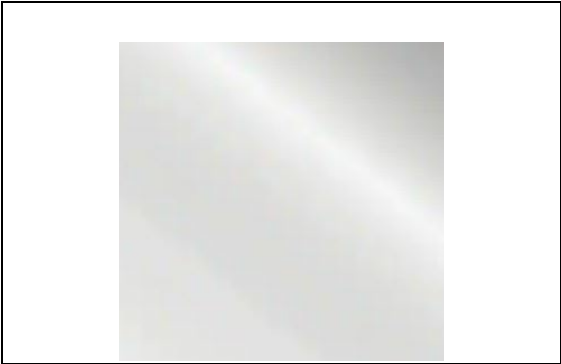
Manufacturer: By G.C.  
Style/Series: Clear Tempered Mirror - No Bevel  
Description:  
Clear Tempered Mirror - No Bevel

Attributes

Location : Typical Throughout  
Dimensions: 1/4" Thick, per drawings  
Low-iron: Yes  
Tempered: Yes  
Finish: Polished Edges

Approvals

- Finish Sample
- Seaming Diagram



• Provide Manufacturer's warranty information  
• Provide manufacturer's assembly instructions including a list of parts included in all shipments.  
• Olson Kundig owns all copyrights to the design of custom products. Photography of product is prohibited without the expressed written consent by Olson Kundig.  
• All drawings provided are for reference only, and not for construction

Seattle, Washington