

SOMMET BLANC

Location: 9300 Marsac Avenue (B2 East Parcel), Park City, Utah
Project Number: 20052

MTL-04

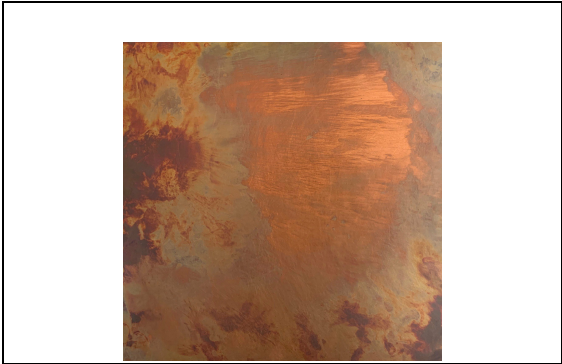
IFC Issuance: 07/19/2024

Product Info

Manufacturer: By G.C.
Style/Series: Patina Copper
Description:
Metal Panels

Attributes

Location : Bowling Bar Countertop
Type: Copper
Dimension/Panel Size : Refer to drawings
Gauge/Thickness : By G.C. 16 Gauge min. unless otherwise noted.
Finish/Color : To match architect's sample
Treatment/Coating: Sealed to prevent corrosion



Notes

Contractor to submit samples. Provide multiple samples to have an aesthetic range & quality to be approved by OK. OK to review panel layouts for flame throw orientation/ book matching prior to final fabrication.

• Provide Manufacturer's warranty information
• Provide manufacturer's assembly instructions including a list pf parts included in all shipments.
• Olson Kundig owns all copyrights to the design of custom products. Photography of product is prohibited without the expressed written consent by Olson Kundig.
• All drawings provided are for reference only, and not for construction

SOMMET BLANC

Location: 9300 Marsac Avenue (B2 East Parcel), Park City, Utah
Project Number: 20052

MTL-04

IFC Issuance: 07/19/2024

GENERAL NOTES

OK reserves the right to review and reject unsatisfactory panels that do not meet aesthetic intent.

• Provide Manufacturer's warranty information
• Provide manufacturer's assembly instructions including a list pf parts included in all shipments.
• Olson Kundig owns all copyrights to the design of custom products. Photography of product is prohibited without the expressed written consent by Olson Kundig.
• All drawings provided are for reference only, and not for construction

Seattle, Washington