

SOMMET BLANC

Location: 9300 Marsac Avenue (B2 East Parcel), Park City, Utah  
Project Number: 20052

PL-04.02

IFC Issuance: 07/19/2024

Product Info

Manufacturer: Dornbracht Bath & Kitchen  
Style/Series: Tara Freestanding Tub Filler with Handshower

Sales Rep

Primary  
Shea Jackson  
Email: shea.j@earthelements.com  
Office Phone: 323.422.7091

Attributes

Location : Units - Primary Bath  
Product : 25 943 819  
Dimensions: 36-1/4" H x 24-3/4" Riser Height x 5-7/8"  
Center to Center; 8-5/8" Projection  
PALETTE | FINISH OPTION  
Air : Platinum Matte 06  
Earth: Dark Platinum Matte 99



• Provide Manufacturer's warranty information  
• Provide manufacturer's assembly instructions including a list of parts included in all shipments.  
• Olson Kundig owns all copyrights to the design of custom products. Photography of product is prohibited without the expressed written consent by Olson Kundig.  
• All drawings provided are for reference only, and not for construction

Seattle, Washington



## Bathtub - Tara.

Two-hole tub mixer for freestanding installation with hand shower set - platinum matte

Article number: 25 943 882-06



- 8-5/8" Projection
- Swiveling spout 180°
- Spout: Round aerated stream
- Hand shower: Standard spray
- Hand shower with descaling system
- Tub / shower diverter
- Total height 36-1/4"
- Riser height 24-3/4"
- Height to aerator/spout outlet 30-1/8"
- Flanges Ø 3-1/2"
- Center to center 5-7/8"
- Metal shower hose 49-1/4" with anti-twist device
- Hand shower to be mounted on right pillar
- Water flow rate limited to max. 5.8 gpm
- Hand shower water flow rate limited to max. 1.8 gpm
- Fittings group in compliance with DIN 4109: 1
- Internal backflow preventer.



platinum matte

Accessory is required for this item.

Discontinued items available to order until 31.12.9999

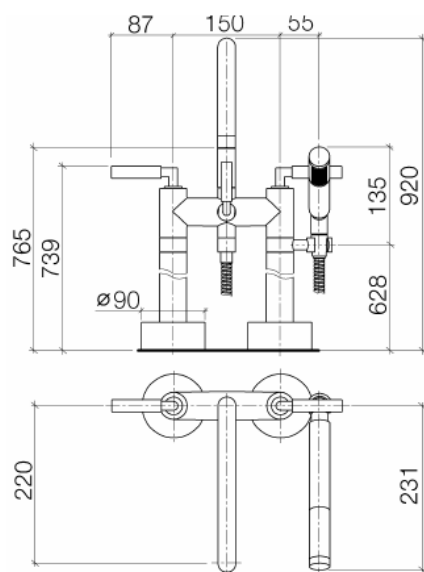


## Bathtub - Tara.

Two-hole tub mixer for freestanding installation with hand shower set - platinum matte

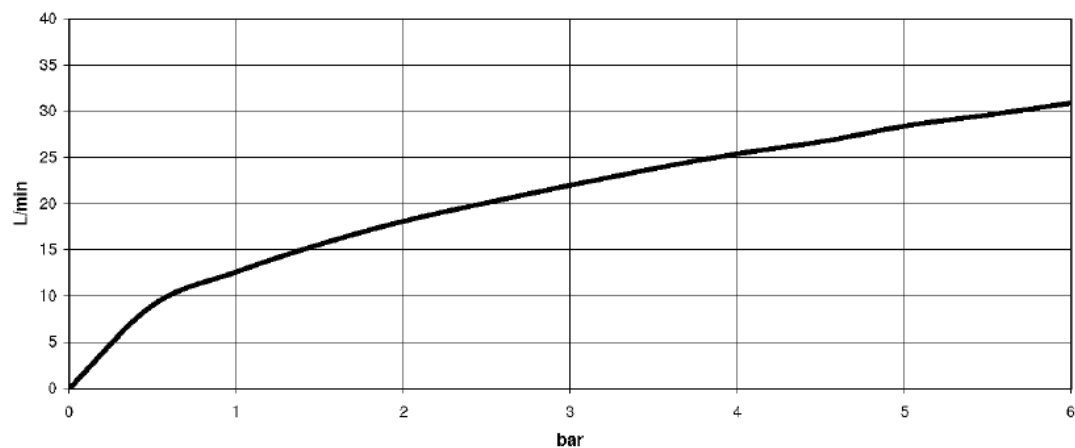
Article number: 25 943 882-06

## Dimensional drawing



All dimensions in mm / inch = mm x 0,0394

## Flow rate chart



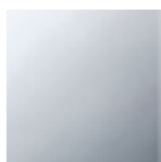


## Bathtub - Tara.

Two-hole tub mixer for freestanding installation with hand shower set - platinum matte

Article number: 25 943 882-06

### Other surface finishes



polished chrome

25 943 882-00



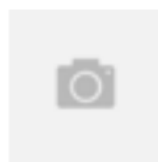
platinum

25 943 882-08



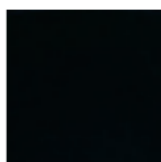
white matte

25 943 882-10



Brushed Durabronze

25 943 882-28



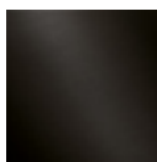
black matte

25 943 882-33



chrome matte

25 943 882-93



Dark Platinum matte

25 943 882-99

More custom finish options are available via special production (xTra Service). Please see our finish matrix for availability and pricing or contact a Dornbracht representative.

NO IMAGE



AVAILABLE

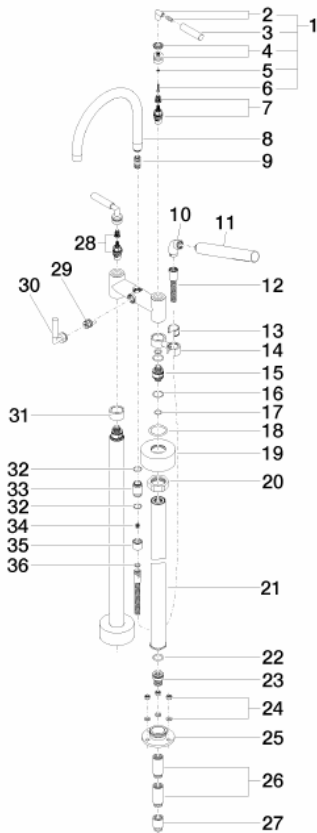
Spare parts list

Model/program/technical modifications and error excepted  
For more information see: [www.dornbracht.com](http://www.dornbracht.com) + 49 (0) 2371 88999 950 [mail@dornbracht.com](mailto:mail@dornbracht.com)

3/4 3/8/2022



Bathtub - Tara.  
Two-hole tub mixer for freestanding installation with hand shower set - platinum matte  
Article number: 25 943 882-06



Number	Item Number	Designation	Number of units
1	04 20 88 052 00-06	handle	2
2	04 18 20 022 00-06	angle	2
3	09 20 88 052-06	handle	2
4	90 12 12 007 00-06	base	2
5	09 30 11 029 90	disc	2
6	09 30 30 075 90	screw	2
7	90 90 03 130 00 90	top	1
8	90 28 22 222 00-06	spout	1
9	90 21 10 011 00 90	diverter	1
10	04 24 04 189 00-06	nipple	1
11	28 013 979-06 0010	Baton hand shower 6.8 l/min - platinum matte	1
12	90 30 02 072 00-06	hose	1
13	09 18 40 035 90	sleeve	1
14	04 28 10 029 01-06	holder	1
15	09 29 05 021 20 90	nipple	2
16	09 14 10 112 90	seal	4
17	09 14 10 055 90	seal	4
18	09 14 10 041 90	seal	2
19	09 27 89 025-06	rosette	2
20	09 23 30 040-07	nut	2
21	04 28 22 009 20-06	connection	2
22	09 14 10 081 90	seal	2
23	09 24 03 094-07	nipple	2
24	04 23 10 023 00 90	fixing set	6
25	09 30 11 130-07	connection	2
26	09 24 03 081 10 90	extension	4
27	09 24 03 080 90	extension	2
28	90 90 03 131 00 90	top	1

28	09 00 00 101 00 90	top	1
29	90 15 01 005 00 90	insert	1
30	90 18 20 025 00-06	diverter	1
31	09 28 10 028-06	sleeve	1
32	09 14 10 032 90	seal	1
33	09 24 03 121-06	nipple	1
34	09 23 01 131 90	back-flow preventer	1
35	09 21 02 143-06	sleeve	1
36	09 14 20 026 90	seal	1