

SOMMET BLANC

Location: 9300 Marsac Avenue (B2 East Parcel), Park City, Utah
Project Number: 20052

ST-15

IFC Issuance: 07/19/2024

Product Info

Manufacturer: ABC Stone Worldwide
Style/Series: Ceppo De Gre Stone
Description:
Countertops, Bar top

Sales Rep

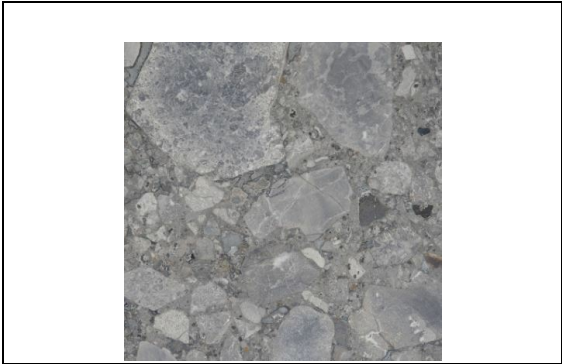
Primary
Kristi Karu A+D Sales
Email: Kristi@abcworldwidestone.com
Office Phone: 646 707 3065

Attributes

Location : Apres Ski Bar, Bowling Back Bar
Type/Species: Limestone
Slab Dimension: 80"x40" - 120" x 70"
Finish: Honed
Thickness: 2cm
Sealant: Dry treat sealant or Equivalent
Slab/Block Review: Required by designer
Edge Profile: Mitred (refer to drawings) 1/8" Ease

Approvals

- Finish Sample
- Seaming Diagram



• Provide Manufacturer's warranty information
• Provide manufacturer's assembly instructions including a list of parts included in all shipments.
• Olson Kundig owns all copyrights to the design of custom products. Photography of product is prohibited without the expressed written consent by Olson Kundig.
• All drawings provided are for reference only, and not for construction