

SOMMET BLANC

Location: 9300 Marsac Avenue (B2 East Parcel), Park City, Utah
Project Number: 20052

TL-12

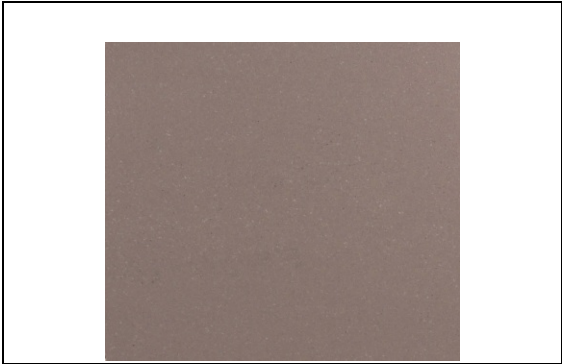
IFC Issuance: 07/19/2024

Product Info

Manufacturer: Mosa - Terra Tones
Style/Series: Porcelain Tile

Attributes

Location : Fitness, Fitness Locker Rooms
Location: Unit Primary Bathroom Steam Shower Floor
Type:
Type: Porcelain Tile
Product Code: TBD
Product Code: 204XYZV6060
Dimensions: 4" x 4"
Dimensions: 4" x 4", cut to size
Thickness: TBD
Thickness: 0.47"
Color/Finish: TBD
Color/Finish: Mid Warm Grey (204) / RL Relief
Grout: TBD
Grout: TBD
Edge Detail :
Layout: Stacked
Layout: Stacked
Installation:



• Provide Manufacturer's warranty information
• Provide manufacturer's assembly instructions including a list pf parts included in all shipments.
• Olson Kundig owns all copyrights to the design of custom products. Photography of product is prohibited without the expressed written consent by Olson Kundig.
• All drawings provided are for reference only, and not for construction

Seattle, Washington