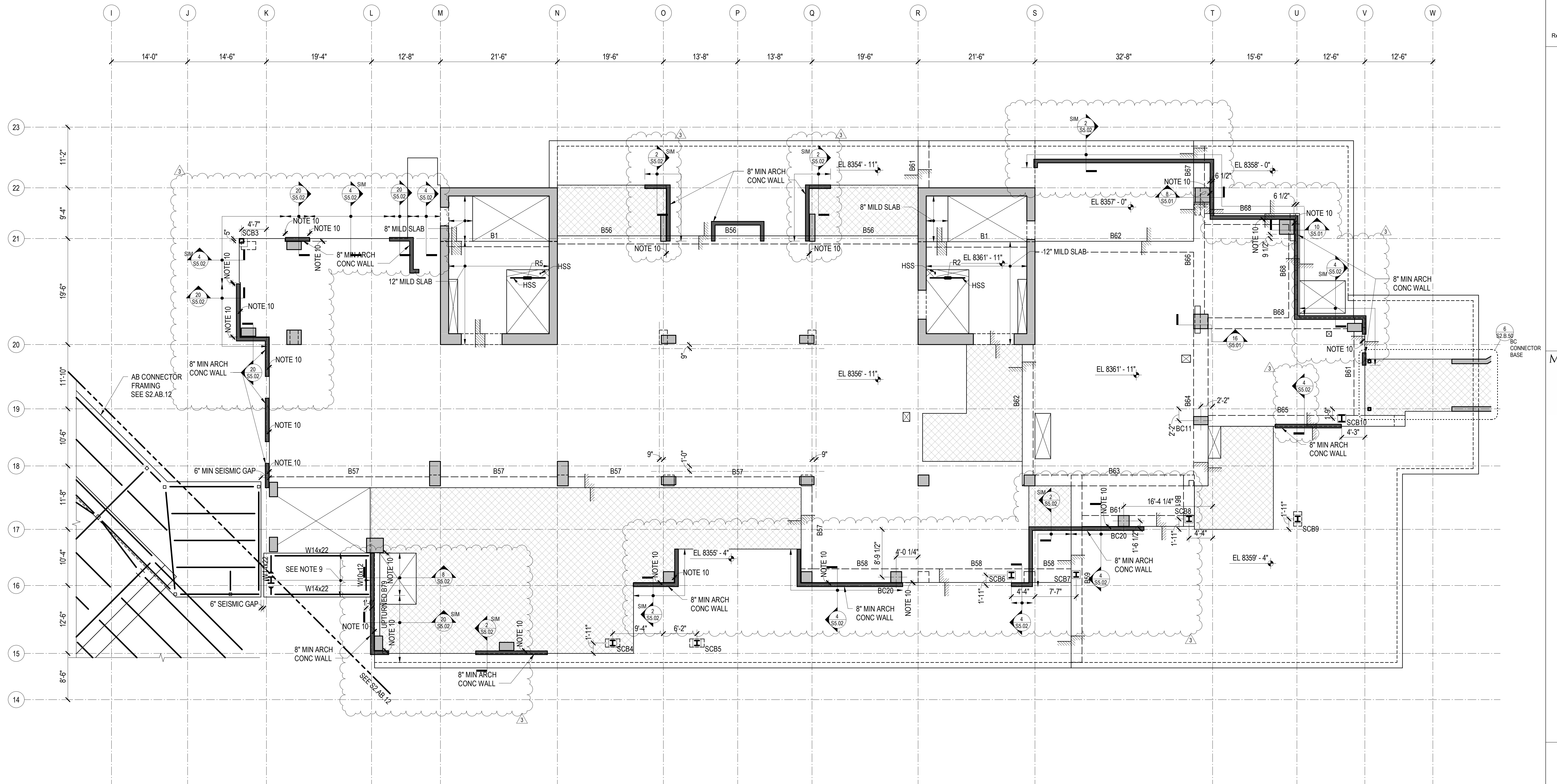


SOMMET BLANC - ABC
DEER VALLEY, UTAH

92 1200

S2.B.11


$$\frac{1}{8}'' = 1'-0''$$

| | |
|-------|--|
| S0.XX | DRAWING INDEX, ABBREVIATIONS, LEGENDS, GENERAL NOTES |
| S1.XX | LOAD DIAGRAMS |
| S2.XX | PLANS |
| S3.XX | ELEVATIONS |
| S4.XX | TYPICAL DETAILS AND SCHEDULES |
| S5.XX | CONCRETE SECTIONS AND DETAILS |
| S6.XX | STEEL SECTIONS AND DETAILS |

1. REFERENCE FLOOR ELEVATION IS 8357' - 0". TOP OF STRUCTURAL CONCRETE SLAB IS 8356' - 11" UNLESS NOTED OTHERWISE. SEE ARCHITECTURAL DRAWINGS FOR DRAINAGE SLOPES NOT SHOWN.
2. THE STRUCTURAL SLAB IS A 14-INCH THICK MILD TWO-WAY SLAB UNLESS NOTED OTHERWISE. SEE THE TYPICAL MILD SLAB DETAILS.
3. CONCRETE PLACED IN THE SLAB/SHEAR WALL INTERSECTION, INCLUDING COUPLING BEAMS, SHALL HAVE MINIMUM CONCRETE STRENGTH EQUAL TO THAT SPECIFIED FOR THE SHEAR WALLS.
4. CONCRETE PLACED IN THE SLAB/COLUMN INTERSECTION SHALL HAVE MINIMUM CONCRETE STRENGTH AS SHOWN IN THE GENERAL NOTES, BUT NO LESS THAN THAT SPECIFIED FOR THE COLUMNS DIVIDED BY 1.4.
5. COORDINATE LOCATION OF ALL EMBEDS WITH MECHANICAL, ELECTRICAL, PLUMBING, AND EXTERIOR WALL SYSTEMS PRIOR TO CASTING THE SLAB.
6. SEE ARCHITECTURAL, MECHANICAL, PLUMBING, ELECTRICAL, AND OTHER DISCIPLINES FOR COORDINATE LOCATION OF ITEMS NOT SHOWN ON PLAN. SEE "TYPICAL OPENINGS AND EMBEDMENTS IN CONCRETE" DETAILS FOR OPENING PLACEMENT CRITERIA. NOTIFY THE STRUCTURAL ENGINEER OF ANY OPENINGS NOT SHOWN ON THE STRUCTURAL DRAWINGS FOR WHICH THE TYPICAL DETAILS DO NOT APPLY.

-

