

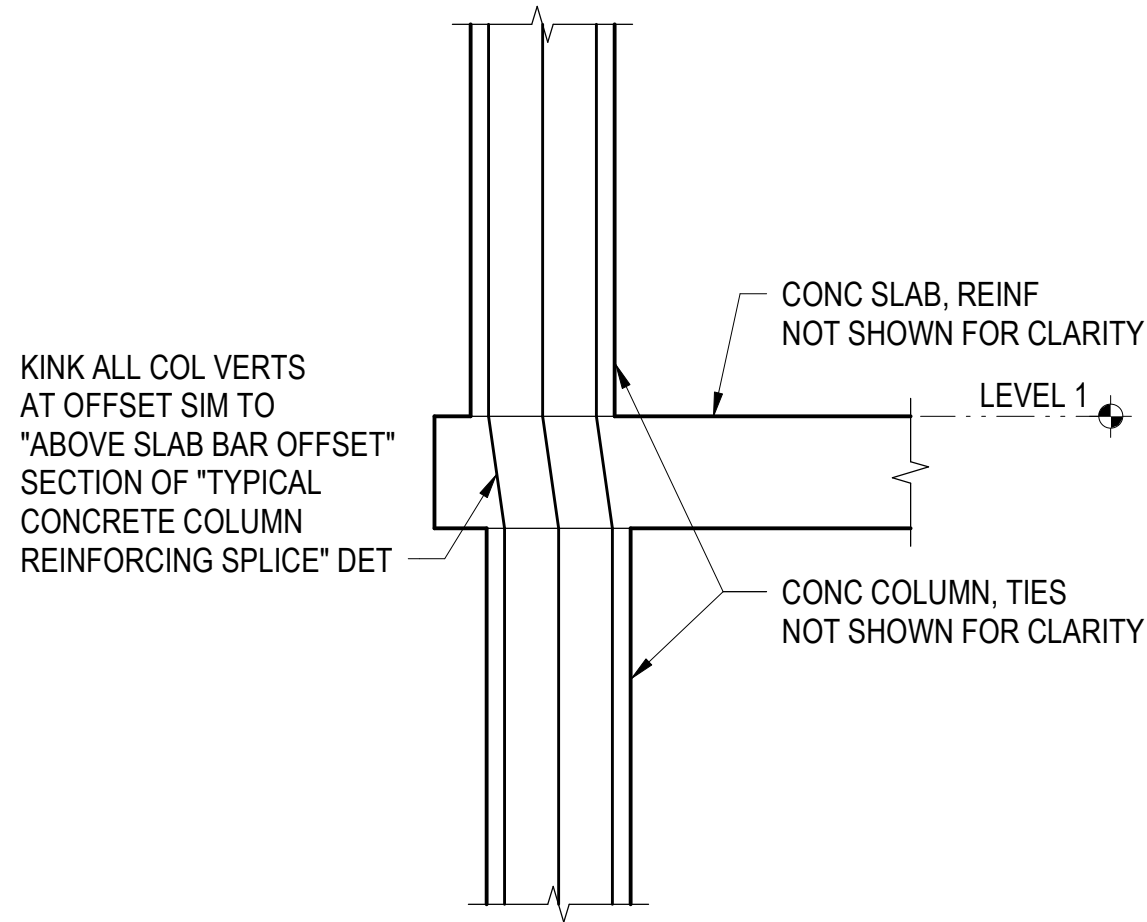
Reserved for permit stamp

150 South Jackson St., Suite 800
Seattle, Washington 98104 USA
+1 206 624 9707 olsonkundig.com

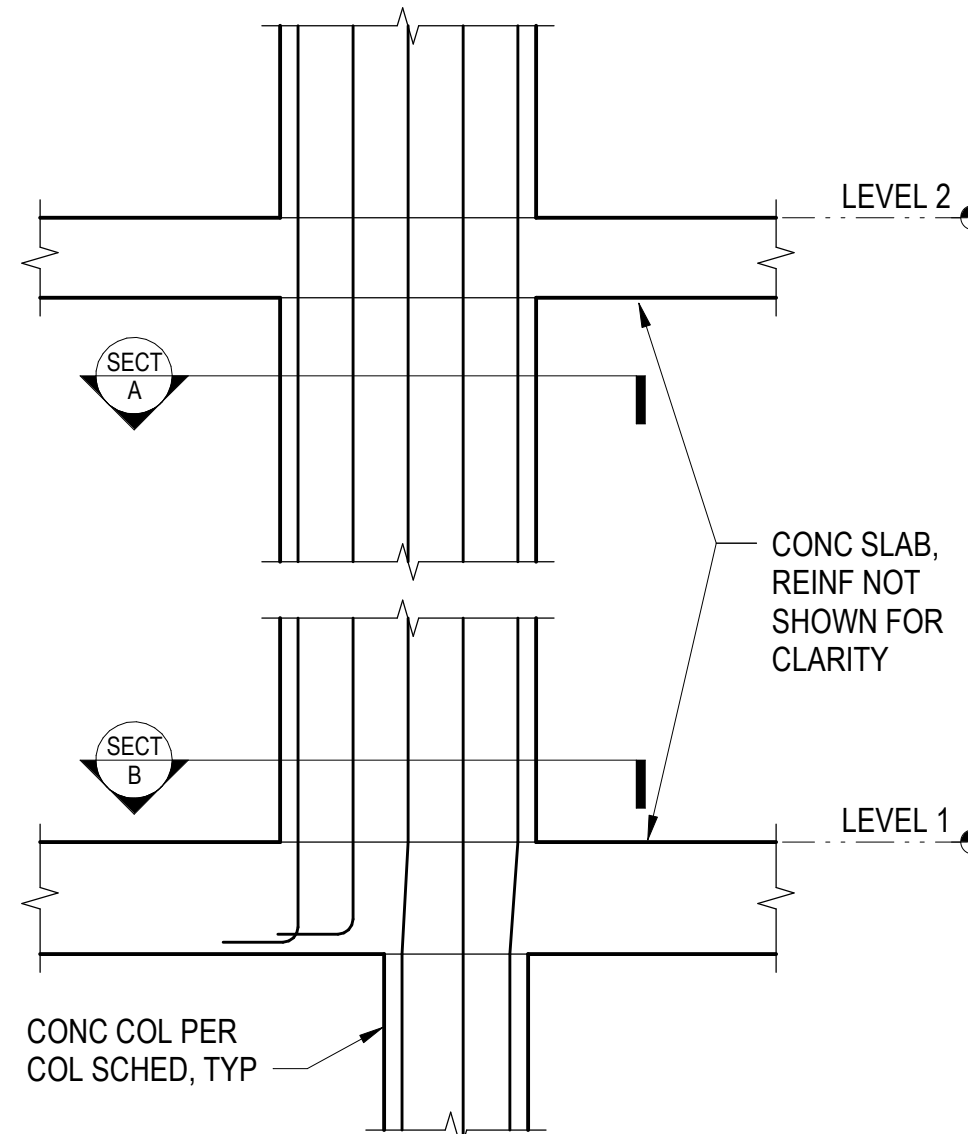
Olson Kundig

project:
SOMMET BLANC - ABC
DEER VALLEY, UTAH

MAGNUSSON KLEMENCIC ASSOCIATES
Structural + Civil Engineers
Seattle Chicago
www.mka.com
206.292.1200



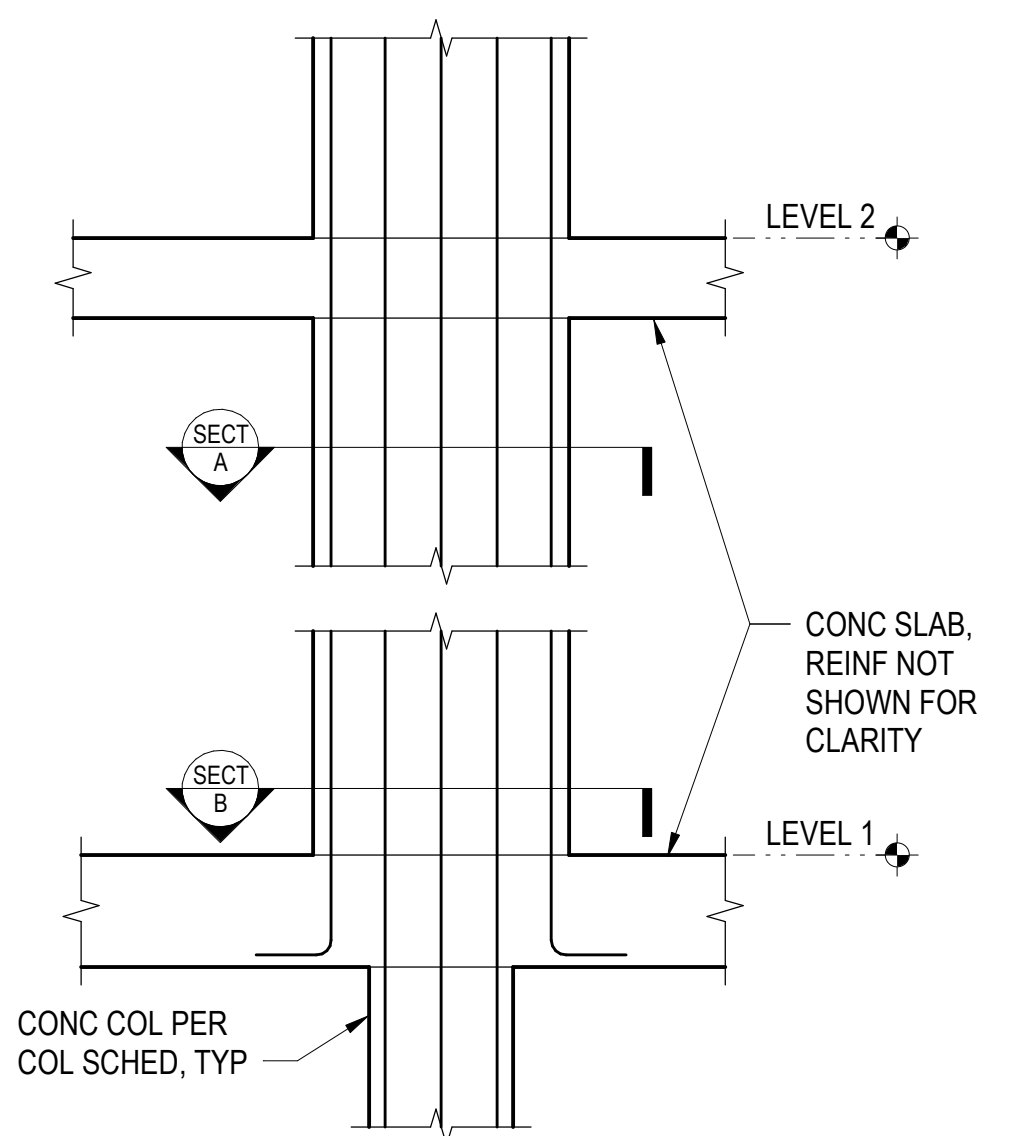
1 SECTION
1/2" = 1'-0"



NOTES:

1. COLUMN TIES NOT SHOWN FOR CLARITY. SEE COLUMN SCHEDULE FOR TIE REQUIREMENTS.

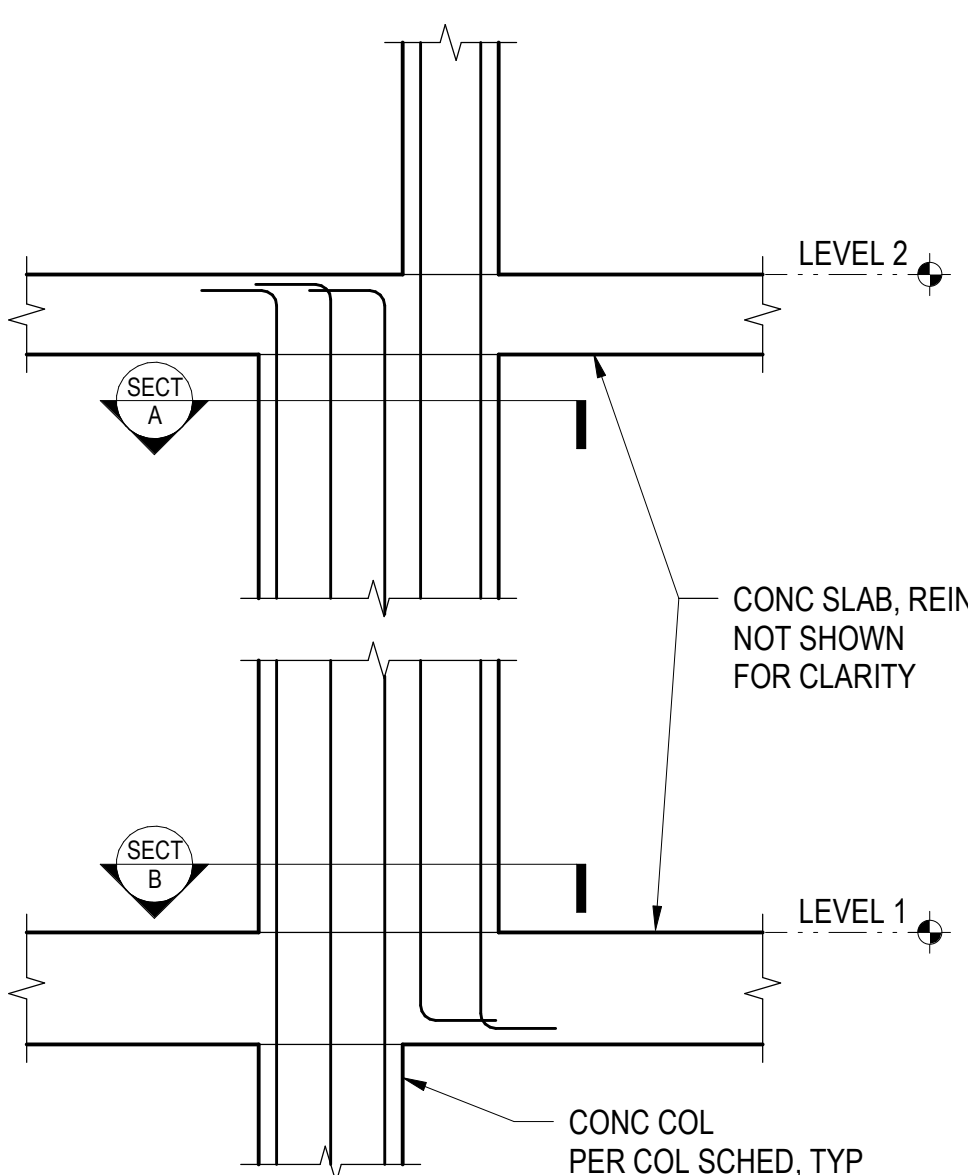
6 SECTION
1/2" = 1'-0"



NOTES:

1. COLUMN TIES NOT SHOWN FOR CLARITY. SEE COLUMN SCHEDULE FOR TIE REQUIREMENTS.

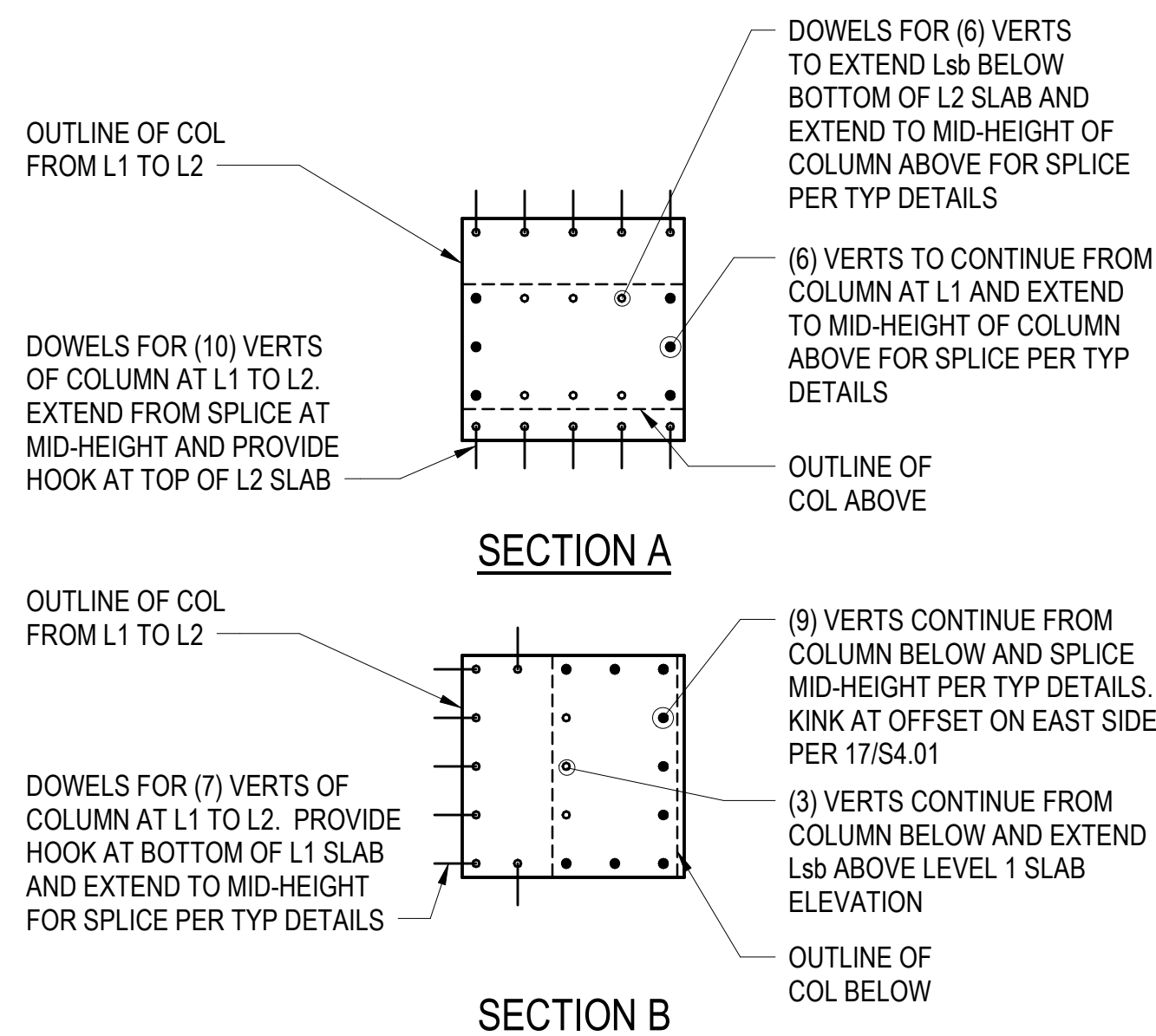
11 SECTION
1/2" = 1'-0"



NOTES:

1. COLUMN TIES NOT SHOWN FOR CLARITY. SEE COLUMN SCHEDULE FOR TIE REQUIREMENTS.

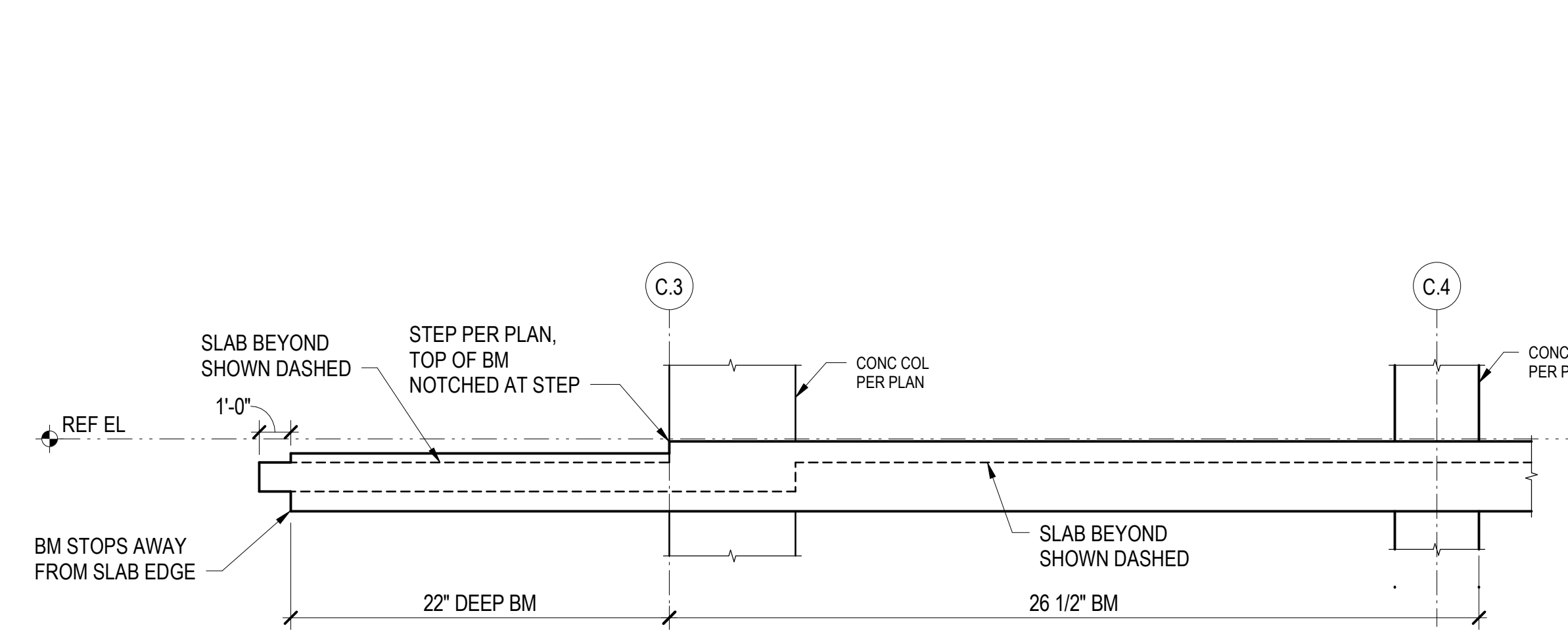
16 SECTION
1/2" = 1'-0"



NOTES:

1. PT NOT SHOWN FOR CLARITY. SLAB REINF NOT SHOWN FOR CLARITY.

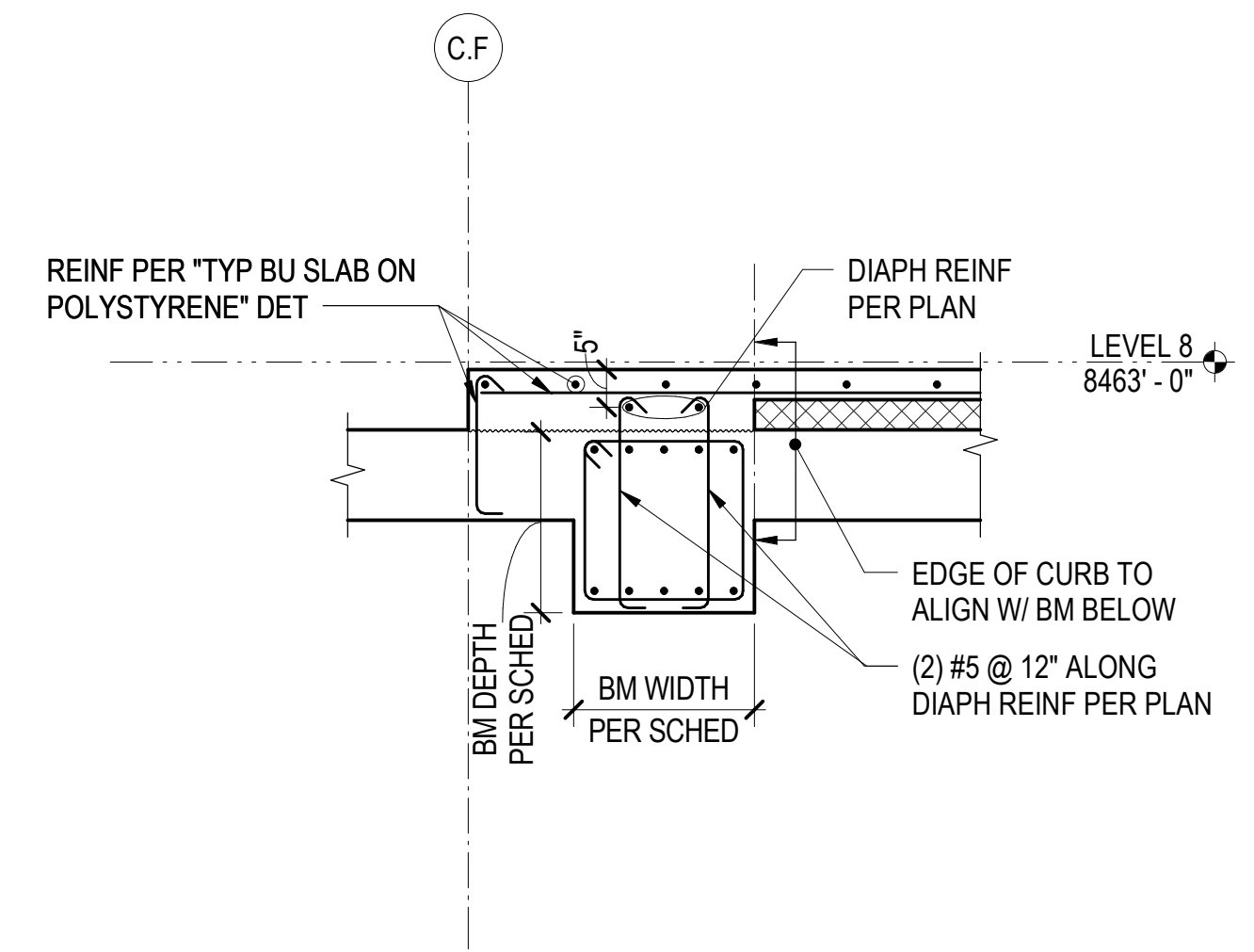
3 SECTION
1/4" = 1'-0"



NOTES:

1. PT NOT SHOWN FOR CLARITY. SLAB REINF NOT SHOWN FOR CLARITY.

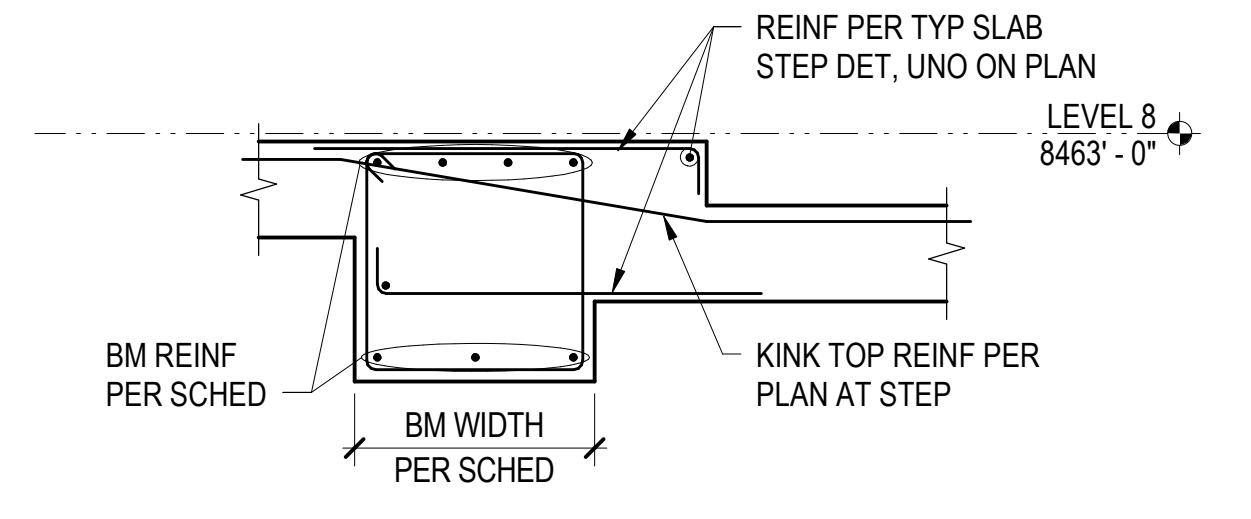
8 SECTION
1/4" = 1'-0"



NOTES:

1. PT TENDONS NOT SHOWN FOR CLARITY.

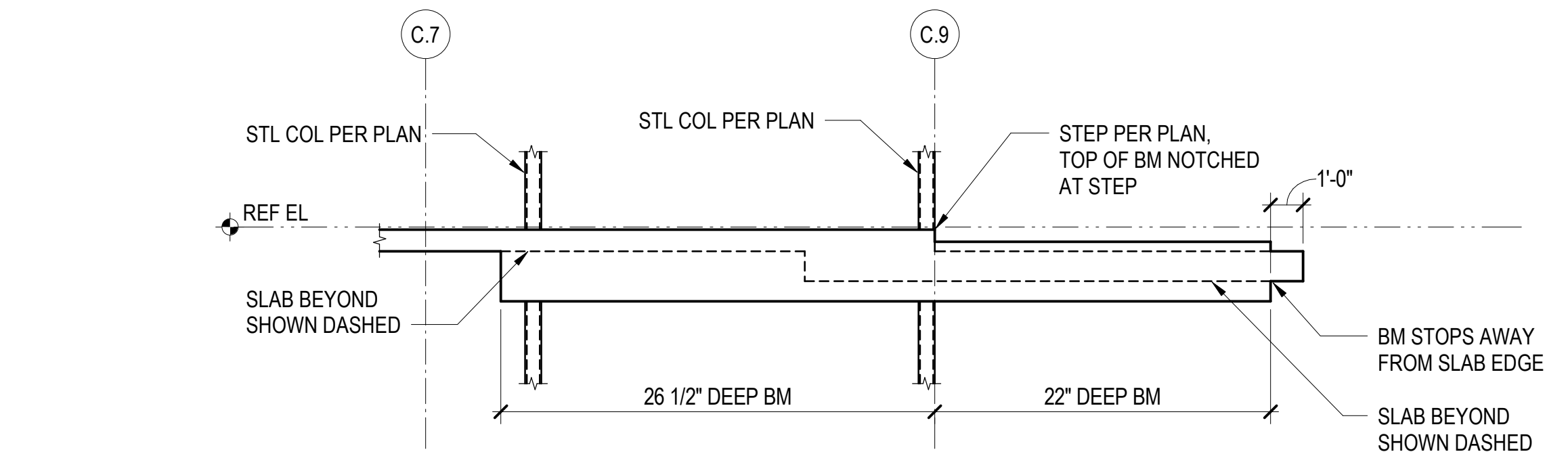
10 SECTION
1/2" = 1'-0"



NOTES:

1. PT NOT SHOWN FOR CLARITY. SLAB REINF NOT SHOWN FOR CLARITY.

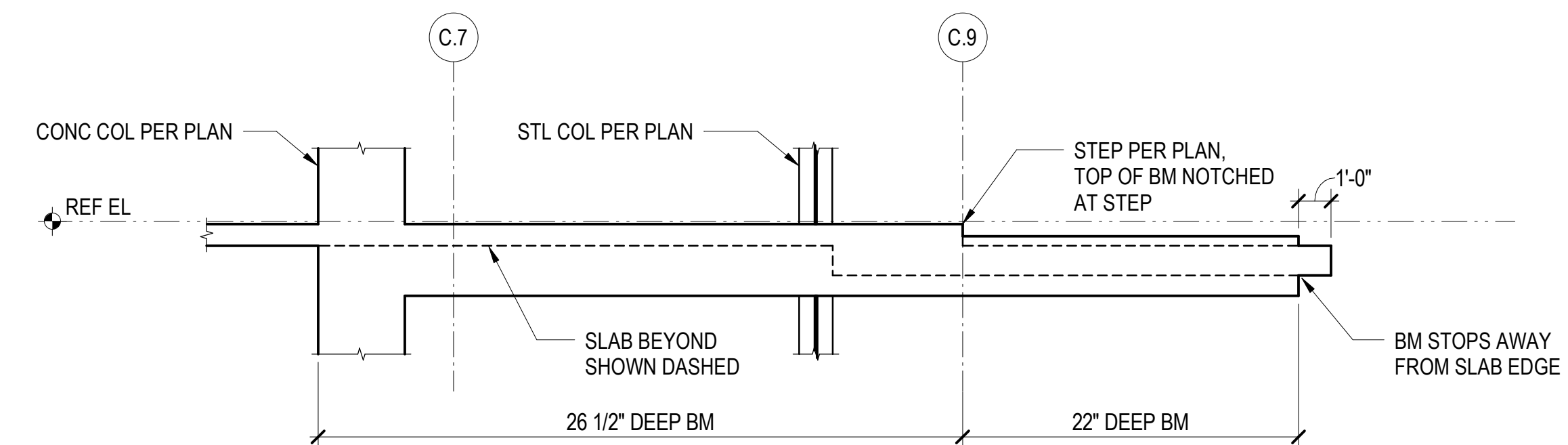
14 SECTION
1/4" = 1'-0"



NOTES:

1. PT NOT SHOWN FOR CLARITY. SLAB REINF NOT SHOWN FOR CLARITY.

19 SECTION
1/4" = 1'-0"



principal architect _____
project manager _____
drawn by _____
checked by _____
job no. 20052
date 05/17/2024

revisions:

04/08/2024 IFC SET 1 OF 3
11/18/2022 95% CD
no. date by

IFC SET 2 OF 3

05/17/2024

TOWER C
CONCRETE
SECTIONS AND
DETAILS

S5.06