

159 South Jackson St, Suite 600  
Seattle, Washington 98104 USA  
+1 206 624 5670 [olsonkundig.com](mailto:olsonkundig.com)

Olson Kundig

SOMMET BLANC  
9300 MARSAC AVE



**Aspen Group USA, LLC**  
PO Box 980022  
Park City, Utah 84098

Pool Consultant  
**Cloward H2O**  
2696 N University Ave, Suite 290  
Provo, UT 84604

Landscape Architect  
**EPG Design**  
6949 South High Tech Drive, Suite 100  
Midvale, Utah 84047

Specifications Writer  
Friday Group  
88 Mainelli Road  
Middlebury, VT

Code Consultant  
**Holmes**  
600 1st Avenue, Suite 200A  
Seattle, WA 98104

**Fire Protection Engineer**  
**Jensen Hughes**  
One Research Drive, Suite 305C  
Waltham, MA 01581

Vertical Transportation Consultant  
**Lorch Bates**  
19515 North Creek Parkway, Suite 304  
Bellevue, WA 98004

Structural Engineer  
Magnusson Klemencic Associates  
1301 5th Ave, Suite 3200  
Seattle, WA 98101

Lighting Designer  
O-  
1319 SE MLK Blvd, Suite 210

Building Envelope Consultant:  
**RDH**  
2101 N 34th St

Accessibility Consultant  
**Studio Pacifica**  
2144 Westlake Ave N, Suite F

MEP Engineer  
WSP USA  
1001 Fourth Ave., Suite 3100

00000, 00000, 00000

project manager TM, JB, SL, MD  
drawn by SK, SS, JR, CP, E  
JF, BD

checked by JB  
job no. 20062  
date 05/31/2024

revisions:

---

---

---

---

---

---

---

---

H 10/18/24	ASI 003.1
B 07/19/24	ASI 001

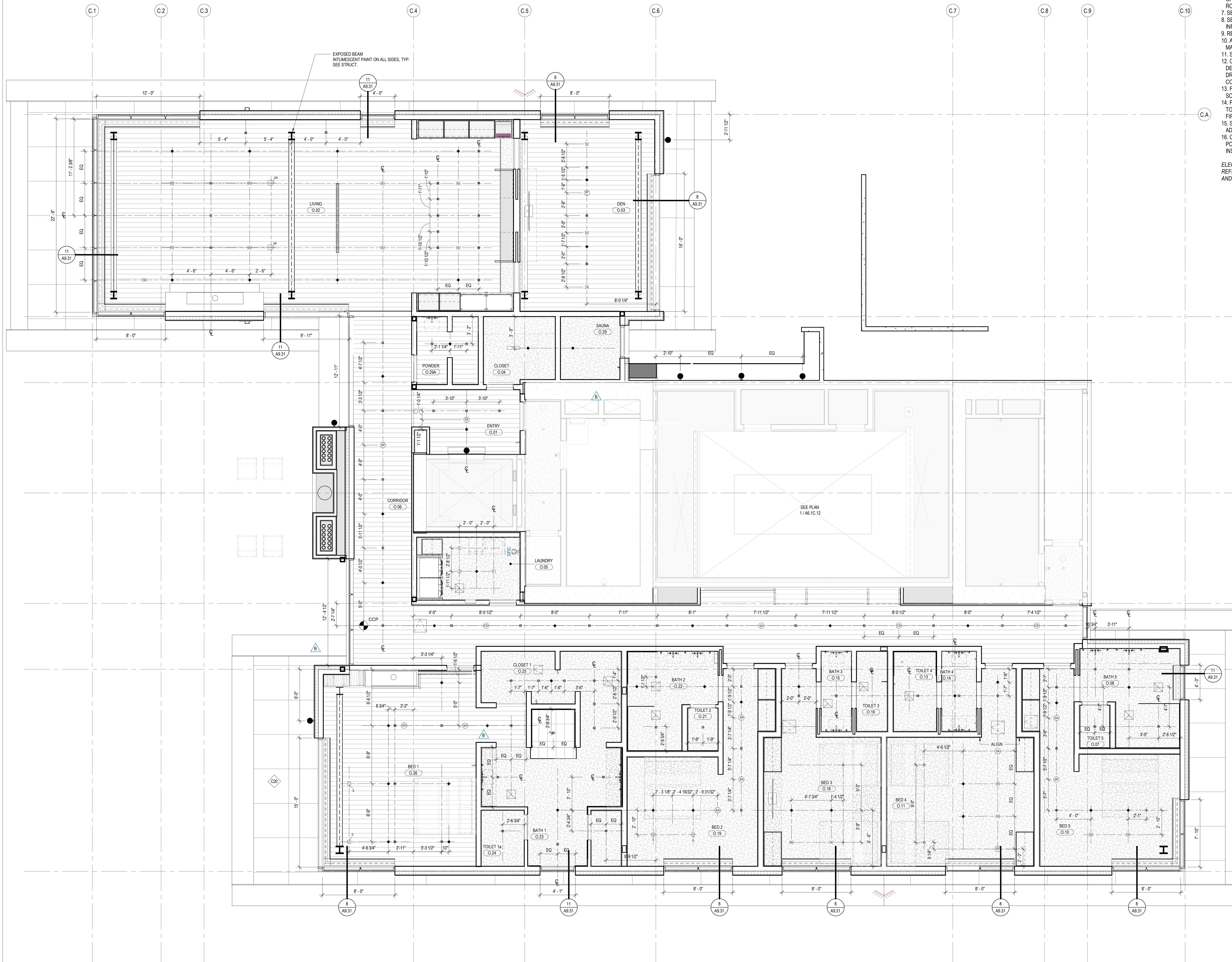
no.	date	by

IFC SET 3 OF 3

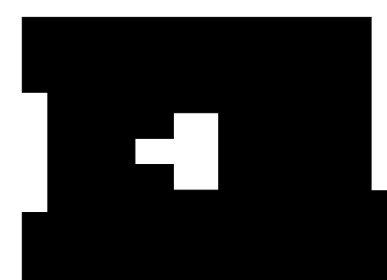


RCP - TOWER C - UNIT

## A6.2.0



1 ENLARGED RCP - TOWER C - UNIT O  
SCALE: 1/4" = 1'-0"



RCP - TOWER C - UNIT

## A6.2.0