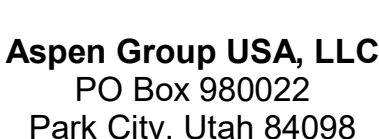


159 South Jackson St, Suite 800
Seattle, Washington 98104 USA
1 206 624 5670 olsonkundig.com

Olson Kundia

Project: **SOMMET BLANC**
300 Marsac Ave (B2 East Parcel)



date

E3.4.O

A. DRAWINGS ARE INTENDED TO SHOW GENERAL ARRANGEMENT, DESIGN, AND EXTENT OF WORK AND ARE DIAGRAMMATIC. DRAWINGS ARE NOT INTENDED TO SHOW EXACT LOCATIONS EXCEPT WHERE DIMENSIONS ARE SHOWN. ELECTRICAL WORK IS SHOWN ON PLANS USING STANDARD ELECTRICAL SYMBOLS AND NOTATION. COMMENCEMENT OF WORK SHALL BE BASED ON WORK VERY MEASUREMENTS PERTAINING THERETO AND ASSUME RESPONSIBILITY THEREFOR. ANY SUBSTANTIAL DIFFERENCES BETWEEN DRAWINGS AND CONDITIONS IN THE FIELD SHALL BE SUBMITTED TO THE ARCHITECT FOR REVIEW AND APPROVAL BEFORE PROCEEDING WITH WORK.

B. CONTRACT PERFORMANCE INCLUDES LABOR, MATERIALS, AND EQUIPMENT REQUIRED TO INSTALL A COMPLETE ELECTRICAL SYSTEM AS INDICATED ON DRAWINGS AND SPECIFICATIONS.

C. PROVIDE EXISTING SIGNS AND CONNECT EXIST SIGNS AND LUMINAIRES NOTED AS EMERGENCY TO EXISTING ELECTRICAL SYSTEM.

D. REFER TO LUMINAIRE SCHEDULE FOR INFORMATION.

E. FIXTURE CATALOG NUMBERS ARE SUBJECT TO CHANGE BY MANUFACTURER. VERIFY FIXTURE CATALOG NUMBERS WITH MANUFACTURER.

F. VERIFY EQUIPMENT SIZES AND POWER REQUIREMENTS FOR EQUIPMENT PROVIDED BY OTHERS.

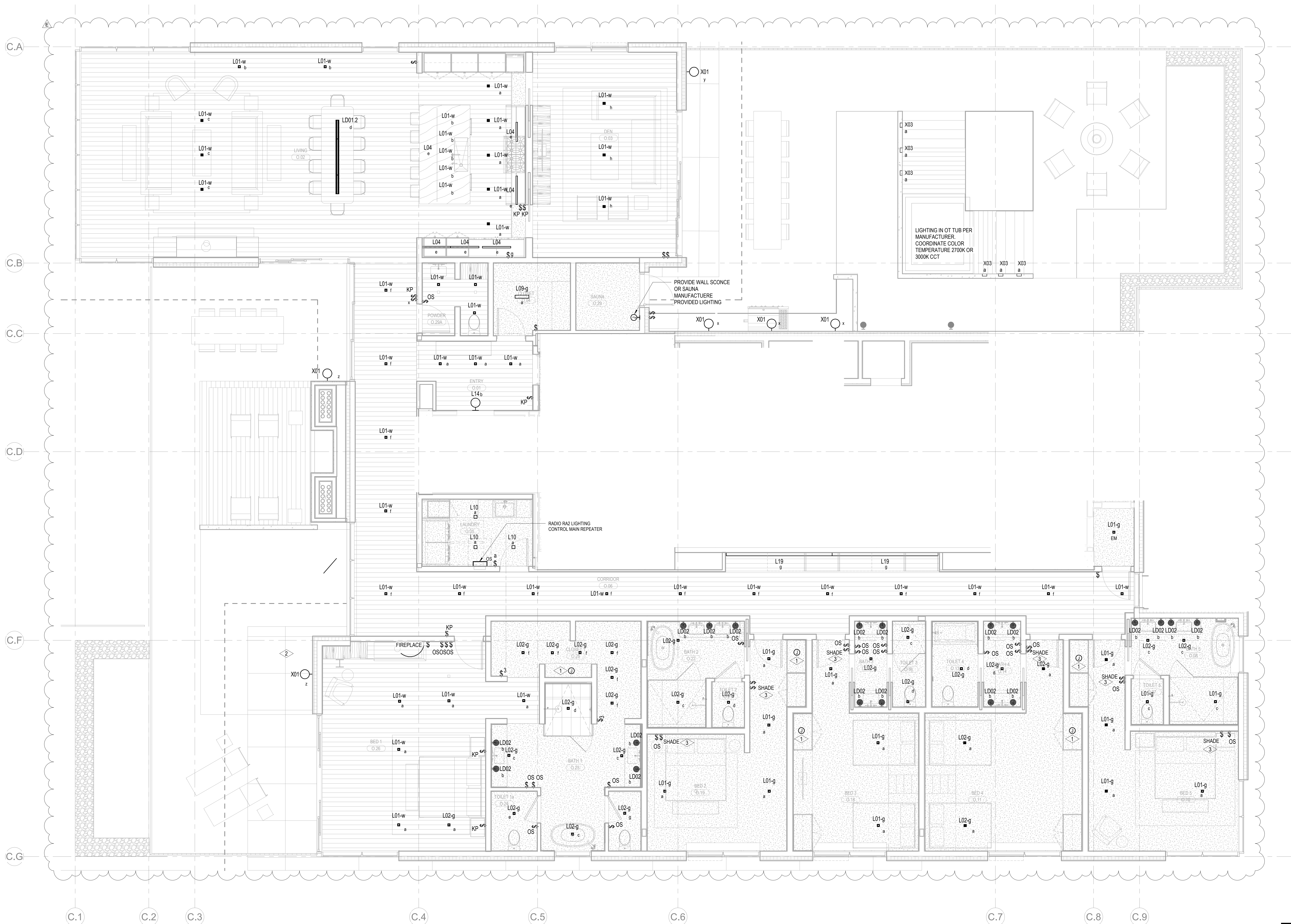
G. ELECTRICAL CONDUITS IN FINISHED SPACES SHALL BE CONCEALED. COORDINATE WITH OTHER TRADES AND USE CHASES AND CEILING SPACES. LOCATIONS OF ELECTRICAL JUNCTION BOXES IN FINISHED SPACES SHALL BE APPROVED BY ARCHITECT PRIOR TO ROUGH IN.

H. COORDINATE REMOTE DETERMINE MOUNTING LOCATIONS WITH ARCHITECT PRIOR TO ROUGH IN. COORDINATE LUMINAIRE VOLTAGE WITH ARCHITECT AND OWNER PRIOR TO PURCHASE AND INSTALLATION.

1 SUPPLY AND INSTALL CEILING MOUNTED JUNCTION BOX COMPLETE WITH CAPPED LIGHTING CIRCUIT WIRING
FOR INSTALLATION OF FUTURE CLOSELIGHT FIXTURE.

2 SUPPLY AND INSTALL LUTRON RADIO RA2 SYSTEM TO PROVIDE PARTIAL LIGHTING CONTROL IN THE
RESIDENTIAL UNITS MASTER BEDROOM (DENOTED AS BED 1) AND ALL ROOMS WITH MORE THAN THREE (3)
LIGHTING CONTROL ZONES ARE TO BE CONTROLLED BY THE LUTRON RADIO RA2 SYSTEM. ALL ROOMS WITH
THREE (3) LIGHTING CONTROL ZONES OR LESS ARE TO BE CONTROLLED BY LOCAL DIMMERS.

3 LUTRON WIRELESS PICO CONTROL SWITCH IS TO BE SUPPLIED AND INSTALLED FOR SHADE CONTROL.



1 TOWER C - ELECTRICAL LIGHTING UNIT PLAN - O
SCALE: 1/4" = 1'-0"

