



159 South Jackson St, Suite 600
Seattle, Washington 98104 USA
+1 206 624 5670 olsonkundig.com

SOMMET BLANC - ABC
DEER VALLEY, UTAH

Category	Number of people
People who did not go to the cinema last week	1

Seattle Chicago
www.mika.com
206 292 1200

checked by _____
job no. 20052
date 05/17/2024

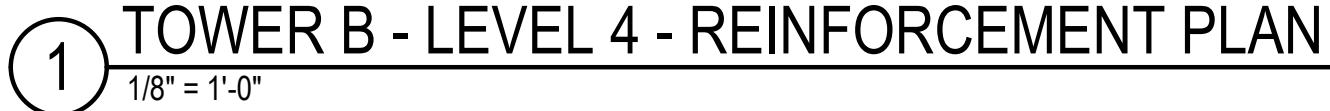
isions:

01/07/2025	ASI-007
04/08/2024	IFC SET 1 OF 3
11/18/2022	95% CD
date	by

05/17/2024

POWER B LEVEL 4
REINFORCING
PLAN

S2.B.14.R



1. SEE "GENERAL NOTES" FOR REINFORCING REQUIREMENTS.
2. SEE "TYPICAL POST-TENSIONED SLAB DETAILS" FOR ADDITIONAL INFORMATION.
3. SLAB REINFORCING SHALL BE PLACED IN THE FOLLOWING SEQUENCE:
 BOT BARS IN DIRECTION OF DISTRIBUTED TENDONS
 BOT BARS IN DIRECTION OF BANDED TENDONS
 TOP BARS IN DIRECTION OF DISTRIBUTED TENDONS
 TOP BARS IN DIRECTION OF BANDED TENDONS
4. (RX) INDICATES STUD RAIL. STUD RAILS SHALL BE PLACED AT ALL COLUMNS. SEE "TYPICAL STUD RAIL REINFORCEMENT AT COLUMNS" DETAIL AND STUD RAIL SCHEDULE.
5. SEE "TYPICAL CONCRETE OPENINGS AND EMBEDMENTS" FOR ADDITIONAL REINFORCEMENT REQUIREMENTS. NOTIFY STRUCTURAL ENGINEER OF ANY 1" OPENINGS NOT SHOWN ON THE STRUCTURAL DRAWINGS FOR WHICH THE TYPICAL DETAILS DO NOT APPLY. ADDITIONAL REINFORCEMENT MAY BE REQUIRED.
6. WHERE BAR LENGTH CANNOT BE ACHIEVED DUE TO SLAB EDGE, HOOK BAR.
7. WHERE NOTES AS "HOOKED", PROVIDE 90 OR 180 DEGREE HOOK AS SHOWN ON PLAN. NOTED BAR LENGTH IS LENGTH OF STRAIGHT PORTION OF BAR.
8. PROVIDE INTEGRITY BOTTOM BARS PER STUD RAIL SCHEDULE AT ALL COLUMNS. CENTER REINFORCEMENT ON COLUMNS AND PLACE INTEGRITY BARS EACH WAY WITHIN COLUMN VERTICAL REINFORCEMENT. TRIM AND HOOK AT SLAB EDGE AS REQUIRED.

PT TOP REINFORCEMENT SCHEDULE		
MARK	REINFORCING	REMARKS
PT50	(3) #5x5'-2"	HOOK AT END
PT51	(6) #5x6'-8"	HOOK AT END
PT52	(10) #5x9'-2"	HOOK AT END
PT53	(8) #5x6'-8"	HOOK AT END
PT54	(6) #5x14'-2"	HOOK AT END
PT55	(8) #5x14'-2"	HOOK AT END
PT56	(16) #5x11'-2"	HOOK AT END
PT57	(16) #5x14'-2"	HOOK AT END
PT58	(12) #5x6'-8" @ 12"	HOOK AT END
PT59	(14) #5x11'-2" @ 12"	HOOK AT END
PT60	#5x11'-2" @ 10"	HOOK AT END
PT61	#5x6'-8" @ 10"	HOOK AT END
PT62	#6x9'-0" @ 4"	HOOK AT END
PT63	#6x9'-0" @ 6"	HOOK AT END
PT64	#6x19'-2" @ 12"	HOOK AT END
PT65	#5x14'-2" @ 12"	HOOK AT END

