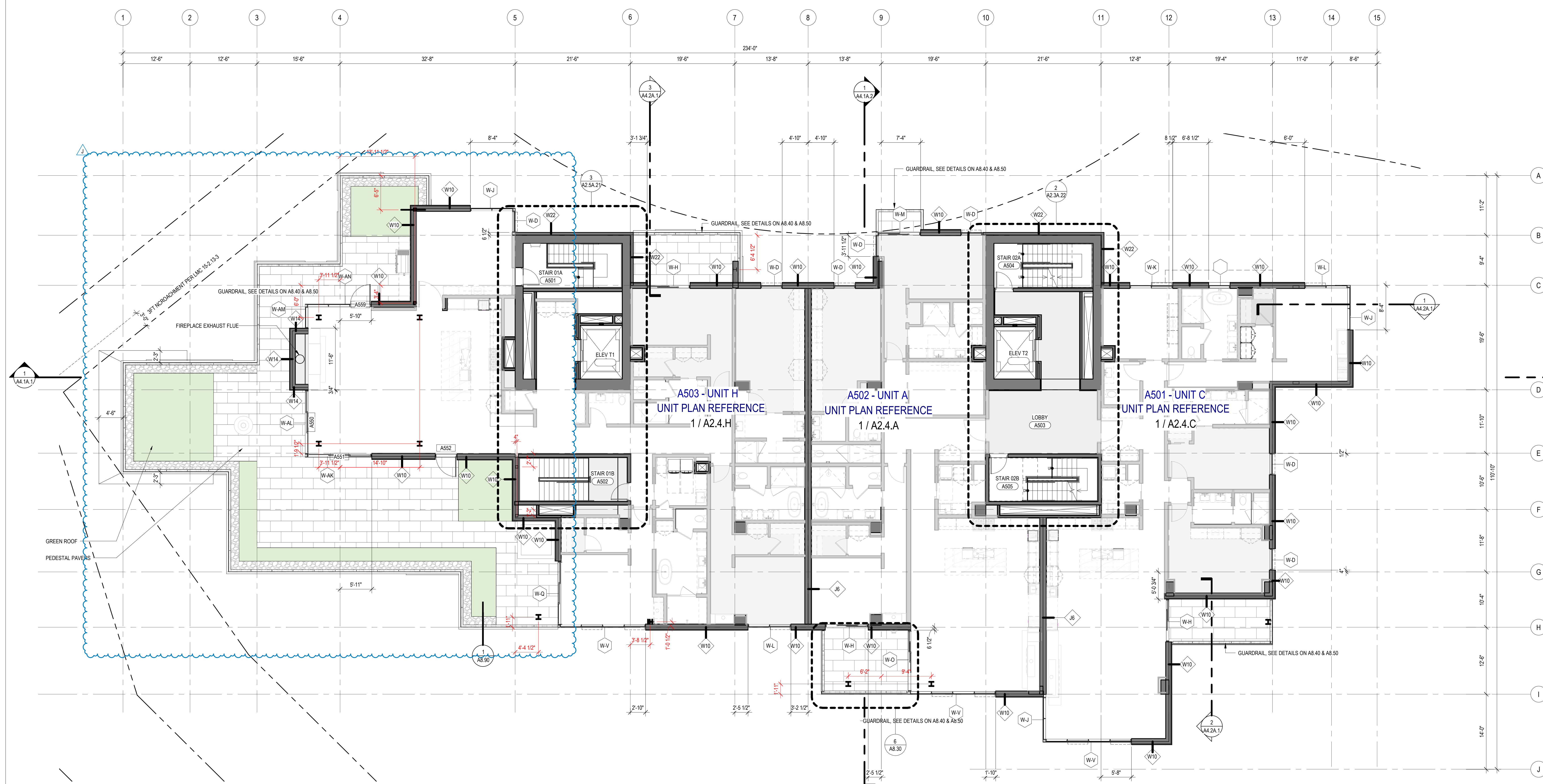


**PLAN GENERAL NOTES**

1. DIMENSIONS ARE TO FACE OF STUD OF EXTERIOR WALLS, CORRIDOR WALLS & INTERIOR WALLS. UNO
2. DIMENSIONS ARE TO CENTERLINE OF DEMISING WALLS. UNO
3. ALL EXPOSED STRUCTURAL STEEL TO RECEIVE 1HR INTUMESCENT PAINTING. UNO
4. ALL FRAMED EXTERIOR WALLS, FLOOR SLABS AND CEILING SHALL BE CAST 50' FROM FACE OF CONCRETE TO ALLOW FOR FLUSH ALIGNMENT OF SHEATHING TO EDGE OF SLAB. UNO
5. CASEWORK DIMENSIONS ARE TO FACE OF FINISH. UNO
6. SEE SHEETS 00.10 AND 00.11 FOR ASSEMBLIES.
7. ALL CORRIDOR WALLS ARE TYPE **BE**. UNO
8. ALL DEMISING WALLS ARE TYPE **JB**. UNO
9. ALL INTERIOR PARTITIONS ARE TYPE **AB**. UNO
10. ALL FURRING AROUND CONCRETE BEAMS AND COLUMNS TYPE **GI**. UNO
11. ALL VENT SHAFT WALLS ARE TYPE **K4**. UNO
12. REFER TO LIFE SAFETY ALARMS 30.01, 30.34 FOR FULL EXTENT OF FIRE RATED WALLS.
13. ALL LAYOUTS ON SHEETS **AD** TO **AD** 08 ARE TO FACE OF FINISH.
14. ALL OWNER PARKING STALLS SHALL INCLUDE EV INFRASTRUCTURE.
15. REFER TO SHEET 00.08 FOR ANSI TYPE B ACCESSIBILITY REQUIREMENTS.
16. REFER TO SHEET 00.07 FOR ANSI TYPE A ACCESSIBILITY REQUIREMENTS.
17. REFER TO SHEET 00.09 FOR ADA COMPLIANCE ACCESSIBILITY REQUIREMENTS.
18. ALL MECHANICAL EQUIPMENT LOCATED WITHIN ELEVATOR/MECHANICAL EQUIPMENT ENCLOSURE.



1 TOWER A - LEVEL 5  
SCALE: 1/8" = 1'-0"

SCALE: 1/8" = 1'-0"

