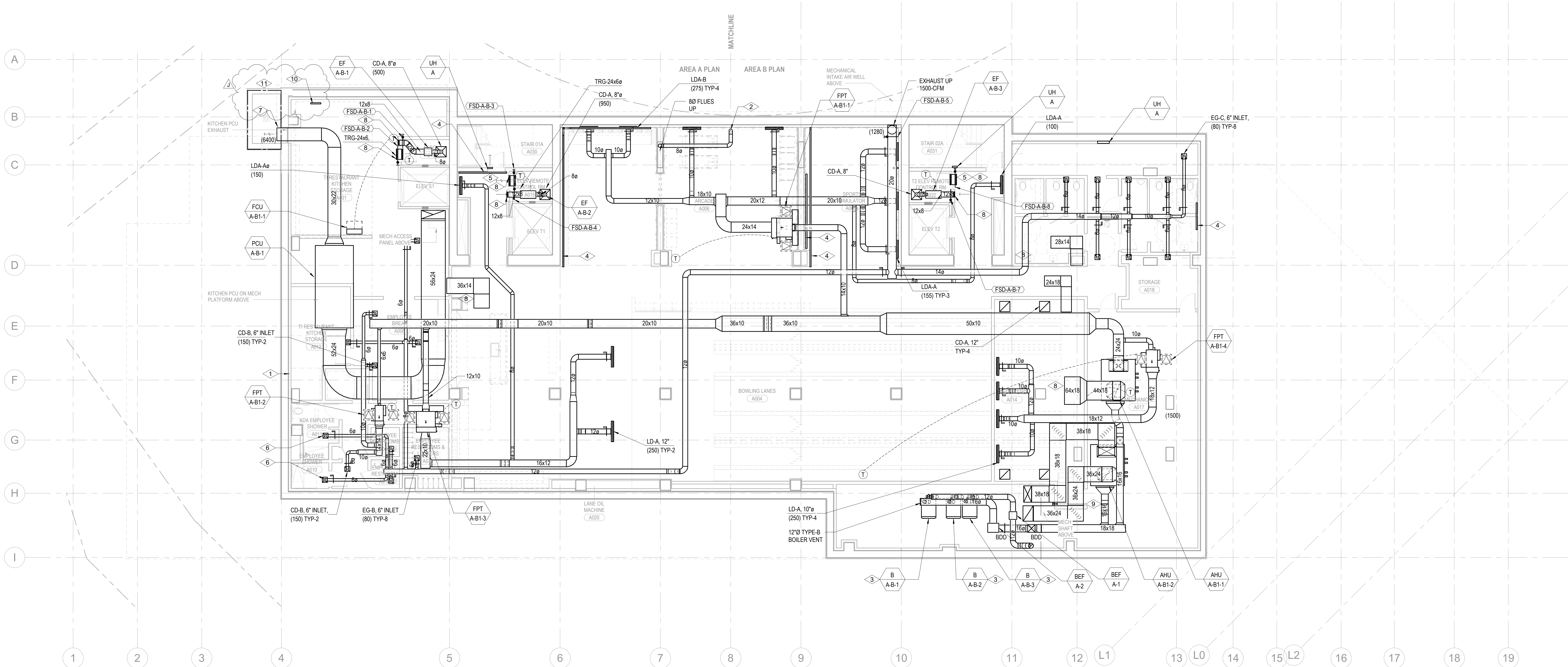


SHEET NOTES:

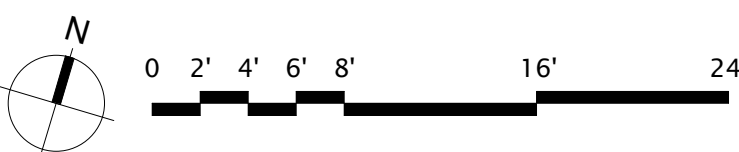
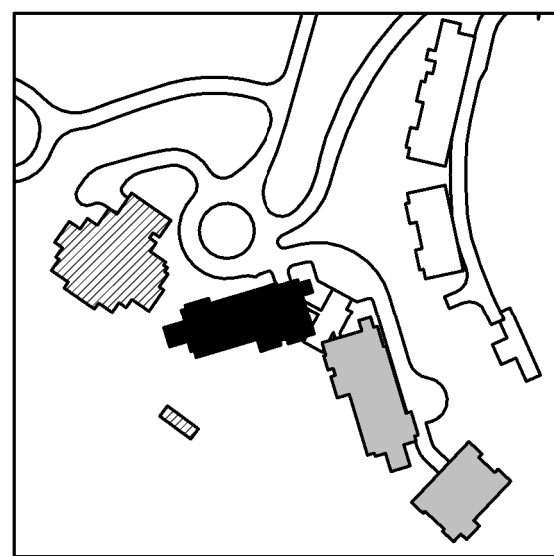
- A. REFER TO M2.4 SERIES FOR ENLARGED PLANS.
B. FIREPLACE FLUE ROUTING SHOWN FOR REFERENCE. REFER TO ENLARGED UNIT PLANS FOR ROUTING AND SIZING DETAIL.
C. MECHANICAL EQUIPMENT SHOWN FOR REFERENCE. REFER TO ENLARGED UNIT PLANS FOR DETAIL.
D. ARCHITECT SHALL PROVIDE 1-SQFT NFA OPENINGS IN ALL FULL HEIGHT, NON-RATED WALLS FOR RETURN AIR PATHS IF NO DUCT TRANSFER IS SHOWN.
E. ALL EQUIPMENT, INSULATION, WIRING, AND INFRASTRUCTURE IN THE PLENUM SHALL BE PLENUM RATED.
F. FLEX DUCT SHALL NOT BE INSTALLED ABOVE FINISHED HARD LID CEILINGS.
G. PROVIDE BUTTON TYPE TEMPERATURE SENSOR IN PUBLIC AREAS. SEE DETAIL-13, SHEET M5.04
H. PROVIDE REMOTE CABLE DAMPER OPERATOR IN DIFFUSERS ABOVE HARD LID CEILINGS. SEE DETAIL-9, SHEET M5.04

NUMBERED NOTES:

1. FUTURE KITCHEN EQUIPMENT AND INFRASTRUCTURE PROVIDED UNDER SEPARATE PERMIT.
2. CONNECT TO MANUFACTURED FIREPLACE. SEE FIREPLACE INSTRUCTIONS FOR MORE INFORMATION.
3. PROVIDE ENEREX SMDS-8 MODULATING DAMPER OFF BOILER EXHAUST STACK WITH 120V/1PH ELECTRICAL POWER.
4. 3" FREE AIR GAP ALONG THIS WALL FOR RETURN AIR. SEE ARCH DRAWINGS.
5. FSD ACCESS IN ELECTRICAL ROOM.
6. GRILL AND DUCTWORK BACK TO BRANCH LINE SHALL BE STAINLESS STEEL CONSTRUCTION.
7. PROTECT EXHAUST DUCT OPENING INTO WELL WITH WMS.
8. DISCHARGE AND/OR INTAKE ABOVE CEILING PLENUM. PROTECT OPENING WITH WMS.
9. PROVIDE MODULATING PRESSURE CONTROLLER WITH 120V/1PH ELECTRICAL POWER.
10. FUTURE SNOWMELT HEADER LOCATION. RADIANT HYDRONIC SNOWMELT SYSTEM TO BE DESIGN-BUILD BY OTHERS.
11. FUTURE SNOWMELT AREA. RADIANT HYDRONIC SNOWMELT LOCATION TO BE DESIGN-BUILD BY OTHERS



1 TOWER A - LEVEL B MECHANICAL DUCT PLAN
SCALE: 1/8" = 1'-0"



Reserved for permit stamp

100 South Jackson St., Suite 600
Seattle, Washington 98104 USA
+1 206 834 3870 olsonkundig.com

Olson Kundig

project
SOMMET BLANC
9300 Marzac Ave (B2 East Parcel)
Park City, Utah 84060



Aspen Group USA, LLC
PO Box 980022
Park City, Utah 84098

Pool Consultant
Cloward M20
2696 N University Ave, Suite 290
Provo, UT 84604

Landscape Architect
EPG Design
6048 South High Tech Drive, Suite 100
Midvale, Utah 84047

Specifications Writer
Friday Group
86 Marrett Road
Middletown, VT

Code Consultant
Holmes
600 1st Avenue, Suite 200A
Seattle, WA 98104

Fire Protection Engineer
Jensen Hughes
One Research Drive, Suite 305C
Westborough, MA 01581

Vertical Transportation Consultant
Larch Bates
19515 North Creek Parkway, Suite 304
Bothell, WA 98011

Structural Engineer
Magnusson Klemencic Associates
1301 5th Ave, Suite 3200
Seattle, WA 98101

Lighting Designer
O
1319 SE MLK Blvd, Suite 210
Portland, Oregon 97219

Building Envelope Consultant
RDH
2101 N 34th St
Seattle, WA 98103

Accessibility Consultant
Studio Pacifica
2144 Westlake Ave N, Suite F
Seattle, WA 98109

MEP Engineer
WSP USA
1001 Fourth Ave., Suite 3100
Seattle, WA 98154

principal architect _____
project manager _____
drawn by _____
checked by _____
job no. _____
date 5/31/2024

revisions:

J 01/10/2025 ASI 6

no. date by

IFC Set 3 of 3
5/31/2024

TOWER A - LVL B
MECHANICAL DUCT
PLAN

M2.2A.01