

Reserved for permit stamp

159 South Jackson St., Suite 800  
Seattle, Washington 98104 USA  
+1 206 834 3870 olsonkundig.com

Olson Kundig

project  
SOMMET BLANC  
9300 Marzac Ave (B2 East Parcel)  
Park City, Utah 84060



Aspen Group USA, LLC  
PO Box 980022  
Park City, Utah 84098

Pool Consultant  
Cloward H2O  
2696 N University Ave., Suite 290  
Provo, UT 84604

Landscape Architect  
EPG Design  
6948 South High Tech Drive, Suite 100  
Midvale, Utah 84047

Specifications Writer  
Friday Group  
86 Mainelli Road  
Middlebury, VT

Code Consultant  
Holmes  
600 1st Avenue, Suite 200A  
Seattle, WA 98104

Fire Protection Engineer  
Jensen Hughes  
One Research Drive, Suite 305C  
Westborough, MA 01581

Vertical Transportation Consultant  
Larch Bates  
19515 North Creek Parkway, Suite 304  
Bothell, WA 98011

Structural Engineer  
Magnusson Klemencic Associates  
1301 5th Ave., Suite 3200  
Seattle, WA 98101

Lighting Designer  
O-  
1319 SE MLK Blvd, Suite 210  
Portland, Oregon 97219

Building Envelope Consultant  
RDH  
2101 N 34th St  
Seattle, WA 98103

Accessibility Consultant  
Studio Pacifica  
2144 Westlake Ave N, Suite F  
Seattle, WA 98109

MEP Engineer  
WSP USA  
1001 Fourth Ave., Suite 3100  
Seattle, WA 98154

principal architect \_\_\_\_\_  
project manager \_\_\_\_\_  
drawn by \_\_\_\_\_  
checked by \_\_\_\_\_  
job no. \_\_\_\_\_  
date 05/31/2024

revisions:

J 1/19/2024 ASI 6  
E 10/18/2024 ASI 003.1  
Z 5/24/2024 WFC 3

no. date by

IFC Set 3 of 3  
05/31/2024

TOWER C - LVL P1  
MECHANICAL DUCT  
PLAN

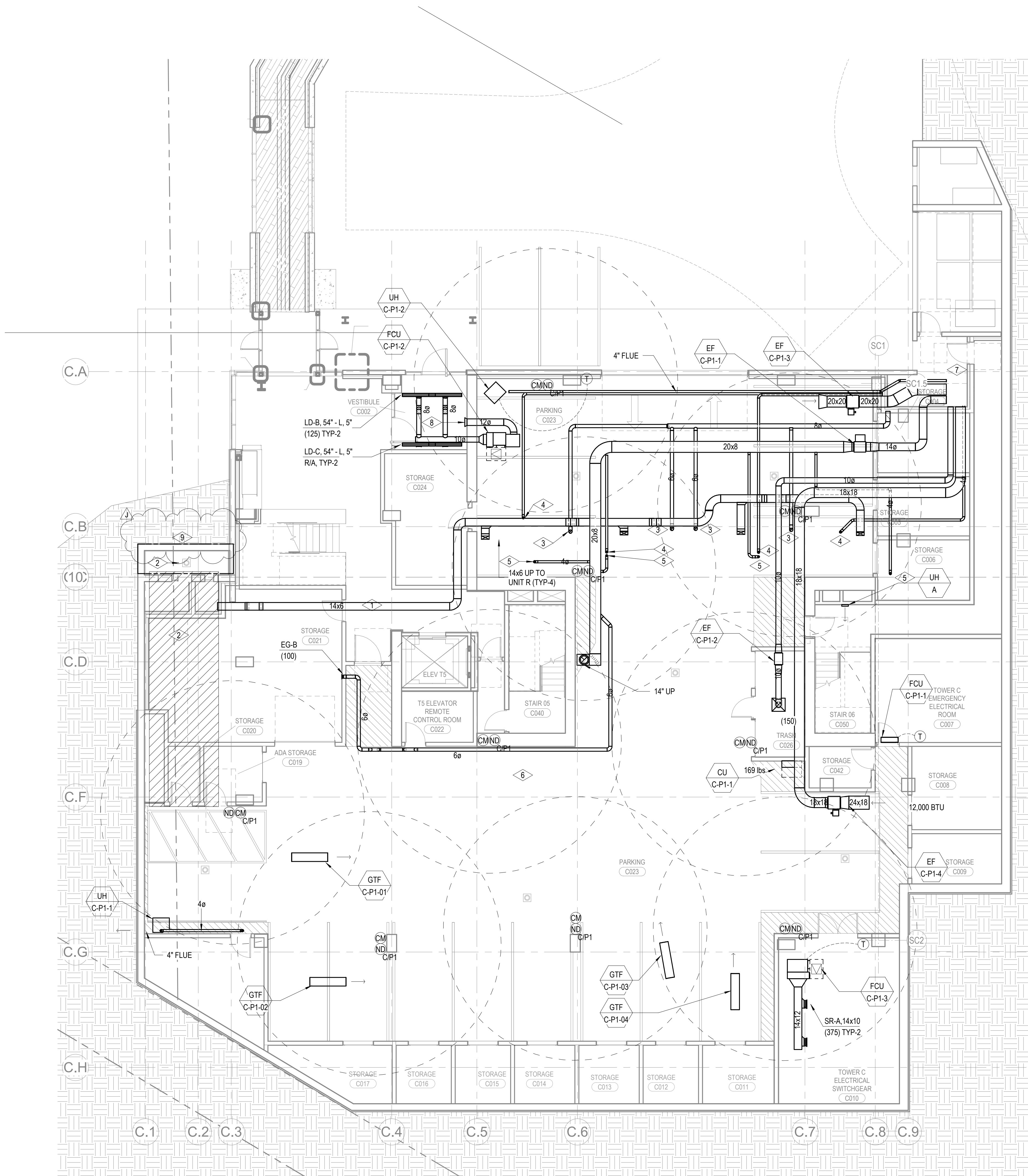
M2.2C.01

#### SHEET NOTES:

- REFER TO M2.4 SERIES FOR ENLARGED UNIT PLANS.
- FIREPLACE FLUE ROUTING SHOWN FOR REFERENCE. REFER TO ENLARGED UNIT PLANS FOR ROUTING AND SIZING DETAIL.
- MECHANICAL EQUIPMENT AS SHOWN FOR REFERENCE. REFER TO ENLARGED UNIT PLANS FOR DETAIL.
- UNLESS OTHERWISE NOTED, MEDIUM PRESSURE DUCT RUNOUTS TO TERMINAL BOXES SHALL BE THE SAME SIZE AS TERMINAL BOX INLET. DUCT RUNOUTS TO TERMINAL BOXES SHALL BE 2" LARGER THAN INLET IF RUNOUT IS GREATER THAN 15'
- ALL DUCT BRANCHES LEADING TO DIFFUSERS ARE TO MATCH NECK SIZE OF DIFFUSER UNLESS NOTED OTHERWISE.

#### NUMBERED NOTES:

- THIS SPACE TO MAINTAIN POSITIVE PRESSURE RELATIVE TO THE GARAGE.
- SEE ARCHITECTURAL DRAWINGS FOR INTAKE WELL INFORMATION.
- 6" DUCT UP TO KITCHEN EXHAUST
- 4" DUCT UP TO DRYER EXHAUST
- 4" DUCT UP TO BATHROOM EXHAUST
- ALL DUCTS AND EQUIPMENT LOCATED IN THE GARAGE SHALL BE INSTALLED TIGHT TO UNDERSIDE OF THE SLAB TO MAINTAIN 8-6" CLEARANCES FOR VEHICLES.
- PROTECT EXHAUST DUCT OPENING INTO WELL WITH WIMS.
- DISCHARGE AND/OR INTAKE - PROTECT OPENING WITH WIMS.
- FUTURE SNOWMELT AREA, RADIANT HYDRONIC SNOWMELT SYSTEM TO BE DESIGN-BUILD BY OTHERS



1 TOWER C - PARKING LEVEL MECHANICAL DUCT PLAN  
SCALE: 1/8" = 1'-0"

