

Reserved for permit stamp

100 South Jackson St., Suite 800  
Seattle, Washington 98104 USA  
+1 206 834 3870 olsonkundig.com

Olson Kundig

project  
SOMMET BLANC  
9300 Marzac Ave (B2 East Parcel)  
Park City, Utah 84300



Aspen Group USA, LLC  
PO Box 980022  
Park City, Utah 84098

Pool Consultant  
Cloward M20  
2696 N University Ave, Suite 290  
Provo, UT 84604

Landscape Architect  
EPG Design  
6948 South High Tech Drive, Suite 100  
Midvale, Utah 84047

Specifications Writer  
Friday Group  
86 Marrett Road  
Middsbury, VT

Code Consultant  
Holmes  
600 1st Avenue, Suite 200A  
Seattle, WA 98104

Fire Protection Engineer  
Jensen Hughes  
One Research Drive, Suite 305C  
Westborough, MA 01581

Vertical Transportation Consultant  
Larch Bates  
19515 North Creek Parkway, Suite 304  
Bothell, WA 98011

Structural Engineer  
Magnusson Klemencic Associates  
1301 5th Ave, Suite 3200  
Seattle, WA 98101

Lighting Designer  
O-  
1319 SE MLK Blvd, Suite 210  
Portland, Oregon 97219

Building Envelope Consultant  
RDH  
2101 N 34th St  
Seattle, WA 98103

Accessibility Consultant  
Studio Pacifica  
2144 Westlake Ave N, Suite F  
Seattle, WA 98109

MEP Engineer  
WSP USA  
1001 Fourth Ave., Suite 3100  
Seattle, WA 98154

principal architect \_\_\_\_\_  
project manager \_\_\_\_\_  
drawn by \_\_\_\_\_  
checked by \_\_\_\_\_ Checker  
job no. \_\_\_\_\_  
date 05/31/2024

revisions:

J 11/02/2024 ASB  
2 5/24/2024 WCB

no. date by

IFC Set 3 of 3  
05/31/2024

ENLARGED  
MECHANICAL PLAN -  
UNIT M

M2.4.M

#### SHEET NOTES:

- A. CONFIRM EXACT LOCATION OF ALL WALL DEVICES WITH ARCHITECTURAL ELEVATIONS.  
B. CONFIRM ALL CEILING AND WALL ACCESS DOORS WITH ARCHITECTURAL RCPs AND WALL ELEVATIONS.  
C. REFER TO M3-2A-01 THROUGH M3-2C-R FOR RADIANT FLOOR HWYSR PIPING ROUTING AND SIZING.  
D. PROVIDE 1" INCH ACOUSTIC LINING FOR ENTIRETY OF MAIN DUCT RUN OFF FAN COIL.  
E. ROUTE 3/4" CONDENSATE DRAINS FROM FCUs TO NEAREST TAILPIECE.

#### NUMBERED NOTES:

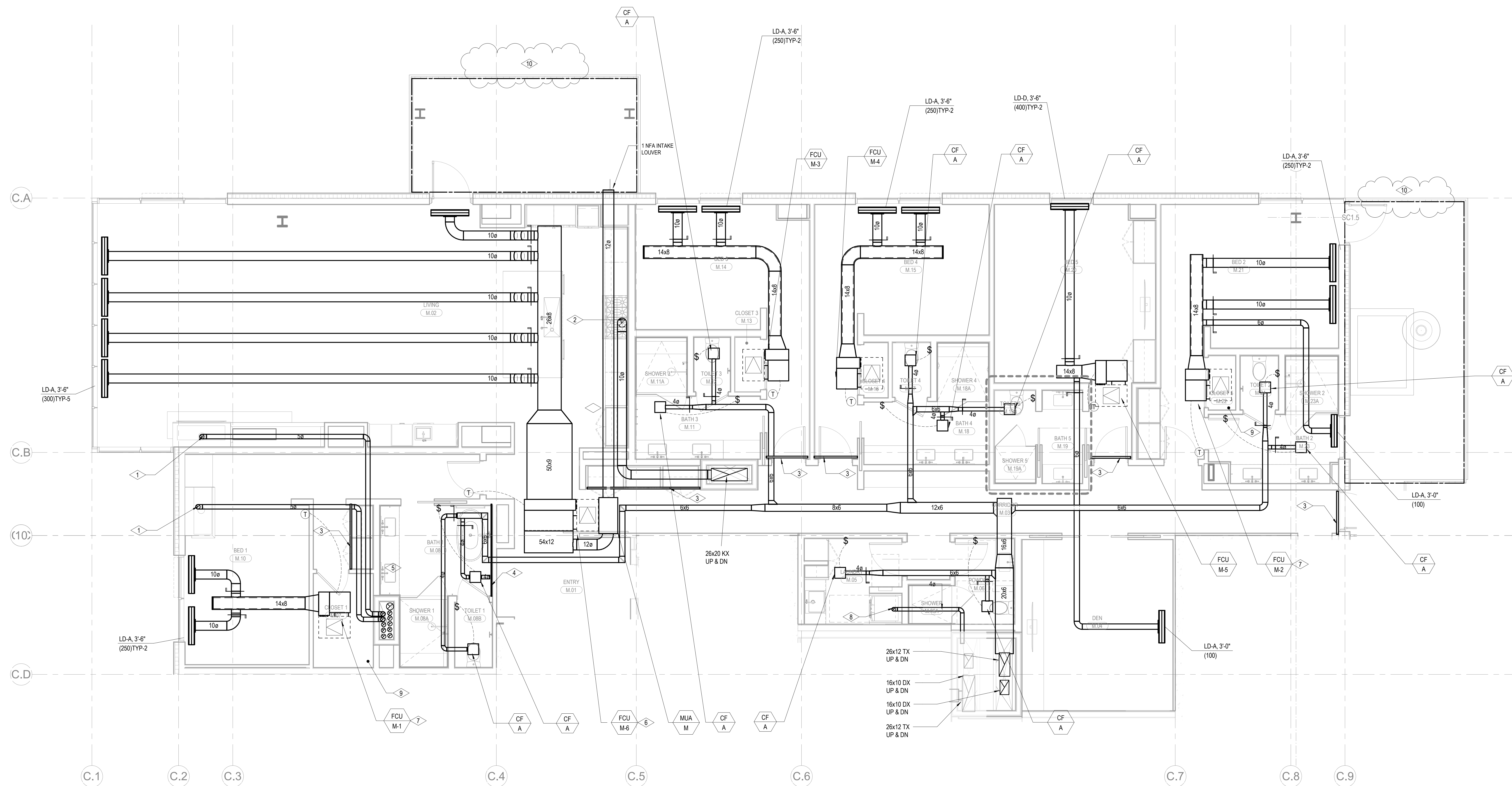
1. 5"Ø CONCENTRIC FLUE TO GAS FIREPLACE. PROVIDE ORTAL IN-LINE 180 POWERVENT (120V/15A).  
2. RANGE HOOD EXHAUST FAN TO BE INTEGRAL WITH RANGE SPECIFIED BY THE ARCHITECT.  
3. INTERLOCK CONTROL WITH MUA-A.  
4. 2" RETURN AIR SLOT  
5. 1" RETURN AIR SLOT  
6. ELECTRICAL RADIANT FLOOR TO BE PROVIDED IN MASTER BATHROOM. SEE ELECTRICAL DRAWINGS.  
7. OWNER OPTION: PROVIDE 208V/16A/1 CONNECTION FOR APRILAIRE 800 HUMIDIFIER DOWNSTREAM OF FAN COIL UNIT. REFER TO ELECTRICAL DRAWINGS FOR DETAIL. REFER TO PLUMBING DRAWINGS FOR 1/2" CW CONNECTION. ROUTE 3/4" CD TO NEAREST SINK TAILPIECE. REFER TO DETAILS M5.04/8 & M5.04/12 FOR INSTALLATION CONNECTION.  
8. REMOVE SOUND LINING FROM FCU AND PROVIDE PRICE RSP 3'-0" SOUND ATTENUATOR WITH A MINIMUM INSERTION LOSS OF:  

63	125	250	500	1000	2000	4000	8000
0	4	8	8	7	5	5	0

  
9. CONFIRM WITH OWNER AND ARCHITECT PRIOR TO PROVIDING HUMIDIFIER.  
10. OWNER OPTION: PROVIDE 120V/16A/1 CONNECTION FOR APRILAIRE 800 HUMIDIFIER DOWNSTREAM OF FAN COIL UNIT. REFER TO ELECTRICAL DRAWINGS FOR DETAIL. REFER TO PLUMBING DRAWINGS FOR 1/2" CW CONNECTION. ROUTE 3/4" CD TO NEAREST SINK TAILPIECE. REFER TO DETAILS M5.04/8 & M5.04/12 FOR INSTALLATION CONNECTION.  
11. REMOVE SOUND LINING FROM FCU AND PROVIDE PRICE RSP 3'-0" SOUND ATTENUATOR WITH A MINIMUM INSERTION LOSS OF:  

63	125	250	500	1000	2000	4000	8000
0	4	8	8	7	5	5	0

  
12. CONFIRM WITH OWNER AND ARCHITECT PRIOR TO PROVIDING HUMIDIFIER.  
13. CONNECT 4"Ø TO DRYER.  
14. LOCATION OF STEAM GENERATOR FOR DUCT HUMIDIFIER, CONFIRM EXACT LOCATION WITH ARCHITECT.  
15. FUTURE SNOWMELT AREA, RADIANT HYDRONIC SNOWMELT SYSTEM TO BE DESIGN-BUILD BY OTHERS.



1 BLDG C - MECHANICAL UNIT PLAN - M  
SCALE: 1/4" = 1'-0"

