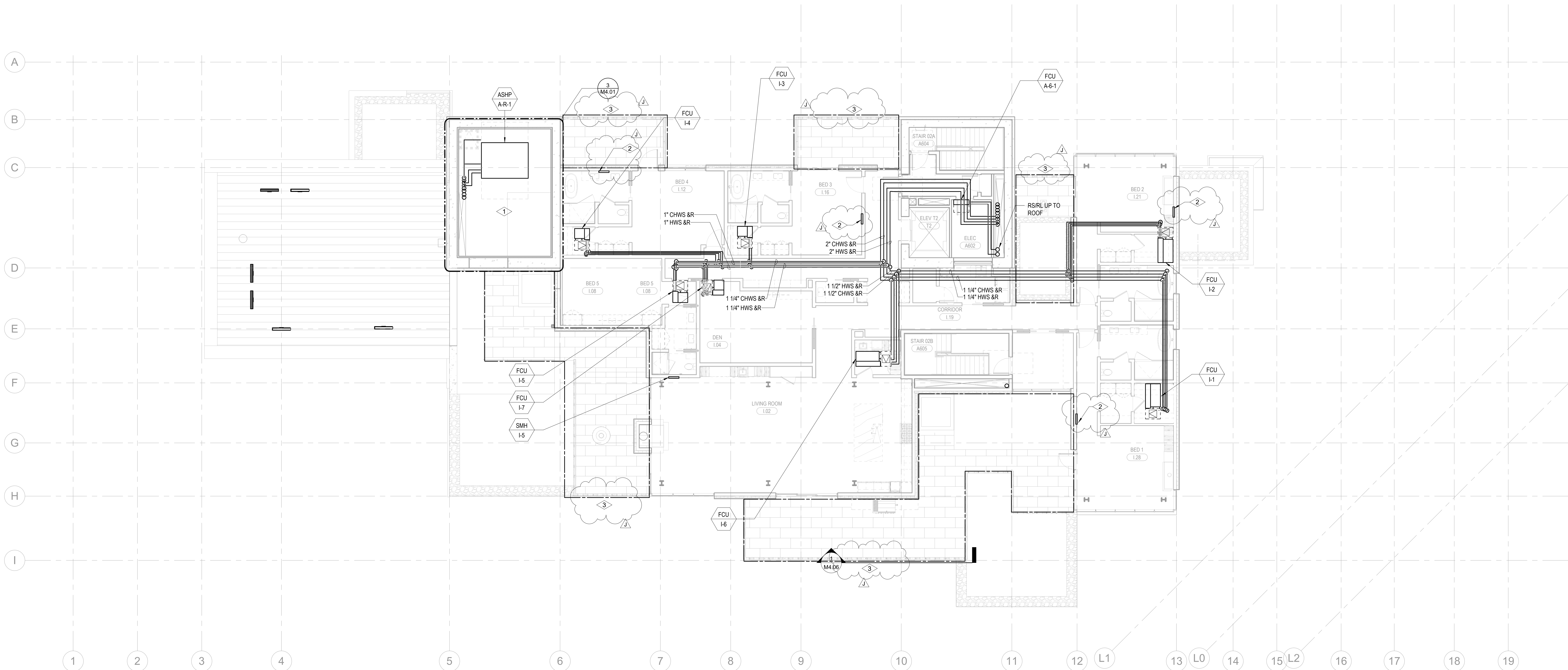


SHEET NOTES:

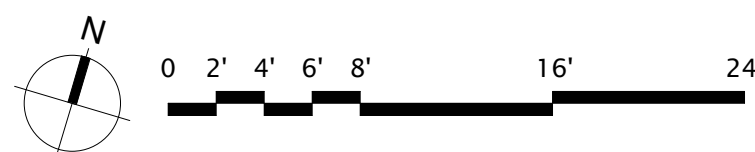
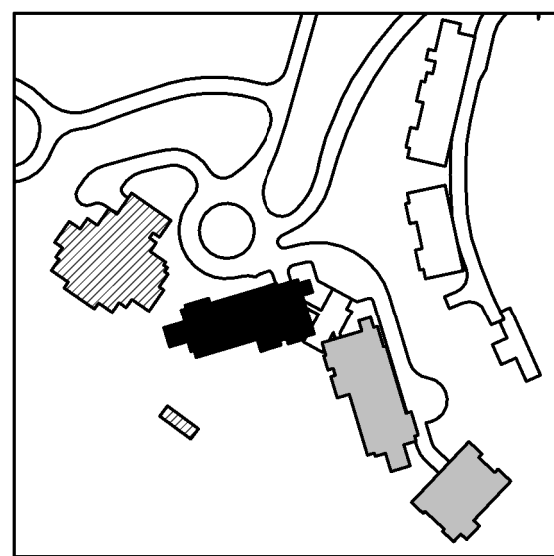
- A. ALL CHILLED WATER AND HOT WATER BRANCH PIPING SHALL BE SIZED AT 1" FOR ALL FAN COIL UNITS UNLESS OTHERWISE NOTED.
B. REFER TO MANUFACTURER SPECIFICATIONS FOR REFRIGERANT PIPING SIZING FOR SPLIT SYSTEM FAN COILS.
C. ROUTE 3/4" CONDENSATE FROM FCU TO NEAREST SINK TAILPIECE PER DETAIL M5.068.

NUMBERED NOTES:

1. PROVIDE HEAT TRACE ON ALL EXPOSED PIPING. REFER TO ELECTRICAL DRAWINGS FOR 120V CONNECTION.
2. FUTURE SNOWMELT HEADER LOCATION. RADIANT HYDRONIC SNOWMELT SYSTEM TO BE DESIGN-BUILD BY OTHERS.
3. FUTURE SNOWMELT AREA. RADIANT HYDRONIC SNOWMELT SYSTEM TO BE DESIGN-BUILD BY OTHERS.



1 TOWER A - LEVEL 6 MECHANICAL PIPING PLAN
SCALE: 1/8" = 1'-0"



Reserved for permit stamp

109 South Jackson St., Suite 600
Seattle, Washington 98104 USA
+1 206 834 2670 olsonkundig.com

Olson Kundig

project
SOMMET BLANC
8900 Marzac Ave (B2 East Parcel)
Park City, Utah 84060



Aspen Group USA, LLC
PO Box 980022
Park City, Utah 84098

Pool Consultant
Cloward M20
2696 N University Ave, Suite 290
Provo, UT 84604

Landscape Architect
EPG Design
6048 South High Tech Drive, Suite 100
Midvale, Utah 84047

Specifications Writer
Friday Group
86 Mainell Road
Middlebury, VT

Code Consultant
Holmes
600 1st Avenue, Suite 200A
Seattle, WA 98104

Fire Protection Engineer
Jensen Hughes
One Research Drive, Suite 305C
Westborough, MA 01581

Vertical Transportation Consultant
Larch Bates
19515 North Creek Parkway, Suite 304
Bothell, WA 98011

Structural Engineer
Magnusson Klemencic Associates
1301 5th Ave, Suite 3200
Seattle, WA 98101

Lighting Designer
O-
1319 SE MLK Blvd, Suite 210
Portland, Oregon 97219

Building Envelope Consultant
RDH
2101 N 34th St
Seattle, WA 98103

Accessibility Consultant
Studio Pacifica
2144 Westlake Ave N, Suite F
Seattle, WA 98109

MEP Engineer
WSP USA
1001 Fourth Ave., Suite 3100
Seattle, WA 98154

principal architect _____
project manager _____
drawn by _____
checked by _____
job no. _____
date 5/31/2024

revisions:

J 01/10/2025 ASI 6

no. date by

IFC Set 3 of 3
5/31/2024

TOWER A - LVL 6
MECHANICAL PIPING
PLAN

M3.2A.16