

- A. ALL CHILLED WATER AND HOT WATER BRANCH PIPING SHALL BE SIZED AT 1" FOR ALL FAN COIL UNITS UNLESS OTHERWISE NOTED.
- B. REFER TO MANUFACTURER SPECIFICATIONS FOR REFRIGERANT PIPING SIZING FOR SPLIT SYSTEM FAN COILS.
- C. ROUTE 3/4" CONDENSATE FROM FCU TO NEAREST SINK TAILPIECE PER DETAIL M5.06/8.

1 FUTURE BOILER FOR RADIANT HYDRONIC SNOWMELT SYSTEM TO BE DESIGN BUILD BY OTHERS
2 FUTURE EXPANSION TANK FOR RADIANT HYDRONIC SNOWMELT SYSTEM TO BE DESIGN BUILD BY OTHERS
3 FUTURE SNOWMELT HEADER LOCATION, RADIANT HYDRONIC SNOWMELT SYSTEM TO BE DESIGN-BUILD BY OTHERS

Seattle, Washington 98104 USA
+1 206 624 5670 olsonkundig.com

SOMMET BLANC
9300 Marsac Ave (B2 East Parcel)
Park City, Utah 84060

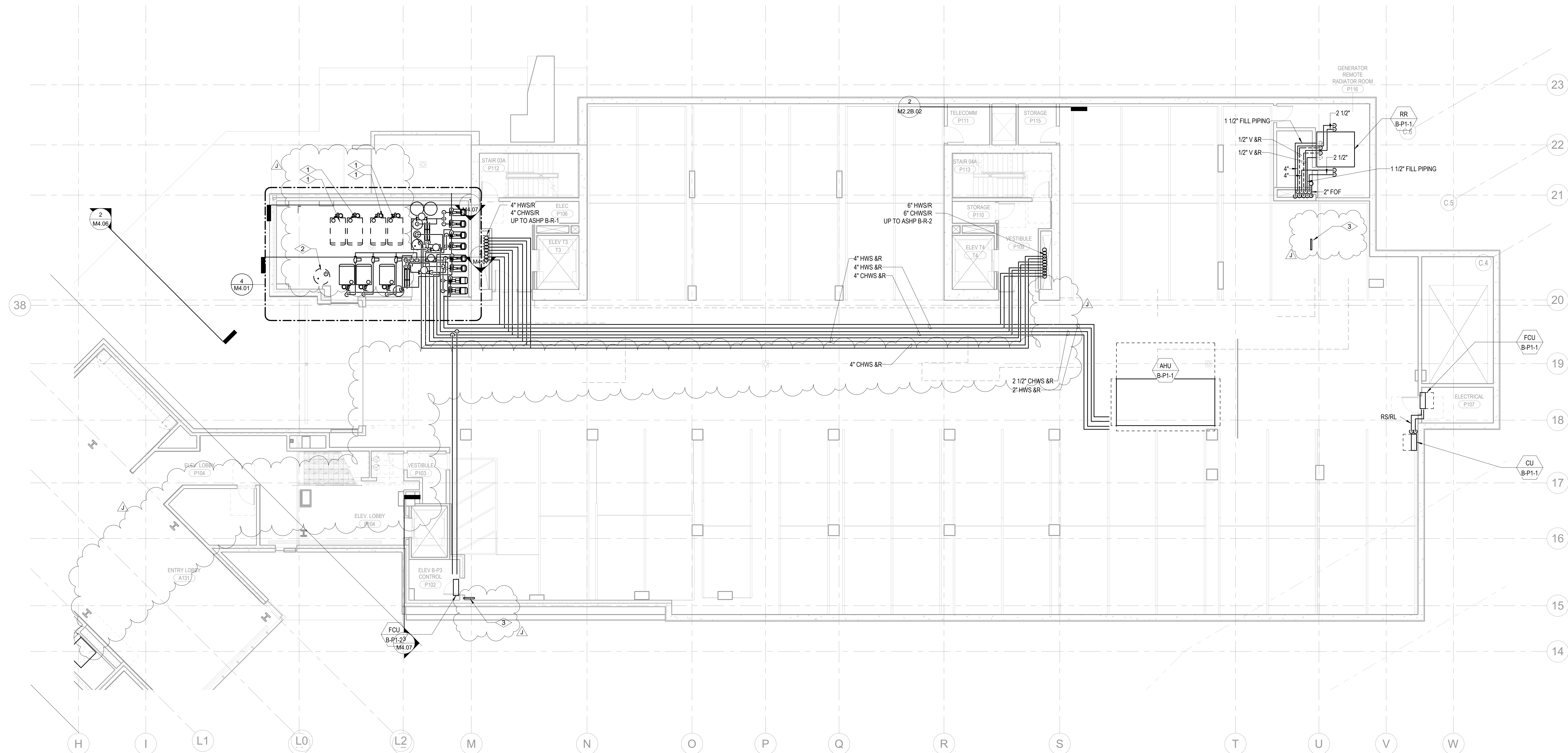


WSP USA
1001 Fourth Ave., Suite 3100
Seattle, WA 98154

[illegible]

IFC Set 3 of 3
5/31/2024

M3.2B.03



SCALE: 1/8" = 1'-0"

