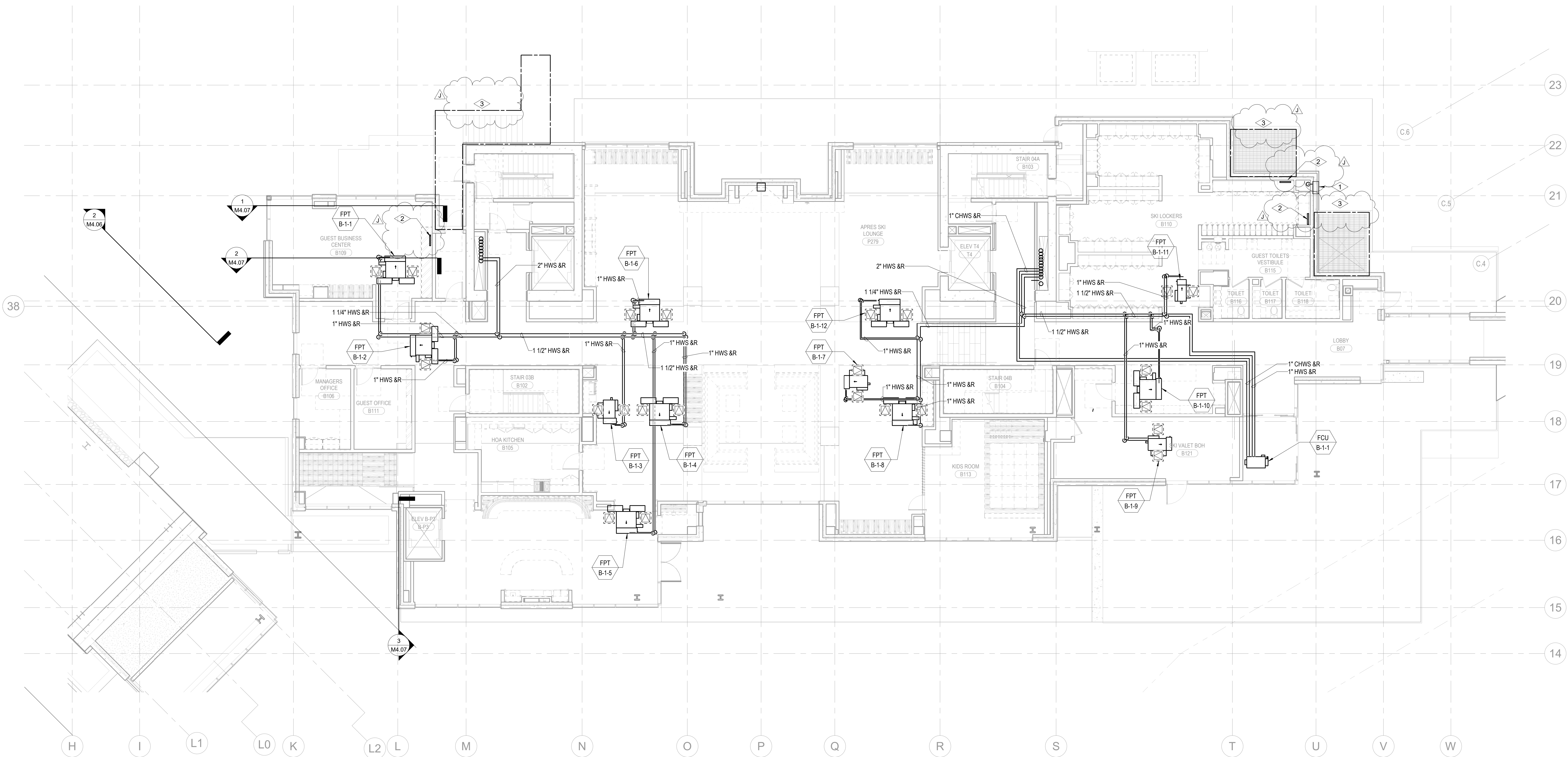


SHEET NOTES:

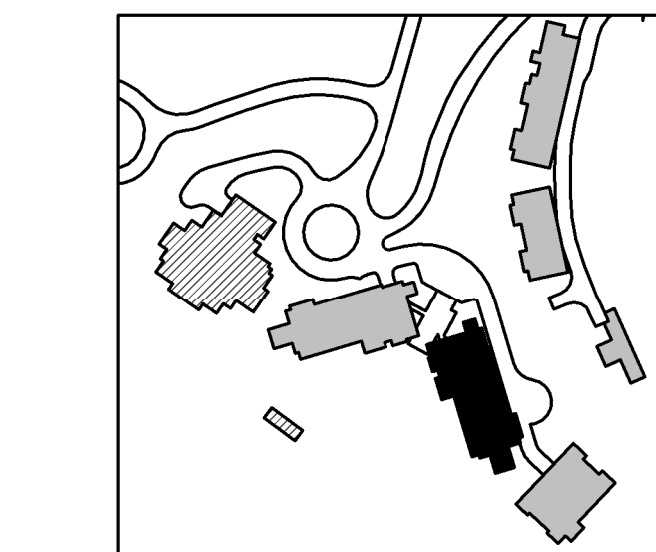
- A. ALL CHILLED WATER AND HOT WATER BRANCH PIPING SHALL BE SIZED AT 1" FOR ALL FAN COIL UNITS UNLESS OTHERWISE NOTED.  
REFER TO MANUFACTURER SPECIFICATIONS FOR REFRIGERANT PIPING SIZING FOR SPLIT SYSTEM FAN COILS.  
C. ROUTE 3/4" CONDENSATE TO NEAREST SINK TAILPIECE PER DETAIL M5.068.

NUMBERED NOTES:

1. REMOTE FUEL FILL ASSEMBLY WITH OVERFILL PROTECTION FURNISHED BY OTHERS AND INSTALLED BY MECHANICAL CONTRACTOR. INSTALL 2' FROM BUILDING OPENINGS.  
2. FUTURE SNOWMELT HEADER LOCATION, RADIANT HYDRONIC SNOWMELT SYSTEM TO BE DESIGN-BUILD BY OTHERS.  
3. FUTURE SNOWMELT AREA, RADIANT HYDRONIC SNOWMELT SYSTEM TO BE DESIGN-BUILD BY OTHERS.



1 TOWER B - LEVEL 1 MECHANICAL PIPING PLAN  
SCALE: 1/8" = 1'-0"



Reserved for permit stamp

109 South Jackson St., Suite 600  
Seattle, Washington 98104 USA  
+1 206 834 2670 olsonkundig.com

Olson Kundig

project  
SOMMET BLANC  
8900 Marsac Ave (B2 East Parcel)  
Park City, Utah 84060



Aspen Group USA, LLC  
PO Box 980022  
Park City, Utah 84098

Pool Consultant  
Cloward M20  
2696 N University Ave., Suite 290  
Provo, UT 84604

Landscape Architect  
EPG Design  
6949 South High Tech Drive, Suite 100  
Midvale, Utah 84047

Specifications Writer  
Friday Group  
86 Mainelli Road  
Middlebury, VT

Code Consultant  
Holmes  
600 1st Avenue, Suite 200A  
Seattle, WA 98104

Fire Protection Engineer  
Jensen Hughes  
One Research Drive, Suite 305C  
Westborough, MA 01581

Vertical Transportation Consultant  
Larch Bates  
19515 North Creek Parkway, Suite 304  
Bothell, WA 98011

Structural Engineer  
Magnusson Klemencic Associates  
1301 5th Ave., Suite 3200  
Seattle, WA 98101

Lighting Designer  
O-  
1319 SE MLK Blvd., Suite 210  
Portland, Oregon 97219

Building Envelope Consultant  
RDH  
2101 N 34th St  
Seattle, WA 98103

Accessibility Consultant  
Studio Pacifica  
2144 Westlake Ave N, Suite F  
Seattle, WA 98109

MEP Engineer  
WSP USA  
1001 Fourth Ave., Suite 3100  
Seattle, WA 98154

principal architect \_\_\_\_\_  
project manager \_\_\_\_\_  
drawn by \_\_\_\_\_  
checked by \_\_\_\_\_  
job no. \_\_\_\_\_  
date 5/31/2024

revisions:  
\_\_\_\_\_  
\_\_\_\_\_  
\_\_\_\_\_  
\_\_\_\_\_  
\_\_\_\_\_  
\_\_\_\_\_  
\_\_\_\_\_  
\_\_\_\_\_  
\_\_\_\_\_  
\_\_\_\_\_  
J 01/10/2025 ASI 6

no. date by

IFC Set 3 of 3  
5/31/2024

TOWER B - LVL 1  
MECHANICAL PIPING  
PLAN

M3.2B.11