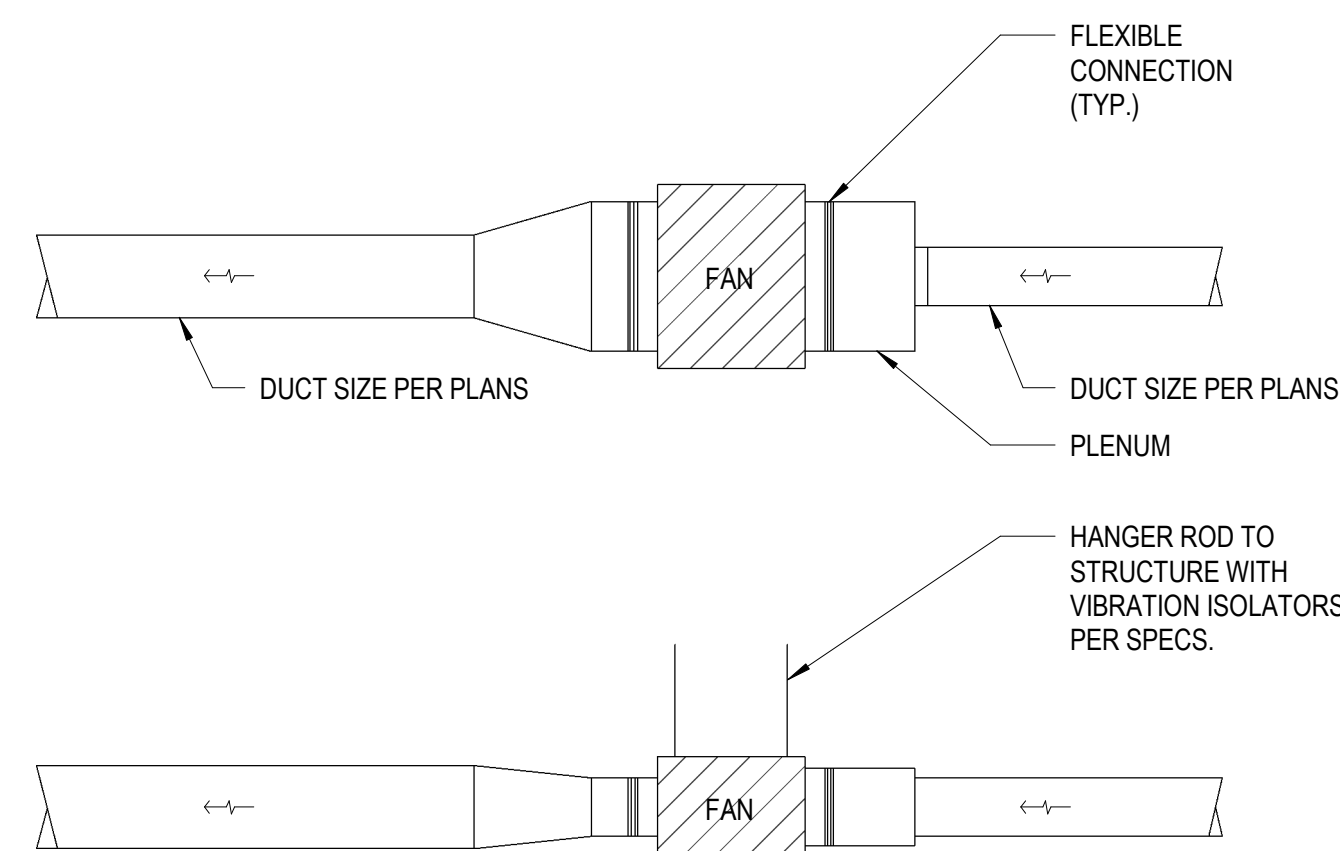


-
- Diagram illustrating the Plan View of a fire protection system unit. The unit is shown with various components and connections:
- ACTUATOR**: Located on the left side of the unit.
 - MAXIMUM 12" LONG PRE-INSULATED FLEX DUCT**: Connected to the actuator.
 - TRANSITION**: Located between the flex duct and the unit.
 - CONTROLLER**: Located on the left side of the unit.
 - FILTER**: Located at the top of the unit.
 - FFB** (Fire Fighting Box): Located inside the unit.
 - BLOWER MOTOR**: Located inside the unit.
 - HW COIL** (Hot Water Coil): Located inside the unit.
 - TRANSITION**: Located on the right side of the unit.
 - FLEXIBLE CONNECTION**: Located on the right side of the unit.
 - H.W. PIPING, MIN. 3/4"**: Located on the right side of the unit.
 - AIR FLOW AND FILTER CHANGE CLEARANCE, MINIMUM 24"**: Indicated by an arrow pointing to the top of the unit.
 - MFR'S AND/OR NEC CODE CLEARANCE TYPICAL**: Indicated by an arrow pointing to the right side of the unit.
 - SUPPLY AIR DUCT SIZE PER PLANS**: Indicated by an arrow pointing to the right side of the unit.
- The diagram shows the internal components and the external connections of the fire protection system unit, including the actuator, controller, filter, blower motor, and air flow paths.

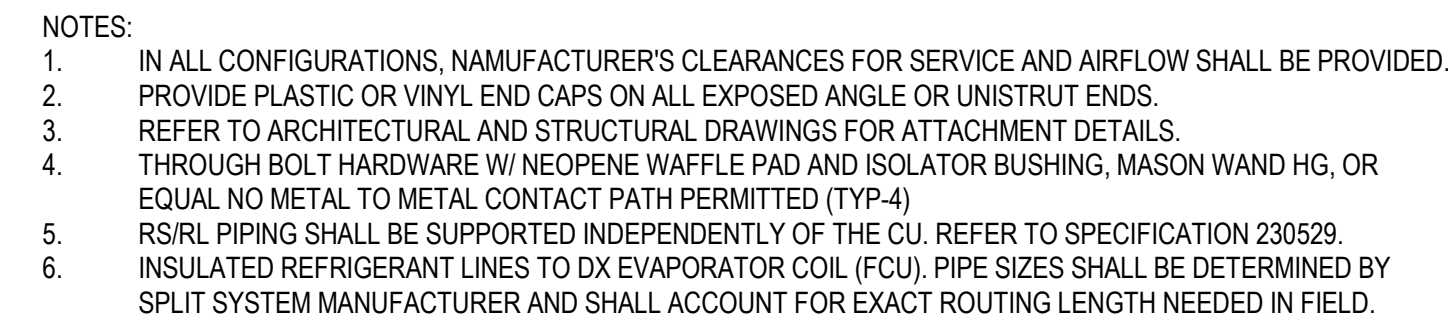
-
- MINIMUM 1-1/2" DUCT DIAMETERS STRAIGHT HARD DUCT
- STAINLESS STEEL WORM DRIVE CLAMPS
- PRIMARY AIR DUCT, SIZE PER BOX SCHEDULE OR PER GENERAL NOTES.
- 12" MAX FLEX DUCT CONNECTION SAME SIZE AS BOX INLET
- FPB
- THREADED GALVANIZED HANGERS RODS TO STRUCTURE (TYP-4)
- VIBRATION ISOLATORS PER SPECS.
- ELEVATION VIEW



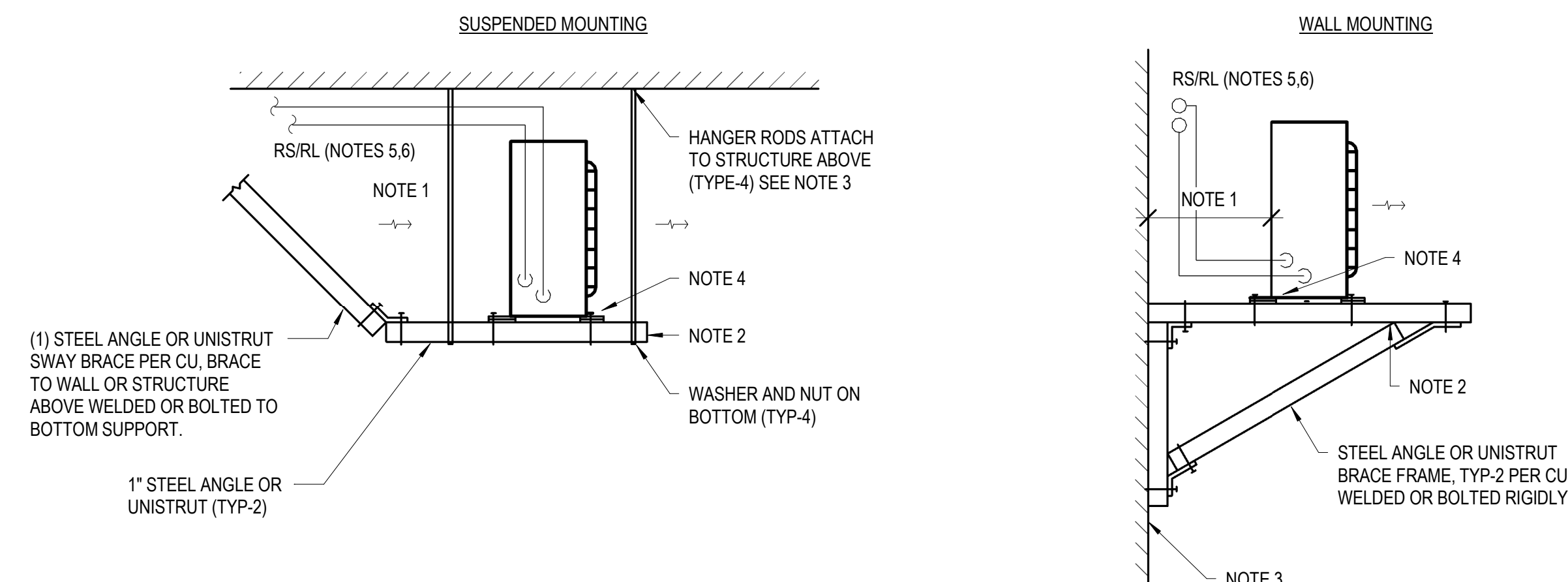
SCALE: NTS



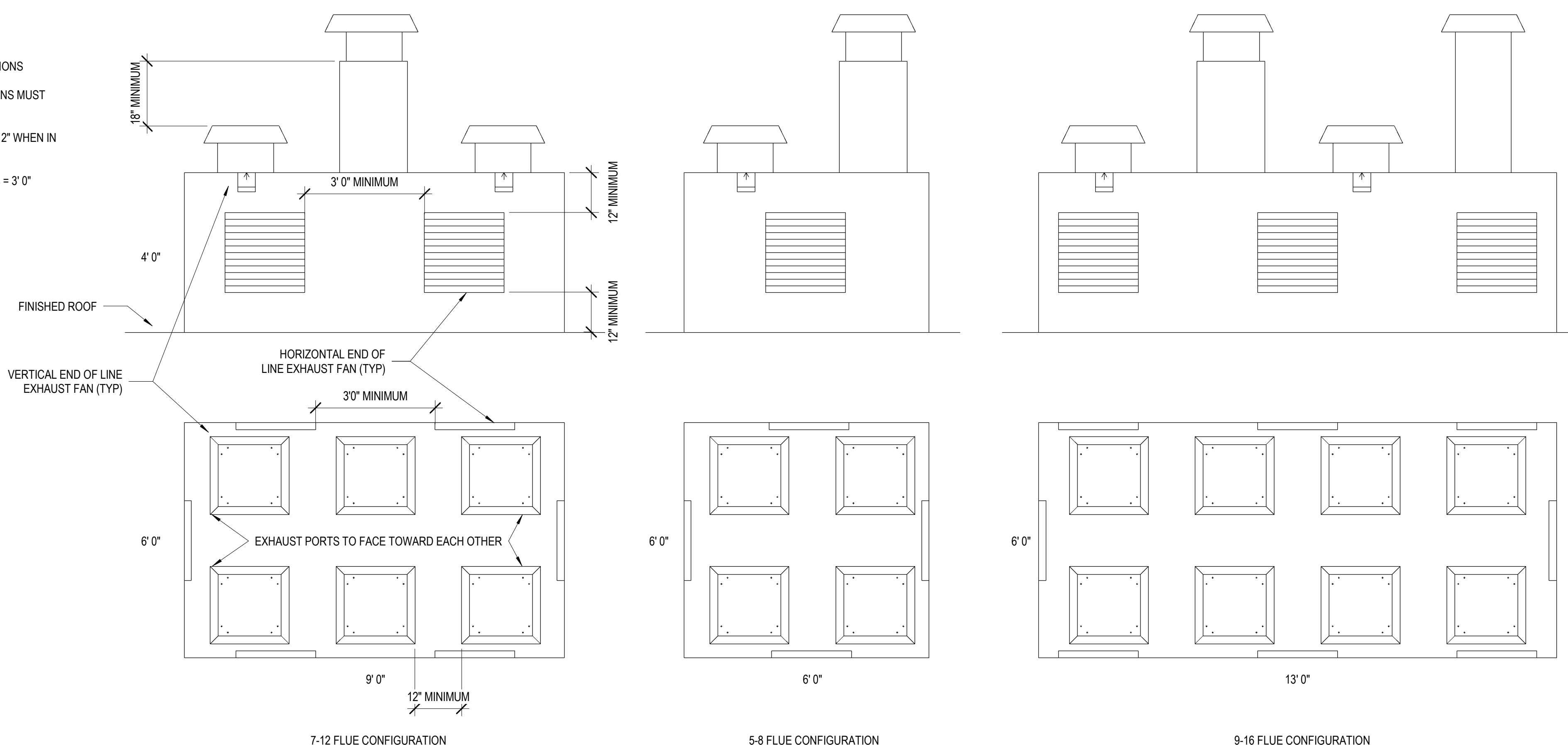
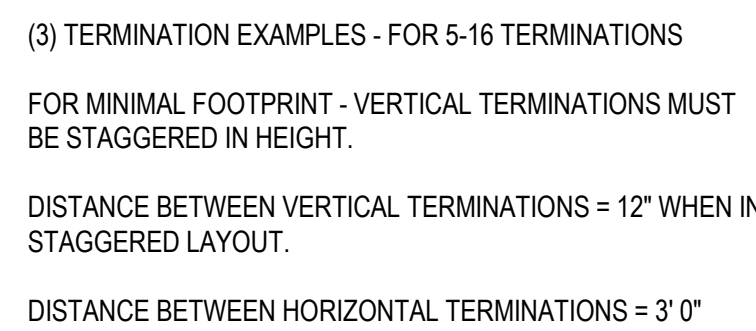
SCALE: NTS



SCALE: NTS



SCALE: NTS



SCALE: NTS

