

Reserved for permit stamp

150 South Jackson St., Suite 800
Seattle, Washington 98104 USA
+1 206 624 8970 olsonkundig.com

Olson Kundig

project:
SOMMET BLANC - ABC
DEER VALLEY, UTAH

MAGNUSSON KLEMENCIC ASSOCIATES

Structural + Civil Engineers
Seattle Chicago
www.mka.com
206.292.1200

principal architect _____
project manager _____
drawn by _____
checked by _____
job no. 20052
date 05/17/2024
revisions:

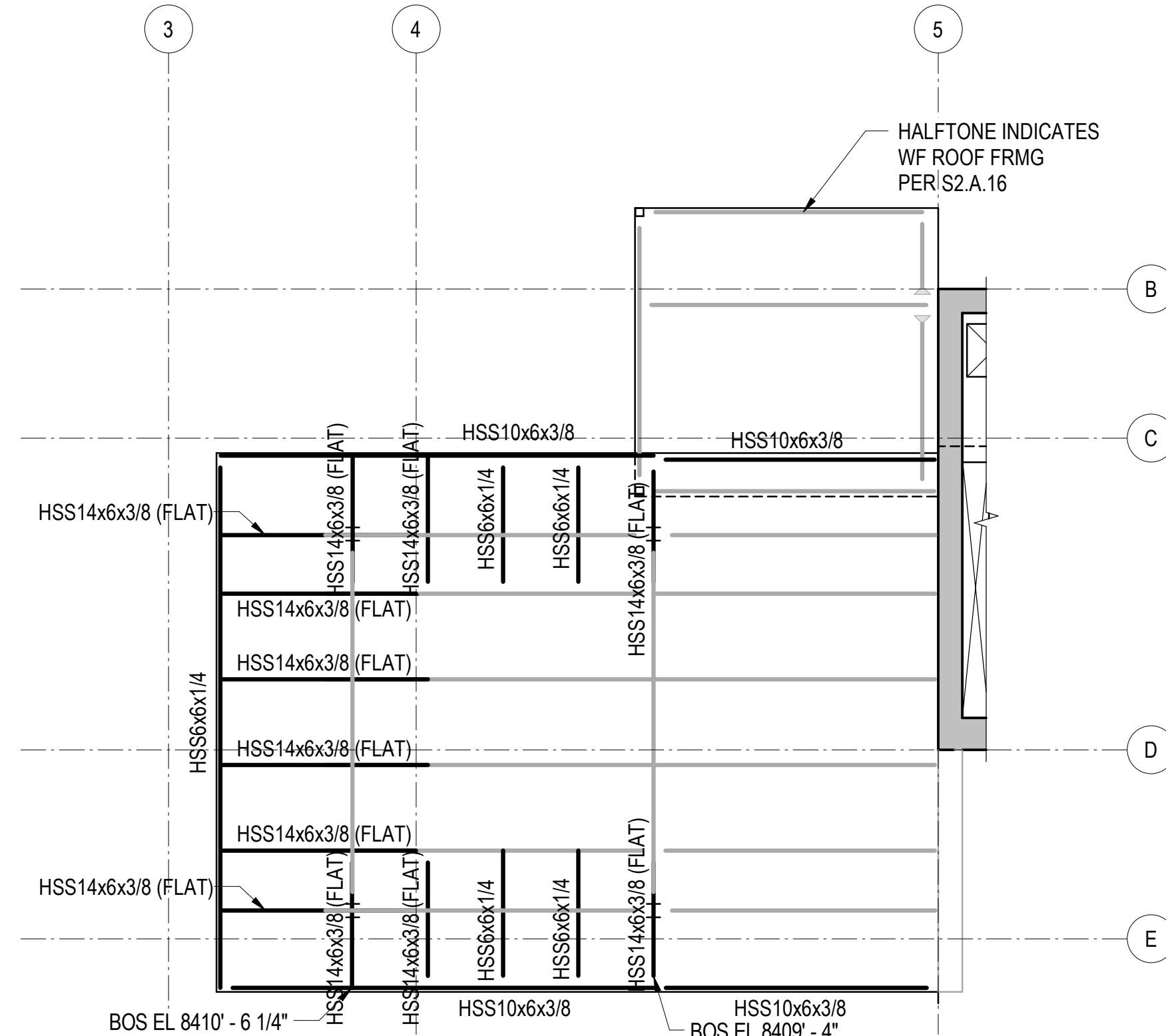
no. date by

IFC SET 2 OF 3

05/17/2024

TOWER A PARTIAL PLANS

S2.A.50



REFERENCE DRAWINGS

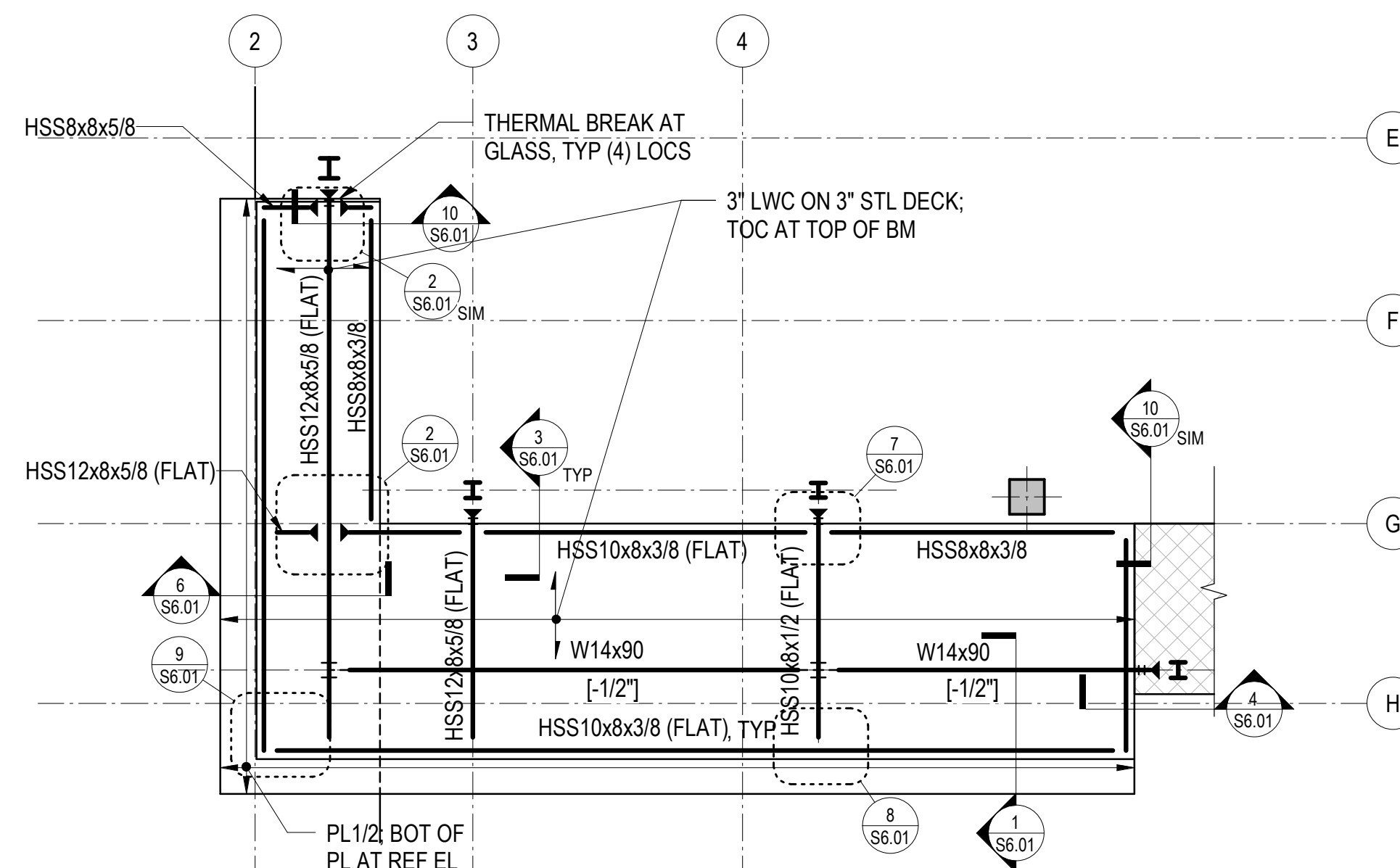
- S0.XX DRAWING INDEX, ABBREVIATIONS, LEGENDS, GENERAL NOTES
- S1.XX LOAD DIAGRAMS
- S2.XX PLANS
- S3.XX ELEVATIONS
- S4.XX TYPICAL DETAILS AND SCHEDULES
- S5.XX CONCRETE SECTIONS AND DETAILS
- S6.XX STEEL SECTIONS AND DETAILS

NOTES

- REFER TO CORRESPONDING ROOF FRAMING PLAN FOR ADDITIONAL SHEET NOTES.
- FRAMING PLAN INDICATES HSS FRAMING THAT IS EMBEDDED WITHIN THE SLAB ON STEEL DECK THICKNESS.
- BOTTOM OF STEEL IS AT THE BOTTOM OF SLAB ON STEEL DECK.

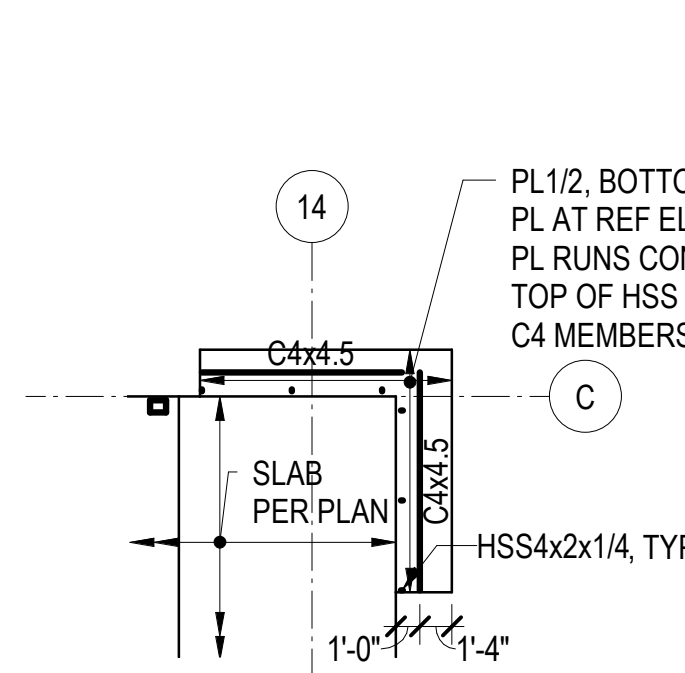
7 PARTIAL PLAN - LEVEL 6 EMBEDDED HSS ROOF FRAMING

1/8" = 1'-0"



11 PARTIAL PLAN - TYPE 2A BALCONY

1/8" = 1'-0"

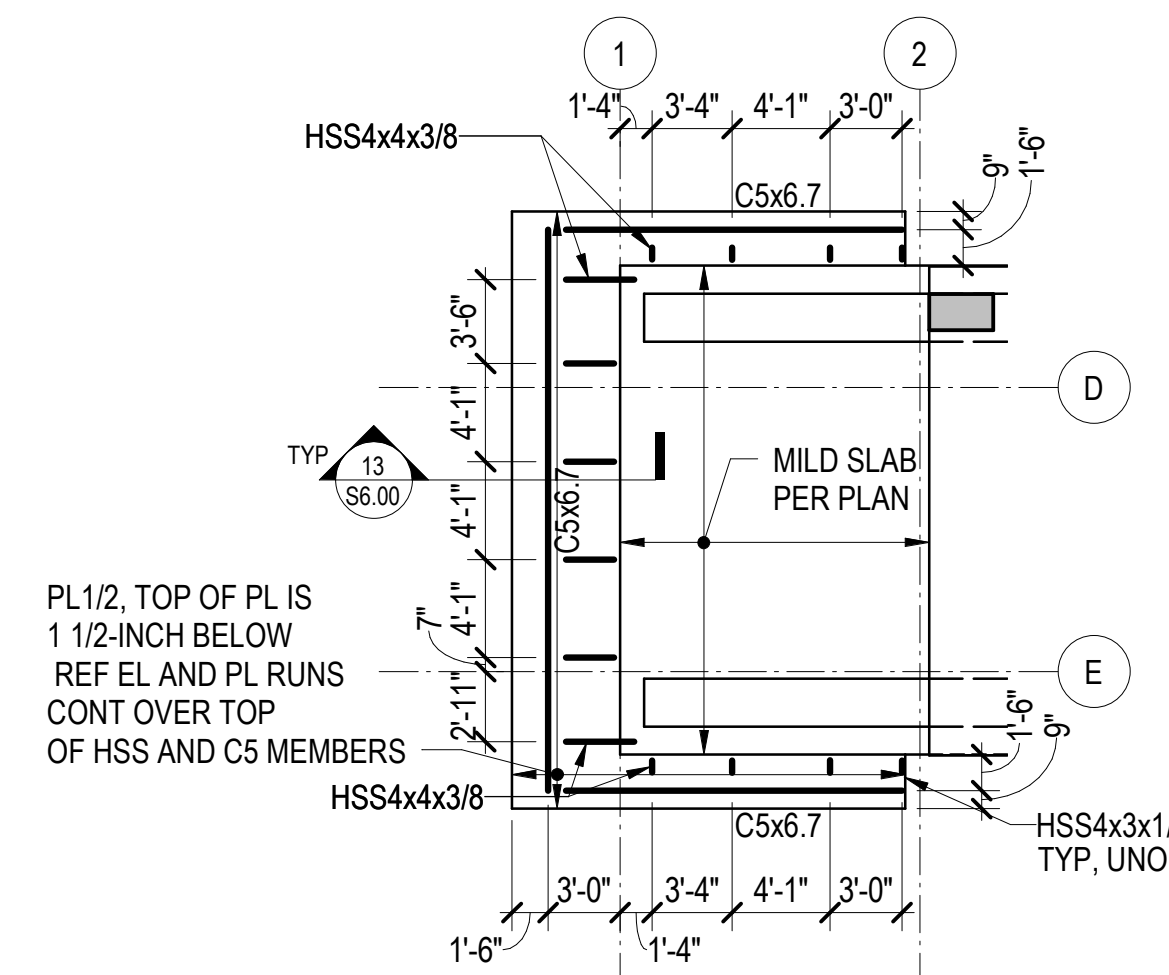


NOTES

- REFERENCE FLOOR ELEVATIONS ARE:
TOWER A LEVEL 4: 8383'-0"
TOWER A LEVEL 6: 8407'-6"
- TOP OF STEEL IS AT THE REFERENCE FLOOR ELEVATION UNLESS NOTED OTHERWISE.
- SEE ARCHITECTURAL DETAILS FOR ADDITIONAL INFORMATION.

17 PARTIAL PLAN - TOWER A EAST SUNSHADES

1/8" = 1'-0"

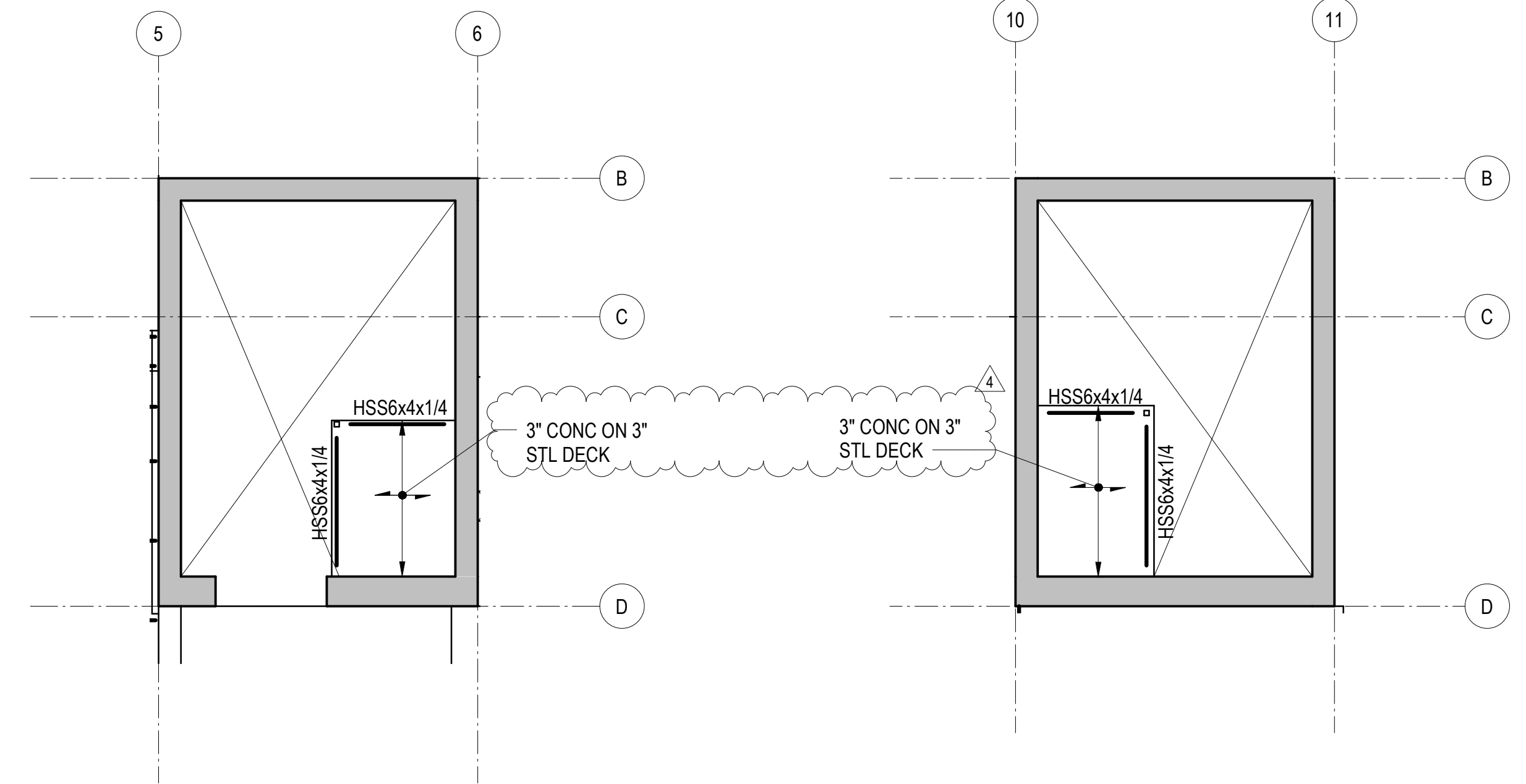


NOTES

- REFERENCE FLOOR ELEVATIONS ARE:
TOWER A LEVEL 3: 8371'-0"
TOWER A LEVEL 5: 8393'-6"
- SEE ARCHITECTURAL DETAILS FOR ADDITIONAL INFORMATION.

18 PARTIAL PLAN - TOWER A SUNSHADES

1/8" = 1'-0"

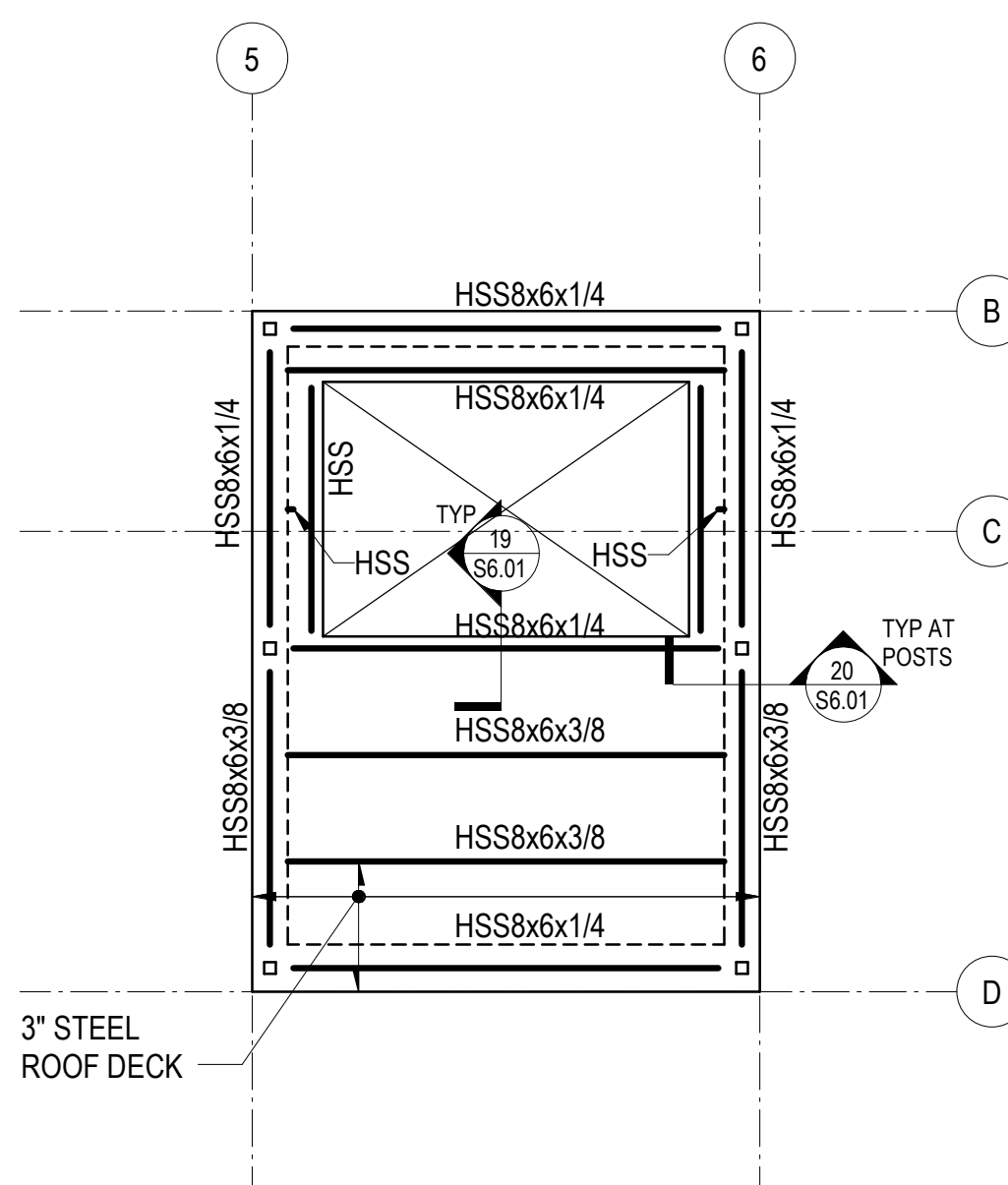


NOTES

- REFERENCE FLOOR ELEVATION IS 8410'-10". REFERENCE TOP OF STRUCTURAL STEEL IS 6-INCHES BELOW THE REFERENCE FLOOR ELEVATION, TYPICAL UNLESS NOTED OTHERWISE.
- STRUCTURAL SLAB IS 3-INCHES OF CONCRETE ON 3-INCH COMPOSITE STEEL DECK UNLESS NOTED OTHERWISE. REINFORCE WITH WWR 6x6-W2.9xW2.9. SEE TYPICAL SLAB ON STEEL DECK DETAILS FOR REINFORCING AND OTHER INFORMATION. REINFORCING SHOWN ON THE PLAN AND IN THE TYPICAL DETAILS IS IN ADDITION TO THIS REINFORCING.

9 PARTIAL PLAN - WEST CORE ELEV OVERRUN

1/8" = 1'-0"



NOTES

- REFERENCE FLOOR ELEVATION IS 8423'-3". REFERENCE TOP OF STRUCTURAL STEEL IS AT THE REFERENCE FLOOR ELEVATION, TYPICAL UNLESS NOTED OTHERWISE.
- ROOF DECK IS MINIMUM 3-INCH x 20 GAUGE STEEL DECKING. TOP OF DECK IS AT TOP OF STEEL UNLESS NOTED OTHERWISE.

19 PARTIAL PLAN - TOP OF WEST CORE

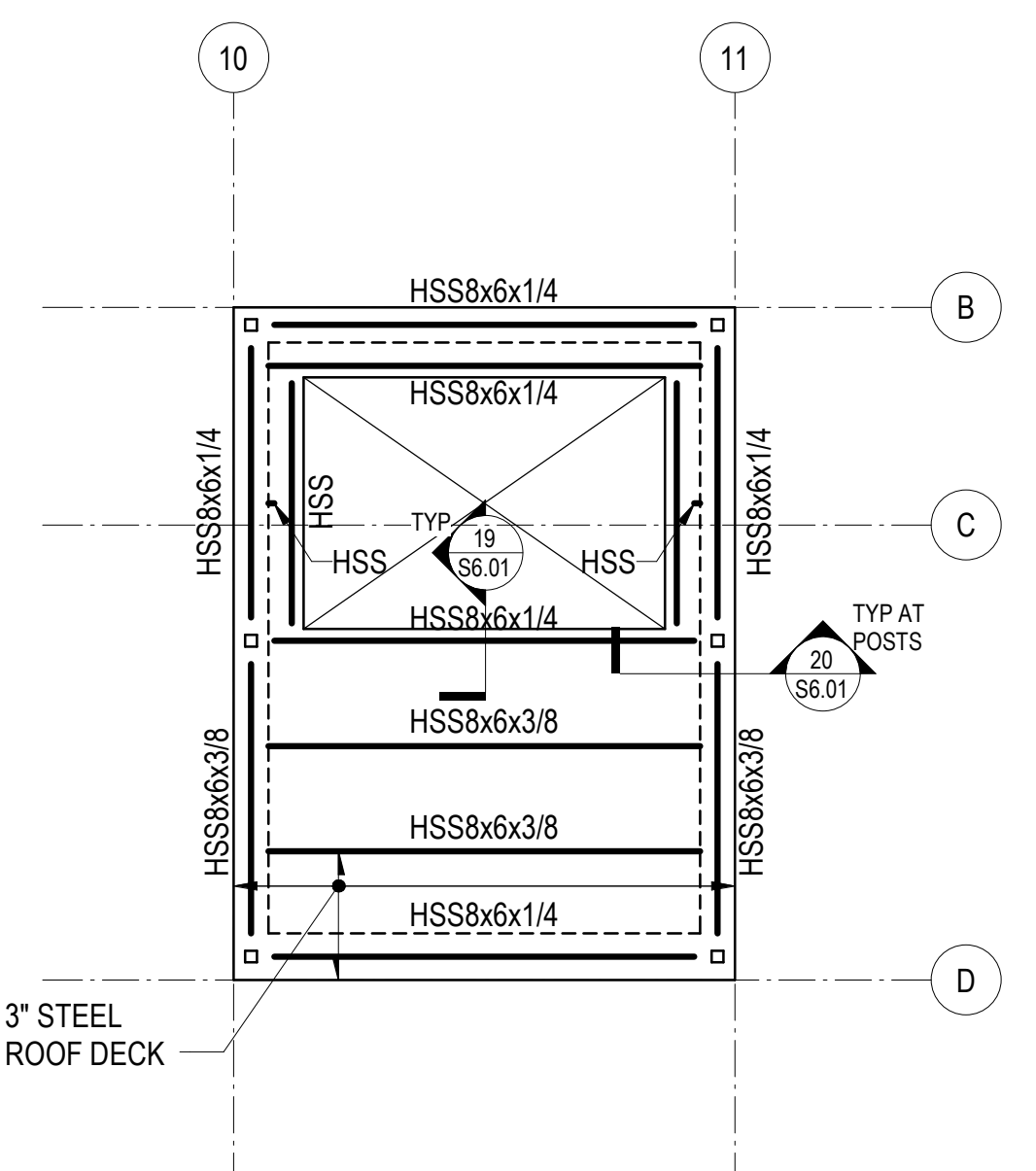
1/8" = 1'-0"

NOTES

- REFERENCE FLOOR ELEVATION IS 8423'-8". REFERENCE TOP OF STRUCTURAL STEEL IS 6-INCHES BELOW THE REFERENCE FLOOR ELEVATION, TYPICAL UNLESS NOTED OTHERWISE.
- STRUCTURAL SLAB IS 3-INCHES OF CONCRETE ON 3-INCH COMPOSITE STEEL DECK UNLESS NOTED OTHERWISE. REINFORCE WITH WWR 6x6-W2.9xW2.9. SEE TYPICAL SLAB ON STEEL DECK DETAILS FOR REINFORCING AND OTHER INFORMATION. REINFORCING SHOWN ON THE PLAN AND IN THE TYPICAL DETAILS IS IN ADDITION TO THIS REINFORCING.

10 PARTIAL PLAN - EAST CORE ELEV OVERRUN

1/8" = 1'-0"

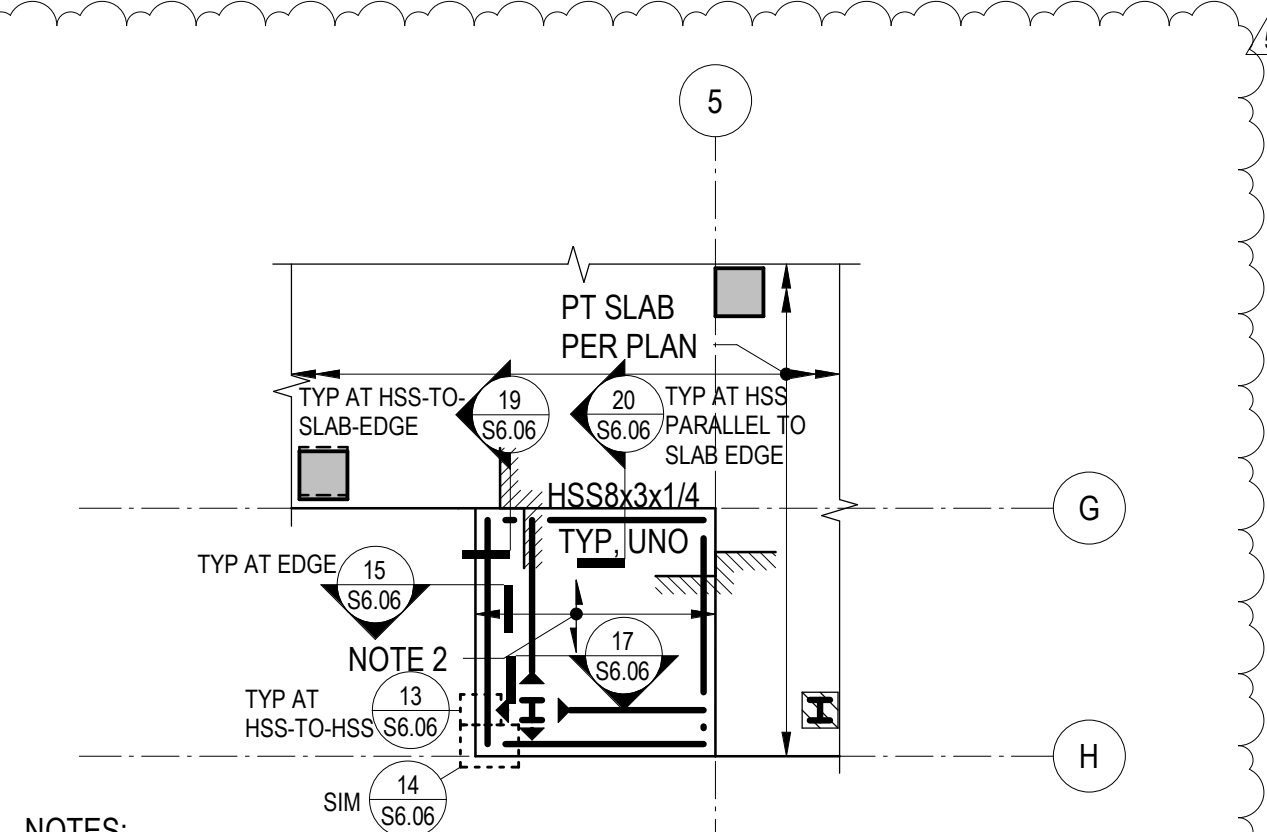


NOTES

- REFERENCE FLOOR ELEVATION IS 8429'-9". REFERENCE TOP OF STRUCTURAL STEEL IS AT THE REFERENCE FLOOR ELEVATION, TYPICAL UNLESS NOTED OTHERWISE.
- ROOF DECK IS MINIMUM 3-INCH x 20 GAUGE STEEL DECKING. TOP OF DECK IS AT TOP OF STEEL UNLESS NOTED OTHERWISE.

20 PARTIAL PLAN - TOP OF EAST CORE

1/8" = 1'-0"

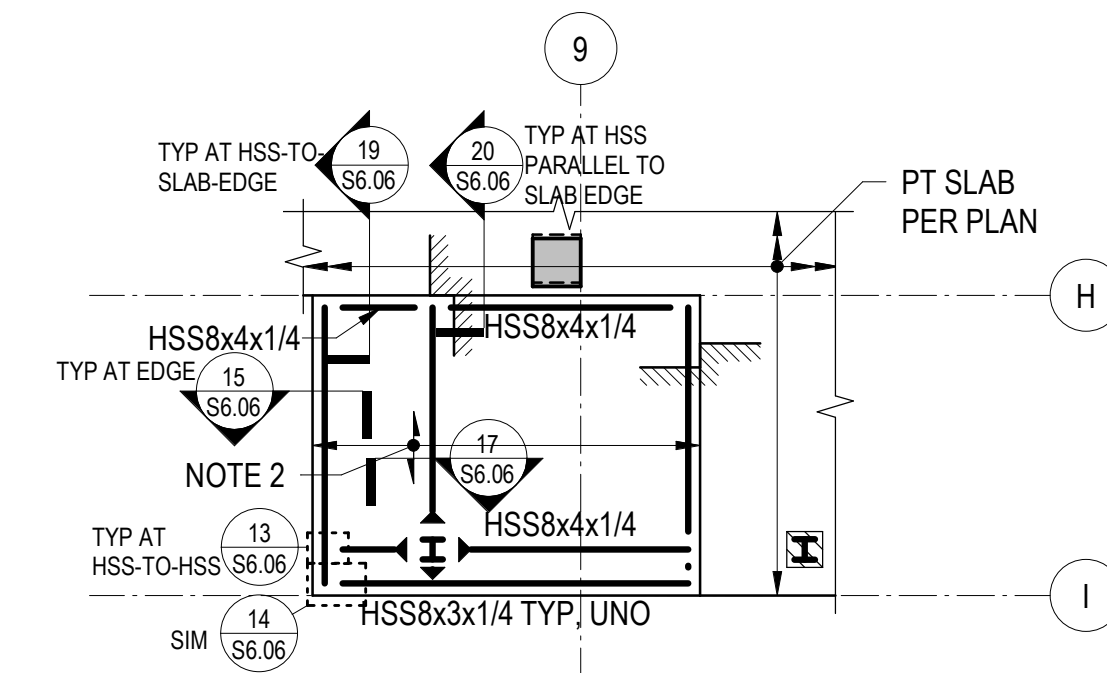


NOTES

- SEE RELEVANT PLANS FOR REFERENCE ELEVATION. TOP OF STEEL IS AT BOTTOM OF DECK UNLESS NOTED OTHERWISE.
- STRUCTURAL SLAB IS 3-INCHES OF CONCRETE ON 3-INCH COMPOSITE STEEL DECK UNLESS NOTED OTHERWISE. REINFORCE WITH WWR 6x6-W2.9xW2.9. SEE TYPICAL SLAB ON STEEL DECK DETAILS FOR REINFORCING AND OTHER INFORMATION. REINFORCING SHOWN ON THE PLAN AND IN THE TYPICAL DETAILS IS IN ADDITION TO THIS REINFORCING.

6 PARTIAL PLAN - TYPE 1A BALCONY

1/8" = 1'-0"

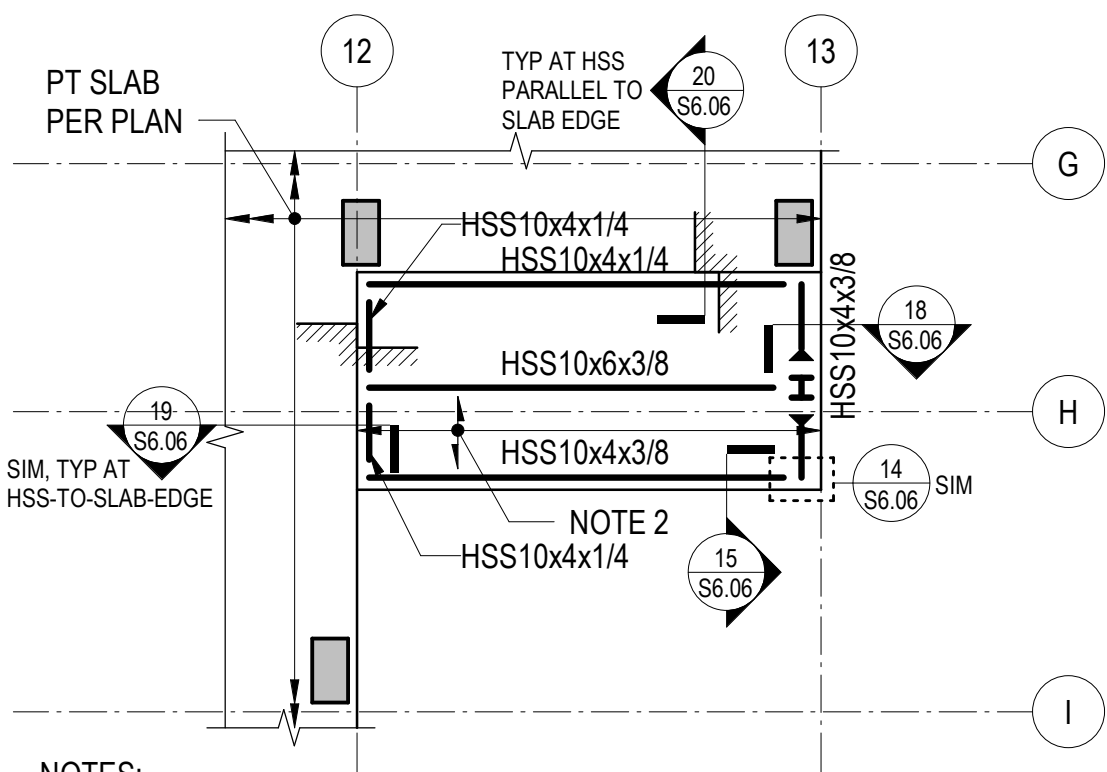


NOTES

- SEE RELEVANT PLANS FOR REFERENCE ELEVATION. TOP OF STEEL IS AT BOTTOM OF DECK UNLESS NOTED OTHERWISE.
- STRUCTURAL SLAB IS 3-INCHES OF CONCRETE ON 3-INCH COMPOSITE STEEL DECK UNLESS NOTED OTHERWISE. REINFORCE WITH WWR 6x6-W2.9xW2.9. SEE TYPICAL SLAB ON STEEL DECK DETAILS FOR REINFORCING AND OTHER INFORMATION. REINFORCING SHOWN ON THE PLAN AND IN THE TYPICAL DETAILS IS IN ADDITION TO THIS REINFORCING.

11 PARTIAL PLAN - TYPE 2A BALCONY

1/8" = 1'-0"



NOTES

- SEE RELEVANT PLANS FOR REFERENCE ELEVATION. TOP OF STEEL IS AT BOTTOM OF DECK UNLESS NOTED OTHERWISE.
- STRUCTURAL SLAB IS 3-INCHES OF CONCRETE ON 3-INCH COMPOSITE STEEL DECK UNLESS NOTED OTHERWISE. REINFORCE WITH WWR 6x6-W2.9xW2.9. SEE TYPICAL SLAB ON STEEL DECK DETAILS FOR REINFORCING AND OTHER INFORMATION. REINFORCING SHOWN ON THE PLAN AND IN THE TYPICAL DETAILS IS IN ADDITION TO THIS REINFORCING.

16 PARTIAL PLAN - TYPE 3A BALCONY

1/8" = 1'-0"