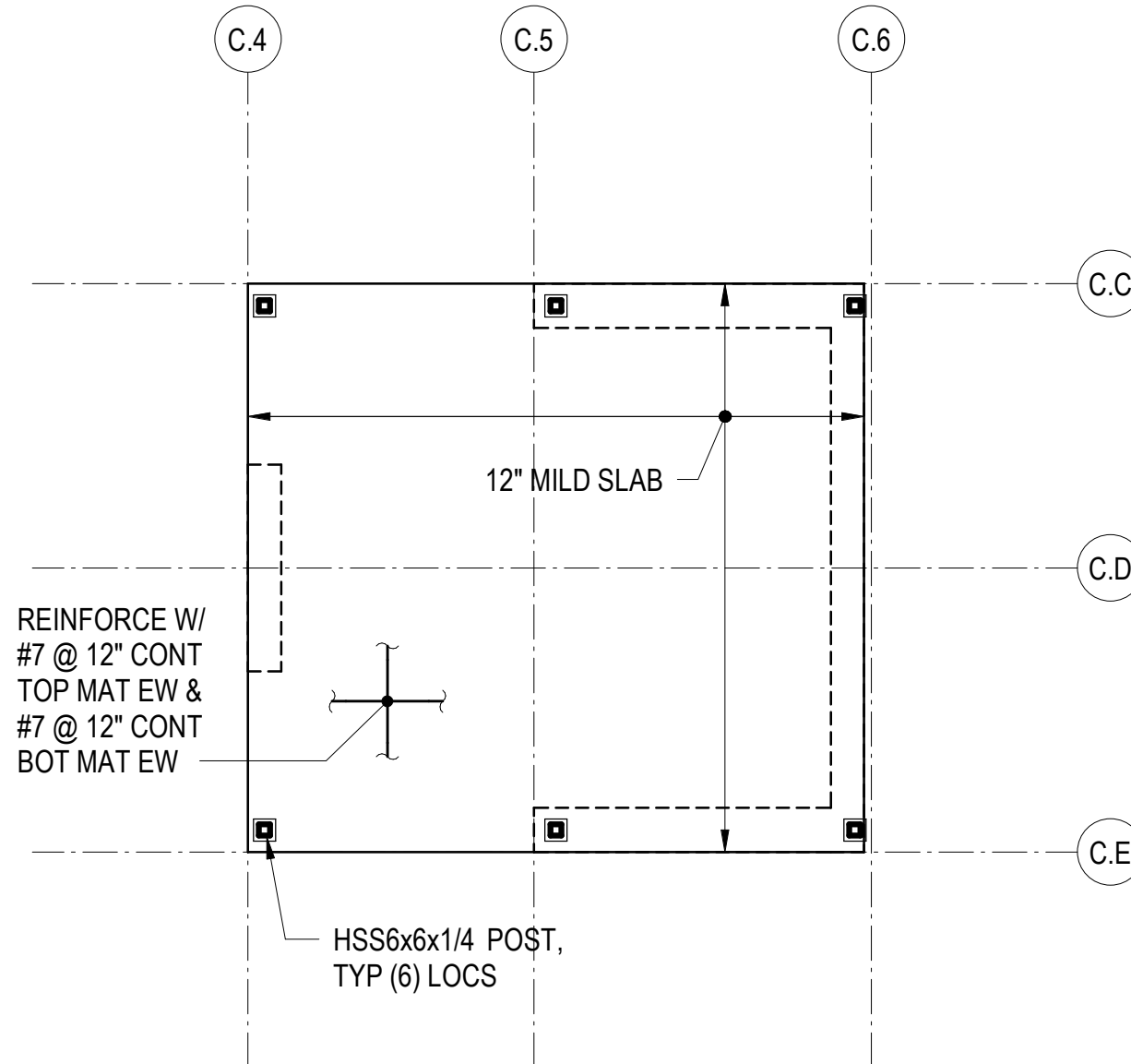


NOTES:

- SEE RELEVANT PLANS FOR REFERENCE ELEVATION. TOP OF STEEL IS AT BOTTOM OF DECK UNLESS NOTED OTHERWISE.
- STRUCTURAL SLAB IS 3-INCHES OF CONCRETE ON 3-INCH COMPOSITE STEEL DECK UNLESS NOTED OTHERWISE. REINFORCE WITH WWR 6x6-W2.9xW2.9. SEE TYPICAL SLAB ON STEEL DECK DETAILS FOR REINFORCING AND OTHER INFORMATION. REINFORCING SHOWN ON THE PLAN AND IN THE TYPICAL DETAILS IS IN ADDITION TO THIS REINFORCING.

2 PARTIAL PLAN - TYPE 4 BALCONY

1/8" = 1'-0"

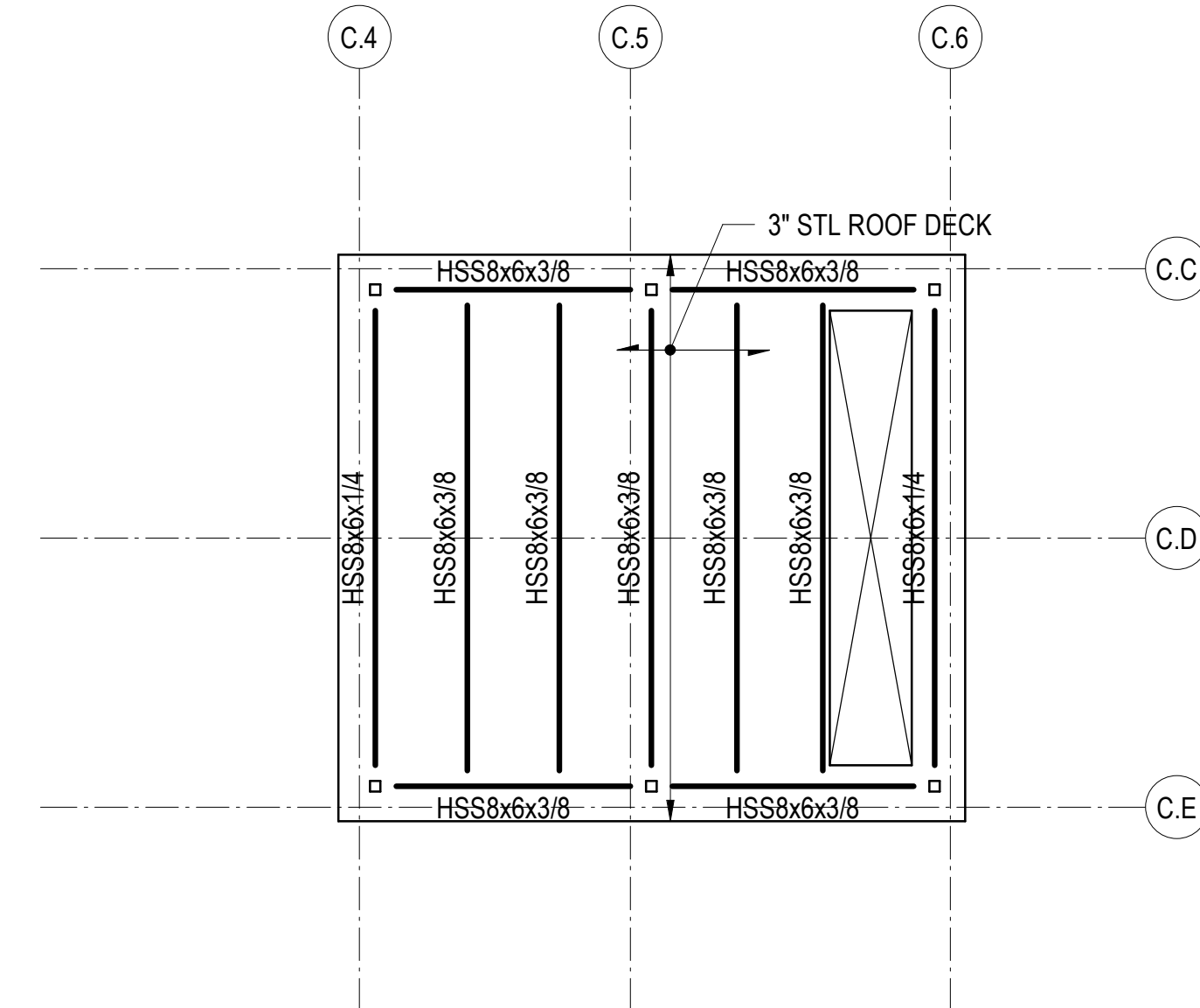


NOTES:

- REFERENCE FLOOR ELEVATION IS 8482'-2". TOP OF CONCRETE SLAB IS AT THE REFERENCE ELEVATION UNLESS NOTED OTHERWISE. SEE ARCHITECTURAL DRAWINGS FOR DRAINAGE SLOPES NOT SHOWN.
- THE STRUCTURAL SLAB IS A 12-INCH THICK MILD TWO-WAY SLAB UNLESS NOTED OTHERWISE. SEE THE TYPICAL MILD SLAB DETAILS.
- COORDINATE LOCATION OF ALL EMBEDS WITH MECHANICAL, ELECTRICAL, PLUMBING, AND EXTERIOR WALL SYSTEMS PRIOR TO CASTING THE SLAB.
- SEE ARCHITECTURAL, MECHANICAL, PLUMBING, ELECTRICAL, AND OTHER DISCIPLINES DRAWINGS FOR OPENING SIZES AND LOCATIONS NOT SHOWN ON PLAN. SEE "TYPICAL OPENINGS AND EMBEDMENTS IN CONCRETE" DETAILS FOR OPENING PLACEMENT CRITERIA. NOTIFY THE STRUCTURAL ENGINEER OF ANY OPENINGS NOT SHOWN ON THE STRUCTURAL DRAWINGS FOR WHICH THE TYPICAL DETAILS DO NOT APPLY.
- REFERENCE ALL CONSTRUCTION DOCUMENTS FOR SIZE, EXTENT, AND LOCATION OF CONCRETE CURBS, HOUSEKEEPING PADS, CMU WALLS, PLANTER WALLS, BOLLARDS, AND EDGE ANGLES. REINFORCE PER THE TYPICAL DETAILS.

8 PARTIAL FRAMING PLAN - ELEVATOR OVERRUN

1/8" = 1'-0"

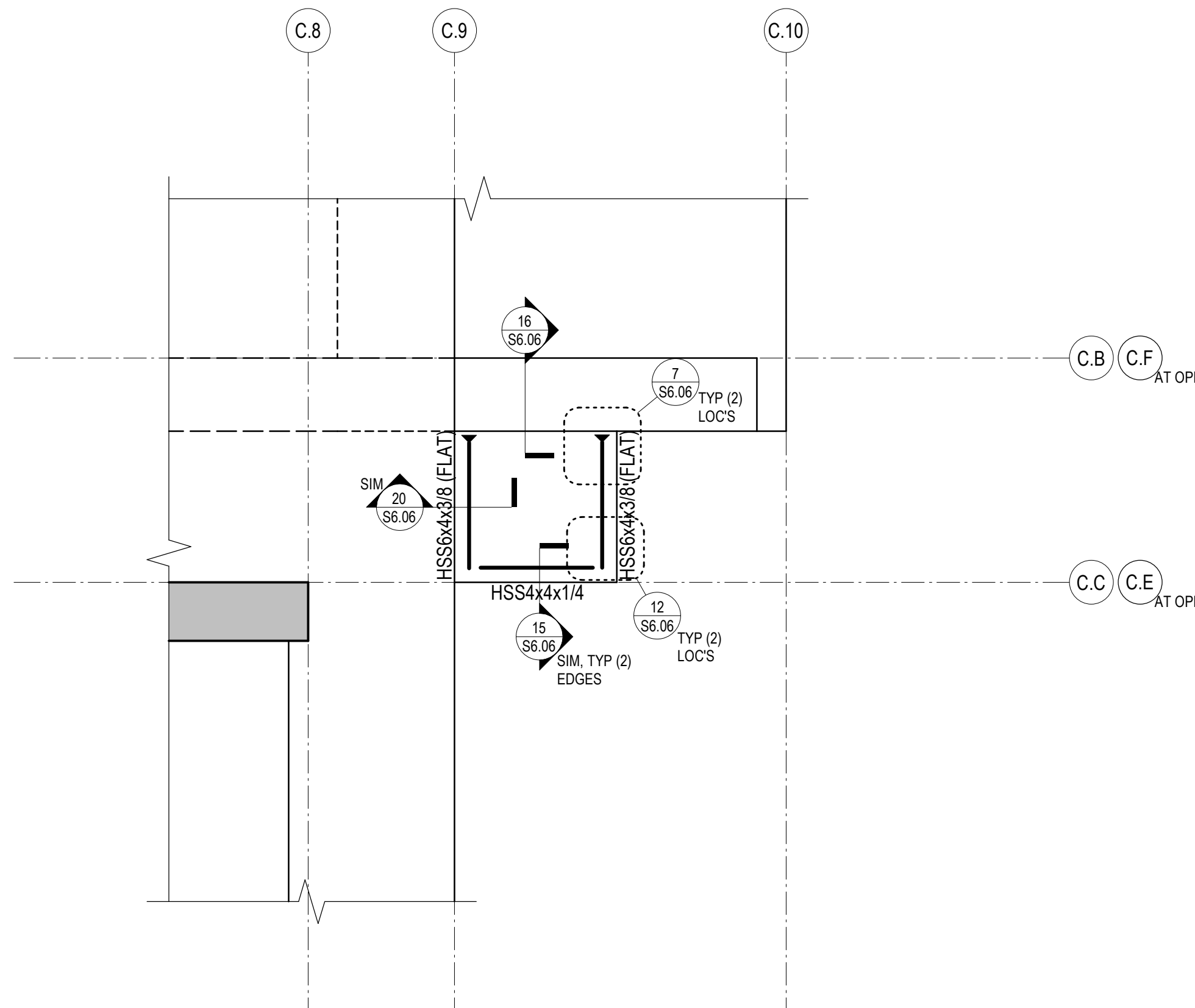


NOTES:

- REFERENCE FLOOR ELEVATION IS 8485'-3". REFERENCE TOP OF STRUCTURAL STEEL IS 3-INCHES BELOW THE REFERENCE FLOOR ELEVATION, TYPICAL UNLESS NOTED OTHERWISE.
- ROOF DECK IS MINIMUM 3-INCH x 20 GAUGE STEEL DECKING. DECKING IS TO BE INSTALLED IN MINIMUM THREE SPAN CONDITIONS WHERE POSSIBLE.

9 PARTIAL PLAN - TOP OF CORE

1/8" = 1'-0"

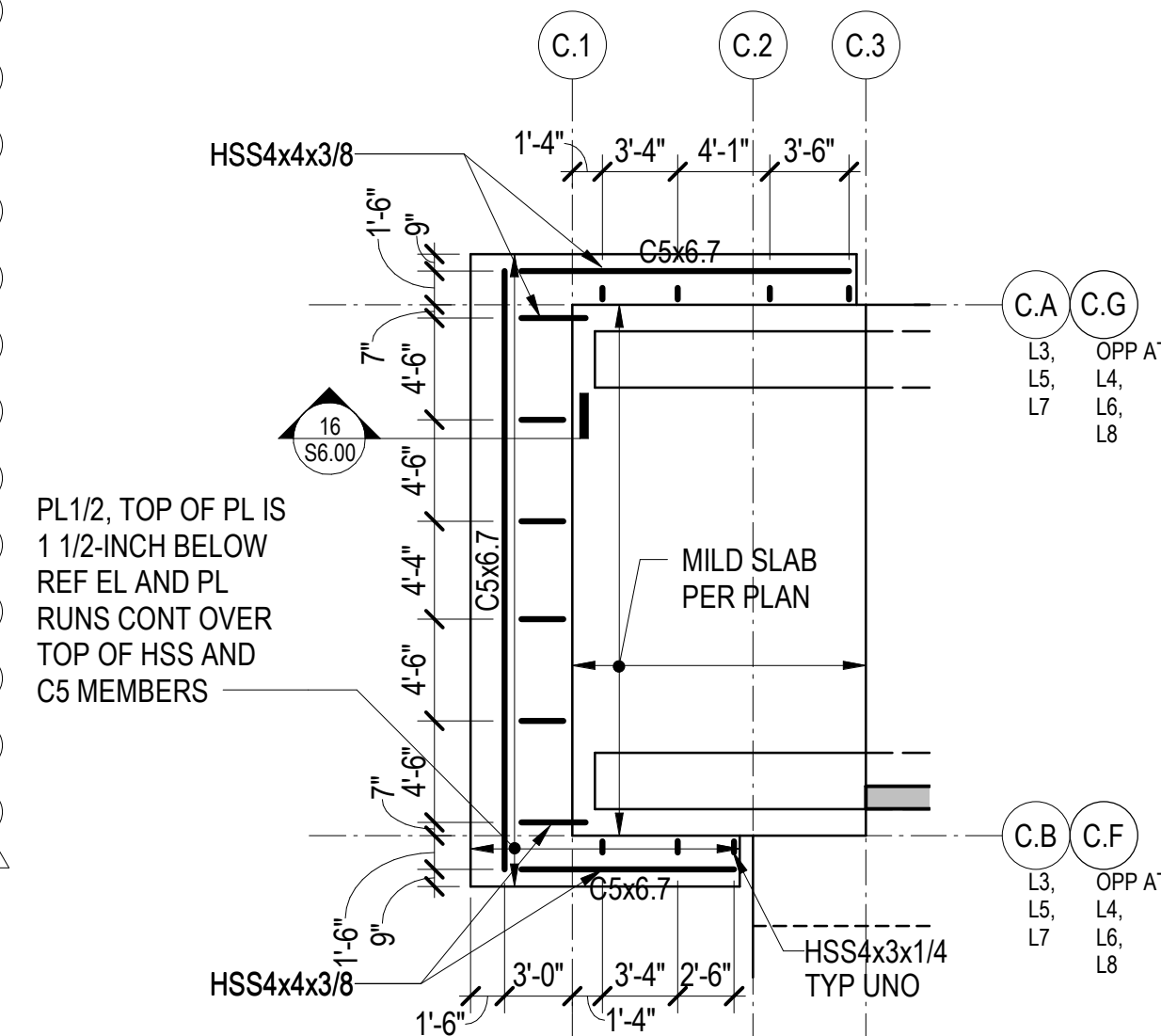


NOTES:

- SEE RELEVANT PLANS FOR REFERENCE ELEVATION. TOP OF STEEL IS AT BOTTOM OF DECK UNLESS NOTED OTHERWISE.
- STRUCTURAL SLAB IS 3-INCHES OF CONCRETE ON 3-INCH COMPOSITE STEEL DECK UNLESS NOTED OTHERWISE. REINFORCE WITH WWR 6x6-W2.9xW2.9. SEE TYPICAL SLAB ON STEEL DECK DETAILS FOR REINFORCING AND OTHER INFORMATION. REINFORCING SHOWN ON THE PLAN AND IN THE TYPICAL DETAILS IS IN ADDITION TO THIS REINFORCING.

11 PARTIAL PLAN - TYPE 5 BALCONY

1/4" = 1'-0"



NOTES:

- REFERENCE FLOOR ELEVATIONS ARE:
TOWER C LEVEL 3: 8402'-6"
TOWER C LEVEL 4: 8414'-6"
TOWER C LEVEL 5: 8426'-6"
TOWER C LEVEL 6: 8438'-6"
TOWER C LEVEL 7: 8450'-6"
TOWER C LEVEL 8: 8463'-0"
- SEE ARCHITECTURAL DETAILS FOR ADDITIONAL INFORMATION.

18 PARTIAL PLAN - TOWER C SUNSHADES

1/8" = 1'-0"

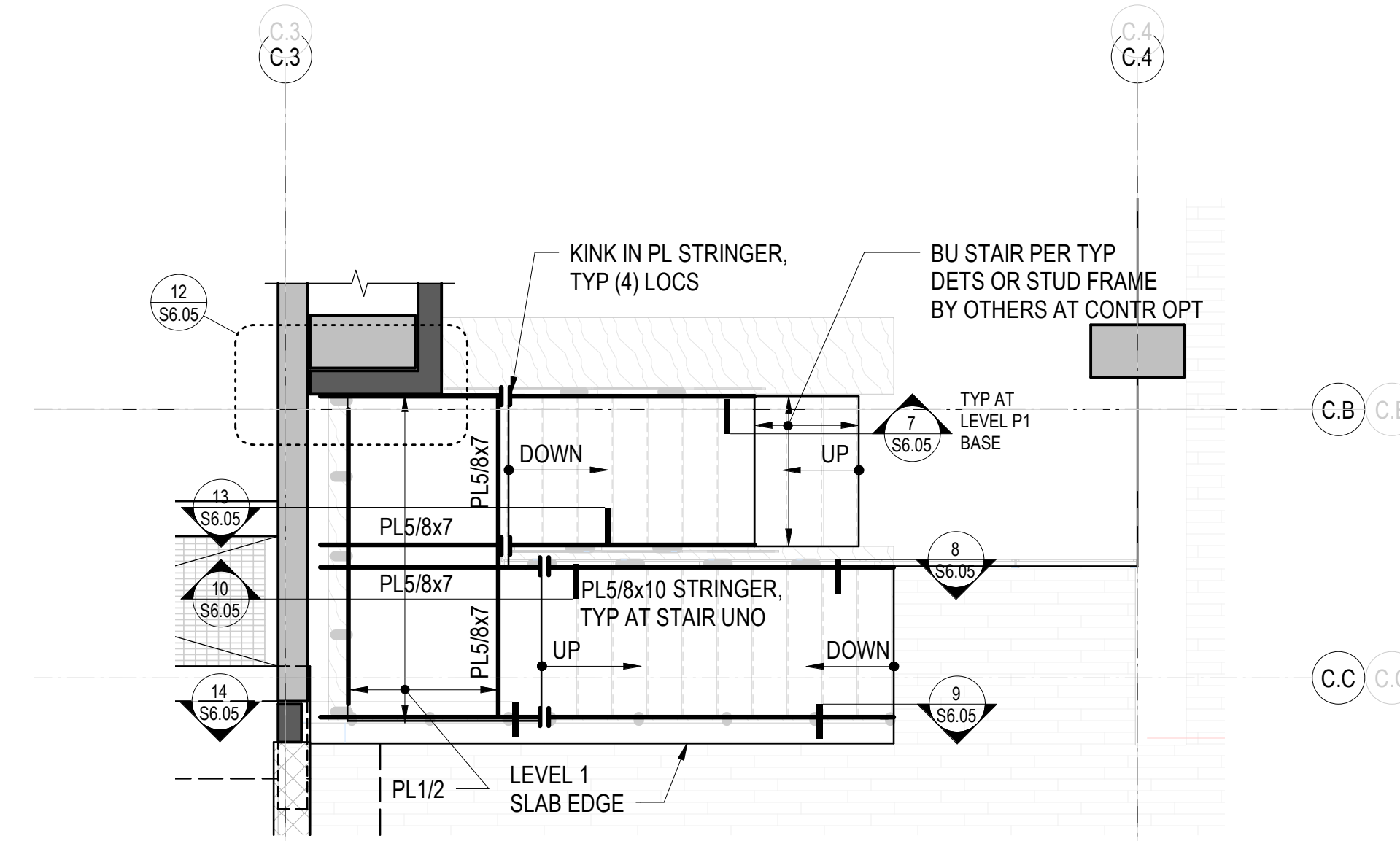


NOTES:

- REFERENCE ELEVATION IS 8374'-6". SEE SECTIONS FOR ADDITIONAL INFORMATION.
- COORDINATE ALL DIMENSIONS WITH ARCHITECTURE.

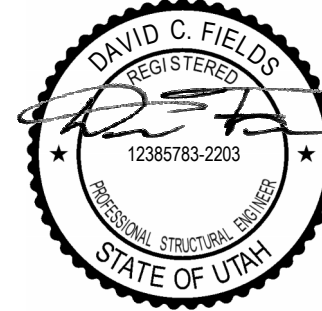
15 PARTIAL PLAN - TOWER C ENTRY CANOPY

1/8" = 1'-0"



20 PARTIAL PLAN - TOWER C FUTURE STAIR

1/4" = 1'-0"



Reserved for permit stamp

150 South Jackson St., Suite 800
Seattle, Washington 98104 USA
+1 206 624 8700 olsonkundig.com

Olson Kundig

PROJECT
SOMMET BLANC - ABC
DEER VALLEY, UTAH

MAGNUSSON KLEMENCIC ASSOCIATES

Structural + Civil Engineers

Seattle Chicago
www.mka.com
206.292.1200

principal architect _____
project manager _____
drawn by _____

checked by _____
job no. 20052
date 05/17/2024

revisions:

no.	date	by
7	1/28/2025	ASI-007.1
5	01/07/2025	ASI-007
1	09/17/2024	IFC.2
	04/08/2024	IFC SET 1 OF 3
	11/18/2022	95% CD

IFC SET 2 OF 3

05/17/2024

TOWER C PARTIAL PLANS

S2.C.50