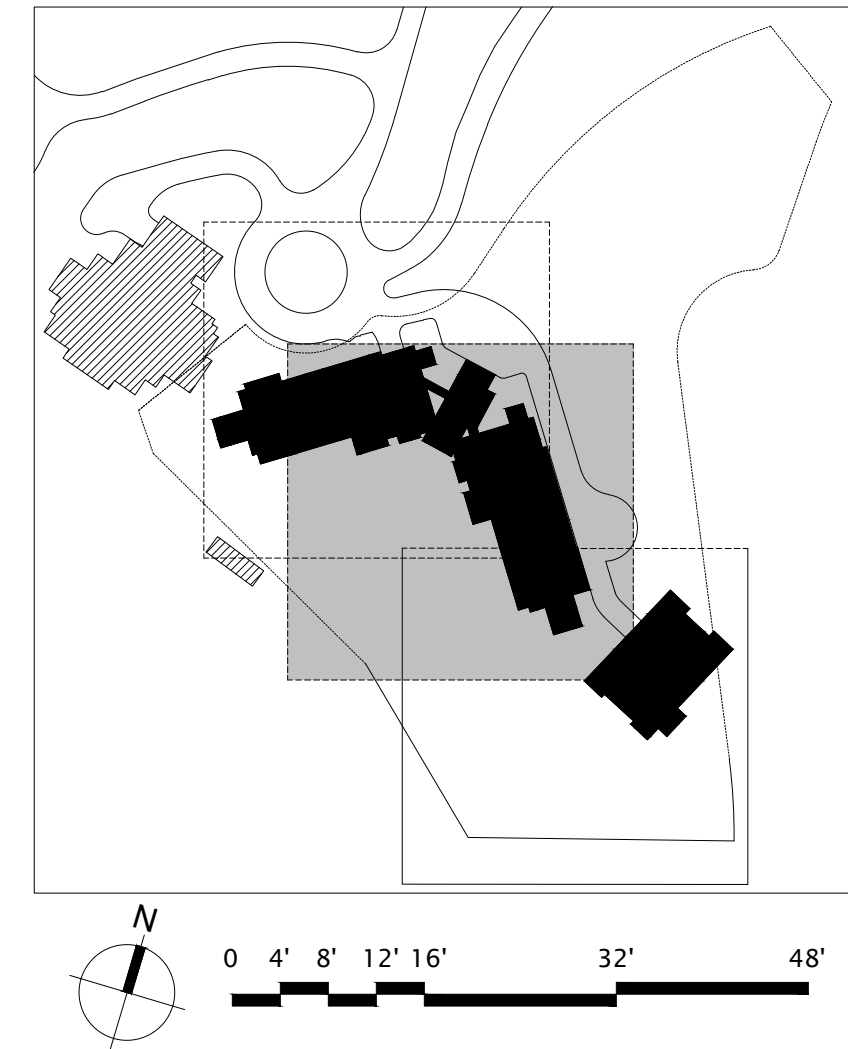


IRRIGATION SCHEDULE		
SYMBOL	MANUFACTURER/MODEL/DESCRIPTION	
	RAIN BIRD R-VAN14 RD-04-SAM-P45-NP TURF ROTARY, 8'-14" 45-270 DEGREES AND 360 DEGREES HAND ADJUSTABLE	
	RAIN BIRD R-VAN18 RD-04-SAM-P45-NP TURF ROTARY, 15'-18" 45-270 DEGREES AND 360 DEGREES HAND ADJUSTABLE	
	RAIN BIRD R-VAN24 RD-04-SAM-P45-NP TURF ROTARY, 17'-24" 45-270 DEGREES AND 360 DEGREES HAND ADJUSTABLE	
	RAIN BIRD RWS-M-B-C-P W/ RWS-SOCK 1401 MINI ROOT WATERING SYSTEM WITH 4" DIAMETER X 18" LONG WITH LOCKING GRATE, SEM-RIGID MESH TUBE AND RAIN BIRD 1401 0.25 GPM GPM BUBBLER AS INDICATED WITH CHECK VALVE, PURPLE GRATE, AND SAND SOCK FOR SANDY SOIL	
SYMBOL	MANUFACTURER/MODEL/DESCRIPTION	
	REMOTE CONTROL DRP VALVE RAINBIRD 1000V NPT W/ 3/8PSI PRESSURE REGULATOR AND 30 MESH WYE STRAINER	
	PVC TO POLY TUBING PIPE TRANSITION POINT FROM PVC LATERAL TO DRIP TUBING	
	RAIN BIRD ARV50 1/2" AIR RELIEF VALVE, MADE OF QUALITY RUST-PROOF MATERIALS, WITH A 6" DRIP VALVE BOX (SEE 7/8B EMITTER BOX). USE WITH INSTALLATION BELOW SOIL. INSTALL AT HIGH POINTS IN DRIP LINE SYSTEM	
	TREE DIAPER TD48R, ROUND SHAPE, MODEL # 1048VA	
	AREA TO RECEIVE DRP EMITTERS BOWSMITH SB SERIES SINGLE OUTLET DRIP EMITTER, BARBED INLET AND OUTLET, GREEN 0.6GPH	
	Emitter Notes: SB-06 0.6gph emitters (2 assigned to each 1 Gal plant) SB-06 0.6gph emitters (2 assigned to each 5 Gal plant)	
SYMBOL	MANUFACTURER/MODEL/DESCRIPTION	
	RAIN BIRD PESB-PRS-D 1" PLASTIC INDUSTRIAL VALVES. LOW FLOW OPERATING CAPABILITY. GLOBE CONFIGURATION WITH PRESSURE REGULATING MODULE, AND SCRUBBER TECHNOLOGY FOR RELIABLE PERFORMANCE IN DIRTY WATER IRRIGATION APPLICATIONS.	
	RAIN BIRD 44-LRC 1" BRASS QUICK-COUPLING VALVE, WITH CORROSION-RESISTANT STAINLESS STEEL SPRING, LOCKING THERMOPLASTIC RUBBER COVER, AND 2-PIECE BODY.	
	RAIN BIRD EPB-CP 1" 1-1/4", 1-1/2", 2" BRASS MASTER VALVE, THAT IS CONTAMINATION PROOF W/SELF-FLUSHING FILTER SCREEN. GLOBE CONFIGURATION, RECLAIMED WATER COMPATIBLE, AND PURPLE HANDLE COVER DESIGNATES NON-POTABLE WATER USE.	
	ZURN WILKINS 370x18 1" REDUCED PRESSURE PRINCIPLE ASSEMBLY. SIZE PER PLAN SEE ARCHITECTURE MECHANICAL PLANS FOR FINAL LOCATION AND DETAILS	
	HYDRO POINT WEATHER TRACK LC-18 STATION 2WIRE INSTALL CONTROLLER IN UTILITY ROOM SEE ARCHITECTURE PLANS FOR LOCATION	
	HYDRO POINT WtFlowHD-1-200 2" IRON, HIGH-DEFINITION FLOW SENSOR AND SUB-METER FOR 2" MAINLINES. INSTALL ON DOWNSTREAM SIDE OF BACKFLOW PREVENTER ABOVE GRADE PER DETAIL	
	POINT OF CONNECTION 3" WATER METER FOR IRRIGATION SEE CIVIL PLANS	
	IRRIGATION LATERAL LINE: PVC SCHEDULE 40	
	Valve Cabinet	
	Valve Number	
	Valve Flow	
	Valve Size	



DISCLAIMER:  
THE DESIGN SHOWN AND DESCRIBED HEREIN INCLUDING ALL TECHNICAL DRAWINGS, GRAPHIC REPRESENTATIONS, AND MODELS THEREOF ARE PROPRIETARY AND CAN NOT BE COPIED, DUPLICATED, OR COMMERCIALLY EXPLOITED IN ANY MANNER WITHOUT THE WRITTEN AND EXPRESS WRITTEN PERMISSION FROM ENVIRONMENTAL PLANNING GROUP GROUP (EPG).  
ENVIRONMENTAL PLANNING GROUP GROUP (EPG) PROVIDED QUANTITIES ARE CALCULATED BASED ON THE 3D MODEL PROVIDED. CONTRACTORS ARE RESPONSIBLE FOR REVIEWING THE DESIGN AND PROVIDING THEIR OWN CALCULATIONS AND AREAS FOR THE PURPOSES OF COST ESTIMATING RECORDS.  
THE CLIENT AND/OR THE CLIENT'S CONTRACTOR, IS RESPONSIBLE FOR OBTAINING OR PROVIDING THE NECESSARY CONSTRUCTION PERMIT FOR CITY CODE COMPLIANCE.

8/2/2024

Reserved for permit stamp

159 South Jackson St., Suite 200  
Seattle, Washington 98104 USA  
+1 206 454 2870 dsharris@epg.com

**Olson Kundig**

project  
SOMMET BLANC RESIDENCE 1  
ADDRESS  
PARK CITY, UT

White Summit Development, LLC  
PO Box 980022  
Park City, Utah 84098

Acoustic Consultant  
**ERC Acoustics**  
1932 1st Ave., Suite 620  
Seattle, WA 98101

Pool Consultant  
**Cloward 100**  
2806 N University Ave., Suite 290  
Provo, UT 84604

Landscape Architect  
**EPG Design**  
6948 South High Tech Drive, Suite 100  
Midvale, Utah 84047

Specifications Writer  
**Friday Group**  
88 Mainell Road  
Noddybury, VT

Code Consultant  
**Holmes**  
600 1st Avenue, Suite 200A  
Seattle, WA 98104

Fire Protection Engineer  
**Jensen Hughes**  
One Research Drive, Suite 305C  
Westborough, MA 01581

Vertical Transportation Consultant  
**Larch Bates**  
15515 North Creek Parkway, Suite 304  
Bothell, WA 98011

Structural Engineer  
**Magnusson Klemencic Associates**  
1301 5th Ave., Suite 3200  
Seattle, WA 98101

Lighting Designer  
**Q**  
1319 SE MLK Blvd., Suite 210  
Portland, Oregon 97219

Building Envelope Consultant  
**RDH**  
2101 N 34th St  
Seattle, WA 98103

Accessibility Consultant  
**Studio Pacifica**  
2144 Westlake Ave N, Suite F  
Seattle, WA 98109

MEP Engineer  
**WGP USA**  
1001 Fourth Ave., Suite 3100  
Seattle, WA 98154

principal architect...David Harris  
project manager...Grant Hardy  
drawn by...Grant Hardy

checked by...Michael Park  
job no. 20952  
date June 10, 2024

revisions:  
IFC 2 5/17/2024  
VLU Updates 7/29/2024

no. date by

PERMIT SET  
IFC SET 2 OF 3

June 10, 2024

IRRIGATION PLAN

L702