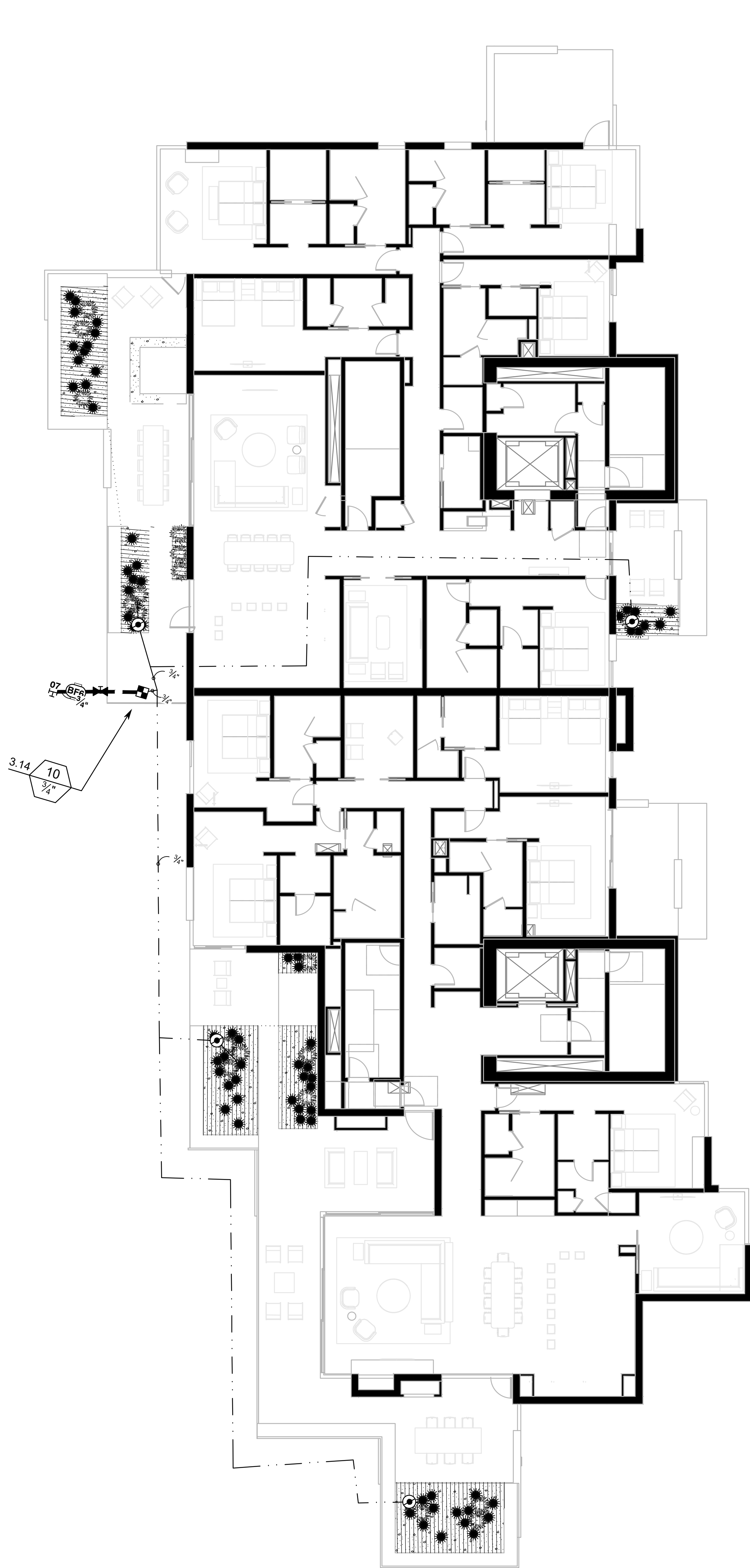
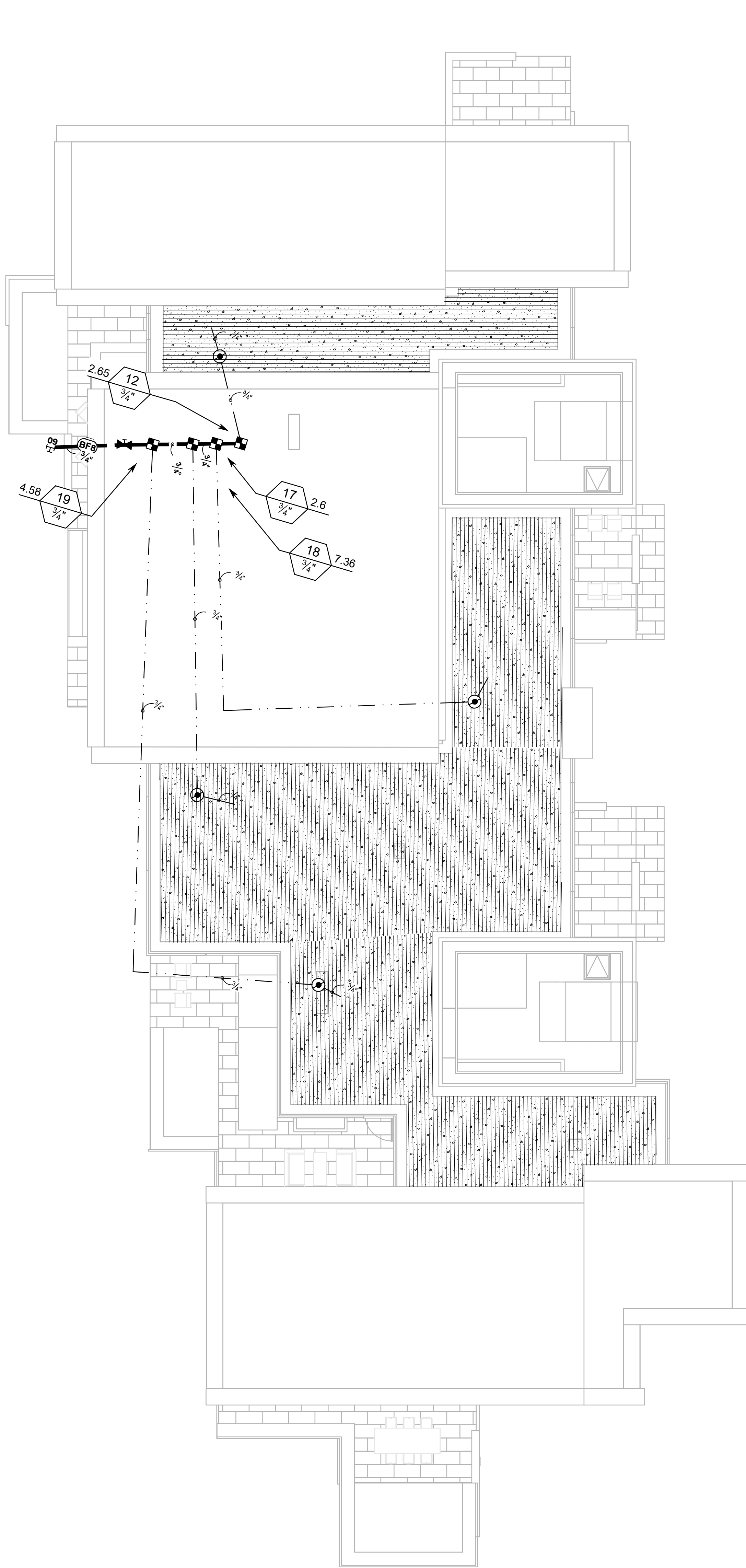


1 BUILDING B - FLOOR 5
1" = 10'-0"



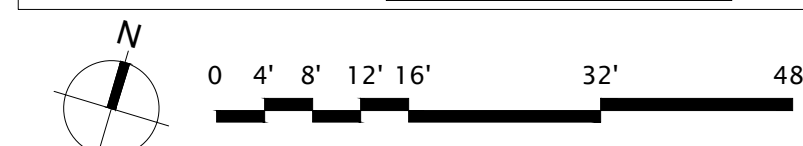
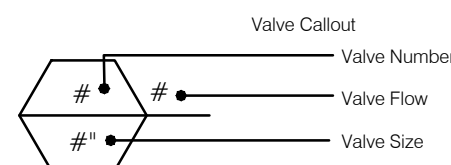
2 BUILDING B - FLOOR 6
1" = 10'-0"



3 BUILDING B - FLOOR 8
1" = 10'-0"

IRRIGATION SCHEDULE

SYMBOL	MANUFACTURER/MODEL/DESCRIPTION
	RAIN BIRD RWS-4-B-C-P W/ RWS-SOCK 1401 MINI ROOT WATERING SYSTEM WITH 4" DIAMETER X 18" LONG WITH LOCKING GRATE, SEMI-RIGID MESH TUBE AND RAIN BIRD 1401 0.25 GPM BUBBLER AS INDICATED WITH CHECK VALVE, PURPLE GRATE, AND SAND SOCK FOR SANDY SOIL.
	REMOTE CONTROL DRIP VALVE RAINBIRD 1000V NPT W/ 30PSI PRESSURE REGULATOR AND 30 MESH WYE STRAINER
	PVC TO POLY TUBING PIPE TRANSITION POINT FROM PVC LATERAL TO DRIP TUBING
	AREA TO RECEIVE DRIPLINE RAIN BIRD XF-CV-65-19 XF-CV ON-SURFACE LANDSCAPE DRIPLINE WITH A HEAVY-DUTY 3.5 PSI CHECK VALVE, 0.8 GPM EMITTERS AT 18" O.C. DRIPLINE LATERALS SPACED AT 18" APART, WITH EMITTERS OFFSET FOR TRIANGULAR PATTERN. GREAT FOR ELEVATION CHANGE. SPECIFY IF INSERT FITTINGS.
	RAIN BIRD PESB-PRS-D 1" PLASTIC INDUSTRIAL VALVES. LOW FLOW OPERATING CAPABILITY, GLOBE CONFIGURATION, WITH PRESSURE REGULATING MODULE, AND SCRUBBER TECHNOLOGY FOR RELIABLE PERFORMANCE IN DIRTY WATER IRRIGATION APPLICATIONS.
	LEEMCO STAINLESS STEEL GATE VALVE LOT SIZE PER LINE SS, CLASS 125 304 STAINLESS STEEL.
	ZURN WILKINS 375XLB 3/4" REDUCED PRESSURE PRINCIPLE ASSEMBLY. SIZE PER PLAN SEE ARCHITECTURE MECHANICAL PLANS FOR FINAL LOCATION AND DETAILS.
	ZURN WILKINS 375XLB 3/4" REDUCED PRESSURE PRINCIPLE ASSEMBLY. SIZE PER PLAN SEE ARCHITECTURE MECHANICAL PLANS FOR FINAL LOCATION AND DETAILS.
	ZURN WILKINS 375XLB 3/4" REDUCED PRESSURE PRINCIPLE ASSEMBLY. SIZE PER PLAN SEE ARCHITECTURE MECHANICAL PLANS FOR FINAL LOCATION AND DETAILS.
	ZURN WILKINS 375XLB 3/4" REDUCED PRESSURE PRINCIPLE ASSEMBLY. SIZE PER PLAN SEE ARCHITECTURE MECHANICAL PLANS FOR FINAL LOCATION AND DETAILS.
	ZURN WILKINS 375XLB 3/4" REDUCED PRESSURE PRINCIPLE ASSEMBLY. SIZE PER PLAN SEE ARCHITECTURE MECHANICAL PLANS FOR FINAL LOCATION AND DETAILS.
	ZURN WILKINS 375XLB 3/4" REDUCED PRESSURE PRINCIPLE ASSEMBLY. SIZE PER PLAN SEE ARCHITECTURE MECHANICAL PLANS FOR FINAL LOCATION AND DETAILS.
	ZURN WILKINS 375XLB 3/4" REDUCED PRESSURE PRINCIPLE ASSEMBLY. SIZE PER PLAN SEE ARCHITECTURE MECHANICAL PLANS FOR FINAL LOCATION AND DETAILS.
	ZURN WILKINS 375XLB 3/4" REDUCED PRESSURE PRINCIPLE ASSEMBLY. SIZE PER PLAN SEE ARCHITECTURE MECHANICAL PLANS FOR FINAL LOCATION AND DETAILS.
	ZURN WILKINS 375XLB 3/4" REDUCED PRESSURE PRINCIPLE ASSEMBLY. SIZE PER PLAN SEE ARCHITECTURE MECHANICAL PLANS FOR FINAL LOCATION AND DETAILS.
	ZURN WILKINS 375XLB 3/4" REDUCED PRESSURE PRINCIPLE ASSEMBLY. SIZE PER PLAN SEE ARCHITECTURE MECHANICAL PLANS FOR FINAL LOCATION AND DETAILS.
	HYDRO POINT WEATHER TRACK LG-18 STATION 2WIRE INSTALL CONTROLLER IN UTILITY ROOM SEE ARCHITECTURE PLANS FOR LOCATION
	POINT OF CONNECTION 3/4" BUILDING A - FLOOR 5 - SEE PLUMBING PLANS FOR POINT OF CONNECTION AND BACKFLOW PREVENTER
	POINT OF CONNECTION 3/4" LOBBY BUILDING - SEE PLUMBING PLANS FOR POC AND BACKFLOW PREVENTER
	POINT OF CONNECTION 3/4" BUILDING B - FLOOR 3 - SEE PLUMBING PLANS
	POINT OF CONNECTION 3/4" BUILDING C - FLOOR 8 - SEE PLUMBING PLANS
	POINT OF CONNECTION 3/4" BUILDING A - FLOOR 6 - SEE PLUMBING PLANS
	POINT OF CONNECTION 3/4" BUILDING B - FLOOR 8 - SEE PLUMBING PLANS
	POINT OF CONNECTION 3/4" BUILDING A - FLOOR 9 - SEE PLUMBING PLANS
	POINT OF CONNECTION 3/4" BUILDING B - FLOOR 9 - SEE PLUMBING PLANS
	POINT OF CONNECTION 3/4" BUILDING C - FLOOR 9 - SEE PLUMBING PLANS
	IRRIGATION LATERAL LINE: PVC SCHEDULE 40
	Vertical Transportation Consultant Larch Bates 15515 North Creek Parkway, Suite 304 Bothell, WA 98011
	Structural Engineer Magnusson Klemencic Associates 1301 5th Ave, Suite 3200 Seattle, WA 98101
	Lighting Designer C 1319 SE MLK Blvd, Suite 210 Portland, Oregon 97219
	Building Envelope Consultant RDH 2101 N 34th St Seattle, WA 98103
	Accessibility Consultant Studio Pacifica 2144 Westlake Ave N, Suite F Seattle, WA 98109
	MEP Engineer WSP USA 1001 Fourth Ave, Suite 3100 Seattle, WA 98154



DISCLAIMER:
THE DESIGN SHOWN AND DESCRIBED HEREIN, INCLUDING ALL TECHNICAL DRAWINGS, GRAPHIC REPRESENTATIONS, AND MODELS THEREOF, ARE PROPRIETARY AND CAN NOT BE COPIED, DUPLICATED, OR COMMERCIALY EXPLOITED IN ANY MANNER WITHOUT THE SOLE AND EXPRESS WRITTEN PERMISSION FROM ENVIRONMENTAL PLANNING GROUP (EPG).
ENVIRONMENTAL PLANNING GROUP (EPG) PROVIDED QUANTITIES ARE CALCULATED BASED ON THE 3D MODEL PROVIDED. CONTRACTORS ARE RESPONSIBLE FOR REVIEWING THE DESIGN AND PROVIDING THEIR OWN CALCULATIONS AND AREAS FOR THE PURPOSES OF COST ESTIMATING. REVISIONS:
THE CLIENT AND/OR THE CLIENT'S CONTRACTOR, IS RESPONSIBLE FOR OBTAINING OR PROVIDING THE NECESSARY CONSTRUCTION PERMIT FOR CITY CODE COMPLIANCE.

Reserved for permit stamp

PROJECT
SOMMET BLANC RESIDENCE 1

ADDRESS
PARK CITY, UT

White Summit Development, LLC
PO Box 980022
Park City, Utah 84098

Acoustic Consultant
BRC Acoustics
1932 1st Ave, Suite 620
Seattle, WA 98101

Pool Consultant
Cloward 100
2696 N University Ave, Suite 290
Provo, UT 84604

Landscape Architect
EPG Design
6040 South High Tech Drive, Suite 100
Midvale, Utah 84047

Specifications Writer
Friday Group
88 Mainell Road
Middlebury, VT

Code Consultant
Holmes
600 1st Avenue, Suite 200A
Seattle, WA 98104

Fire Protection Engineer
Jensen Hughes
One Research Drive, Suite 305C
Westborough, MA 01581

Vertical Transportation Consultant
Larch Bates
15515 North Creek Parkway, Suite 304
Bothell, WA 98011

Structural Engineer
Magnusson Klemencic Associates
1301 5th Ave, Suite 3200
Seattle, WA 98101

Lighting Designer
C
1319 SE MLK Blvd, Suite 210
Portland, Oregon 97219

Building Envelope Consultant
RDH
2101 N 34th St
Seattle, WA 98103

Accessibility Consultant
Studio Pacifica
2144 Westlake Ave N, Suite F
Seattle, WA 98109

MEP Engineer
WSP USA
1001 Fourth Ave, Suite 3100
Seattle, WA 98154

principal architect...David Harris
project manager...Grant Hardy
drawn by...Grant Hardy
checked by...Michael Park
job no. 20952
date June 10, 2024

revisions:
IFC 2 5/17/2024
VLU Updates 7/29/2024

no. date by

PERMIT SET
IFC SET 2 OF 3

June 10, 2024

BUILDING B
ROOF IRRIGATION PLAN
L706