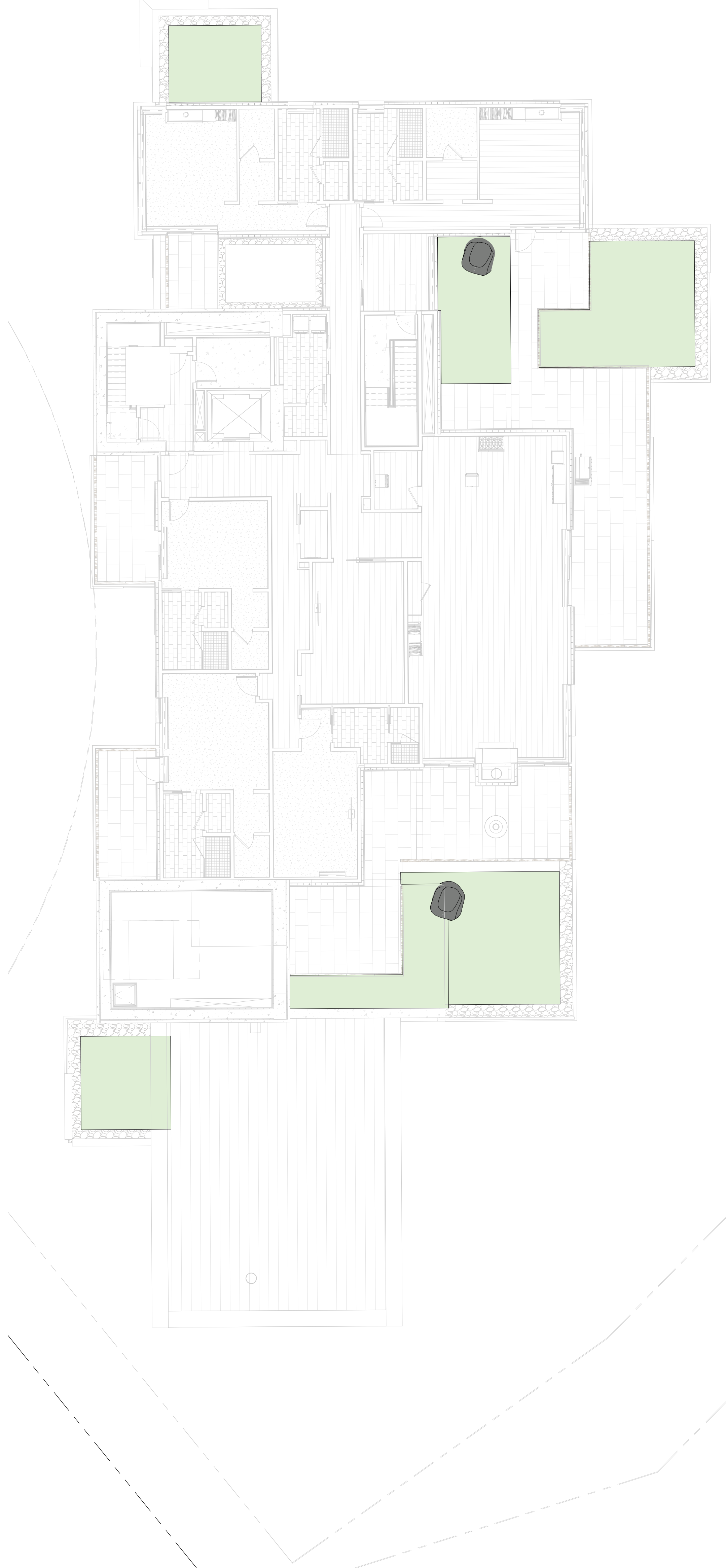
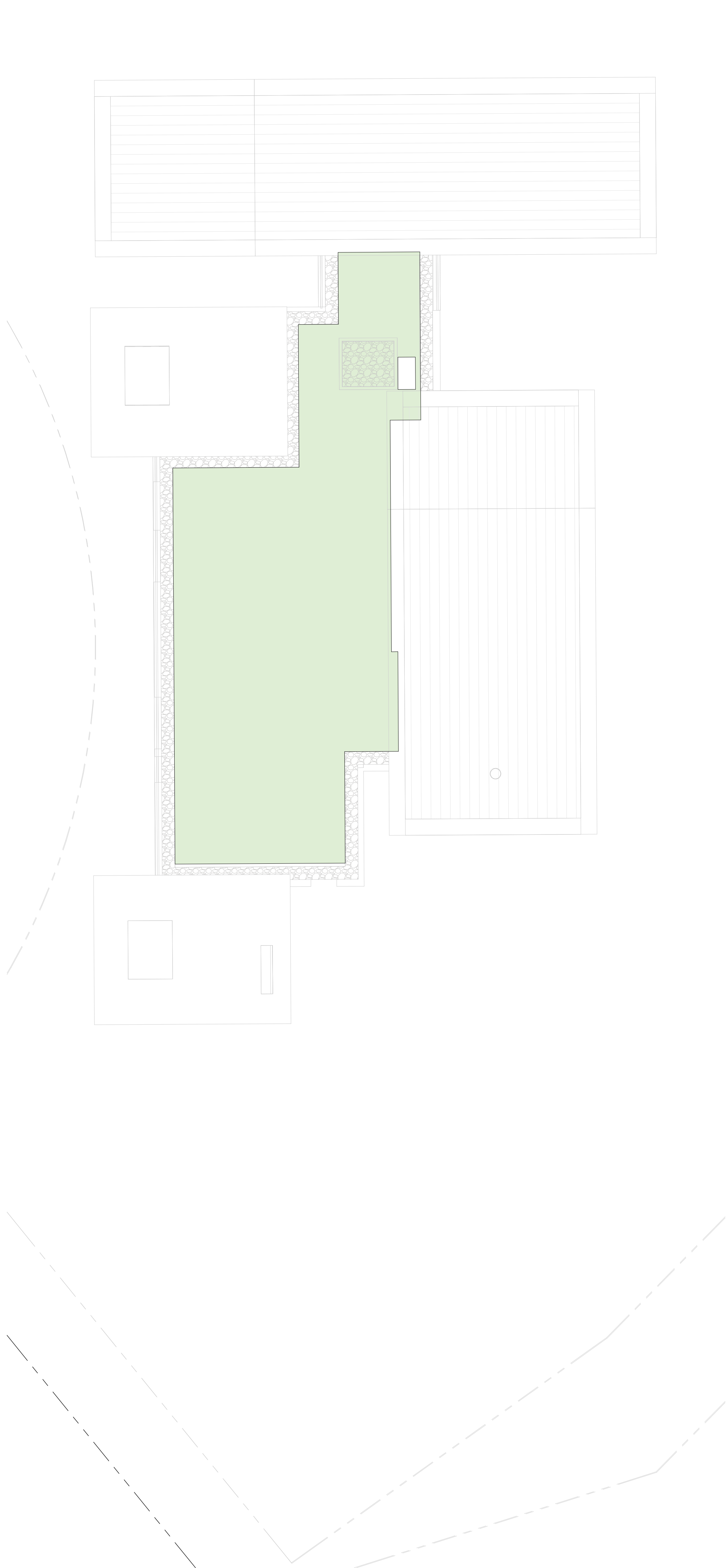


1 BUILDING A LEVEL 5 GREEN ROOFS
1" = 10'-0"



2 BUILDING A LEVEL 6 GREEN ROOFS
1" = 10'-0"



3 BUILDING A LEVEL 8 GREEN ROOFS
1" = 10'-0"

KEYNOTES

01 PAVEMENT, RAMPS, AND CURBS

Keynote	Detail	SF
1VAG-2S	Coated Stone with Agt Base	41,401
1VPA-C	Concrete 4" - Brown Finish with Sawcut Soring	1,893 SF
1VPA-CAH	Concrete 4" - White with Acid Wash with Sawcut Soring	21,489 SF
1VPA-COC	Concrete 4" - Integral Color with Decorative Soring	5,419 SF
1VPU-STN-COPS	Stone Paver - Monolithic - 85x12x12 - Pool Coping	CLOWARD
1VPU-STN-B	Basalt Paver - Monolithic - 85x12x12 - with Core Base	126,401
1VPU-STN-BRD	Granite Paver - Monolithic - 85x12x12 - with Concrete Base Bridge	126,401
1VPU-STN-G	Granite Paver - Monolithic - 85x12x12 - with Concrete Base	126,401
1VPU-STN-G	Granite Paver - Monolithic - 85x12x12 - with Trench Drain Under	61,402

02 JOINTS

Keynote	Detail	LF
JOINT - SAW CUT		76,401
JOINT - SAW CUT - REVELED		86,401
JOINT - EXPANSION		96,401
JOINT - COLD		106,401

03 SITE STAIRS

Keynote	Detail	SF
31STRS-SA	Basalt Trench on COP Base - 4'x12'x4"	13,401
31STRS-C	Concrete Stair - 4' x 12' - Acid Wash Natural Gray with Concrete with	156,401
31STRS-SR	Granite Trench on Concrete Base - 4'x12"	13,401

04 SITE WALLS

Keynote	Detail	VSF / FF
4CON	8" Concrete Wall Boardform	16,401
4CON-RT12	12" - Not Tied Wall	17,401
4CON	8" Concrete Wall Boardform	16,401
4CON-12	12" Concrete Wall Boardform	16,401
4CON-13-8ASALT	13" Basalt	17,401
4CON-24	24" Concrete Wall Boardform	16,401
4CON-8ASALT	24" Basalt	17,401

USE CALLOUTS FOR DETAILING AND SECTION VIEWS OF WALLS (THAT INVOLVE RELATIONSHIPS)

05 SITE AMENITIES

Keynote	Detail	Count
5BKE	Surface Mount Mini Steel	76,402
5SHOLDER	Basalt Boulder	16,401
5TFT	Pyre 1'x4'x9'x12" - for Feature by Outdoor Elements	9,402
5SIF-156AT	Manufacture (IN2071) - 156x12x12x12	INT DES
5SIF-156AT	Manufacture (IN2072) - 156x12x12x12	INT DES
5SIF-156AT	Manufacture (IN2073) - 156x12x12x12	INT DES
5SIF-156AT	Manufacture (IN2074) - 156x12x12x12	INT DES
5SIF-156AT	Manufacture (IN2075) - 156x12x12x12	INT DES
5SIF-156AT	Manufacture (IN2076) - 156x12x12x12	INT DES
5SIF-156AT	Manufacture (IN2077) - 156x12x12x12	INT DES
5SIF-156AT	Manufacture (IN2078) - 156x12x12x12	INT DES
5SIF-156AT	Manufacture (IN2079) - 156x12x12x12	INT DES
5SIF-156AT	Manufacture (IN2080) - 156x12x12x12	INT DES
5SIF-156AT	Manufacture (IN2081) - 156x12x12x12	INT DES
5SIF-156AT	Manufacture (IN2082) - 156x12x12x12	INT DES
5SIF-156AT	Manufacture (IN2083) - 156x12x12x12	INT DES
5SIF-156AT	Manufacture (IN2084) - 156x12x12x12	INT DES
5SIF-156AT	Manufacture (IN2085) - 156x12x12x12	INT DES
5SIF-156AT	Manufacture (IN2086) - 156x12x12x12	INT DES
5SIF-156AT	Manufacture (IN2087) - 156x12x12x12	INT DES
5SIF-156AT	Manufacture (IN2088) - 156x12x12x12	INT DES
5SIF-156AT	Manufacture (IN2089) - 156x12x12x12	INT DES
5SIF-156AT	Manufacture (IN2090) - 156x12x12x12	INT DES
5SIF-156AT	Manufacture (IN2091) - 156x12x12x12	INT DES
5SIF-156AT	Manufacture (IN2092) - 156x12x12x12	INT DES
5SIF-156AT	Manufacture (IN2093) - 156x12x12x12	INT DES
5SIF-156AT	Manufacture (IN2094) - 156x12x12x12	INT DES
5SIF-156AT	Manufacture (IN2095) - 156x12x12x12	INT DES
5SIF-156AT	Manufacture (IN2096) - 156x12x12x12	INT DES
5SIF-156AT	Manufacture (IN2097) - 156x12x12x12	INT DES
5SIF-156AT	Manufacture (IN2098) - 156x12x12x12	INT DES
5SIF-156AT	Manufacture (IN2099) - 156x12x12x12	INT DES
5SIF-156AT	Manufacture (IN2100) - 156x12x12x12	INT DES

06 SITE RAILINGS AND FENCES

Keynote	Detail	LF
6GR18	Kalke - Flat - Splice - Wire Mesh - 18"	86,402
6GR42	Kalke - Flat - Splice - Wire Mesh - 42"	11,402
6GR56	Kalke - Flat - Splice - Wire Mesh - 56"	779

THE SITE RAILINGS TO MATCH WITH THE 04 AND 06 DETAIL FOR THE KAPO HANG / GUARDRAIL. ADJUST DESIGN TO MEET THE SPECIFIED VARIATIONS OF POLE AND RAIL HEIGHT DIFFERENCES

07 SITE LIGHTING

Keynote	Detail	Count
7SIF-156AT	Manufacture (IN2071) - 156x12x12x12	INT DES
7SIF-156AT	Manufacture (IN2072) - 156x12x12x12	INT DES
7SIF-156AT	Manufacture (IN2073) - 156x12x12x12	INT DES
7SIF-156AT	Manufacture (IN2074) - 156x12x12x12	INT DES
7SIF-156AT	Manufacture (IN2075) - 156x12x12x12	INT DES
7SIF-156AT	Manufacture (IN2076) - 156x12x12x12	INT DES
7SIF-156AT	Manufacture (IN2077) - 156x12x12x12	INT DES
7SIF-156AT	Manufacture (IN2078) - 156x12x12x12	INT DES
7SIF-156AT	Manufacture (IN2079) - 156x12x12x12	INT DES
7SIF-156AT	Manufacture (IN2080) - 156x12x12x12	INT DES
7SIF-156AT	Manufacture (IN2081) - 156x12x12x12	INT DES
7SIF-156AT	Manufacture (IN2082) - 156x12x12x12	INT DES
7SIF-156AT	Manufacture (IN2083) - 156x12x12x12	INT DES
7SIF-156AT	Manufacture (IN2084) - 156x12x12x12	INT DES
7SIF-156AT	Manufacture (IN2085) - 156x12x12x12	INT DES
7SIF-156AT	Manufacture (IN2086) - 156x12x12x12	INT DES
7SIF-156AT	Manufacture (IN2087) - 156x12x12x12	INT DES
7SIF-156AT	Manufacture (IN2088) - 156x12x12x12	INT DES
7SIF-156AT	Manufacture (IN2089) - 156x12x12x12	INT DES
7SIF-156AT	Manufacture (IN2090) - 156x12x12x12	INT DES
7SIF-156AT	Manufacture (IN2091) - 156x12x12x12	INT DES
7SIF-156AT	Manufacture (IN2092) - 156x12x12x12	INT DES
7SIF-156AT	Manufacture (IN2093) - 156x12x12x12	INT DES
7SIF-156AT	Manufacture (IN2094) - 156x12x12x12	INT DES
7SIF-156AT	Manufacture (IN2095) - 156x12x12x12	INT DES
7SIF-156AT	Manufacture (IN2096) - 156x12x12x12	INT DES
7SIF-156AT	Manufacture (IN2097) - 156x12x12x12	INT DES
7SIF-156AT	Manufacture (IN2098) - 156x12x12x12	INT DES
7SIF-156AT	Manufacture (IN2099) - 156x12x12x12	INT DES
7SIF-156AT	Manufacture (IN2100) - 156x12x12x12	INT DES

08 SITE DRAINAGE

Keynote	Detail	Count
8NPA	Slope Stabilization - Native Alpine Groundcover	63,300
8PA	Planting Area	26,402
8SCGLAWN	Lawn	6,611

09 PLANTING AREAS

Keynote	Detail	SF
8NPA	Slope Stabilization - Native Alpine Groundcover	63,300
8PA	Planting Area	26,402
8SCGLAWN	Lawn	6,611

10 MISCELLANEOUS ELEMENTS

Keynote	Detail	Count
10SIF-156AT	Manufacture (IN2071) - 156x12x12x12	INT DES
10SIF-156AT	Manufacture (IN2072) - 156x12x12x12	INT DES
10SIF-156AT	Manufacture (IN2073) - 156x12x12x12	INT DES
10SIF-156AT	Manufacture (IN2074) - 156x12x12x12	INT DES
10SIF-156AT	Manufacture (IN2075) - 156x12x12x12	INT DES
10SIF-156AT	Manufacture (IN2076) - 156x12x12x12	INT DES
10SIF-156AT	Manufacture (IN2077) - 156x12x12x12	INT DES
10SIF-156AT	Manufacture (IN2078) - 156x12x12x12	INT DES
10SIF-156AT	Manufacture (IN2079) - 156x12x12x12	INT DES
10SIF-156AT	Manufacture (IN2080) - 156x12x12x12	INT DES
10SIF-156AT	Manufacture (IN2081) - 156x12x12x12	INT DES
10SIF-156AT	Manufacture (IN2082) - 156x12x12x12	INT DES
10SIF-156AT	Manufacture (IN2083) - 156x12x12x12	INT DES
10SIF-156AT	Manufacture (IN2084) - 156x12x12x12	INT DES
10SIF-156AT	Manufacture (IN2085) - 156x12x12x12	INT DES
10SIF-156AT	Manufacture (IN2086) - 156x12x12x12	INT DES
10SIF-156AT	Manufacture (IN2087) - 156x12x12x12	INT DES
10SIF-156AT	Manufacture (IN2088) - 156x12x12x12	INT DES
10SIF-156AT	Manufacture (IN2089) - 156x12x12x12	INT DES
10SIF-156AT	Manufacture (IN2090) - 156x12x12x12	INT DES
10SIF-156AT	Manufacture (IN2091) - 156x12x12x12	INT DES
10SIF-156AT	Manufacture (IN2092) - 156x12x12x12	INT DES
10SIF-156AT	Manufacture (IN2093) - 156x12x12x12	INT DES
10SIF-156AT	Manufacture (IN2094) - 156x12x12x12	INT DES
10SIF-156AT	Manufacture (IN2095) - 156x12x12x12	INT DES
10SIF-156AT	Manufacture (IN2096) - 156x12x12x12	INT DES
10SIF-156AT	Manufacture (IN2097) - 156x12x12x12	INT DES
10SIF-156AT	Manufacture (IN2098) - 156x12x12x12	INT DES
10SIF-156AT	Manufacture (IN2099) - 156x12x12x12	INT DES
10SIF-156AT	Manufacture (IN2100) - 156x12x12x12	INT DES

A site plan diagram showing a building footprint (shaded gray) and a red dashed boundary. The plan includes a north arrow and a scale bar with markings at 0, 2', 4', 6', 8', 16', and 24'.

01 PAVEMENT, RAMPS, AND CURBS			
Keynote	Detail	SF	
1VAG-2S	Coated Stone with Agt Base	41,401	1,419 SF
1VPA-C	Concrete 4" - Brown Finish with Sawcut Soring		1,893 SF
1VPA-CAH	Concrete 4" - White with Acid Wash with Sawcut Soring		21,489 SF
1VPA-COC	Concrete 4" - Integral Color with Decorative Soring		5,419 SF
1VPU-STN-COPS	Stone Paver - Monolithic - 85x12x12 - Pool Coping	CLOWARD	410 SF
1VPU-STN-B	Basalt Paver - Monolithic - 85x12x12 - with Core Base	126,401	710 SF
1VPU-STN-BRD	Granite Paver - Monolithic - 85x12x12 - with Concrete Base Bridge	126,401	116 SF
1VPU-STN-G	Granite Paver - Monolithic - 85x12x12 - with Concrete Base	126,401	4,912 SF
1VPU-STN-G	Granite Paver - Monolithic - 85x12x12 - with Trench Drain Under	61,402	114 SF
02 JOINTS			
Keynote	Detail	LF	
JOINT - SAW CUT		76,401	
JOINT - SAW CUT - REVELED		86,401	
JOINT - EXPANSION		96,401	
JOINT - COLD		106,401	
03 SITE STAIRS			
Keynote	Detail	SF	
31STRS-SA	Basalt Trench on COP Base - 4'x12'x4"	13,401	402 SF
31STRS-C	Concrete Stair - 4' x 12' - Acid Wash Natural Gray with Concrete with	156,401	1,478 SF
31STRS-SR	Granite Trench on Concrete Base - 4'x12"	13,401	1,272 SF
04 SITE WALLS			
Keynote	Detail	YSP / FF	
4CON	8" Concrete Wall Boardform	16,401	84 SF
4CON-RT12	12" - Not Tied Wall	17,401	480 SF
4CON	8" Concrete Wall Boardform	16,401	1,361 SF
4CON-12	12" Concrete Wall Boardform	16,401	12,336 SF
4CON-13-8ASALT	13" Basalt	17,401	910 SF
4CON-24	24" Concrete Wall Boardform	16,401	219 SF
4CON-8ASALT	24" Basalt	17,401	302 SF
05 SITE AMENITIES			
Keynote	Detail	Count	
5BKE	Surface Mount Mini Steel	76,402	6
5SHOLDER	Basalt Boulder	16,401	102
5TFT	Pyre 1'x4'x9'x12" - for Feature by Outdoor Elements	9,402	4
5SIF-156AT	Manufacture (IN2071) - 156x12x12x12	INT DES	16
5SIF-156AT	Manufacture (IN2072) - 156x12x12x12	INT DES	8
5SIF-156AT	Manufacture (IN2073) - 156x12x12x12	INT DES	8
5SIF-156AT	Manufacture (IN2074) - 156x12x12x12	INT DES	8
5SIF-156AT	Manufacture (IN2075) - 156x12x12x12	INT DES	8
5SIF-156AT	Manufacture (IN2076) - 156x12x12x12	INT DES	8
5SIF-156AT	Manufacture (IN2077) - 156x12x12x12	INT DES	8
5SIF-156AT	Manufacture (IN2078) - 156x12x12x12	INT DES	8
5SIF-156AT	Manufacture (IN2079) - 156x12x12x12	INT DES	8
5SIF-156AT	Manufacture (IN2080) - 156x12x12x12	INT DES	8
5SIF-156AT	Manufacture (IN2081) - 156x12x12x12	INT DES	8
5SIF-156AT	Manufacture (IN2082) - 156x12x12x12	INT DES	8
5SIF-156AT	Manufacture (IN2083) - 156x12x12x12	INT DES	8
5SIF-156AT	Manufacture (IN2084) - 156x12x12x12	INT DES	8
5SIF-156AT	Manufacture (IN2085) - 156x12x12x12	INT DES	8
5SIF-156AT	Manufacture (IN2086) - 156x12x12x12	INT DES	8
5SIF-156AT	Manufacture (IN2087) - 156x12x12x12	INT DES	8
5SIF-156AT	Manufacture (IN2088) - 156x12x12x12	INT DES	8
5SIF-156AT	Manufacture (IN2089) - 156x12x12x12	INT DES	8
5SIF-156AT	Manufacture (IN2090) - 156x12x12x12	INT DES	8
5SIF-156AT	Manufacture (IN2091) - 156x12x12x12	INT DES	8
5SIF-156AT	Manufacture (IN2092) - 156x12x12x12	INT DES	8
5SIF-156AT	Manufacture (IN2093) - 156x12x12x12	INT DES	8
5SIF-156AT	Manufacture (IN2094) - 156x12x12x12	INT DES	8
5SIF-156AT	Manufacture (IN2095) - 156x12x12x12	INT DES	8
5SIF-156AT	Manufacture (IN2096) - 156x12x12x12	INT DES	8
5SIF-156AT	Manufacture (IN2097) - 156x12x12x12	INT DES	8
5SIF-156AT	Manufacture (IN2098) - 156x12x12x12	INT DES	8
5SIF-156AT	Manufacture (IN2099) - 156x12x12x12	INT DES	8