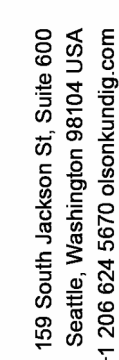
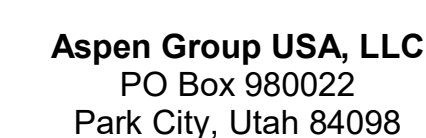


1. DIMENSIONS ARE TO FACE OF STUD OF EXTERIOR WALLS, CORRIDOR WALLS & INTERIOR WALLS. UNO.
2. DIMENSIONS ARE TO CENTERLINE OF DIMENSION WALLS.
3. ALL EXTERIOR STRUCTURAL STEEL TO RECEIVE A HORIZONTAL PAINTING UNO.
4. AT FRAMED EXTERIOR WALLS, FRAMING TO BE SET BACK 50" FROM FACE OF CONCRETE TO ALLOW FOR FLUSH ADJUSTMENT OF SHEATHING TO EDGE OF SLAB UNO.
5. CASING DIMENSIONS ARE TO FACE OF FINISH AND AO 11 FOR ASSEMBLIES.
6. SEE SHEETS AO 10 AND AO 11 FOR ASSEMBLIES.
7. ALL CORRIDOR WALLS ARE TYPE AE UNO.
8. ALL DIMENSION WALLS ARE TYPE AE UNO.
9. ALL INTERIOR PARTITIONS ARE TYPE AE UNO.
10. ALL PARTITION FOUNDATIONS TO BE CONCRETE, ALL COLUMN TYPES 01; UNO.
11. ALL VENT SHAFT WALLS ARE TYPE KA; UNO.
12. REFER TO LIFE SAFETY PLANS AO 30 & AO 40 FOR FULL EXTENT OF FIRE RATED WALLS.
13. UNIT PLANT EQUIPMENT ON ROOFS TO BE CONCRETE UNO.
14. ALL OWNER PARKING STALLS SHALL INCLUDE E/F INFRASTRUCTURE.
15. REFER TO SHEET AO 08 FOR ANSI TYPE B ACCESSIBILITY REQUIREMENTS.
16. REFER TO SHEET AO 07 FOR ADA ACCESSIBILITY REQUIREMENTS.
17. REFER TO SHEET AO 06 FOR ADA PUBLIC SPACE ACCESSIBILITY REQUIREMENTS.
18. ALL MECHANICAL EQUIPMENT LOCATED WITHIN ELEVATOR MECHANICAL EQUIPMENT ENCLOSURE.



Olson Kundig

SOMMET BLANC
9300 MARSAC AVE
PARK CITY, UT 84060



Pool Consultant
Cloward H2O
2696 N University Ave, Suite 290
Provo, UT 84604

Landscape Architect
EPG Design
6949 South High Tech Drive, Suite 100
Midvale, Utah 84047

Specifications Writer
Friday Group
88 Mainelli Road
Middlebury, VT

Code Consultant
Holmes
600 1st Avenue, Suite 200A
Seattle, WA 98104

Fire Protection Engineer
Jensen Hughes
One Research Drive, Suite 305C
Westborough, MA 01581

Vertical Transportation Consultant
Lerch Bates
19515 North Creek Parkway, Suite 300
Bothell, WA 98011

Structural Engineer
Magnusson Klemencic Associates
1301 5th Ave, Suite 3200
Seattle, WA 98101

Lighting Designer
O-
1319 SE MLK Blvd, Suite 210
Portland, Oregon 97219

Building Envelope Consultant
RDH
2101 N 34th St
Seattle, WA 98103

Accessibility Consultant
Studio Pacifica
2144 Westlake Ave N, Suite F
Seattle, WA 98109

MEP Engineer
WSP USA
1001 Fourth Ave., Suite 3100
Seattle, WA 98154

principal architect TK, KM
project manager TM, JB, SL, MD
drawn by SK, SS, JR, CP, EA,
JF, BD

checked by JB
job no. 20062
date 11/25/20

revisions:

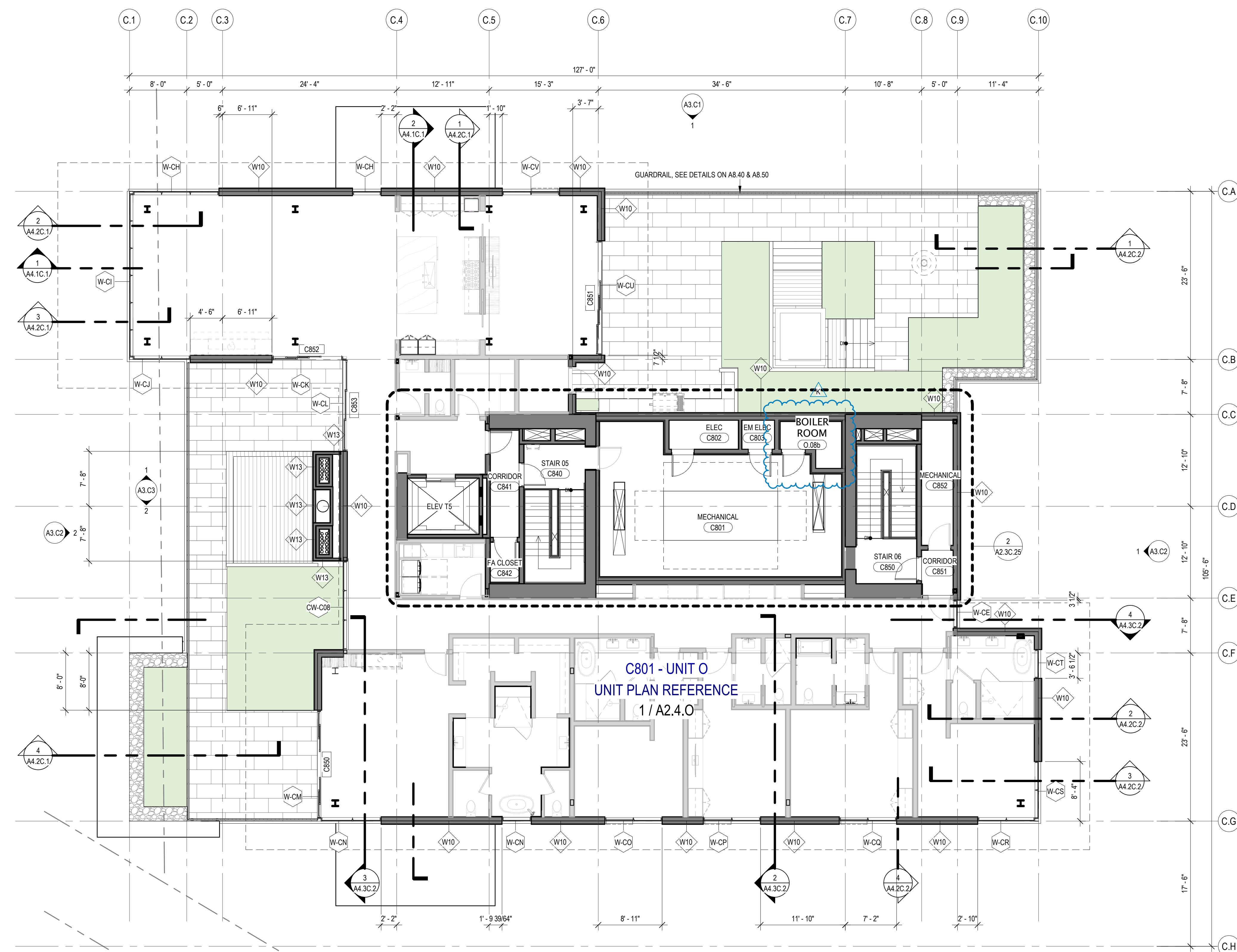
K 02/05/25	ASI 006.1
09/30/22	BUILDING PERMIT RESUBMITTAL #1
no.	date

no.	date	
-----	------	--

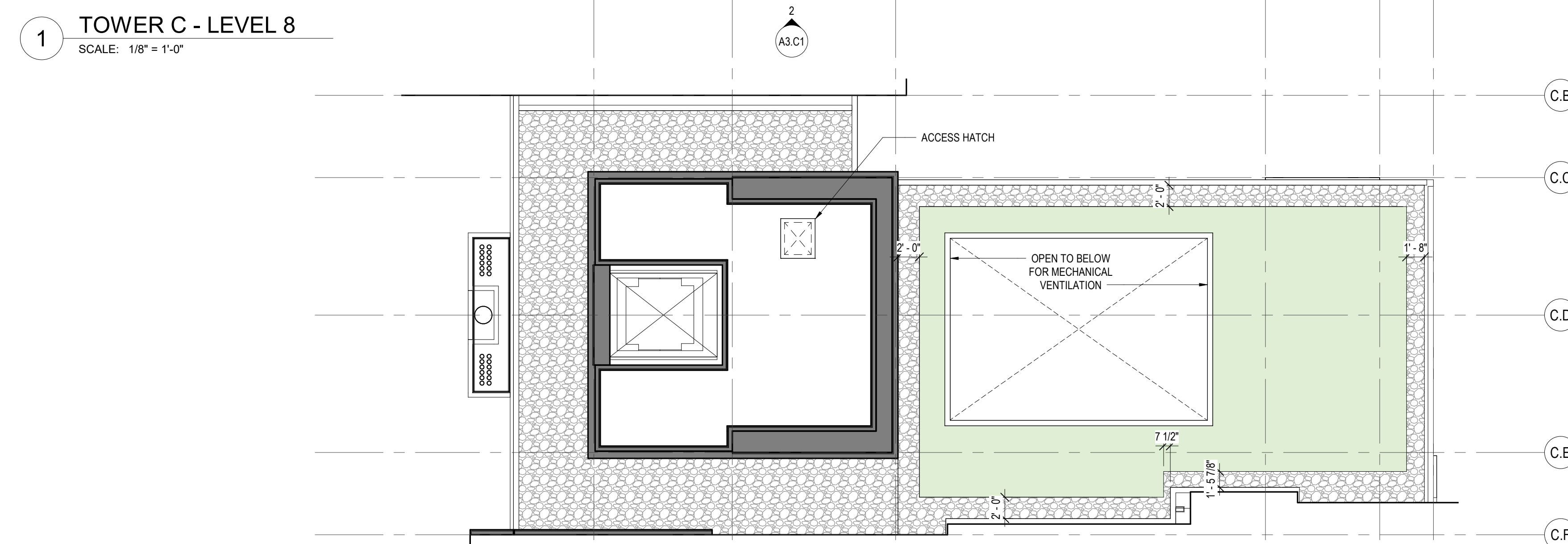
IFC SET 3 OF 3
11/25/24

PLAN - TOWER C - LVL 8

A2.2C.19



1 TOWER C - LEVEL 8
SCALE: 1/8" = 1'-0"



2 TOWER C - ROOF - MECHANICAL PLENUM - LOWER
SCALE: 1/8" = 1'-0"

