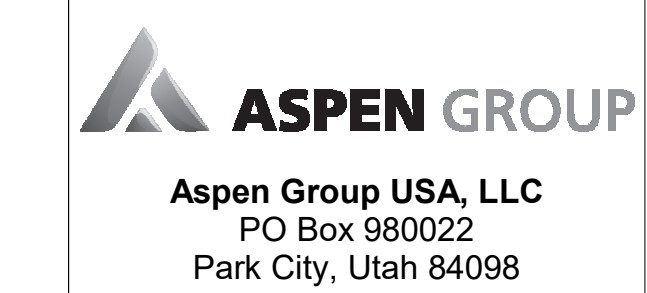


103 South Jackson St., Suite 200  
Seattle, Washington 98104 USA  
+1 206 451 5971 [olsonkunding.com](mailto:olsonkunding.com)

**Olson Kundig**  
SOMMET BLANC  
8500 MARSA C AVE  
PARK CITY, UT 84060



**Pool Consultant**  
Cloward H2O  
2696 N University Ave., Suite 200  
Provo, UT 84604

**Landscape Architect**  
EPG Design  
6940 South High Tech Drive, Suite 100  
Midvale, Utah 84047

**Specifications Writer**  
Friday Group  
88 Mainelli Road  
Middlebury, VT

**Code Consultant**  
Holmes  
600 1st Avenue, Suite 200A  
Seattle, WA 98104

**Fire Protection Engineer**  
Jensen Hughes  
One Research Drive, Suite 305C  
Westborough, MA 01581

**Vertical Transportation Consultant**  
Lerch Bates  
19515 North Creek Parkway, Suite 304  
Bothell, WA 98011

**Structural Engineer**  
Magnusson Klemencic Associates  
1301 5th Ave., Suite 3200  
Seattle, WA 98101

**Lighting Designer**  
O  
1319 SE MLK Blvd, Suite 210  
Portland, Oregon 97219

**Building Envelope Consultant**  
RDH  
2101 N 34th St  
Seattle, WA 98103

**Accessibility Consultant**  
Studio Pacifica  
2144 Westlake Ave N, Suite F  
Seattle, WA 98109

**MEP Engineer**  
WSP USA  
1001 Fourth Ave., Suite 3100  
Seattle, WA 98154

principal architect TK, KM  
project manager TM, JB, SL, MD  
drawn by SK, SS, JR, CP, EA  
JF, BD

checked by JB  
job no. 2052  
date 11/25/24

revisions:


K 10/05/25 ASI 006.1  
no. date by

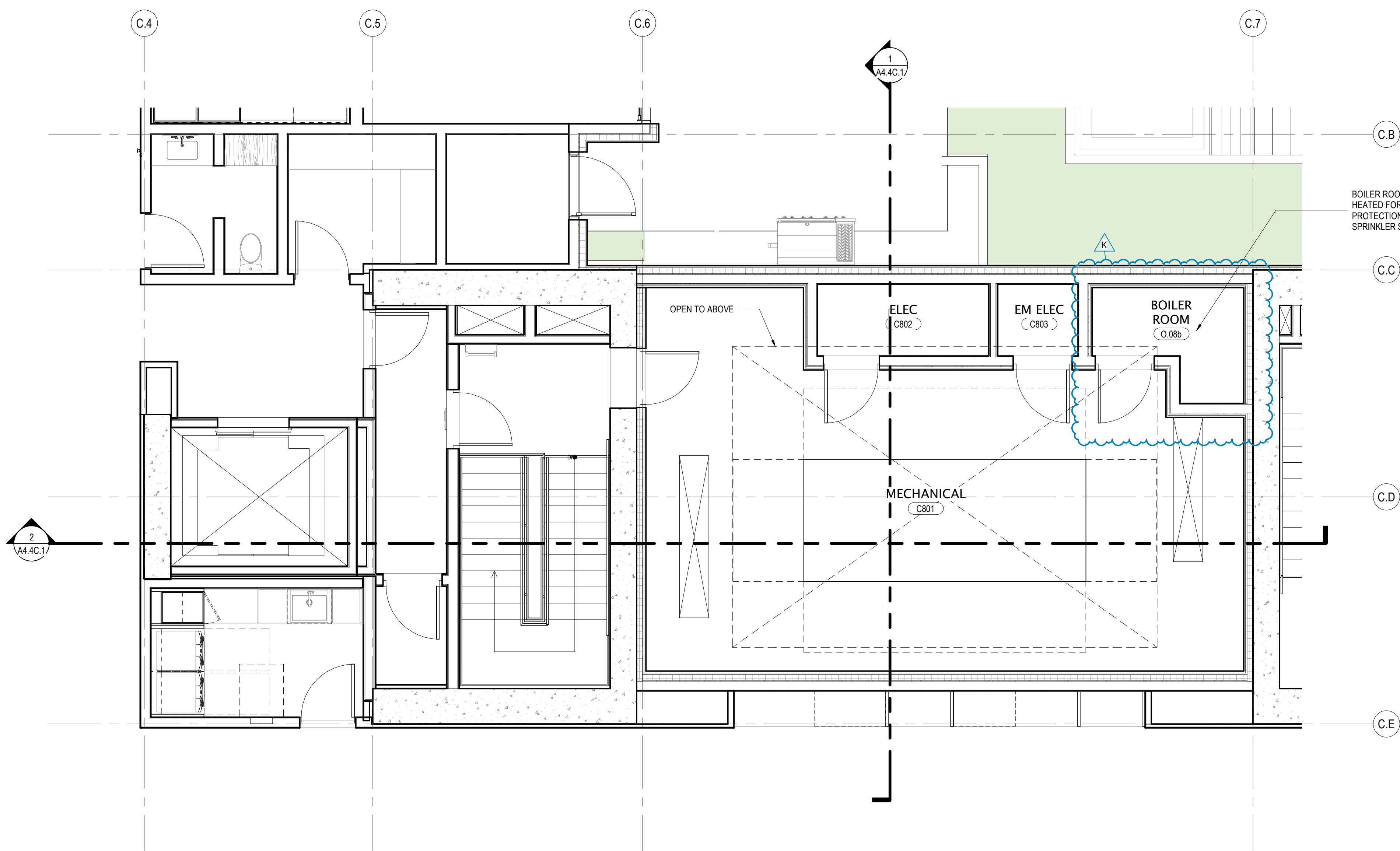
IFC SET 3 OF 3  
11/25/24

TOWER C - ENLARGED  
PLAN & SECTION -  
TOWER C ROOF

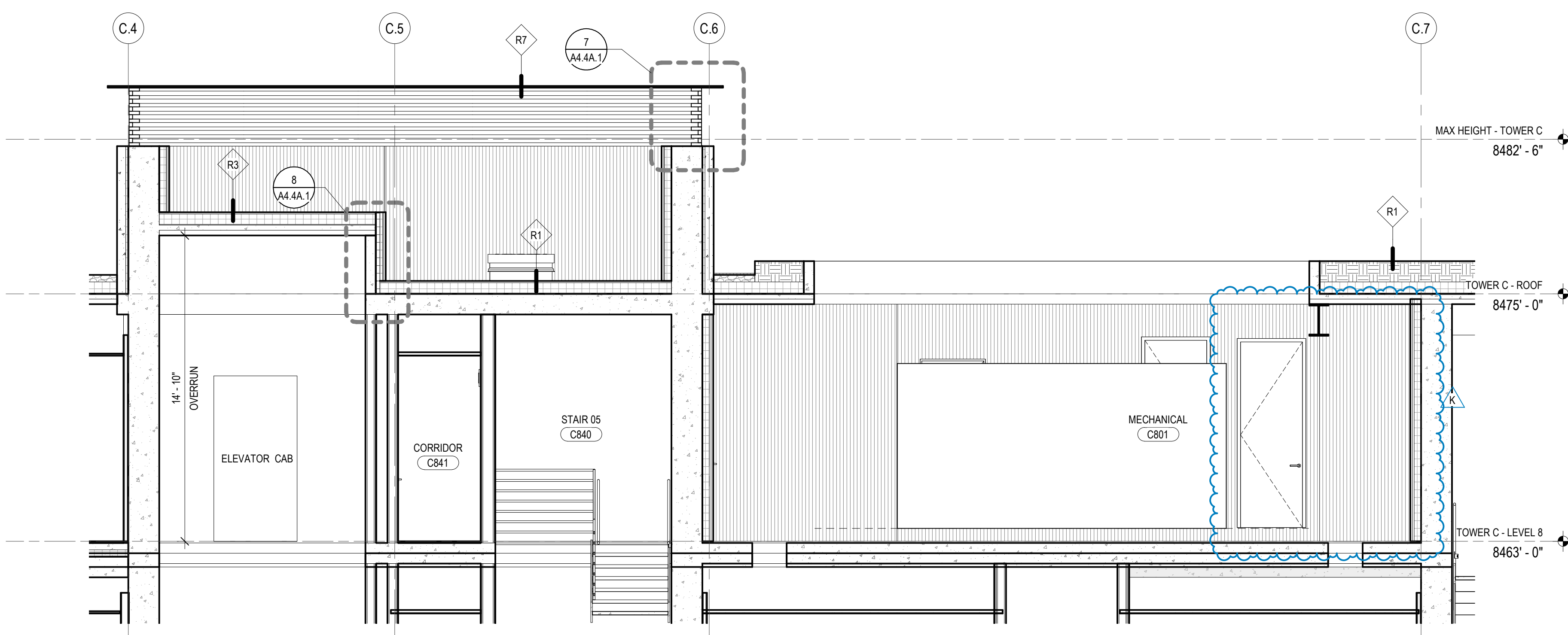
**A4.4C.1**

NOTES:

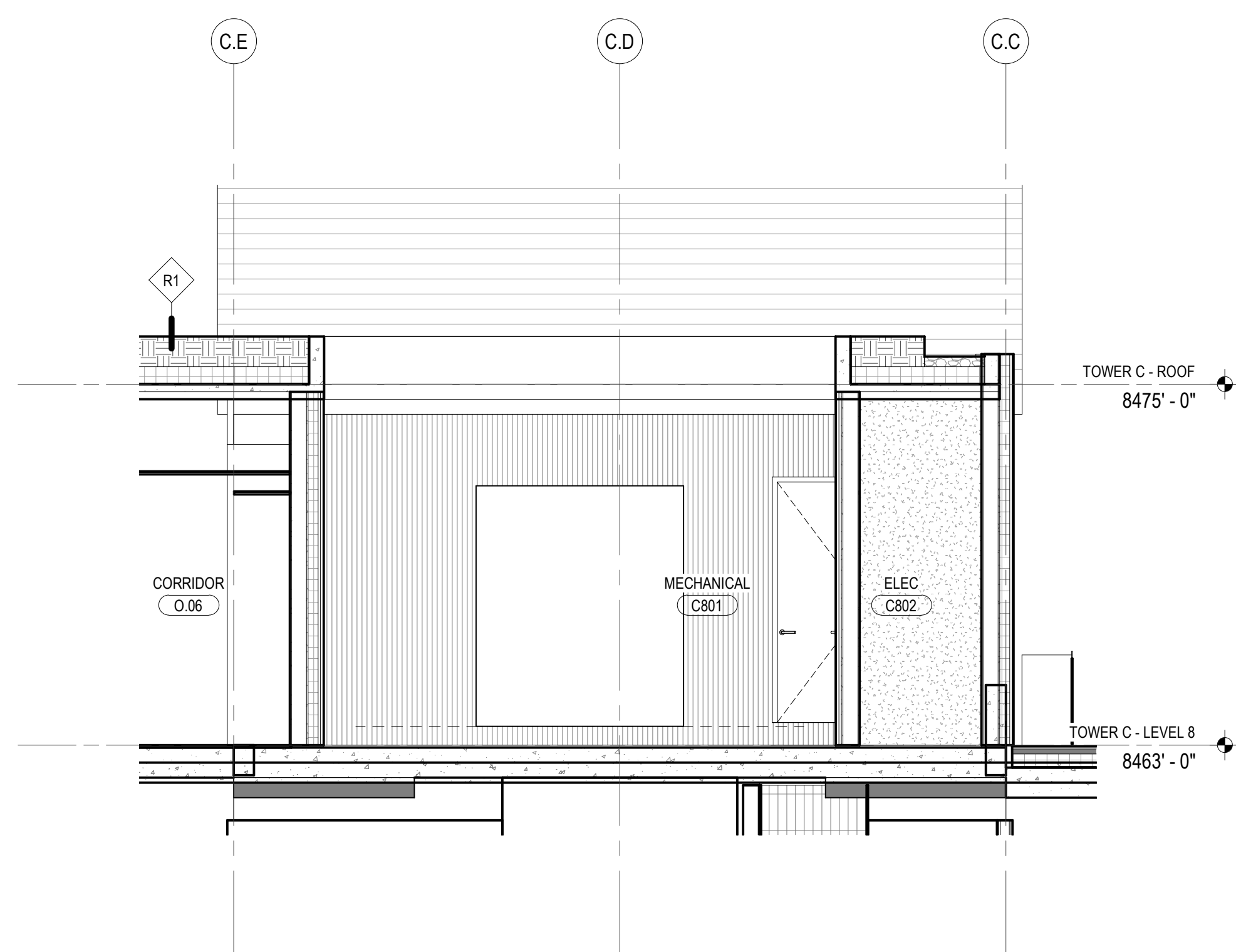
1. ROOM FOR FUTURE BOILER FOR RADIANT HYDRONIC SNOWMELT SYSTEM TO BE DESIGN BUILD BY OTHERS
2. BOILER ROOM TO BE HEATED FOR FREEZE PROTECTION & SPRINKLER SYSTEM.
3. ACCESS DOORS TO BOILER ROOM AT MEP ROOF TO BE VENTILATED, TYP.



4 LEVEL 8 - MECH ROOM  
SCALE: 1/4" = 1'-0"



2 SECTION @ ROOF MECH RM - LONGITUDINAL  
SCALE: 1/4" = 1'-0"



1 SECTION @ ROOF MECH RM - CROSS  
SCALE: 1/4" = 1'-0"