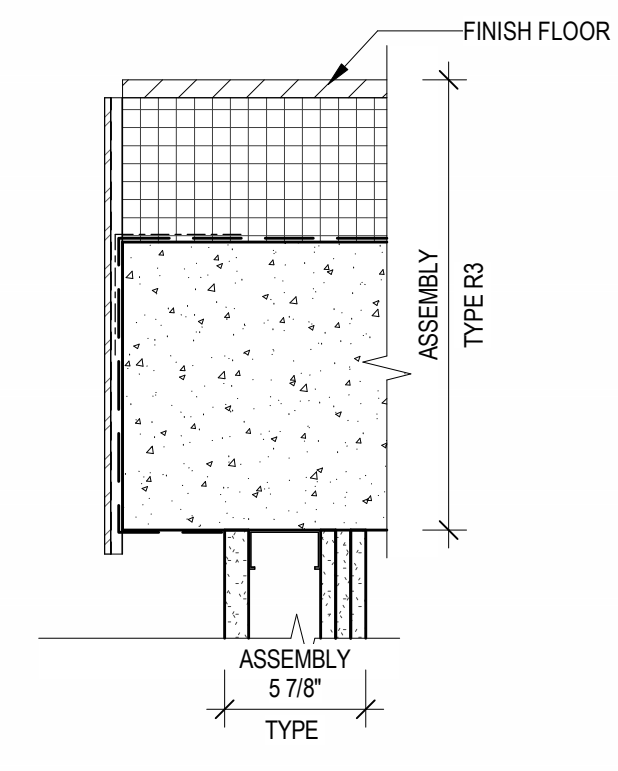
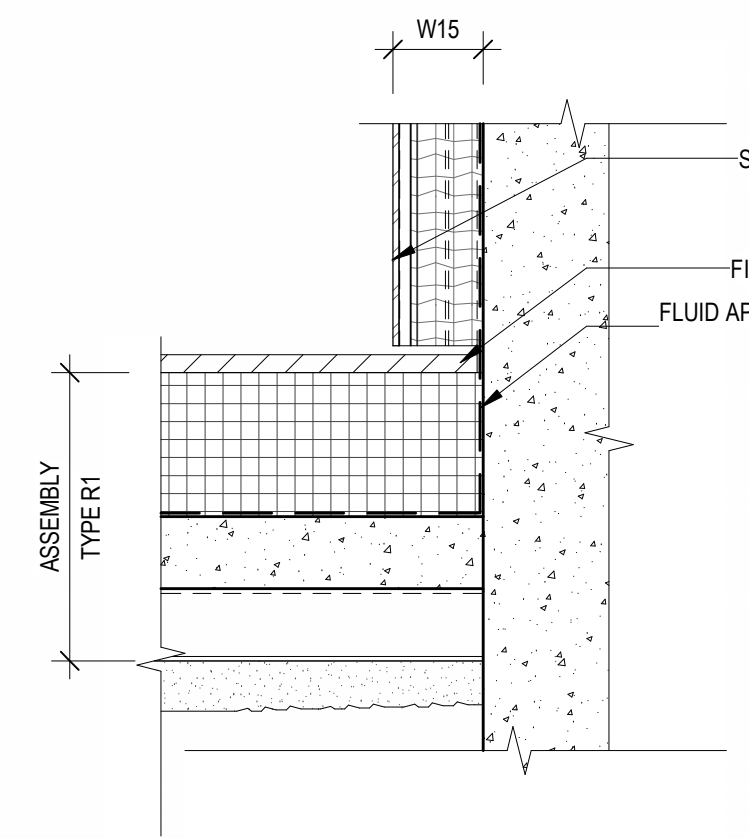


NOTES:

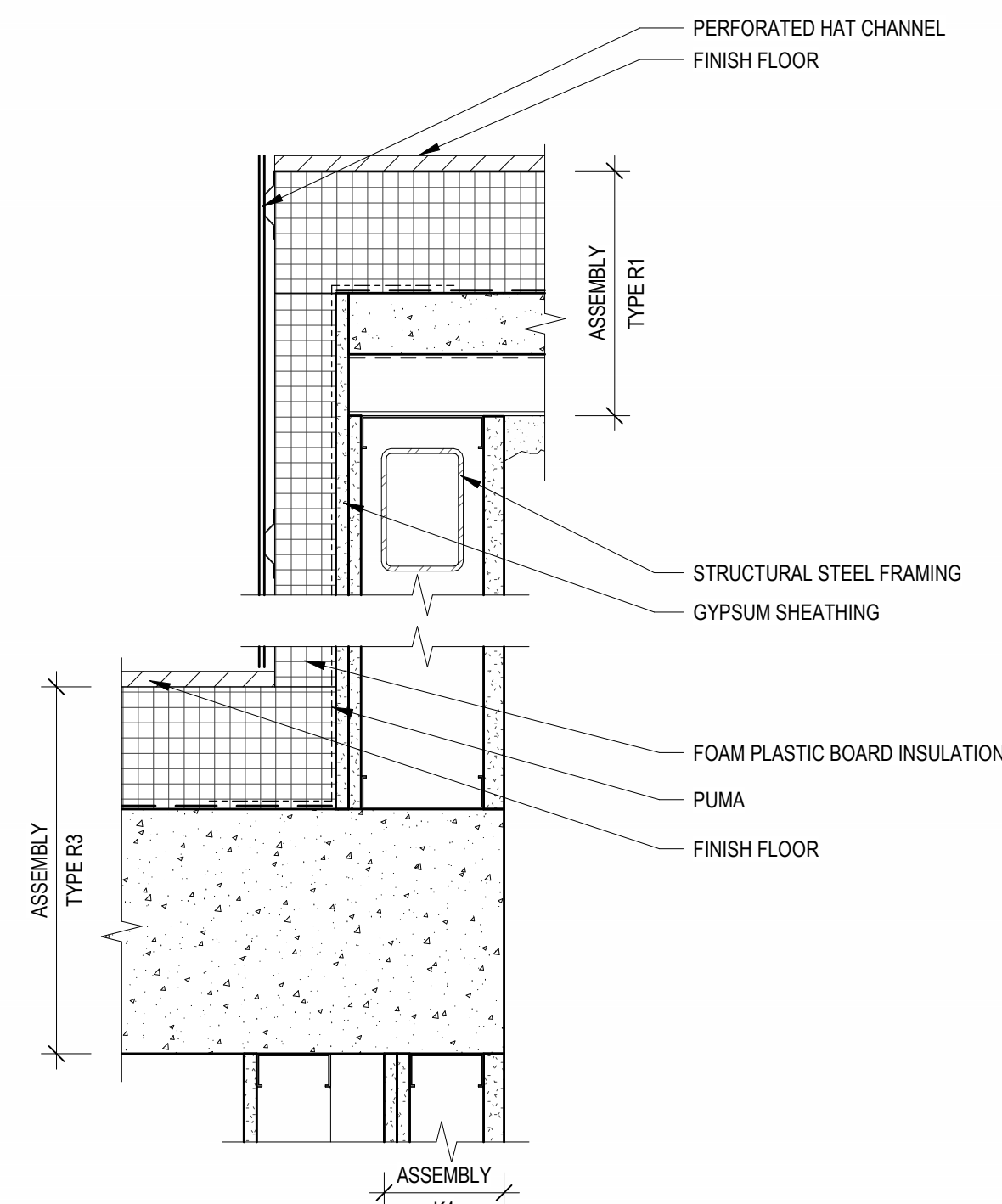
- ROOM FOR FUTURE BOILER FOR RADIANT HYDRONIC SNOWMELT SYSTEM TO BE DESIGN BUILD BY OTHERS
- BOILER ROOM TO BE HEATED FOR FREEZE PROTECTION & SPRINKLER SYSTEM.
- ACCESS DOORS TO BOILER ROOM AT MEP ROOF TO BE VENTILATED, TYP.



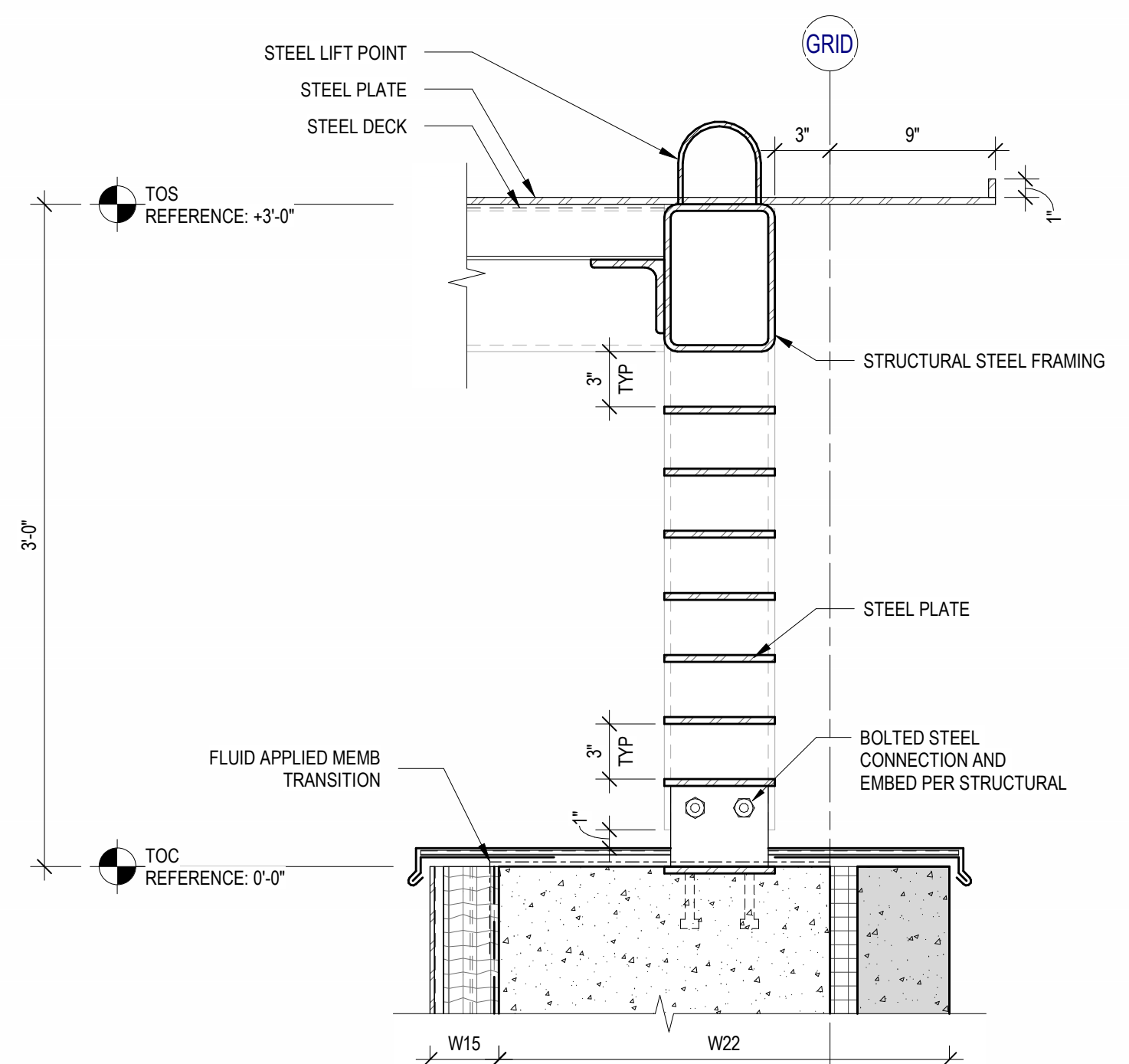
9 DETAIL SECTION - MEP PENTHOUSE PARAPET @ ELEVATOR II
SCALE: 1 1/2" = 1'-0"



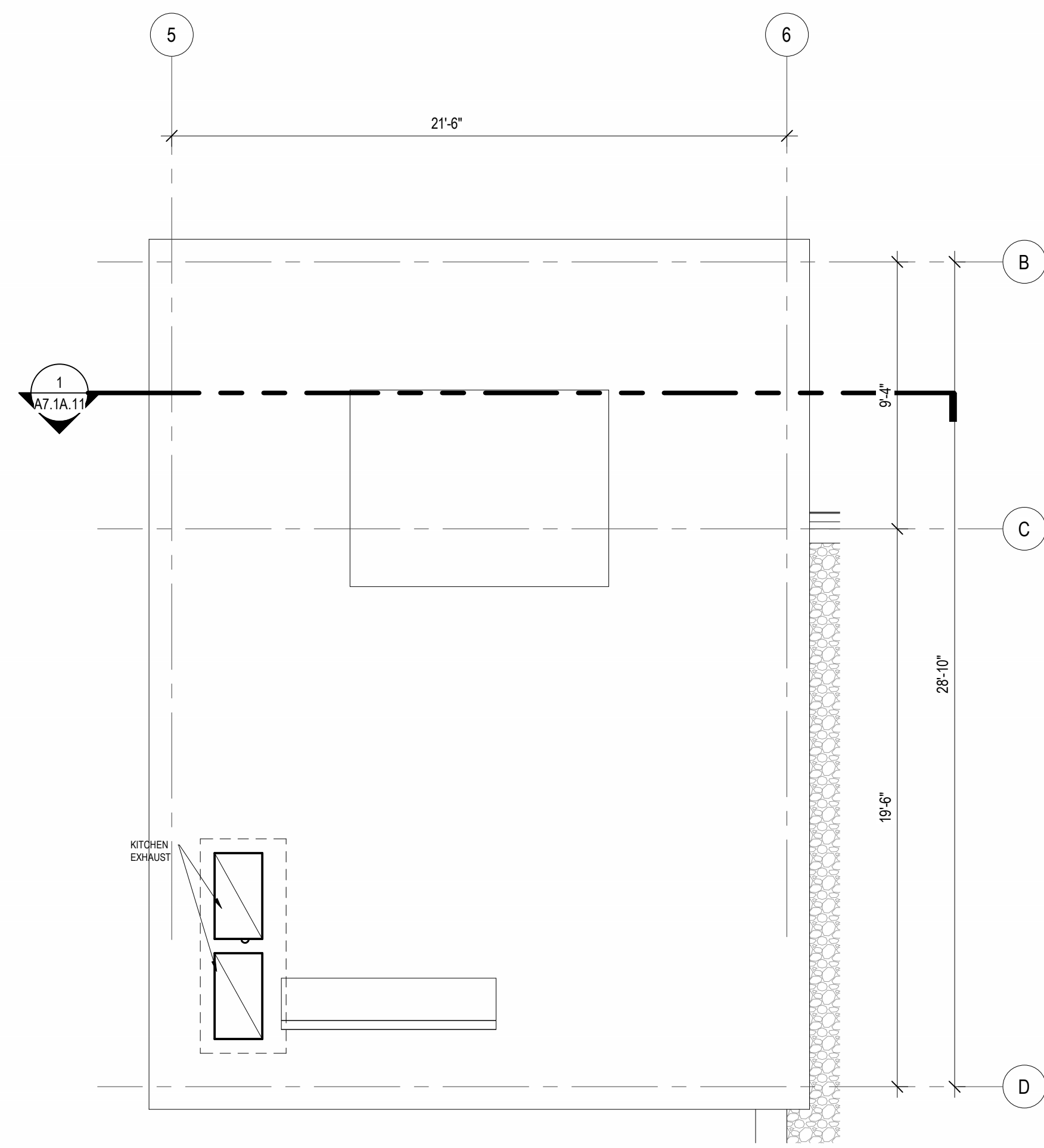
11 DETAIL SECTION - MEP PENTHOUSE PARAPET @ ELEVATOR III
SCALE: 1 1/2" = 1'-0"



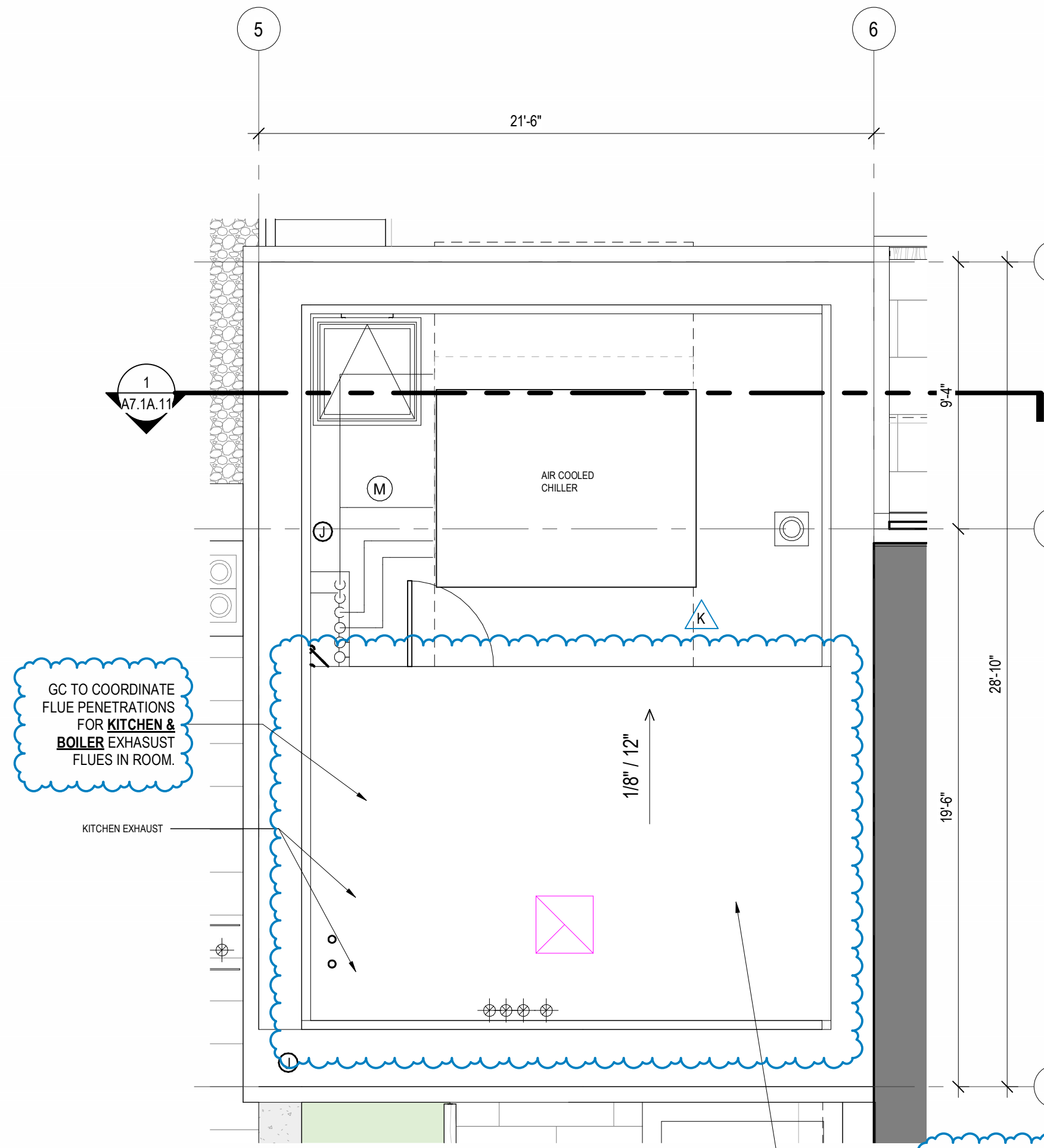
8 DETAIL SECTION - MEP PENTHOUSE PARAPET @ ELEVATOR
SCALE: 1 1/2" = 1'-0"



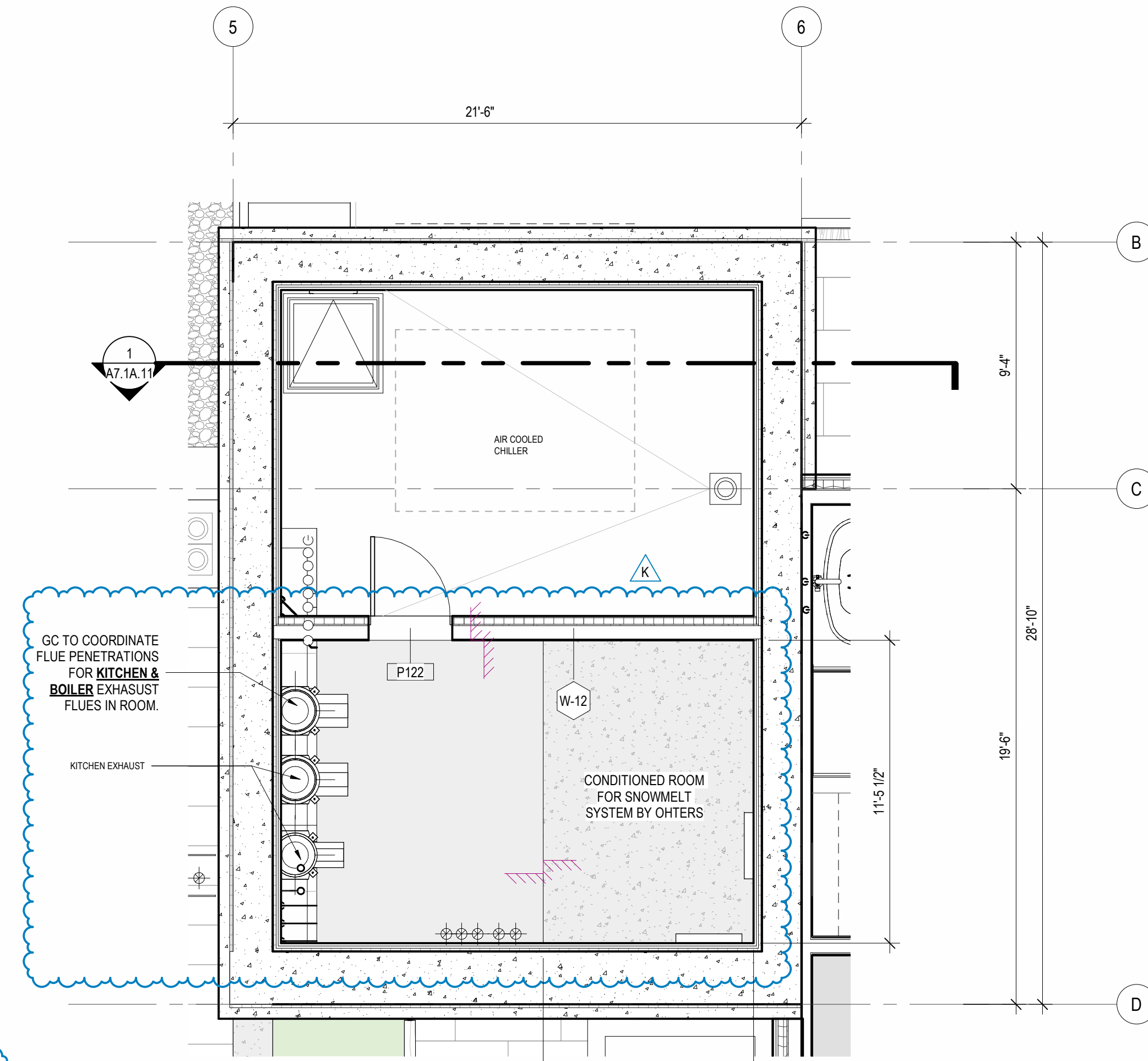
7 DETAIL SECTION - PARAPET @ MEP SCREEN
SCALE: 1 1/2" = 1'-0"



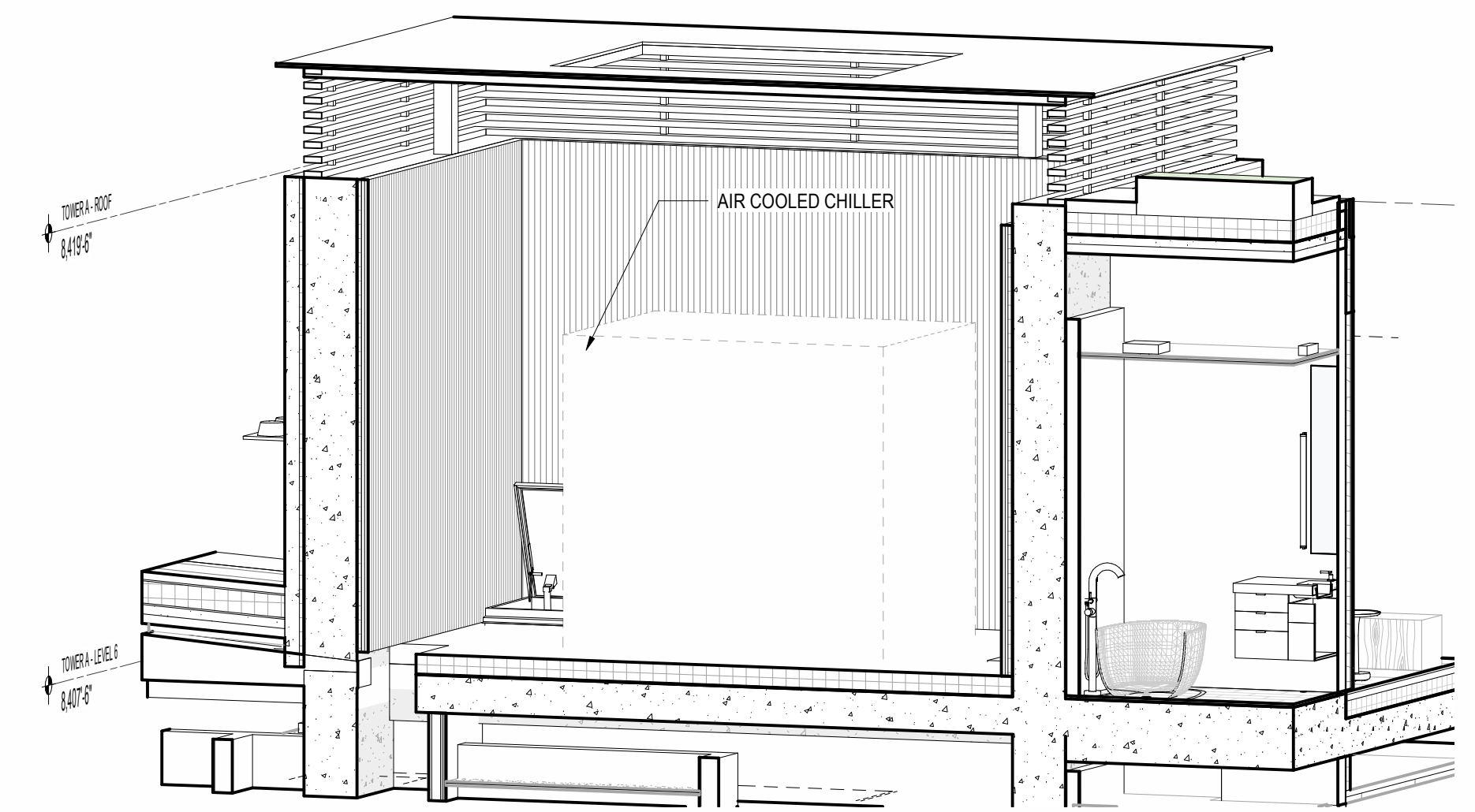
6 ENLARGED PLAN AT MEP PENTHOUSE - ROOF
SCALE: 1/4" = 1'-0"



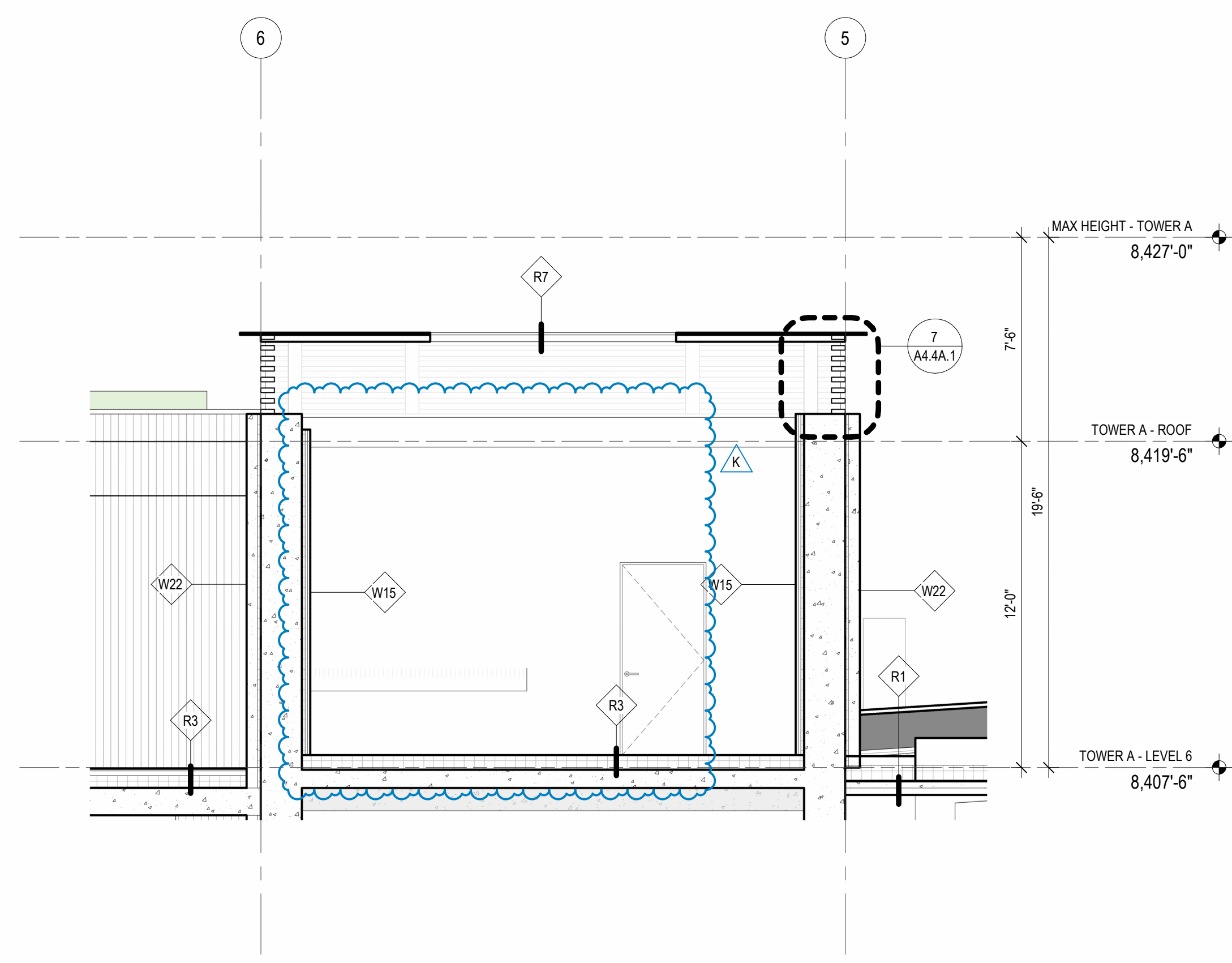
12 ENLARGED PLAN AT MEP PENTHOUSE LEVEL Copy 1
SCALE: 1/4" = 1'-0"



5 ENLARGED PLAN AT MEP PENTHOUSE LEVEL
SCALE: 1/4" = 1'-0"

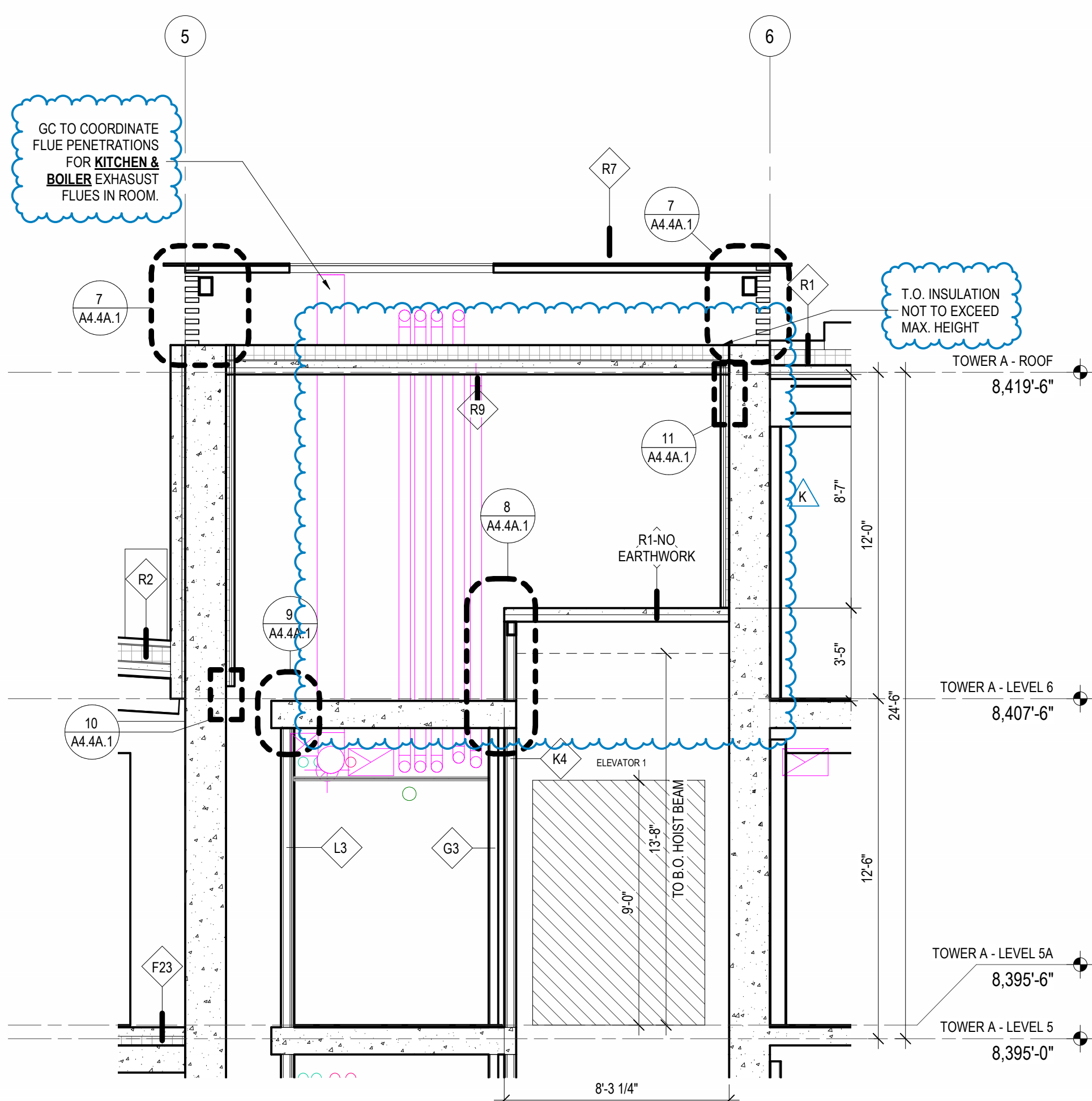


4 MEP PENTHOUSE AXO
SCALE:

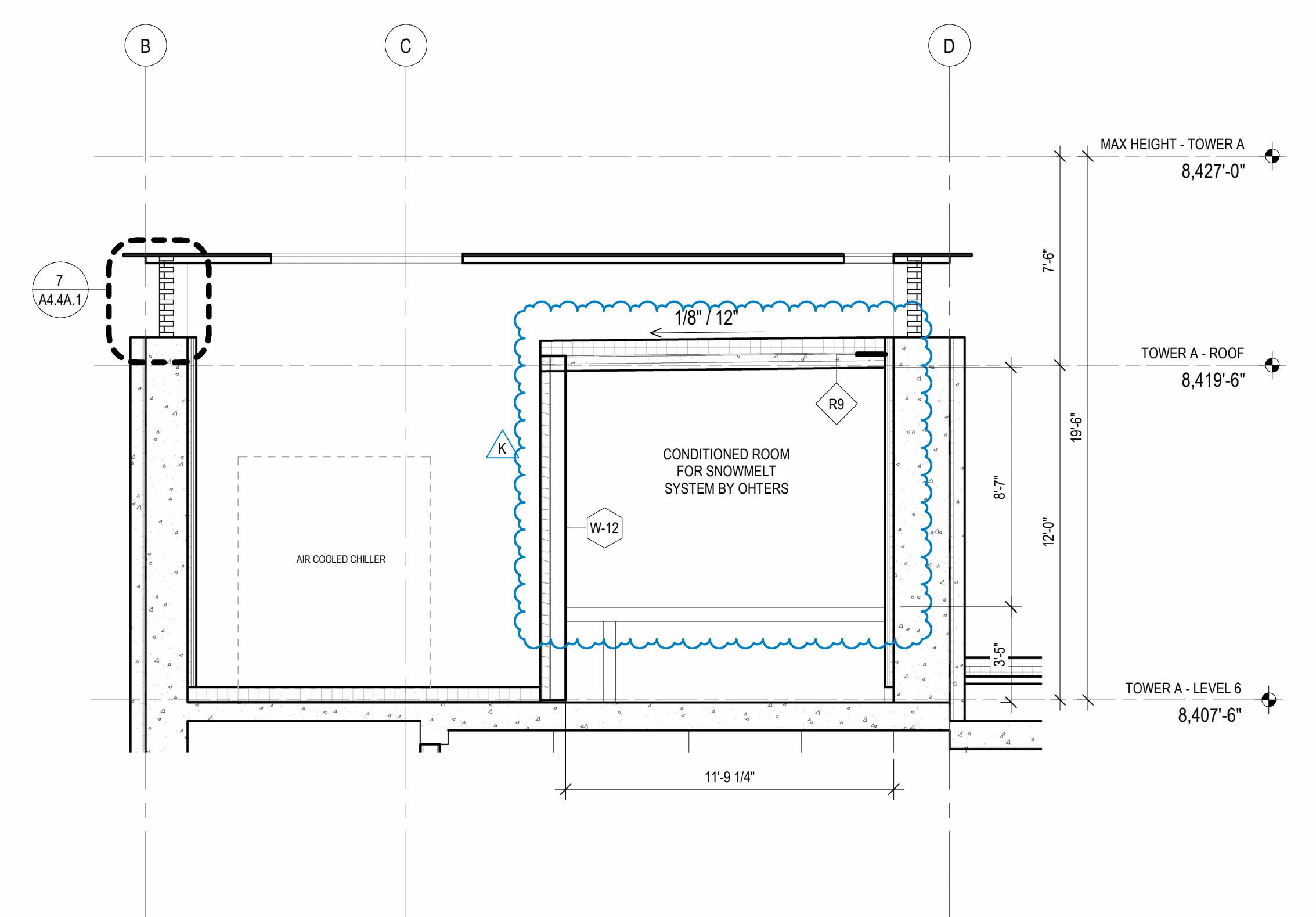


10 DETAIL SECTION - MEP PENTHOUSE SHAFT
SCALE: 1 1/2" = 1'-0"

3 SECTION - BUILDING A - LONGITUDINAL
SCALE: 1/4" = 1'-0"



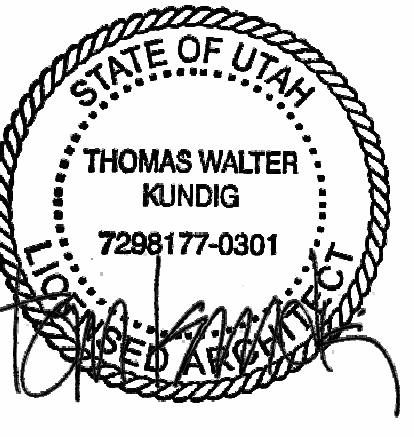
2 SECTION - BUILDING A - LONGITUDINAL 2
SCALE: 1/4" = 1'-0"



1 SECTION - BUILDING A - CROSS 1
SCALE: 1/4" = 1'-0"

SECTION GENERAL NOTES

- SEE SHEET A0.10 AND A0.11 FOR ASSEMBLIES.
- ALL FLOORS ARE TYPE F10 UNO.
- ALL CEILINGS ARE C11 UNO.
- WALL SECTIONS ARE REFERENCED FROM THE A2.20 PLAN SERIES
- REFER TO ROOF PLANS FOR SLOPE DESIGN INTENT



103 South Jackson St., Suite 200
Seattle, Washington 98104 USA
+1 206 424 1075 olsonkundig.com

Olson Kundig
SOMMET BLANC
PARK CITY, UT 84060

ASPEN GROUP
Aspen Group USA, LLC
PO Box 980022
Park City, Utah 84098

Pool Consultant
Cloward H2O
2696 N University Ave., Suite 290
Provo, UT 84604

Landscape Architect
EPG Design
6049 South High Tech Drive, Suite 100
Midvale, Utah 84047

Specifications Writer
Friday Group
88 Mainell Road
Middlebury, VT

Code Consultant
Holmes
600 1st Avenue, Suite 200A
Seattle, WA 98104

Fire Protection Engineer
Jensen Hughes
One Research Drive, Suite 305C
Westborough, MA 01581

Vertical Transportation Consultant
Lorch Bates
1515 North Creek Parkway, Suite 304
Bothell, WA 98011

Structural Engineer
Magnusson Klemencic Associates
1301 5th Ave., Suite 3200
Seattle, WA 98101

Lighting Designer
O2
1319 SE MLK Blvd., Suite 210
Portland, Oregon 97219

Building Envelope Consultant
RDH
2101 N 34th St
Seattle, WA 98103

Accessibility Consultant
Studio Pacifica
2144 Westlake Ave N, Suite F
Seattle, WA 98109

MEP Engineer
WSP USA
1001 Fourth Ave., Suite 3100
Seattle, WA 98104

principal architect: TK KM
project manager: TM, JB, SL, MD
drawn by: JF, BD
checked by: JB
job no.: 2052
date: 01/15/2025

revisions:

K 02/05/25 ASI 006.1
no. date by

IFC SET 3 OF 3
01/15/2025

TOWER A - ENLARGED
PLAN & SECTION AT
ROOF

A4.4A.1