

† 206 624 3670 dissonkunding.com

SOMMET BLANC - ABC
DEER VALLEY, UTAH

Structural + Civil Engineers
Seattle Chicago
www.mika.com
206 292 1200

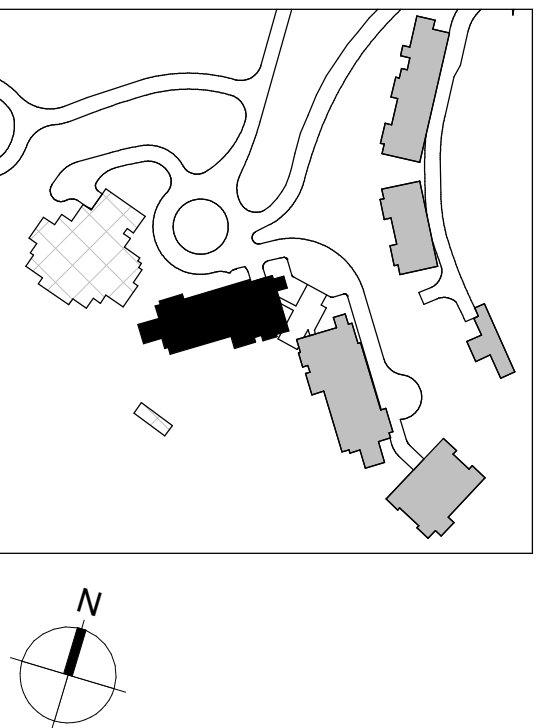
| | |
|------------|----------------|
| 01/17/2025 | ASI-006.1 |
| 04/08/2024 | IFC SET 1 OF 3 |
| 11/18/2022 | 95% CD |

date

by

05/17/2024

S2.A.02.R


$$1/8'' = 1'-0''$$

4. SEE "GENERAL NOTES" FOR REINFORCING REQUIREMENTS.
5. SEE "TYPICAL MILD SLAB DETAILS" FOR ADDITIONAL INFORMATION.
6. SLAB REINFORCING SHALL BE PLACED IN THE FOLLOWING SEQUENCE:
E-W BOTTOM BARS
N-S BOTTOM BARS
N-S TOP BARS
E-W TOP BARS
7. FOR CONTINUOUS BOTTOM BARS, LAP BARS Lsb AS REQUIRED WITH LAPS AT 1/3 THE SLAB SPAN BETWEEN ADJACENT COLUMNS.
8. TWO OF THE CONTINUOUS BOTTOM BARS ARE TO BE PLACED EACH WAY THROUGH ALL COLUMNS WITH COLUMN VERTICAL REINFORCEMENT, UNLESS NOTED OTHERWISE.
9. BOTTOM BARS CALLED OUT ARE IN ADDITION TO CONTINUOUS BOTTOM MAT.
10. (X) INDICATES STUD RAIL. STUD RAILS SHALL BE PLACED AT ALL COLUMNS. SEE "TYPICAL STUD RAIL REINFORCEMENT AT COLUMNS" DETAIL AND STUD RAIL SCHEDULE.
11. SEE "TYPICAL CONCRETE OPENINGS AND EMBEDMENTS" FOR ADDITIONAL REINFORCEMENT REQUIREMENTS. NOTIFY STRUCTURAL ENGINEER OF ANY OPENINGS NOT SHOWN ON THE STRUCTURAL DRAWINGS FOR WHICH THE TYPICAL DETAILS DO NOT APPLY. ADDITIONAL REINFORCEMENT MAY BE REQUIRED.
12. WHERE BAR LENGTH CANNOT BE ACHIEVED DUE TO SLAB EDGE, HOOK BAR.
13. WHERE NOTED AS "HOOKED", PROVIDE 90 OR 180 DEGREE HOOK AS SHOWN ON PLAN. NOTED BAR LENGTH IS LENGTH OF STRAIGHT PORTION OF BAR.
14. WHERE NOTE APPLIES, REINFORCEMENT IS TO BE PLACED WITHIN VERTICALS OF COLUMNS. REINFORCEMENT SHALL BE CENTERED IN SLAB MID-DEPTH. REINFORCEMENT SHALL MEET CENTER-TO-CENTER SPACING OF 3db BUT NOT LESS THAN 3-INCHES UNLESS NOTED OTHERWISE. LAP SPLICE IS NOT PERMITTED; PROVIDE MECHANICAL COUPLER IF NECESSARY.

| MILD BOTTOM REINFORCEMENT SCHEDULE | | |
|------------------------------------|----------------------|---------------|
| MARK | REINFORCING | REMARKS |
| MB1 | #5x20'-0" @ 12" | STAGGER 2'-0" |
| MB2 | #5x12'-0" @ 12" | STAGGER 2'-0" |
| MB4 | (3) #5x12'-0" @ 14" | STAGGER 2'-0" |
| MB5 | #5x20'-0" @ 18" | STAGGER 2'-0" |
| MB6 | #5x20'-0" @ 16" | STAGGER 2'-0" |
| MB7 | (6) #5x15'-0" @ 16" | STAGGER 2'-0" |
| MB8 | (11) #5x20'-0" @ 12" | STAGGER 3'-0" |
| MB9 | (3) #5x15'-0" @ 24" | STAGGER 2'-0" |
| MB15 | (6) #5x30'-0" @ 24" | STAGGER 3'-0" |
| MB16 | (11) #4x12'-0" @ 12" | STAGGER 3'-0" |
| MB17 | #6x5'-2" @ 24" | HOOK AT END |