

1 TOWER A - LEVEL 1 - REINFORCEMENT PLAN
1/8" = 1'-0"

REINFORCING NOTES:

- SEE "GENERAL NOTES" FOR REINFORCING REQUIREMENTS.
- SEE "TYPICAL MILD SLAB DETAILS" FOR ADDITIONAL INFORMATION.
- SLAB REINFORCING SHALL BE PLACED IN THE FOLLOWING SEQUENCE:
E-W BOTTOM BARS
N-S BOTTOM BARS
N-S TOP BARS
E-W TOP BARS
- FOR CONTINUOUS BOTTOM BARS, LAP BARS Lsb AS REQUIRED WITH LAPS AT 1/3 THE SLAB SPAN BETWEEN ADJACENT COLUMNS.
- TWO OF THE CONTINUOUS BOTTOM BARS ARE TO BE PLACED EACH WAY THROUGH ALL COLUMNS WITH COLUMN VERTICAL REINFORCEMENT, UNLESS NOTED OTHERWISE.
- BOTTOM BARS CALLED OUT ARE IN ADDITION TO CONTINUOUS BOTTOM MAT.
- [RX] INDICATES STUD RAIL. STUD RAILS SHALL BE PLACED AT ALL COLUMNS. SEE "TYPICAL STUD RAIL REINFORCEMENT AT COLUMNS" DETAIL AND STUD RAIL SCHEDULE.
- SEE "TYPICAL CONCRETE OPENINGS AND EMBEDMENTS" FOR ADDITIONAL REINFORCEMENT REQUIREMENTS. NOTIFY STRUCTURAL ENGINEER OF ANY OPENINGS NOT SHOWN ON THE STRUCTURAL DRAWINGS FOR WHICH THE TYPICAL DETAILS DO NOT APPLY. ADDITIONAL REINFORCEMENT MAY BE REQUIRED.
- WHERE BAR LENGTH CANNOT BE ACHIEVED DUE TO SLAB EDGE, HOOK BAR.
- WHERE NOTED AS "HOOKED", PROVIDE 90 OR 180 DEGREE HOOK AS SHOWN ON PLAN. NOTED BAR LENGTH IS LENGTH OF STRAIGHT PORTION OF BAR.
- * INDICATES DIAPHRAGM REINFORCEMENT THAT IS PART OF THE LATERAL FORCE RESISTING SYSTEM AND IS IN ADDITION TO OTHER BARS SHOWN. THIS REINFORCEMENT SHALL BE CENTERED IN SLAB MID-DEPTH, UNO. REINFORCEMENT SHALL MEET CENTER-TO-CENTER SPACING OF 3db BUT NOT LESS THAN 3-INCHES, UNLESS NOTED OTHERWISE. LAP Lsb AS REQUIRED, STAGGER LAPS.

12. WHERE NOTE APPLIES, REINFORCEMENT IS DIAPHRAGM REINFORCEMENT THAT IS PART OF THE LATERAL FORCE RESISTING SYSTEM AND IN ADDITION TO OTHER BARS SHOWN. REINFORCEMENT IS TO BE PLACED WITHIN VERTICALS OF COLUMNS AT GRIDS 10/F OR 11.4/F. REINFORCEMENT SHALL BE CENTERED IN SLAB MID-DEPTH. REINFORCEMENT SHALL MEET CENTER-TO-CENTER SPACING OF 3db BUT NOT LESS THAN 3-INCHES, UNLESS NOTED OTHERWISE. LAP SPLICE IS NOT PERMITTED, PROVIDE MECHANICAL COUPLER IF NECESSARY.

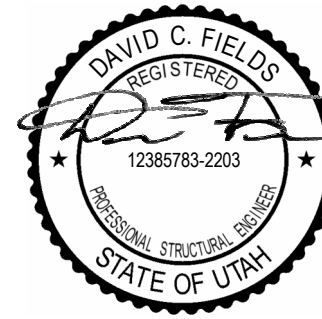
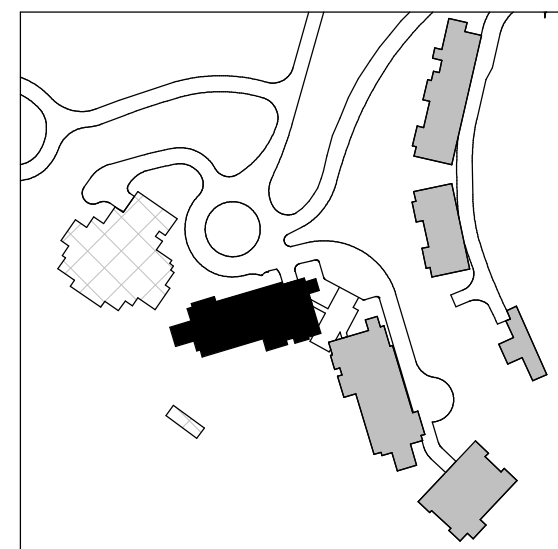
MILD TOP REINFORCEMENT SCHEDULE		
MARK	REINFORCING	REMARKS
MT1	(13) #6x20'-0" @ 10"	STAGGER 6'-0"
MT2	(13) #7x20'-0" @ 10"	STAGGER 5'-0"
MT3	(11) #7x20'-0" @ 12"	STAGGER 4'-0"
MT4	(11) #6x20'-0" @ 12"	STAGGER 4'-0"
MT5	(13) #5x15'-0" @ 10"	STAGGER 4'-0"
MT6	(11) #6x15'-0" @ 12"	STAGGER 4'-0"
MT7	(15) #7x15'-0" @ 9"	STAGGER 3'-0"
MT8	(6) #5x15'-0" @ 12"	STAGGER 3'-0"
MT9	(6) #7x15'-0" @ 12"	STAGGER 3'-0"
MT11	(11) #5x12'-0" @ 12"	STAGGER 2'-0"
MT12	(16) #8x20'-0" @ 8"	STAGGER 5'-0"
MT13	(21) #8x20'-0" @ 6"	STAGGER 5'-0"
MT14	(21) #7x20'-0" @ 6"	STAGGER 5'-0"
MT15	(11) #5x15'-0" @ 12"	STAGGER 3'-0"
MT16	(11) #4x12'-0" @ 12"	STAGGER 3'-0"
MT17	(11) #4x15'-0" @ 12"	STAGGER 3'-0"

MILD TOP REINFORCEMENT SCHEDULE		
MARK	REINFORCING	REMARKS
MT18	(16) #8x20'-0" @ 8"	STAGGER 5'-0"
MT30	#5x20'-0" @ 12"	STAGGER 3'-0"
MT31	#5x20'-0" @ 10"	STAGGER 2'-0"
MT32	#5x15'-0" @ 12"	STAGGER 2'-0"
MT33	#5x12'-0" @ 12"	STAGGER 2'-0"
MT34	#5x20'-0" @ 12"	STAGGER 4'-0"
MT35	#5x12'-0" @ 12"	STAGGER 1'-0"
MT36	#5x7'-6" @ 12"	STAGGER 0'-0"
MT37	#4x12'-0" @ 12"	STAGGER 1'-0"
MT38	#4x15'-0" @ 12"	STAGGER 1'-0"
MT39	#5x15'-0" @ 8"	STAGGER 2'-0"
MT40	#6x20'-0" @ 12"	STAGGER 4'-0"
MT42	#6x15'-0" @ 12"	STAGGER 2'-0"
MT43	#7x15'-0" @ 6"	STAGGER 3'-0"
MT50	(6) #5x24'-2" @ 12"	HOOK AT END

MILD TOP REINFORCEMENT SCHEDULE		
MARK	REINFORCING	REMARKS
MT51	(11) #5x6'-8" @ 12"	HOOK AT END
MT52	(11) #5x11'-2" @ 12"	HOOK AT END
MT53	(7) #6x11'-0" @ 12"	HOOK AT END
MT54	(11) #5x14'-2" @ 12"	HOOK AT END
MT55	(16) #6x14'-0" @ 8"	HOOK AT END
MT56	(6) #5x14'-2" @ 12"	HOOK AT END
MT57	(6) #5x9'-0" @ 12"	HOOK AT END
MT58	(11) #6x14'-0" @ 12"	HOOK AT END
MT60	(16) #7x10'-10" @ 8"	HOOK AT END
MT61	(11) #5x14'-2" @ 12"	HOOK AT END
MT62	(11) #4x11'-4" @ 12"	HOOK AT END
MT63	(11) #4x14'-4" @ 12"	HOOK AT END
MT64	(11) #4x19'-4" @ 12"	HOOK AT END
MT65	(11) #4x6'-10" @ 12"	HOOK AT END
MT66	(16) #7x18'-10" @ 8"	HOOK AT END

MILD TOP REINFORCEMENT SCHEDULE		
MARK	REINFORCING	REMARKS
MT80	#5 @ 12"	HOOK BOTH ENDS
MT81	#5x14'-2" @ 12"	HOOK AT END
MT82	#6x29'-0" @ 12"	HOOK AT END
MT83	#5x19'-2" @ 12"	HOOK AT END
MT84	#5x6'-8" @ 12"	HOOK AT END
MT85	#5x9'-2" @ 12"	HOOK AT END
MT86	#5x11'-2" @ 12"	HOOK AT END
MT87	#6x11'-0" @ 12"	HOOK AT END
MT88	#4x14'-4" @ 12"	HOOK AT END
MT89	#4x6'-10" @ 12"	HOOK AT END
MT90	#4 @ 12"	HOOK BOTH ENDS
MT91	#4x9'-4" @ 12"	HOOK AT END
MT92	#6x14'-0" @ 12"	HOOK AT END
MT93	#5x19'-2" @ 10"	HOOK AT END
MT97	#7x10'-10" @ 12"	HOOK AT END

MILD BOTTOM REINFORCEMENT SCHEDULE		
MARK	REINFORCING	REMARKS
MB1	#5x20'-0" @ 12"	STAGGER 2'-0"
MB2	#5x12'-0" @ 24"	STAGGER 2'-0"
MB4	(3) #5x12'-0" @ 14"	STAGGER 2'-0"
MB5	#5x20'-0" @ 18"	STAGGER 2'-0"
MB6	#5x20'-0" @ 16"	STAGGER 2'-0"
MB7	(6) #5x15'-0" @ 16"	STAGGER 2'-0"
MB8	(11) #5x20'-0" @ 12"	STAGGER 3'-0"
MB9	(3) #5x15'-0" @ 24"	STAGGER 2'-0"
MB15	(6) #5x30'-0" @ 24"	STAGGER 3'-0"
MB16	(11) #4x12'-0" @ 12"	STAGGER 3'-0"
MB17	#6x5'-2" @ 24"	HOOK AT END



Reserved for permit stamp

159 South Jackson St., Suite 800
Seattle, Washington 98104 USA
+1 206 624 8870 olsonkundig.com

Olson Kundig

PROJECT
SOMMET BLANC - ABC
DEER VALLEY, UTAH

MAGNUSSON
KLEMENCIC
ASSOCIATES

Structural + Civil Engineers
Seattle Chicago
www.mka.com
206 292 1200

principal architect _____
project manager _____
drawn by _____
checked by _____
job no. 20052
date 05/17/2024
revisions: _____

6 01/17/2025 AS-006.1
3 8/19/2024 AS-004
04/08/2024 IFC SET 1 OF 3
11/18/2022 95% CD
no. date by

IFC SET 2 OF 3

05/17/2024

TOWER A LEVEL 1
REINFORCING
PLAN

S2.A.11.R