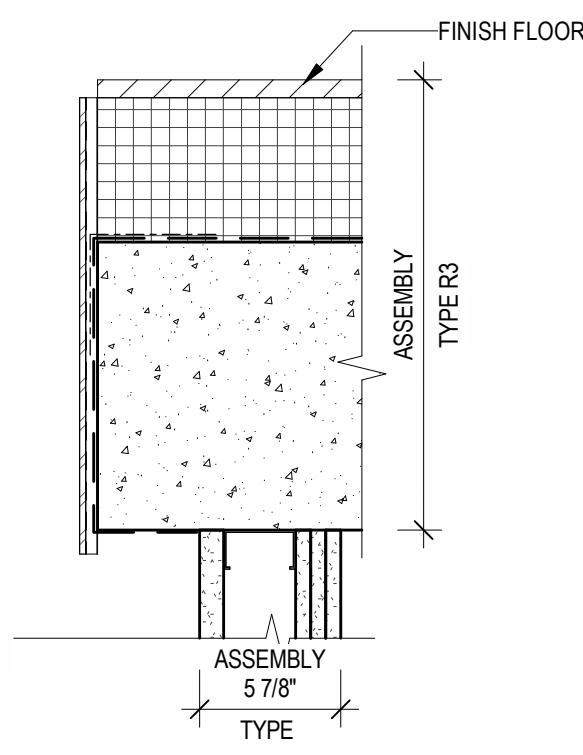
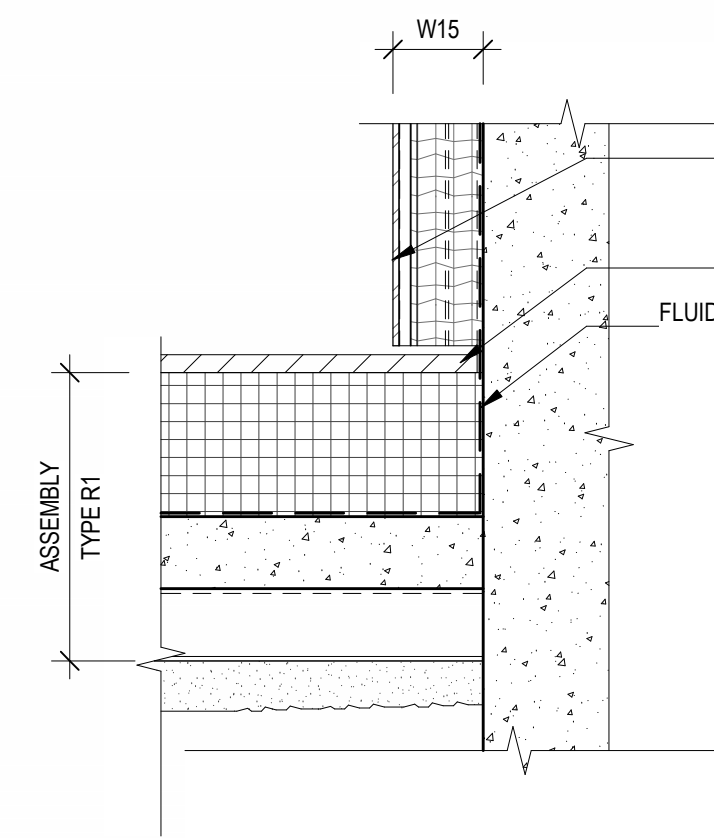


NOTES:

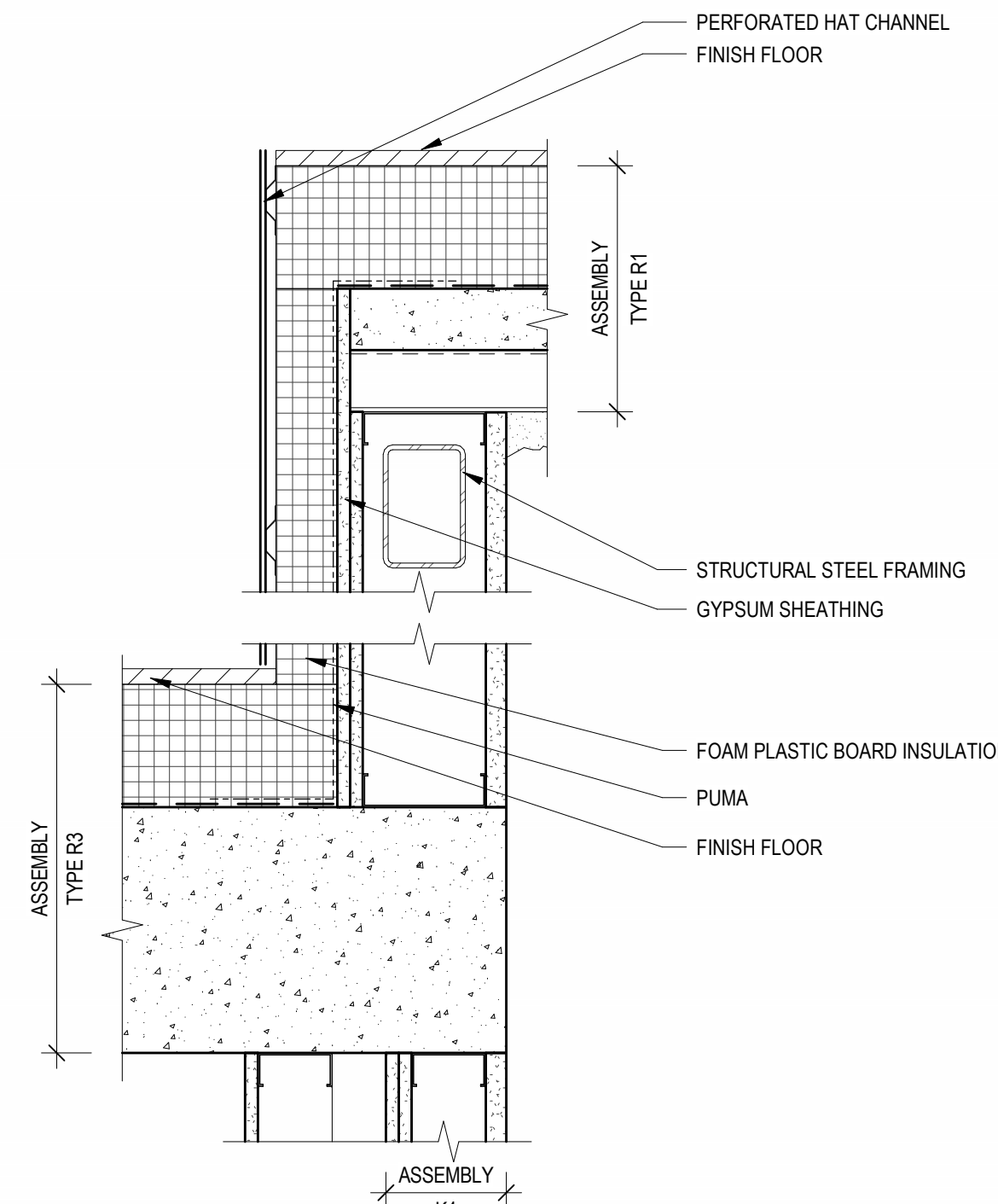
1. ROOM FOR FUTURE BOILER FOR RADIANT HYDRONIC SNOWMELT SYSTEM TO BE DESIGN BUILD BY OTHERS
2. BOILER ROOM TO BE HEATED FOR FREEZE PROTECTION & SPRINKLER SYSTEM.
3. ACCESS DOORS TO BOILER ROOM AT MEP ROOF TO BE VENTILATED, TYP.



9 DETAIL SECTION - MEP PENTHOUSE PARAPET @ ELEVATOR II
SCALE: 1 1/2" = 1'-0"



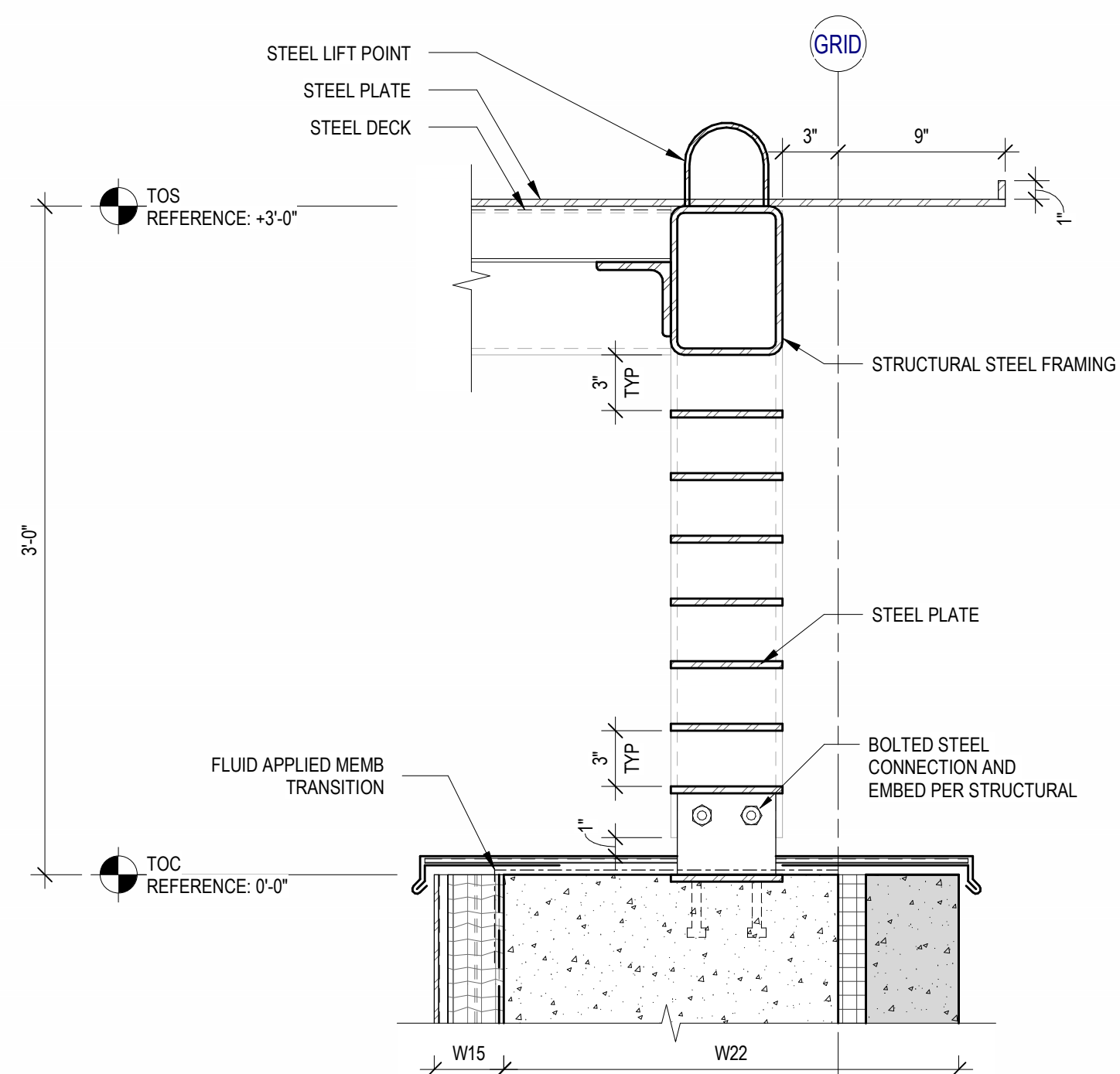
11 DETAIL SECTION - MEP PENTHOUSE PARAPET @ ELEVATOR III
SCALE: 1 1/2" = 1'-0"



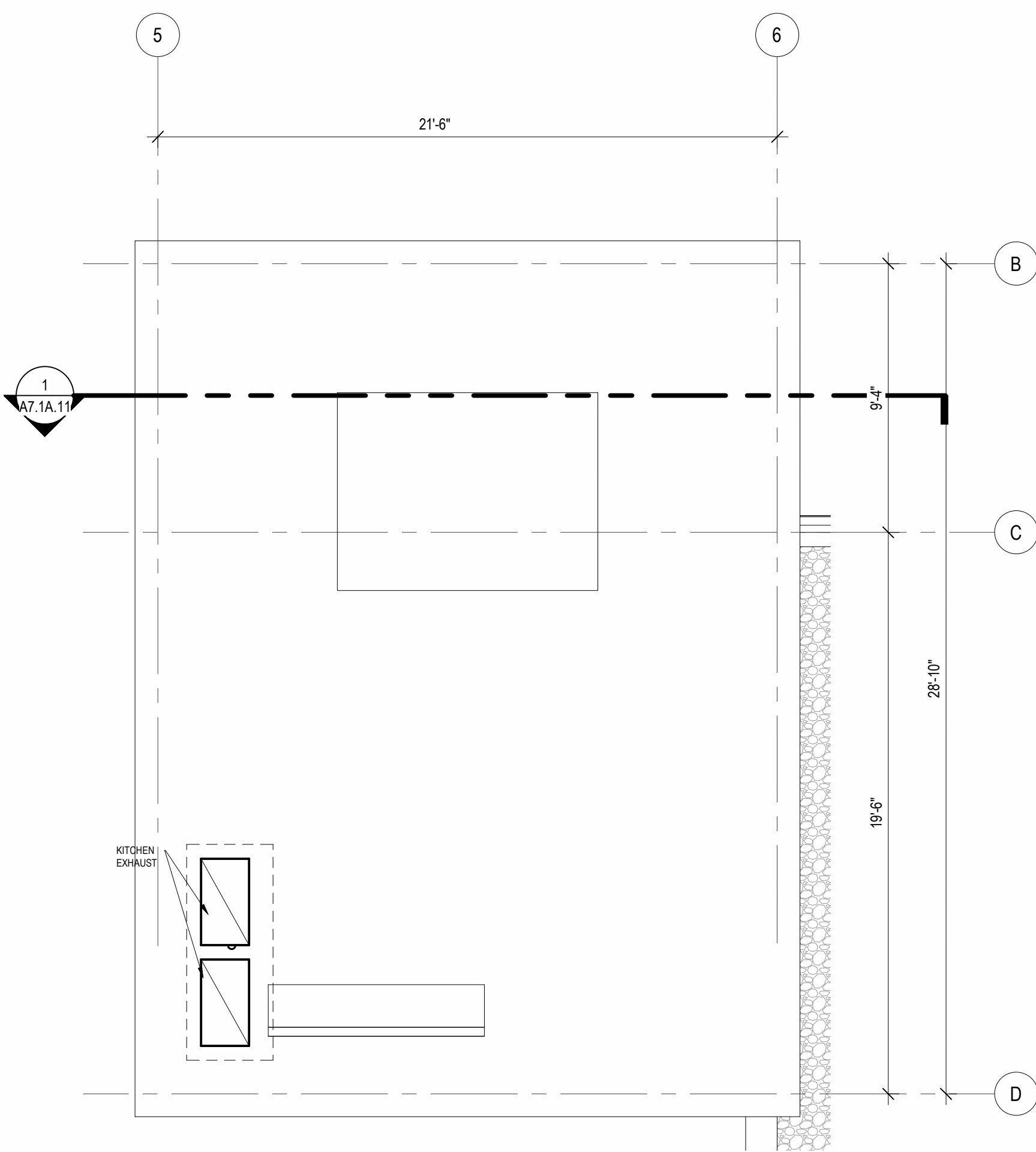
8 DETAIL SECTION - MEP PENTHOUSE PARAPET @ ELEVATOR
SCALE: 1 1/2" = 1'-0"

SECTION GENERAL NOTES

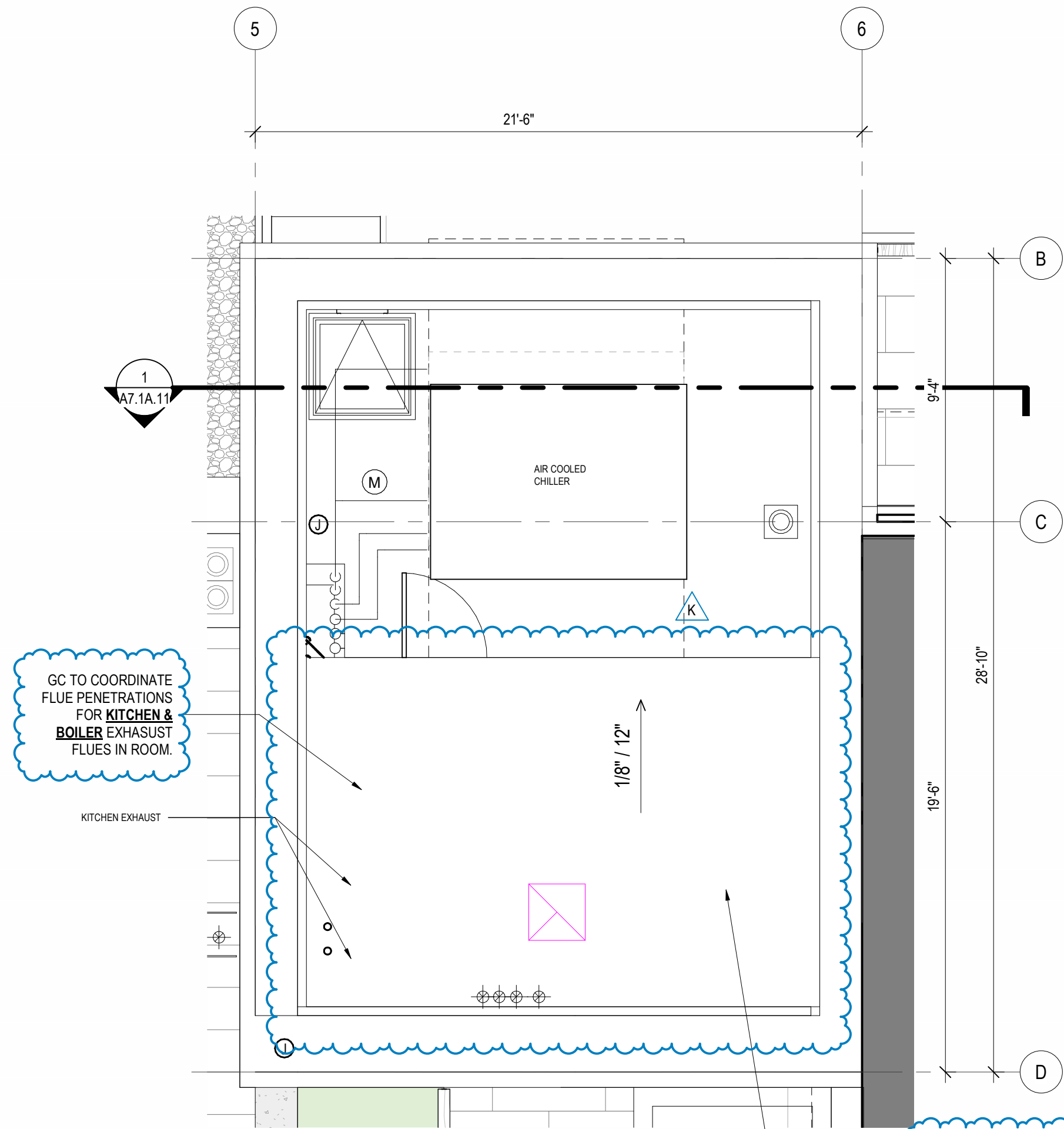
1. SEE SHEET A0.10 AND A0.11 FOR ASSEMBLIES.
2. ALL FLOORS ARE TYPE F10 UNO.
3. ALL CEILINGS ARE C11 UNO.
4. WALL SECTIONS ARE REFERENCED FROM THE A2.20 PLAN SERIES
5. REFER TO ROOF PLANS FOR SLOPE DESIGN INTENT



7 DETAIL SECTION - PARAPET @ MEP SCREEN
SCALE: 1 1/2" = 1'-0"



6 ENLARGED PLAN AT MEP PENTHOUSE - ROOF
SCALE: 1/4" = 1'-0"



12 ENLARGED PLAN AT MEP PENTHOUSE LEVEL Copy 1
SCALE: 1/4" = 1'-0"

