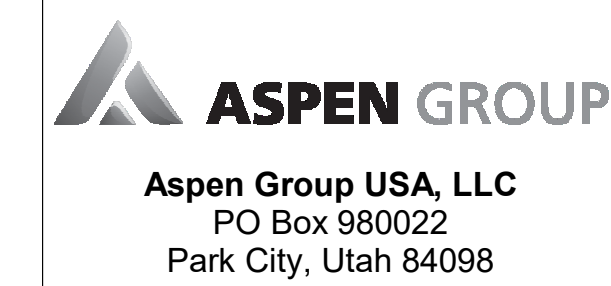


103 South Jackson St., Suite 200
Seattle, Washington 98104 USA
+1 206 451 5971 olsonkunding.com

Olson Kundig

SOMMET BLANC
8500 MARSA C AVE
PARK CITY, UT 84060



Pool Consultant
Cloward H2O
2696 N University Ave., Suite 200
Provo, UT 84604

Landscape Architect
EPG Design
6940 South High Tech Drive, Suite 100
Midvale, Utah 84047

Specifications Writer
Friday Group
88 Mainelli Road
Middlebury, VT

Code Consultant
Holmes
600 1st Avenue, Suite 200A
Seattle, WA 98104

Fire Protection Engineer
Jensen Hughes
One Research Drive, Suite 305C
Westborough, MA 01581

Vertical Transportation Consultant
Lerch Bates
19515 North Creek Parkway, Suite 304
Bothell, WA 98011

Structural Engineer
Magnusson Klemencic Associates
1301 5th Ave, Suite 3200
Seattle, WA 98101

Lighting Designer
O-
1319 SE MLK Blvd, Suite 210
Portland, Oregon 97219

Building Envelope Consultant
RDH
2101 N 34th St
Seattle, WA 98103

Accessibility Consultant
Studio Pacifica
2144 Westlake Ave N, Suite F
Seattle, WA 98109

MEP Engineer
WSP USA
1001 Fourth Ave., Suite 3100
Seattle, WA 98154

principal architect TK, KM
project manager TM, JB, SL, MD
drawn by SK, SS, JR, CP, EA
JF, BD

checked by JB
job no. 20552
date 11/25/24

revisions:

K 02/05/25 ASI 006.1
no. date by

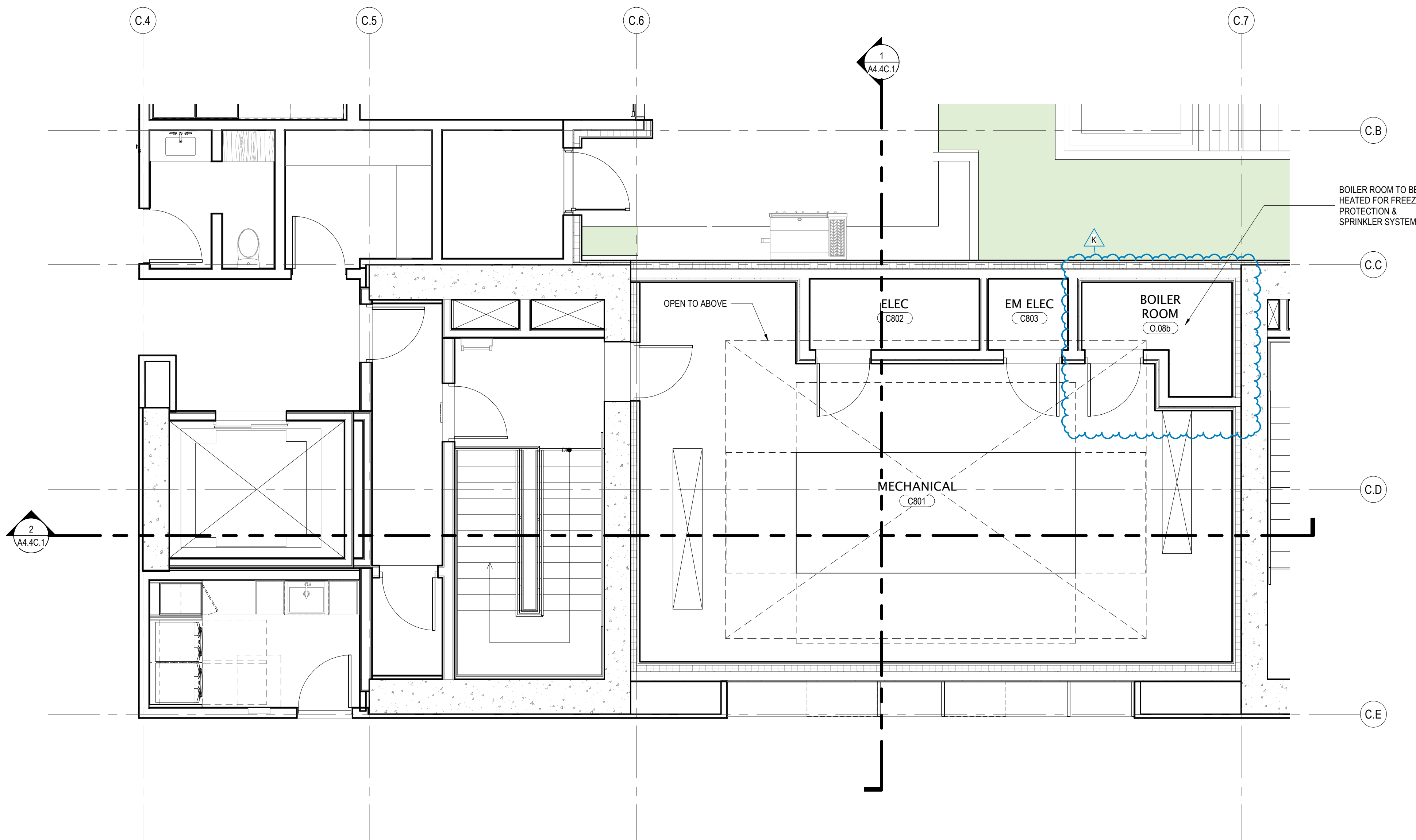
IFC SET 3 OF 3
11/25/24

TOWER C - ENLARGED
PLAN & SECTION -
TOWER C ROOF

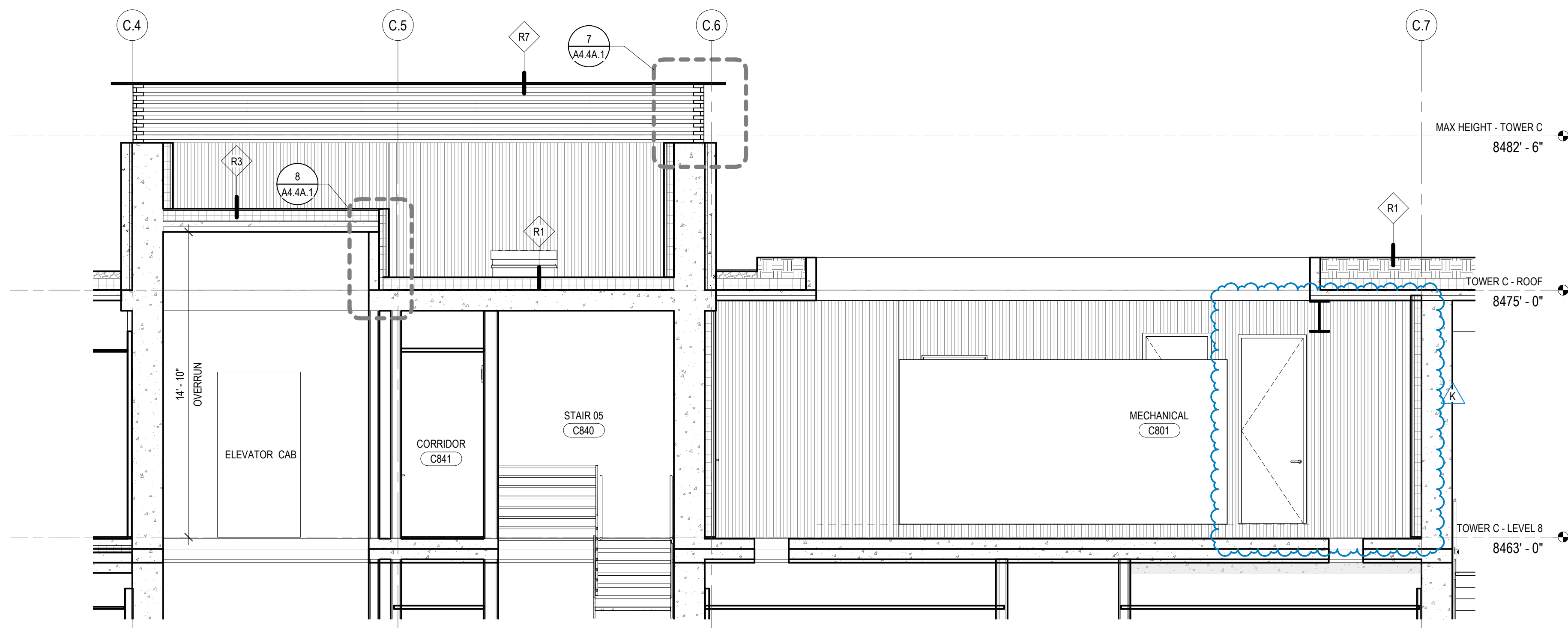
A4.4C.1

NOTES:

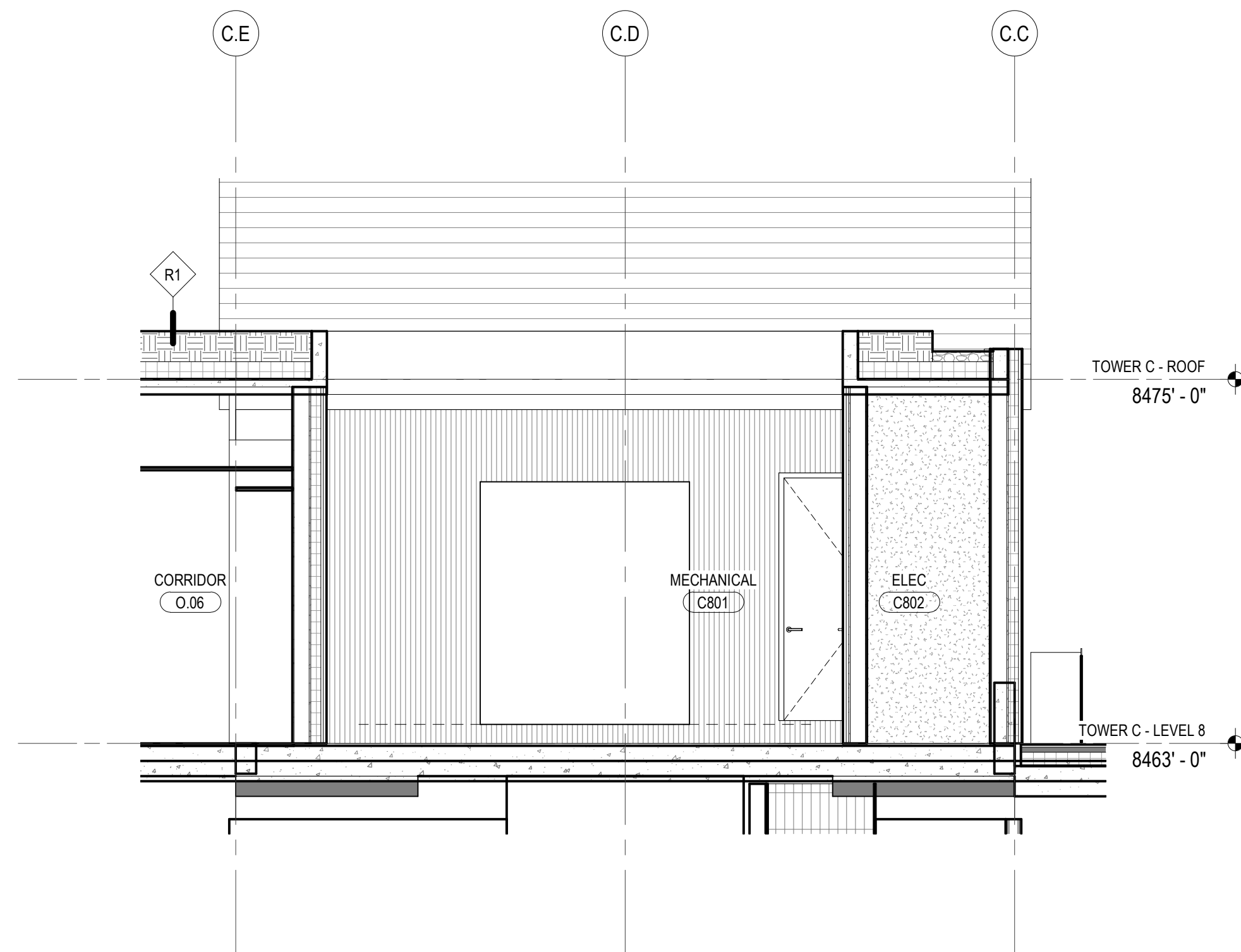
1. ROOM FOR FUTURE BOILER FOR RADIANT HYDRONIC SNOWMELT SYSTEM TO BE DESIGN BUILD BY OTHERS
2. BOILER ROOM TO BE HEATED FOR FREEZE PROTECTION & SPRINKLER SYSTEM.
3. ACCESS DOORS TO BOILER ROOM AT MEP ROOF TO BE VENTILATED, TYP.



4 LEVEL 8 - MECH ROOM
SCALE: 1/4" = 1'-0"



2 SECTION @ ROOF MECH RM - LONGITUDINAL
SCALE: 1/4" = 1'-0"



1 SECTION @ ROOF MECH RM - CROSS
SCALE: 1/4" = 1'-0"