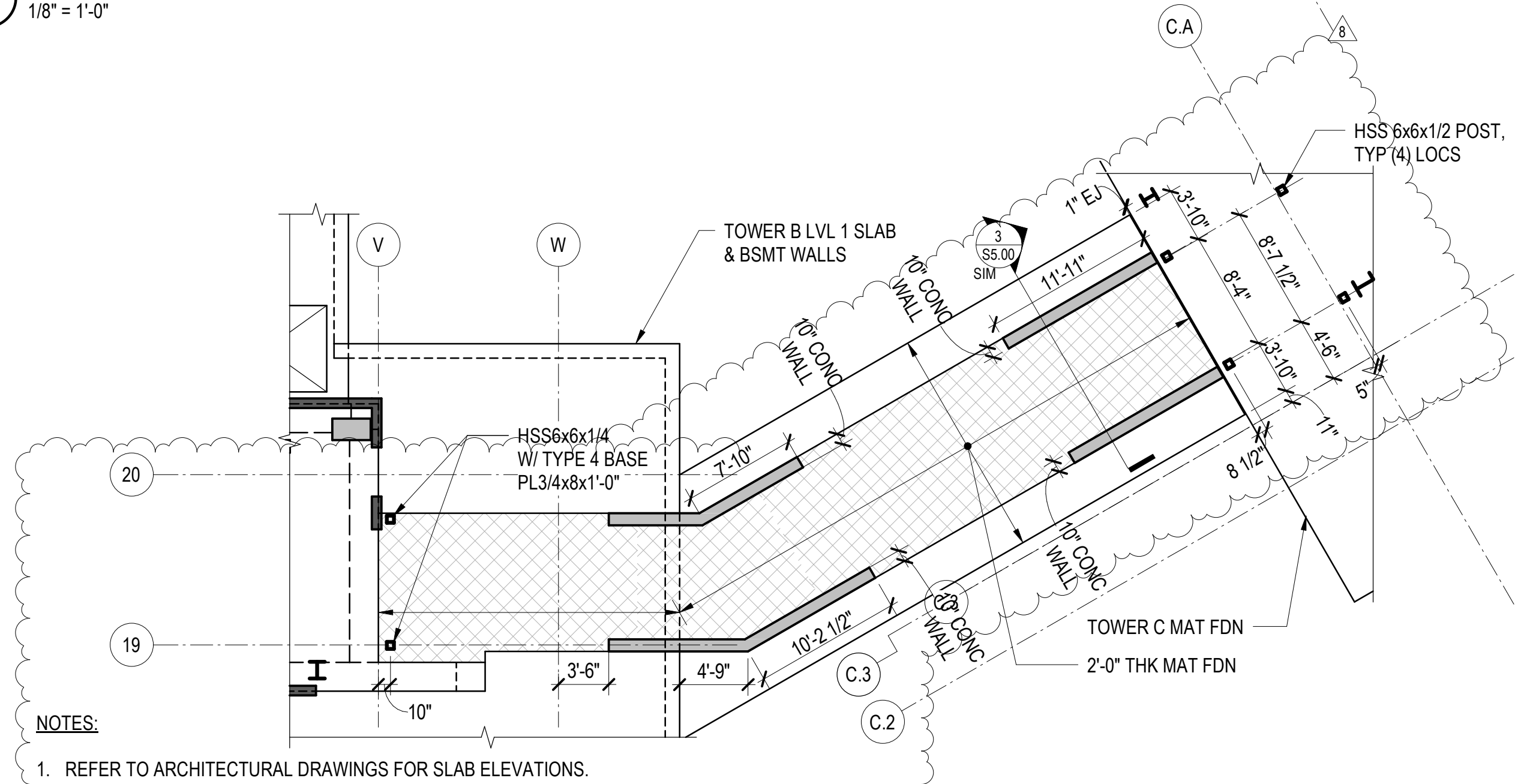
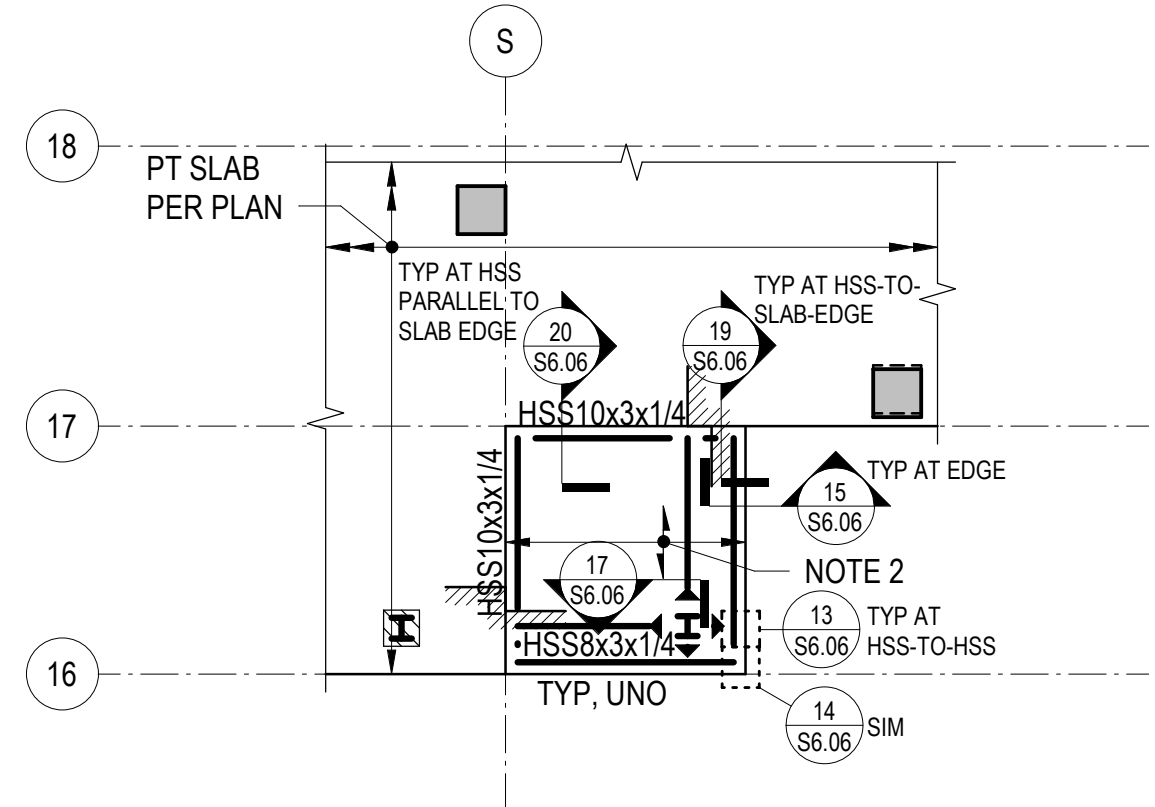


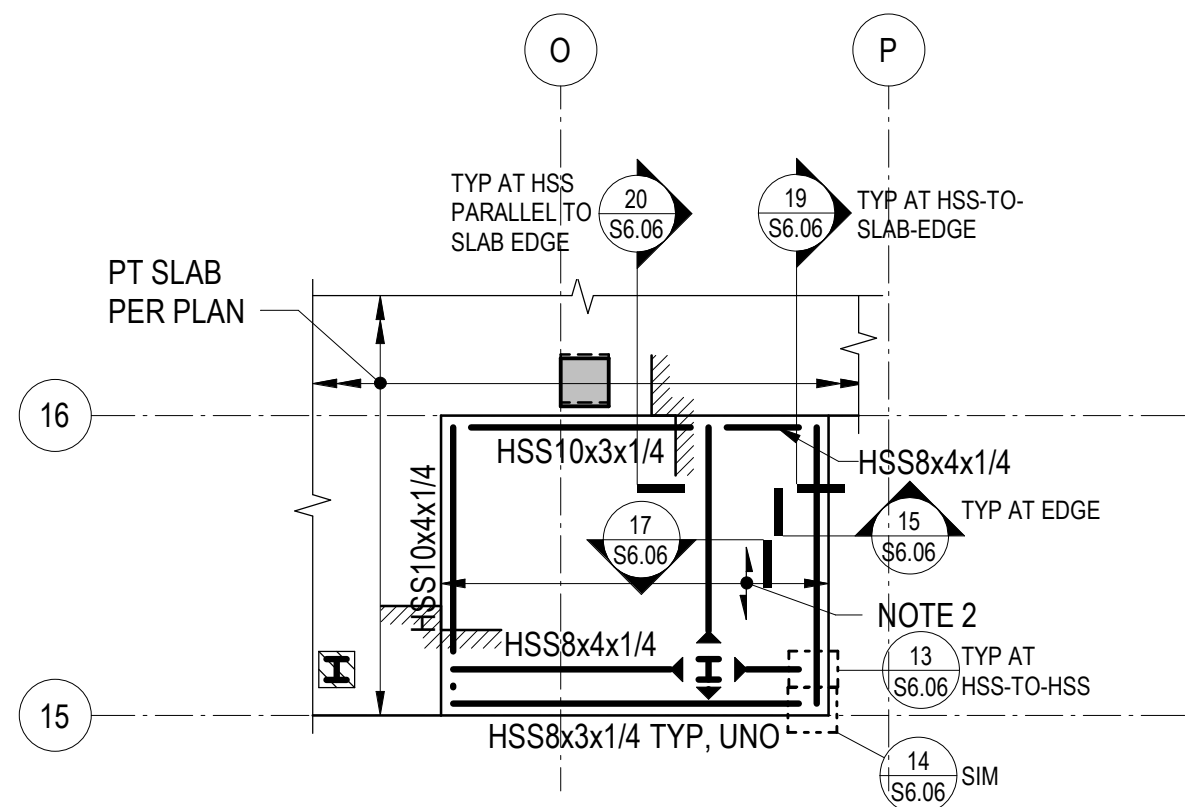
1 PARTIAL PLAN - BC CONNECTOR ROOF  
1/8" = 1'-0"



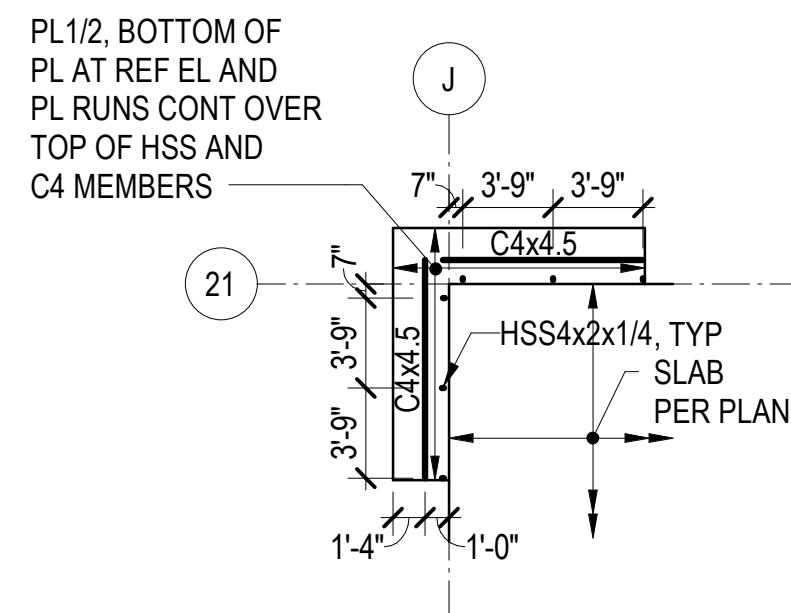
6 PARTIAL PLAN - BC CONNECTOR BASE  
1/8" = 1'-0"



11 PARTIAL PLAN - TYPE 1B BALCONY  
1/8" = 1'-0"

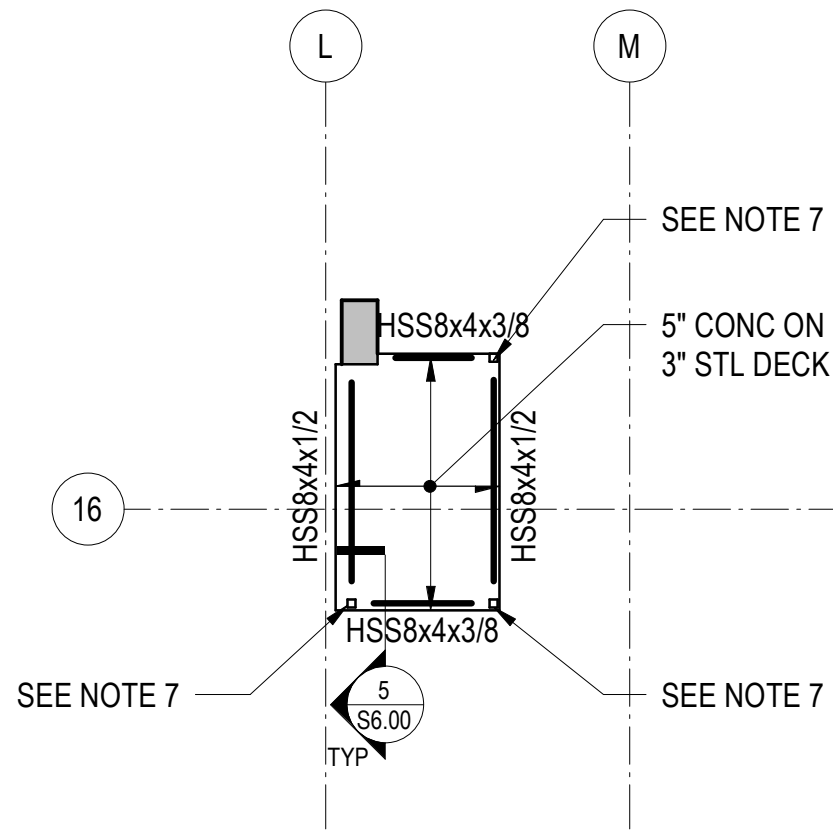


12 PARTIAL PLAN - TYPE 2B BALCONY  
1/8" = 1'-0"



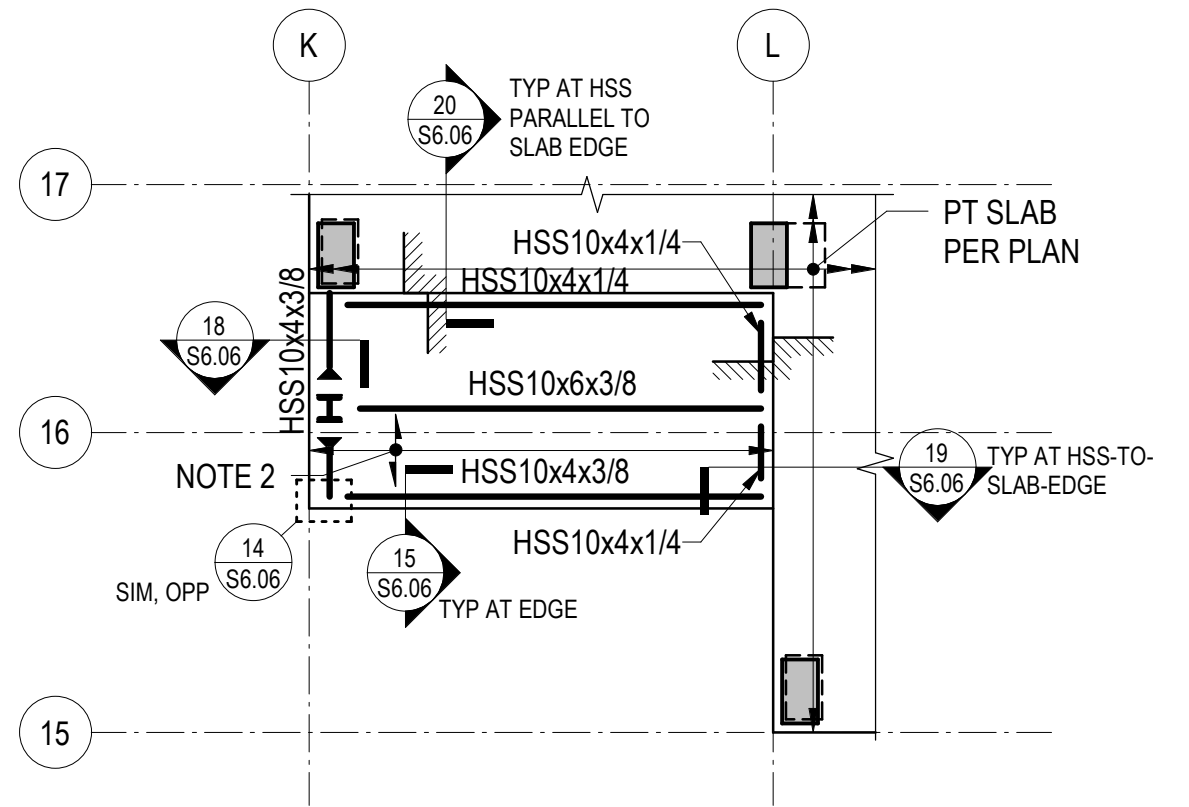
- NOTES:
- REFERENCE FLOOR ELEVATIONS ARE:  
TOWER B LEVEL 5: 8412'-0"  
TOWER B LEVEL 7: 8436'-6"  
TOP OF STEEL IS AT THE REFERENCE FLOOR ELEVATION UNLESS NOTED OTHERWISE.
  - SEE ARCHITECTURAL DETAILS FOR ADDITIONAL INFORMATION.

17 PARTIAL PLAN - TOWER B NORTH SUNSHADES  
1/8" = 1'-0"



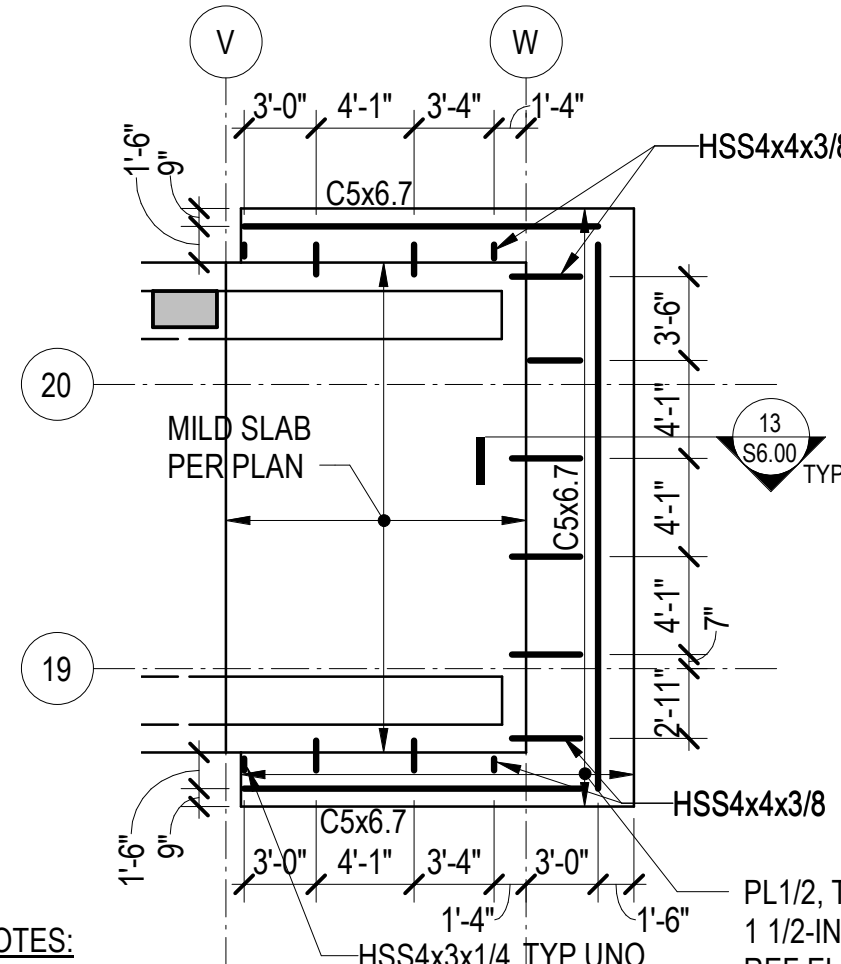
- NOTES:
- REFERENCE FLOOR ELEVATION IS 8340'-0". TOP OF SLAB ON STEEL DECK IS AT THE REFERENCE ELEVATION UNLESS NOTED OTHERWISE. SEE ARCHITECTURAL DRAWINGS FOR DRAINAGE SLOPES NOT SHOWN.
  - STRUCTURAL SLAB IS 5 INCHES OF NORMALWEIGHT CONCRETE ON 3-INCH COMPOSITE STEEL DECK UNLESS NOTED OTHERWISE. REINFORCE PER SECTION ON PLAN. REINFORCING SHOWN ON THE PLAN AND IN THE TYPICAL DETAILS IS IN ADDITION TO THIS REINFORCING.
  - REFERENCE TOP OF STEEL IS AT THE BOTTOM OF SLAB ON STEEL DECK UNLESS NOTED OTHERWISE.
  - COORDINATE LOCATION OF ALL EMBEDS WITH MECHANICAL, ELECTRICAL, PLUMBING, AND EXTERIOR WALL SYSTEMS PRIOR TO CASTING SLABS AND WALLS.
  - SEE ARCHITECTURAL, MECHANICAL, PLUMBING, ELECTRICAL, AND OTHER DISCIPLINES DRAWINGS FOR OPENING SIZES AND LOCATIONS NOT SHOWN ON PLAN. SEE TYPICAL OPENINGS AND EMBEDS IN CONCRETE, TYPICAL ROOF DECK OPENINGS, AND TYPICAL COMPOSITE DECK OPENINGS' DETAILS FOR OPENING PLACEMENT CRITERIA AND REINFORCING OR FRAMING REQUIREMENTS. NOTIFY STRUCTURAL ENGINEER OF ANY OPENINGS NOT SHOWN ON THE STRUCTURAL DRAWINGS FOR WHICH THE TYPICAL DETAILS DO NOT APPLY.
  - REFERENCE ALL CONSTRUCTION DOCUMENTS FOR SIZE, EXTENT, AND LOCATION OF CONCRETE CURBS, HOUSEKEEPING PADS, CMU WALLS, PLANTER WALLS, BOLLARDS, EDGE ANGLES, AND SLAB PENETRATIONS. REINFORCE PER TYPICAL DETAILS.
  - WHERE NOTE APPLIES, HSS POST CONTINUES TO UNDERSIDE OF LEVEL P1 SLAB. PROVIDE "TYPICAL HSS POST TOP SLIP CONNECTION" AT UNDERSIDE OF SLAB ABOVE.

8 PARTIAL PLAN - LOBBY SHUTTLE ELEVATOR PIT  
1/8" = 1'-0"



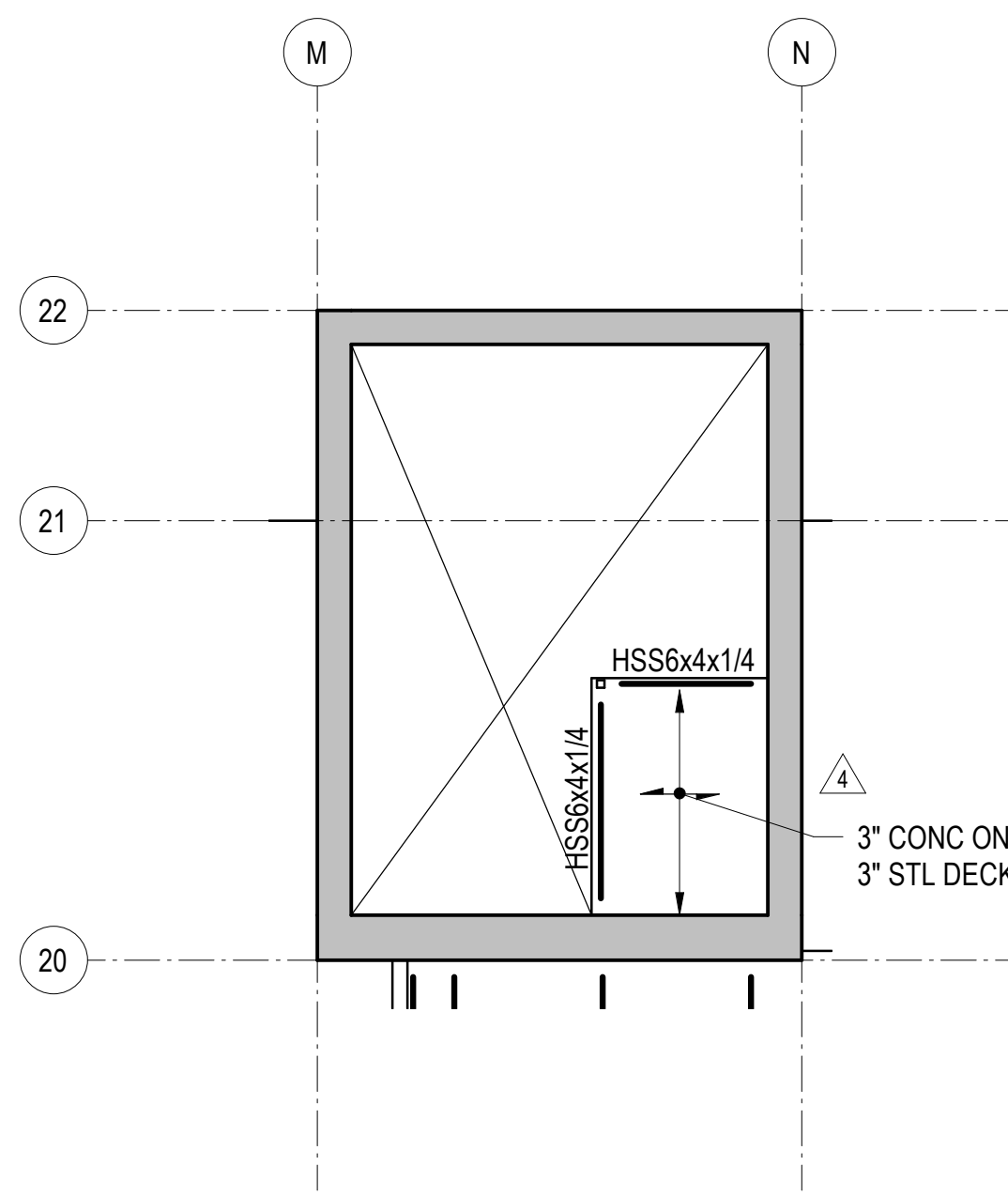
- NOTES:
- SEE RELEVANT PLANS FOR REFERENCE ELEVATION. TOP OF STEEL IS AT BOTTOM OF DECK UNLESS NOTED OTHERWISE.
  - STRUCTURAL SLAB IS 3-INCHES OF CONCRETE ON 3-INCH COMPOSITE STEEL DECK UNLESS NOTED OTHERWISE. REINFORCE WITH WWR 6x6-W2.9xW2.9. SEE TYPICAL SLAB ON STEEL DECK DETAILS FOR REINFORCING AND OTHER INFORMATION. REINFORCING SHOWN ON THE PLAN AND IN THE TYPICAL DETAILS IS IN ADDITION TO THIS REINFORCING.

13 PARTIAL PLAN - TYPE 3B BALCONY  
1/8" = 1'-0"



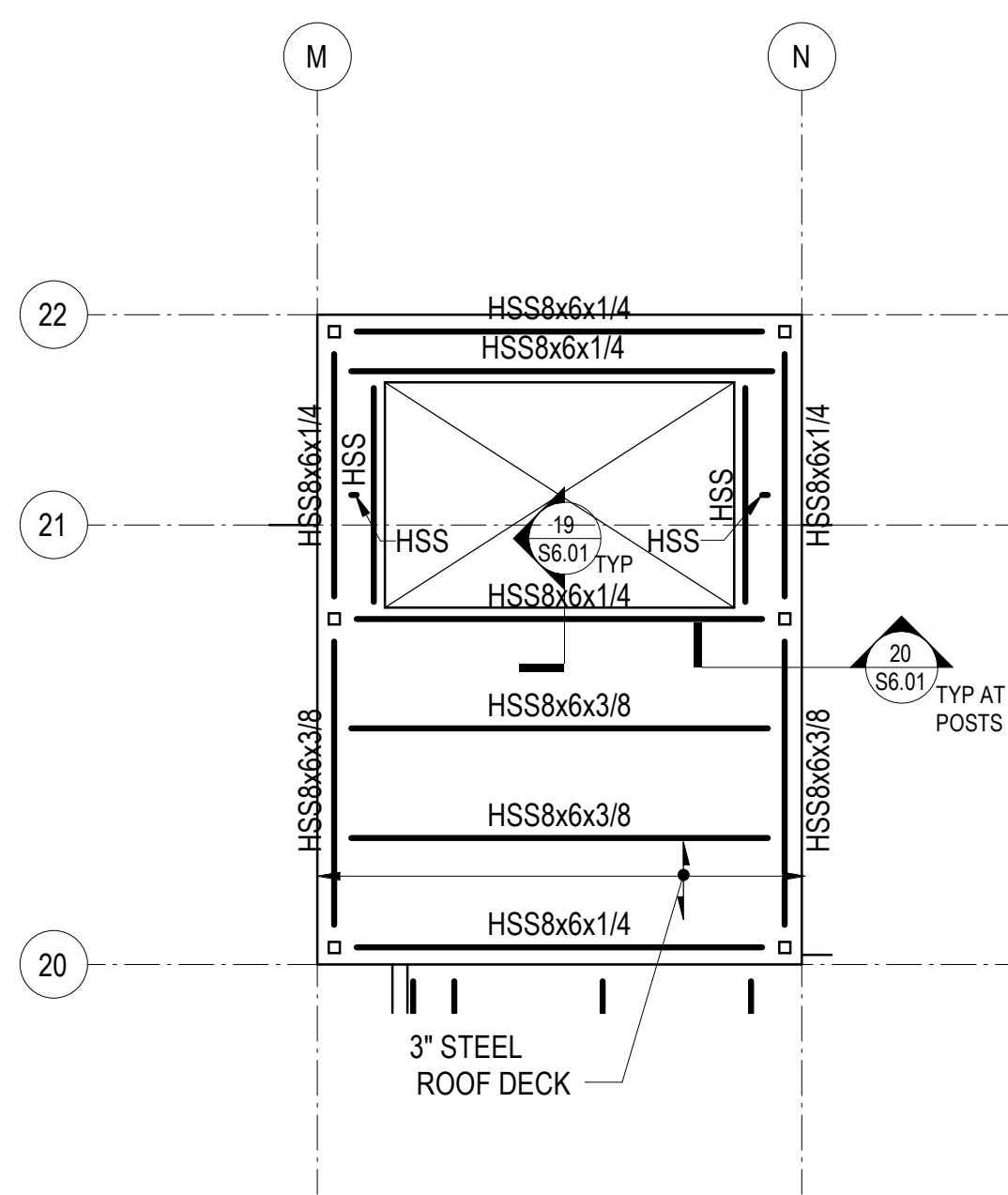
- NOTES:
- REFERENCE FLOOR ELEVATIONS ARE:  
TOWER B LEVEL 5: 8412'-0"  
TOWER B LEVEL 7: 8436'-6"  
TOP OF STEEL IS AT THE REFERENCE FLOOR ELEVATION UNLESS NOTED OTHERWISE.
  - SEE ARCHITECTURAL DETAILS FOR ADDITIONAL INFORMATION.

18 PARTIAL PLAN - TOWER B SUNSHADES  
1/8" = 1'-0"



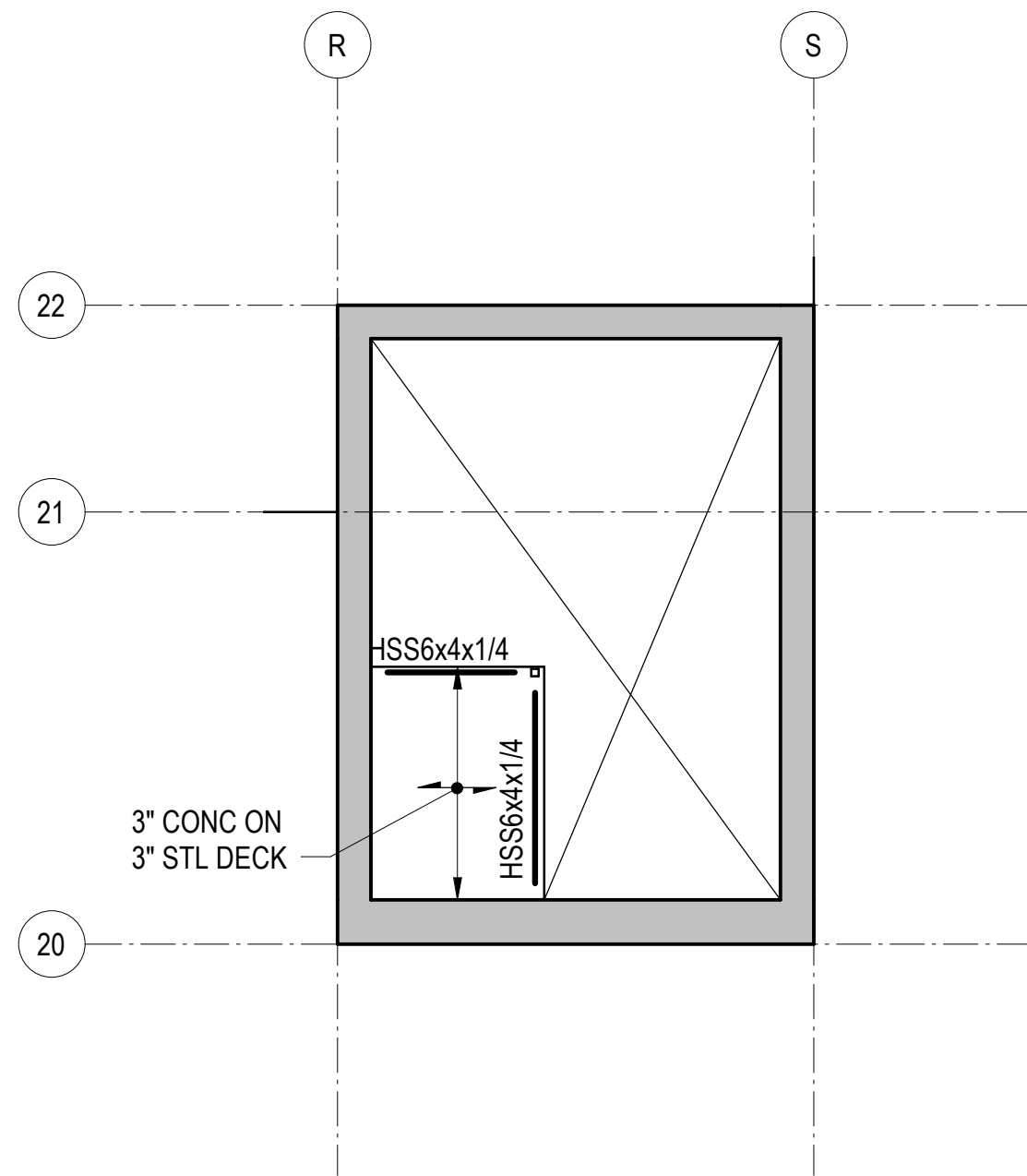
- NOTES:
- REFERENCE FLOOR ELEVATION IS 8452'-8". REFERENCE TOP OF STRUCTURAL STEEL IS 6-INCHES BELOW THE REFERENCE FLOOR ELEVATION, TYPICAL UNLESS NOTED OTHERWISE.
  - STRUCTURAL SLAB IS 3-INCHES OF CONCRETE ON 3-INCH COMPOSITE STEEL DECK UNLESS NOTED OTHERWISE. REINFORCE WITH WWR 6x6-W2.9xW2.9. SEE TYPICAL SLAB ON STEEL DECK DETAILS FOR REINFORCING AND OTHER INFORMATION. REINFORCING SHOWN ON THE PLAN AND IN THE TYPICAL DETAILS IS IN ADDITION TO THIS REINFORCING.

9 PARTIAL PLAN - NORTH CORE ELEV OVERRUN  
1/8" = 1'-0"



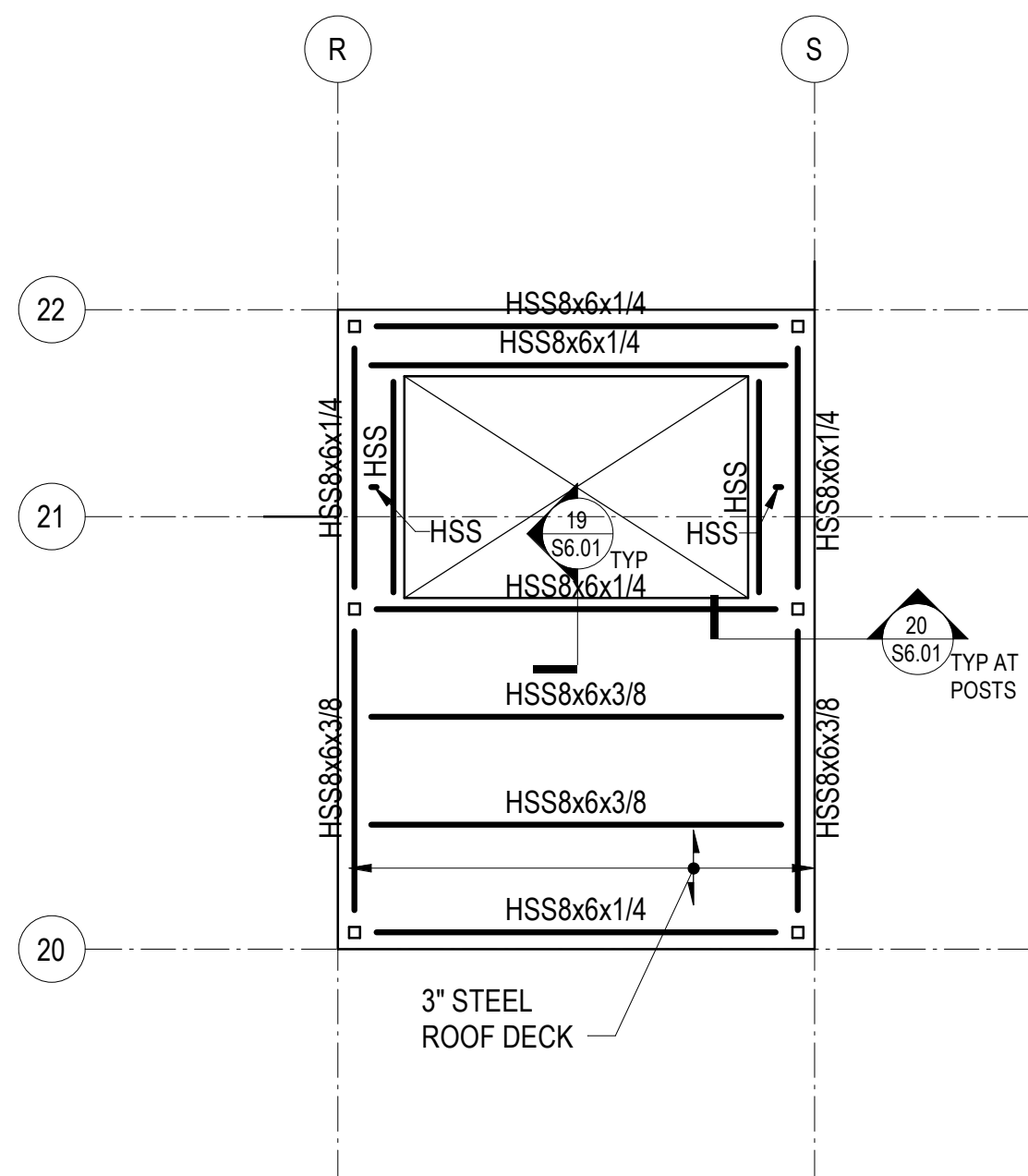
- NOTES:
- REFERENCE FLOOR ELEVATION IS 8458'-11". REFERENCE TOP OF STRUCTURAL STEEL IS AT THE REFERENCE FLOOR ELEVATION, TYPICAL UNLESS NOTED OTHERWISE.
  - ROOF DECK IS MINIMUM 3-INCH x 20 GAUGE STEEL DECKING. TOP OF DECK IS AT TOP OF STEEL UNLESS NOTED OTHERWISE.

19 PARTIAL PLAN - TOP OF NORTH CORE  
1/8" = 1'-0"



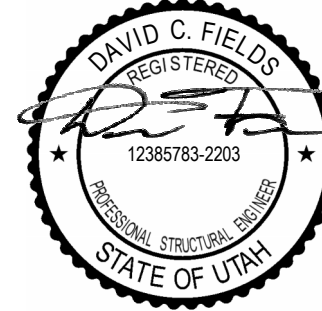
- NOTES:
- REFERENCE FLOOR ELEVATION IS 8452'-8". REFERENCE TOP OF STRUCTURAL STEEL IS 6-INCHES BELOW THE REFERENCE FLOOR ELEVATION, TYPICAL UNLESS NOTED OTHERWISE.
  - STRUCTURAL SLAB IS 3-INCHES OF CONCRETE ON 3-INCH COMPOSITE STEEL DECK UNLESS NOTED OTHERWISE. REINFORCE WITH WWR 6x6-W2.9xW2.9. SEE TYPICAL SLAB ON STEEL DECK DETAILS FOR REINFORCING AND OTHER INFORMATION. REINFORCING SHOWN ON THE PLAN AND IN THE TYPICAL DETAILS IS IN ADDITION TO THIS REINFORCING.

10 PARTIAL PLAN - SOUTH CORE ELEV OVERRUN  
1/8" = 1'-0"



- NOTES:
- REFERENCE FLOOR ELEVATION IS 8458'-11". REFERENCE TOP OF STRUCTURAL STEEL IS AT THE REFERENCE FLOOR ELEVATION, TYPICAL UNLESS NOTED OTHERWISE.
  - ROOF DECK IS MINIMUM 3-INCH x 20 GAUGE STEEL DECKING. TOP OF DECK IS AT TOP OF STEEL UNLESS NOTED OTHERWISE.

20 PARTIAL PLAN - TOP OF SOUTH CORE  
1/8" = 1'-0"



150 South Jackson St., Suite 600  
Seattle, Washington 98104 USA  
+1 206 624 8970 olsonkundig.com

Olson Kundig

#---%" &\* (+) / (&  
00%: " 1'(\*%23 4'15

MAGNUSSON  
KLEMENCIC  
ASSOCIATES

Structural + Civil Engineers

Seattle Chicago  
www.mka.com  
206.292.1200

20052  
05/17/2024

8	04/04/2025	ASI-009
5	01/07/2025	ASI-007
4	01/07/2025	ASI-006
2	7/26/2024	ASI-002
04/08/2024 IFC SET 1 OF 3		
11/18/2022	95% CD	

16. %" #6 7

"#\$% ' & (\*) (+  
" (+

, & "