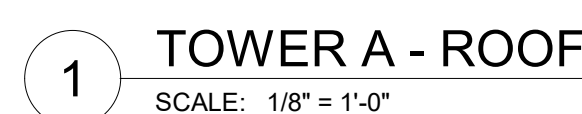


1. DIMENSIONS ARE TO FACE OF STUD OF EXTERIOR WALLS, CORRIDOR WALLS & INTERIOR WALLS. UNO.
2. DIMENSIONS ARE TO CENTERLINE OF DEMISING WALLS. UNO.
3. ALL EXPOSED STRUCTURAL STEEL TO RECEIVE 1 HR INTUMESCENT PAINTING. UNO.
4. AT FRAMED EXTERIOR WALLS, FRAMING TO BE SET BACK 5/8" FROM FACE OF CONCRETE TO ALLOW FOR FLASH ALIGNMENT OF SHEATHING. EDGE OF SLAB. UNO.
5. CUSHION DIMENSIONS ARE TO FACE OF FINISH UNO.
6. SEE SHEETS A0 10 AND A0 11 FOR ASSEMBLIES.
7. ALL CORRIDOR WALLS ARE TYPE E6. UNO.
8. ALL DEMISING WALLS ARE TYPE A6. UNO.
9. ALL INTERIOR PARTITIONS ARE TYPE A6. UNO.
10. ALL FURRING AROUND CONCRETE STRUCTURAL COLUMNS TYPE G1. UNO.
11. ALL VENT SHAFT WALLS ARE TYPE K4. UNO.
12. REFER TO LIFE SAFETY PLANS A0 30 - A0 34 FOR FULL EXTENT OF FIRE RATED WALLS.
13. UNIT FLOOR LAYOUTS ON SHEETS A2 4A - A2 4R.
14. ALL OWNER PARKING STALLS SHALL INCLUDE EV INFRASTRUCTURE.
15. REFER TO SHEET A0 08 FOR ANSI TYPE A ACCESSIBILITY REQUIREMENTS.
16. REFER TO SHEET A0 07 FOR ANSI TYPE A ACCESSIBILITY REQUIREMENTS.
17. REFER TO SHEET A0 06 FOR ADA PUBLIC SPACE ACCESSIBILITY REQUIREMENTS.
18. ALL LOCAL EQUIPMENT LOCATED WITHIN ELEVATOR MECHANICAL EQUIPMENT ENCLOSURE.
19. CONTRACTOR TO COORDINATE WITH EREFA/PLANNING MANUFACTURER GUIDELINES FOR VENTING



<b><u>ALLOWABLE BUILDING HEIGHT</u></b>	
DATUM:	<b><u>8321'-0"</u></b>
MAX HEIGHT ALLOWED:	<b><u>106'-0"</u></b>
MAX ROOF ELEVATION:	<b><u>8427'-0"</u></b>
MAX MECH ELEVATION:	<b><u>8430'-0"</u></b>

