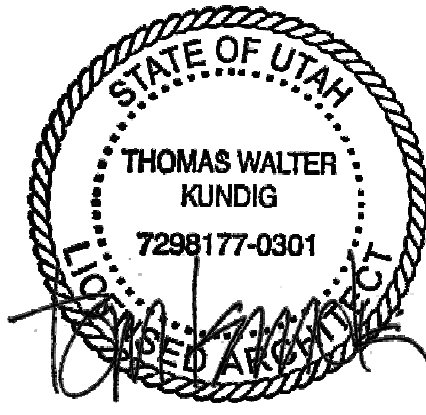


PLAN GENERAL NOTES

1. DIMENSIONS ARE TO FACE OF STUD OF EXTERIOR WALLS, CORRIDOR WALLS & INTERIOR WALLS, UNO.
2. DIMENSIONS ARE TO CENTERLINE OF DEMISING WALLS, UNO.
3. ALL EXPOSED STRUCTURAL STEEL TO RECEIVE 1 HR INTUMESCENT PAINTING, UNO.
4. AT FRAMED EXTERIOR WALLS, FRAMING TO BE SET BACK 5/8" FROM FACE OF CONCRETE TO ALLOW FOR FLUSH ALIGNMENT OF SHEATHING TO EDGE OF SLAB, UNO.
5. CASEWORK DIMENSIONS ARE TO FACE OF FINISH, UNO.
6. SEE SHEETS A0.10 AND A0.11 FOR ASSEMBLIES.
7. ALL CORRIDOR WALLS ARE TYPE E6, UNO.
8. ALL DEMISING WALLS ARE TYPE J6, UNO.
9. ALL INTERIOR PARTITIONS ARE TYPE A6, UNO.
10. ALL FURRING AROUND CONCRETE STRUCTURAL COLUMNS TYPE G1, UNO.
11. ALL VENT SHAFT WALLS ARE TYPE K4, UNO.
12. REFER TO LIFE SAFETY PLANS A0.30 - A0.34 FOR FULL EXTENT OF FIRE RATED WALLS.
13. UNIT PLAN LAYOUTS ON SHEETS A2.4A - A2.4R.
14. ALL OWNER PARKING STALLS SHALL INCLUDE EV INFRASTRUCTURE.
15. REFER TO SHEET A0.08 FOR ANSI TYPE B ACCESSIBILITY REQUIREMENTS.
16. REFER TO SHEET A0.07 FOR ANSI TYPE A ACCESSIBILITY REQUIREMENTS.
17. REFER TO SHEET A0.06 FOR ADA PUBLIC SPACE ACCESSIBILITY REQUIREMENTS.
18. ALL MECHANICAL EQUIPMENT LOCATED WITHIN ELEVATOR/MECHANICAL EQUIPMENT ENCLOSURE.
19. CONTRACTOR TO COORDINATE WITH FIREPLACE MANUFACTURER GUIDELINES FOR VENTING.



109 South Jackson St., Suite 600  
Seattle, Washington 98104 USA  
+1 206 454 9810  
info@olsonkundig.com

**Olson Kundig**

**SOMMET BLANC**  
9300 MARSHALL AVE  
PARK CITY, UT 84060



**Aspen Group USA, LLC**  
PO Box 980022  
Park City, Utah 84098

**Pool Consultant**  
Cloward & Co.  
2696 N University Ave., Suite 250  
Provo, UT 84604

**Landscape Architect**  
EPG Design  
6040 South High Tech Drive, Suite 100  
Midvale, Utah 84047

**Specifications Writer**  
Friday Group  
88 Mainelli Road  
Middlebury, VT

**Code Consultant**  
Holmes  
600 1st Avenue, Suite 200A  
Seattle, WA 98104

**Fire Protection Engineer**  
Jensen Hughes  
One Research Drive, Suite 305C  
Westborough, MA 01581

**Vertical Transportation Consultant**  
Larch Bates  
1915 North Creek Parkway, Suite 304  
Bothell, WA 98011

**Structural Engineer**  
Magnusson Klemencic Associates  
1301 5th Ave., Suite 3200  
Seattle, WA 98101

**Lighting Designer**  
O  
319 SE MLK Blvd., Suite 210  
Portland, Oregon 97219

**Building Envelope Consultant**  
RDH  
2101 N 34th St  
Seattle, WA 98103

**Accessibility Consultant**  
Studio Pacifica  
2144 Westlake Ave N, Suite F  
Seattle, WA 98109

**MEP Engineer**  
WSP USA  
1001 Fourth Ave., Suite 3100  
Seattle, WA 98154

principal architect: TK, KM  
project manager: TM, JB, SL, MD  
drawn by: SK, SS, JR, CP, EA  
JF, BD

checked by: JB  
job no.: 2052  
date: 05/31/2024

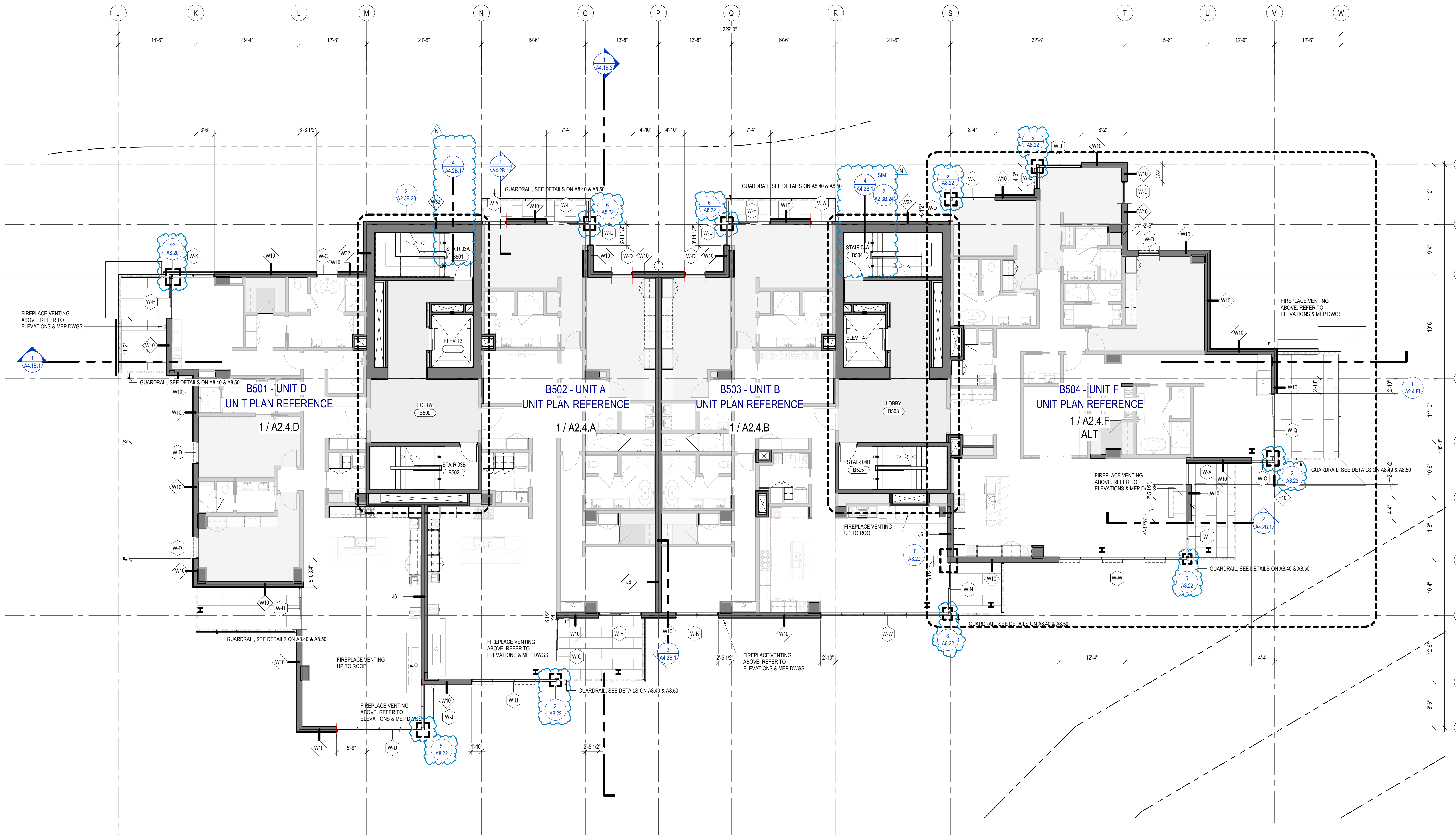
revisions:

N 04/07/25 ASI 009  
no. date by

IFC SET 3 OF 3  
05/31/2024

PLAN - TOWER B - LVL 5

**A2.2B.15**



**1 TOWER B - LEVEL 5**  
SCALE: 1/8" = 1'-0"

