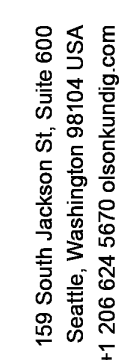
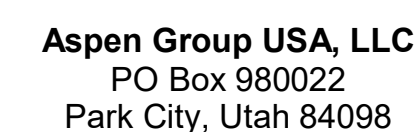


1. DIMENSIONS ARE TO FACE OF STUD OF EXTERIOR WALLS, CORRIDOR WALLS & INTERIOR WALLS. UNO
2. ALL EXTERIOR WALLS ARE TO CENTERLINE OF EXTERIOR WALLS. UNO
3. ALL EXPOSED STRUCTURAL STEEL TO RECEIVE 1/4" HINT-IMPRESSING PAINTING. UNO
4. ALL EXTERIOR WALLS ARE TO BE CONCRETE WITH 1/4" HINT-IMPRESSING PAINTING OF CONCRETE TO ALLOW FOR FLUSH ALIGNMENT OF SHEATHING TO EDGE OF SLAB. UNO
5. CASEWORK DIMENSIONS ARE TO FACE OF FINISH. UNO
6. SEE SHEETS 01-10-100 FOR FINISHES. UNO
7. ALL CORRIDOR WALLS ARE TYPE B&J. UNO
8. ALL EXTERIOR WALLS ARE TYPE B&J. UNO
9. ALL INTERIOR PARTITIONS ARE TYPE A&J. UNO
10. ALL FURRING ABOVE CONCRETE STRUCTURAL COLUMNS TYPE Q1. UNO
11. ALL FLOOR SHEET WALLS ARE TYPE A&J. UNO
12. REFER TO LIFE SAFETY PLANS 40-01-34 FOR FULL EXTENT OF FIRE RATED WALLS. UNO
13. ALL INTERIOR WALLS ARE TO BE CONCRETE WITH 1/4" HINT-IMPRESSING PAINTING. UNO
14. ALL OWNER PARKING SLABS SHALL INCLUDE IN-PLACE INFRASTRUCTURE. UNO
15. REFER TO SHEET A&J FOR ANY TYPE A ACCESSIBILITY REQUIREMENTS. UNO
16. REFER TO SHEET A&J FOR ANY TYPE B ACCESSIBILITY REQUIREMENTS. UNO
17. REFER TO SHEET A&J FOR ANY TYPE C ACCESSIBILITY REQUIREMENTS. UNO
18. ALL MECHANICAL EQUIPMENT LOCATED WITHIN MECHANICAL MECHANICAL EQUIPMENT ENCLOSURE. UNO
19. CONTRACTOR TO COORDINATE WITH FIREPLACE MANUFACTURER GUIDELINES FOR



SOMMET BLANC
9300 MARSAC AVE
PARK CITY, UT 84060



Pool Consultant
Cloward H2O
2696 N University Ave, Suite 290
Provo, UT 84604

Landscape Architect
EPG Design
6949 South High Tech Drive, Suite 100
Midvale, Utah 84047

Specifications Writer
Friday Group
88 Mainelli Road
Middlebury, VT

Code Consultant
Holmes
600 1st Avenue, Suite 200A
Seattle, WA 98104

Fire Protection Engineer
Jensen Hughes
One Research Drive, Suite 305C
Westborough, MA 01581

Vertical Transportation Consultant
Lerch Bates
19515 North Creek Parkway, Suite 300
Bothell, WA 98011

Structural Engineer
Magnusson Klemencic Associates
1301 5th Ave, Suite 3200
Seattle, WA 98101

Lighting Designer
O-
1319 SE MLK Blvd, Suite 210
Portland, Oregon 97219

Building Envelope Consultant
RDH
2101 N 34th St
Seattle, WA 98103

Accessibility Consultant
Studio Pacifica
2144 Westlake Ave N, Suite F
Seattle, WA 98109

MEP Engineer
WSP USA
1001 Fourth Ave., Suite 3100
Seattle, WA 98154

principal architect TK, KM
project manager TM, JB, SL, MD
drawn by SK, SS, JR, CP, EA
JF, BD

checked by JB
job no. 20062
date 11/25/24

ions:

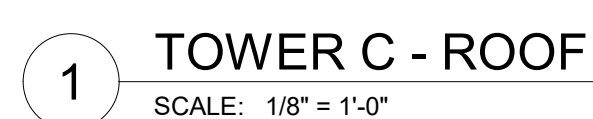
N: 04/07/25	ASI 009
07/03/24	PLANNING REVIEW RESPONSE #2
04/26/24	PLANNING REVIEW RESPONSE #1

no.	date	by
-----	------	----

IFC SET 3 OF 3
11/25/24

PLAN - TOWER C - ROOF

A2.2C.R



ALLOWABLE BUILDING HEIGHT

DATUM:	<u>8376'-6"</u>
MAX HEIGHT ALLOWED:	<u>106'-0"</u>
MAX ROOF ELEVATION:	<u>8482'-6"</u>
MAX MECH ELEVATION:	<u>8485'-6"</u>

