

Olson Kundig

SOMMET BLANC
89300 MARSAC AVE
PARK CITY, UT 84060



Aspen Group USA, LLC
PO Box 980022
Park City, Utah 84098

Pool Consultant
Cloward H20
2696 N University Ave, Suite 290
Provo, UT 84604

Landscape Architect
EPG Design
6949 South High Tech Drive, Suite 100
Midvale, Utah 84047

Specifications Write
Friday Group
88 Mainelli Road
Middlebury, VT

Code Consultant
Holmes
600 1st Avenue, Suite 200A
Seattle, WA 98104

Fire Protection Engineer
Jensen Hughes
One Research Drive, Suite 305
Westborough, MA 01581

Vertical Transportation Consultant
Lerch Bates
19515 North Creek Parkway, Suite 200
Bothell, WA 98011

Structural Engineer
Magnusson Klemencic Associates
1301 5th Ave, Suite 3200
Seattle, WA 98101

Lighting Designer
O-
1319 SE MLK Blvd, Suite 210

Building Envelope Consultant
RDH
2101 N 34th St
Coeville, WA 99403

Accessibility Consultant
Studio Pacifica
2144 Westlake Ave N, Suite F
Seattle, WA 98102

MEP Engineer
WSP USA
1001 Fourth Ave., Suite 3100
Seattle, WA 98154

principal architect	TK, KM
project manager	TM, JB, SL, MD
drawn by	SK, SS, JR, CP, EA
	IF, RH

checked by Checker
job no. 20062
date 06/01/2006

revisions

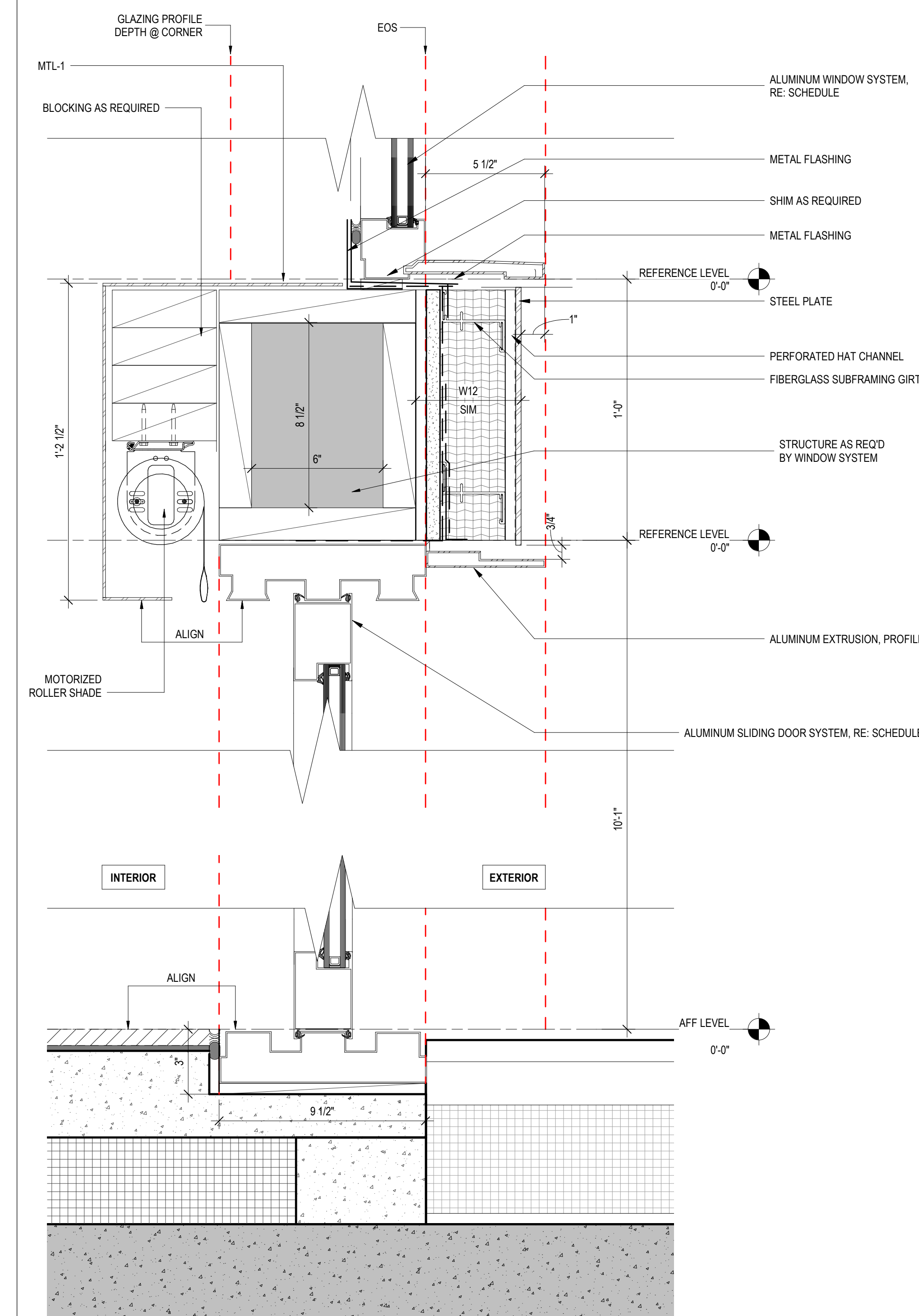
[illegible]

N 04/07/25	ASI 009	
no	date	by

IFC SET 3 OF 3

EXTERIOR DETAILS - WINDOW DETAILS

A8.21a



1

SECTION DETAIL - TRIPLE SLIDER SILL / HEADER @ PH
CLERESTORY

SCALE: 3" = 1'-0"