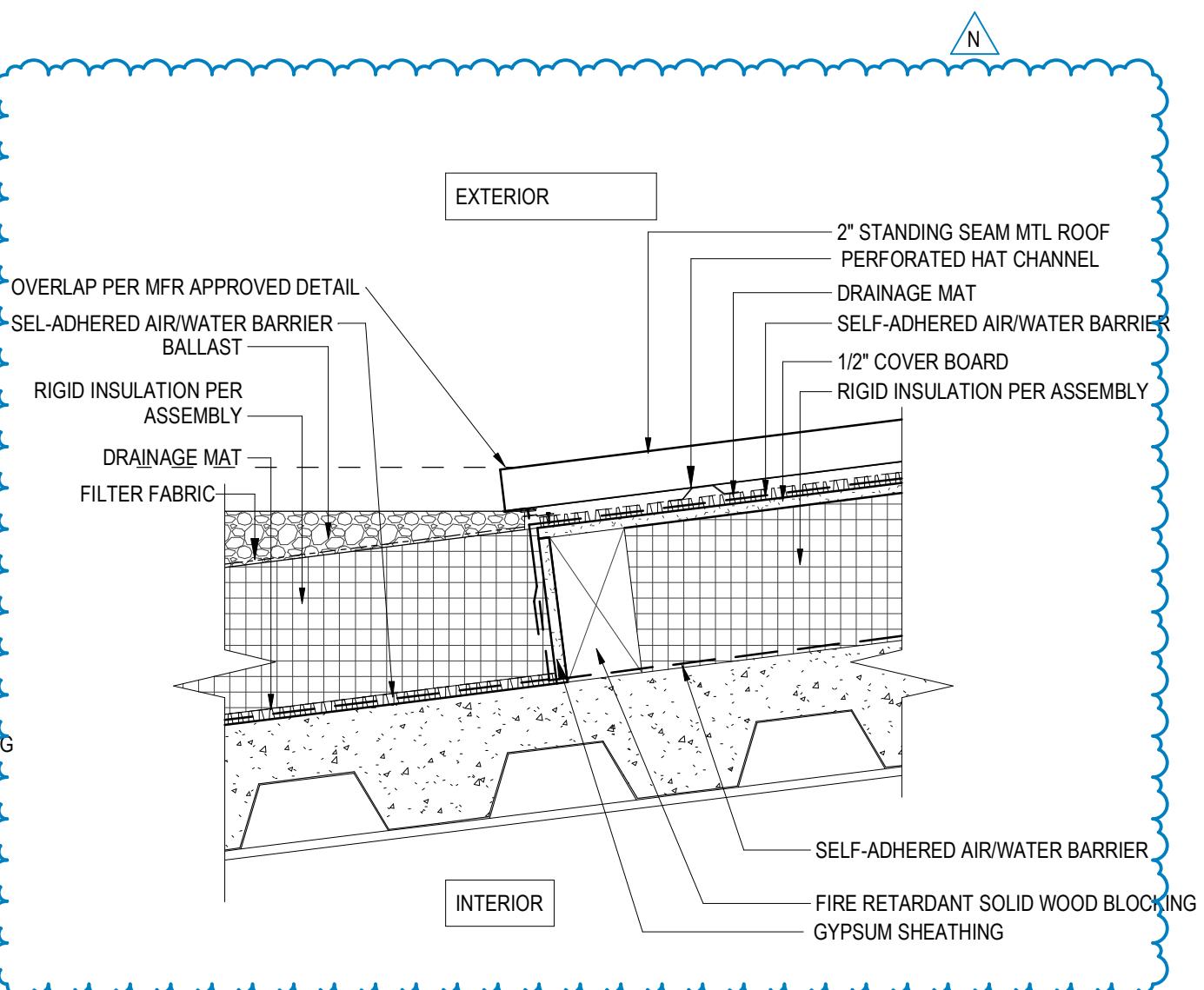
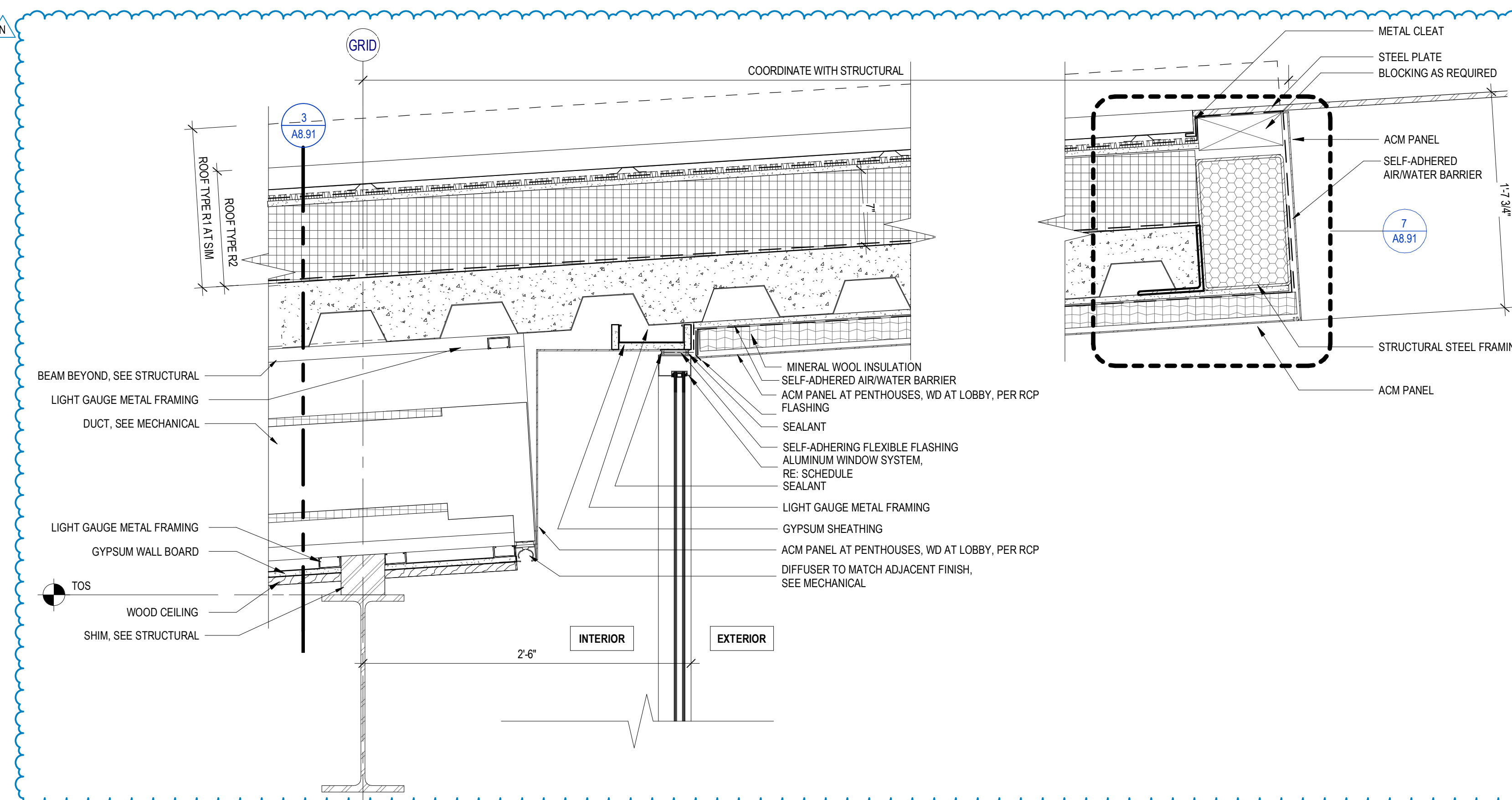


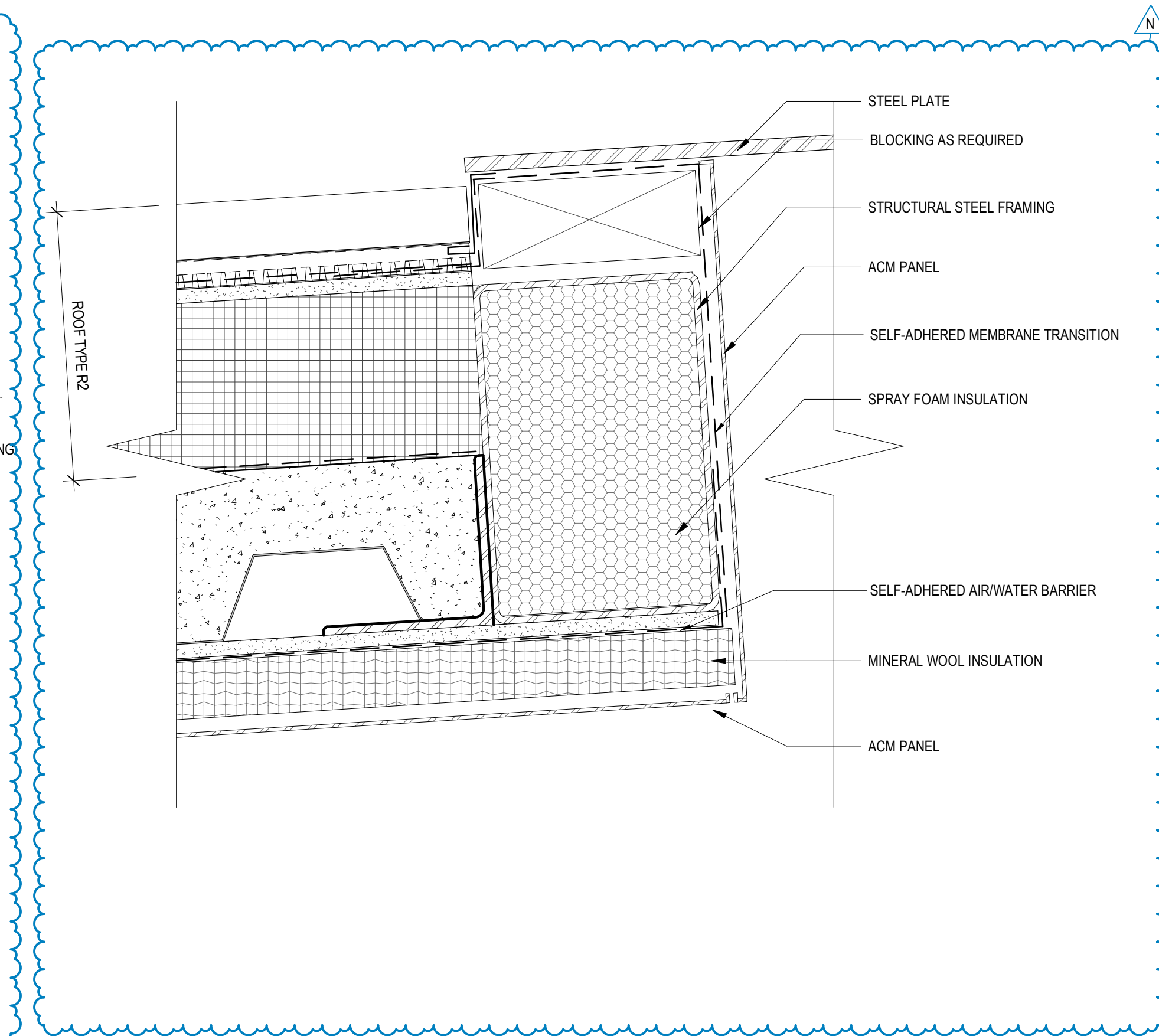
9 ROOF DETAIL - PENTHOUSE VALLEY DRAIN
SCALE: 1 1/2" = 1'-0"



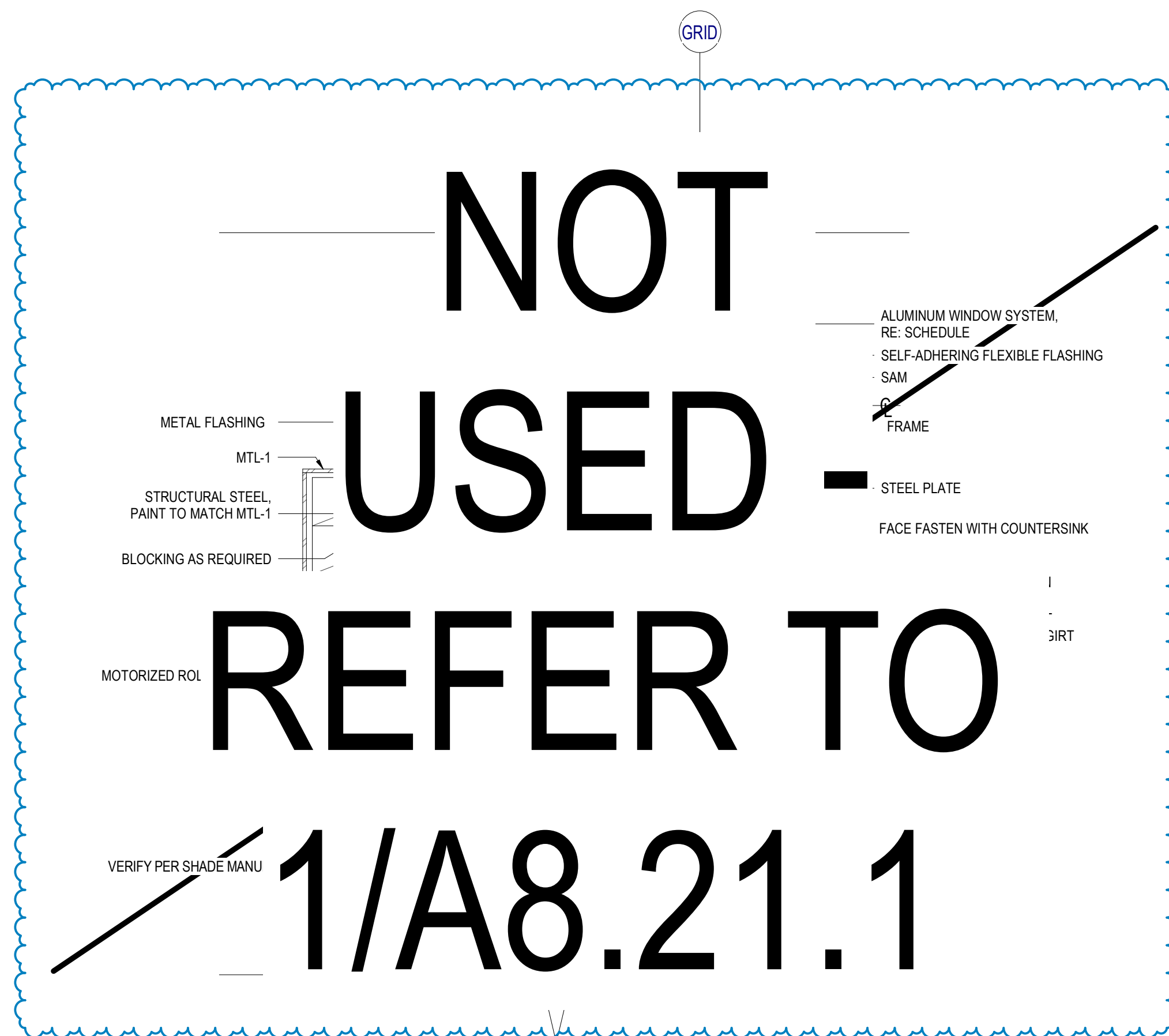
10 DETAIL SECTION @ PENTHOUSE BALLAST TRANSITION
SCALE: 1 1/2" = 1'-0"



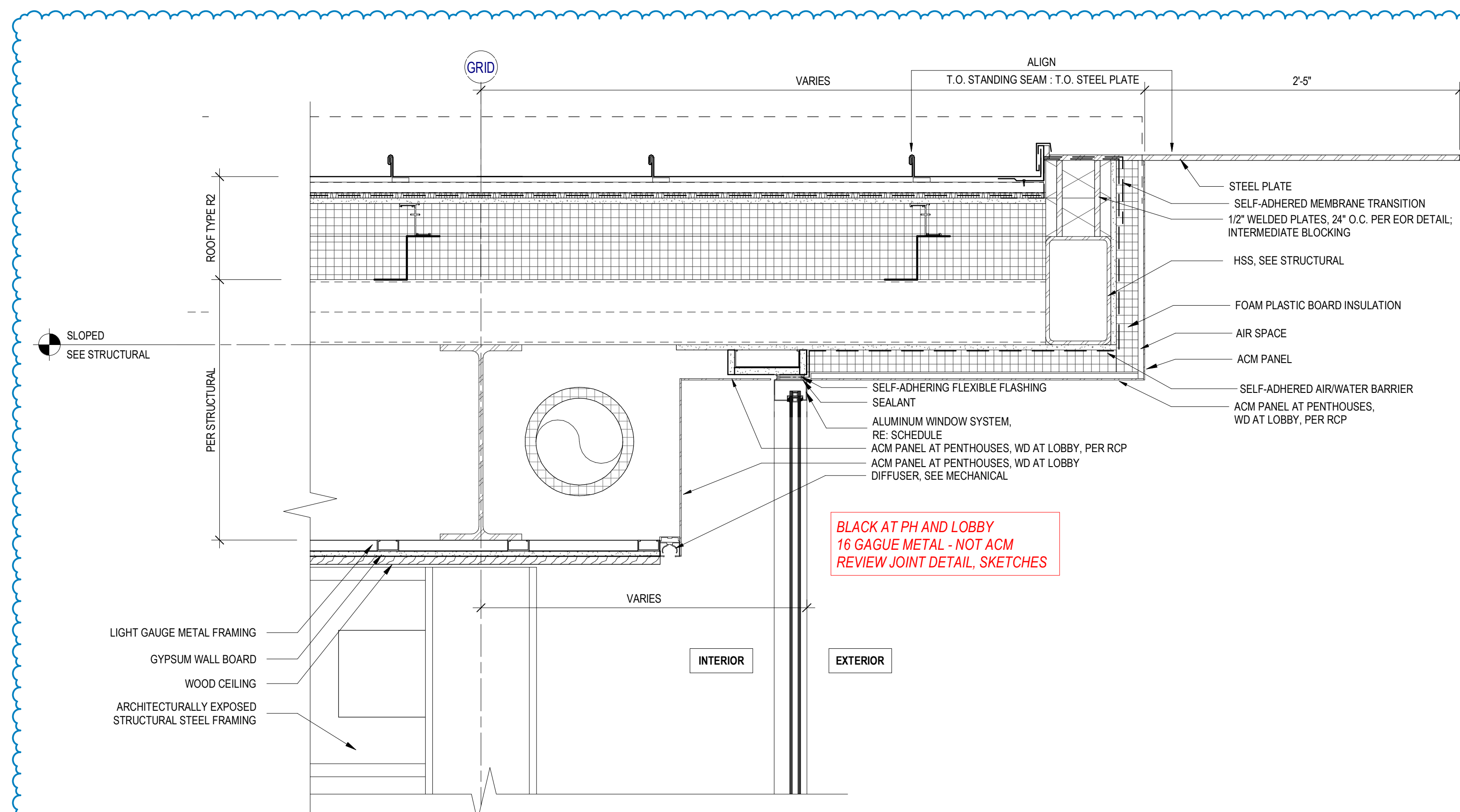
8 DETAIL SECTION @ TYPICAL HIGH EAVE
SCALE: 1 1/2" = 1'-0"



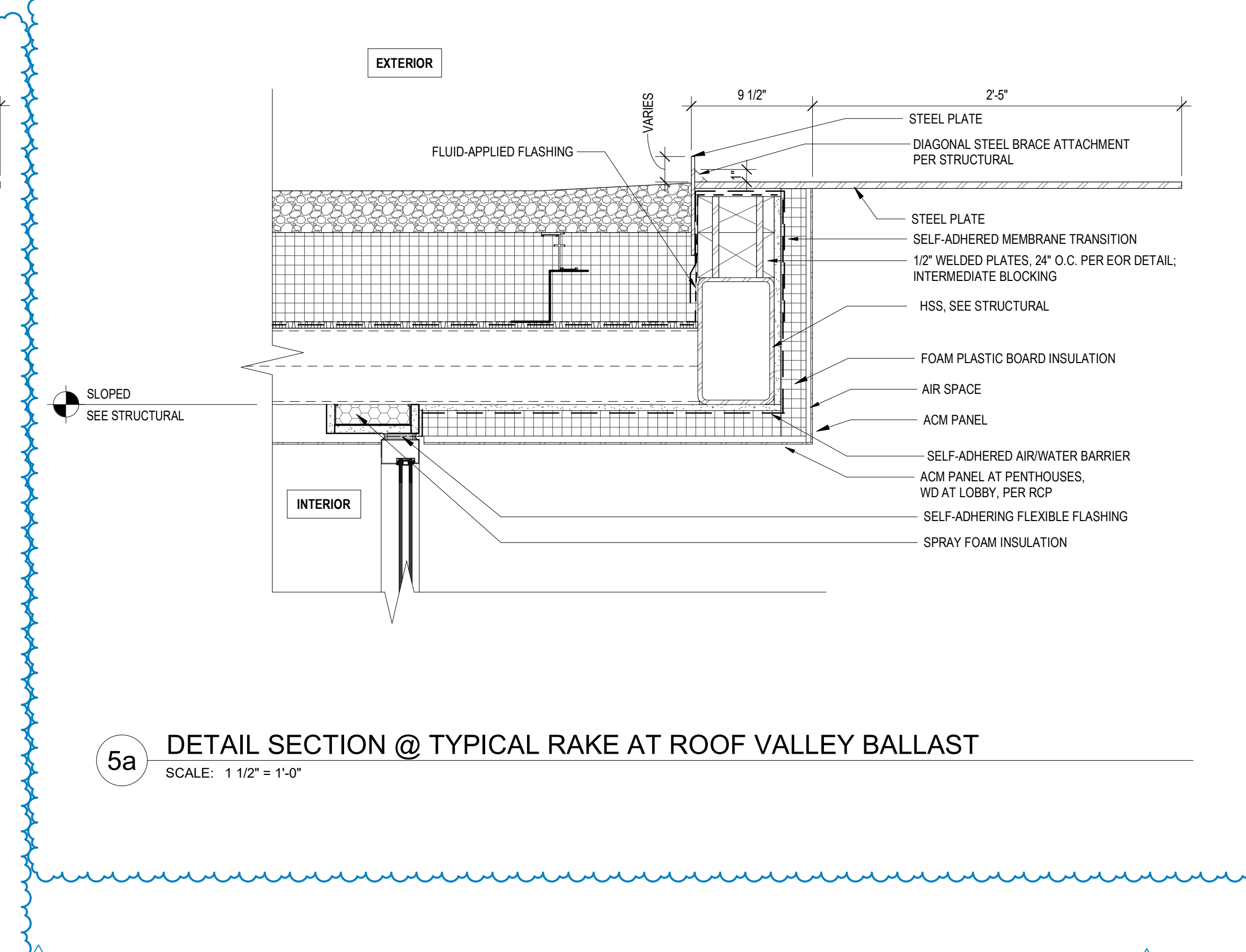
7 DETAIL SECTION @ SLOPED ROOF TYP EAVE
SCALE: 3" = 1'-0"



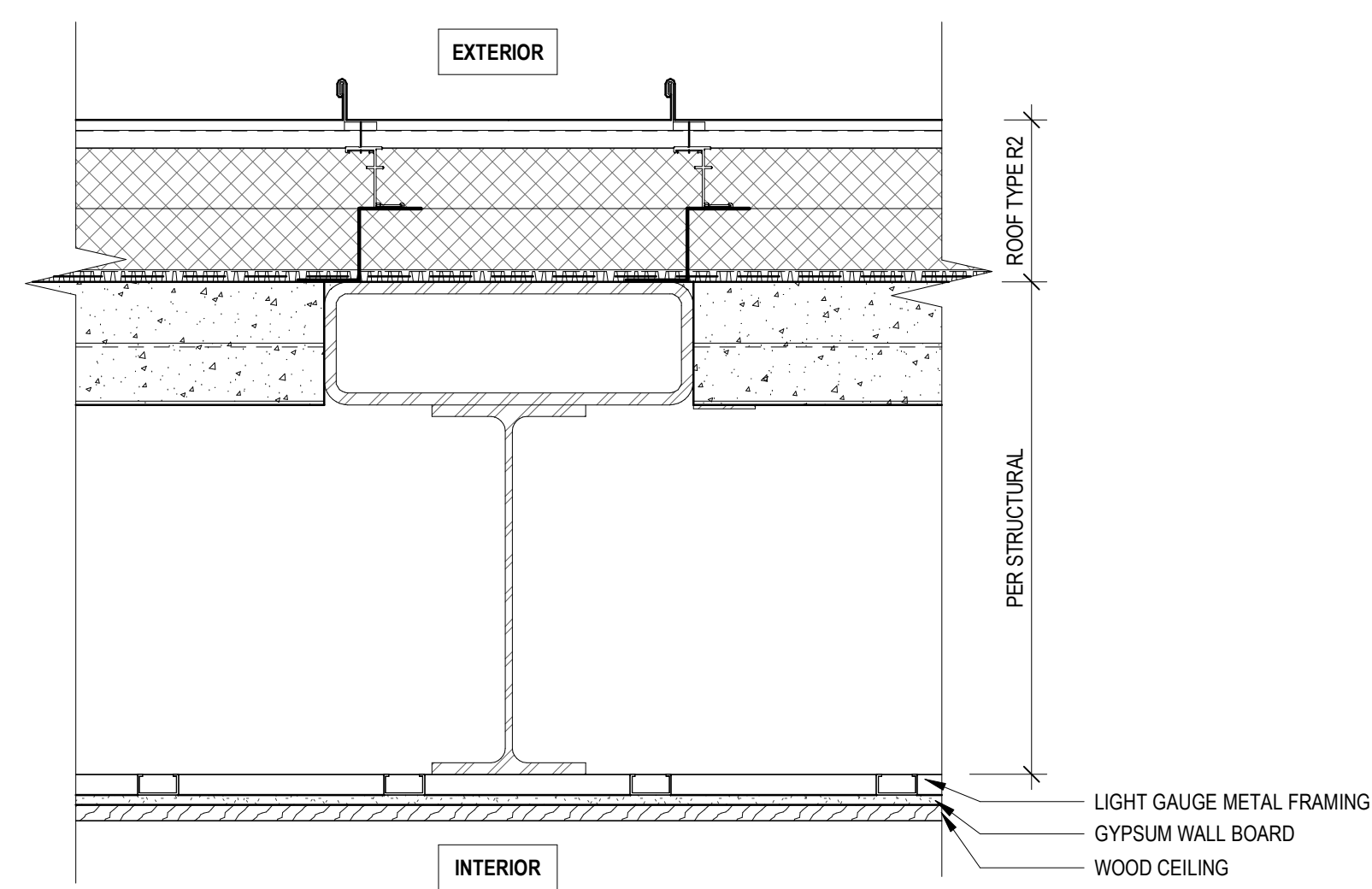
6 DETAIL SECTION @ WINDOW STRUCTURE
SCALE: 3" = 1'-0"



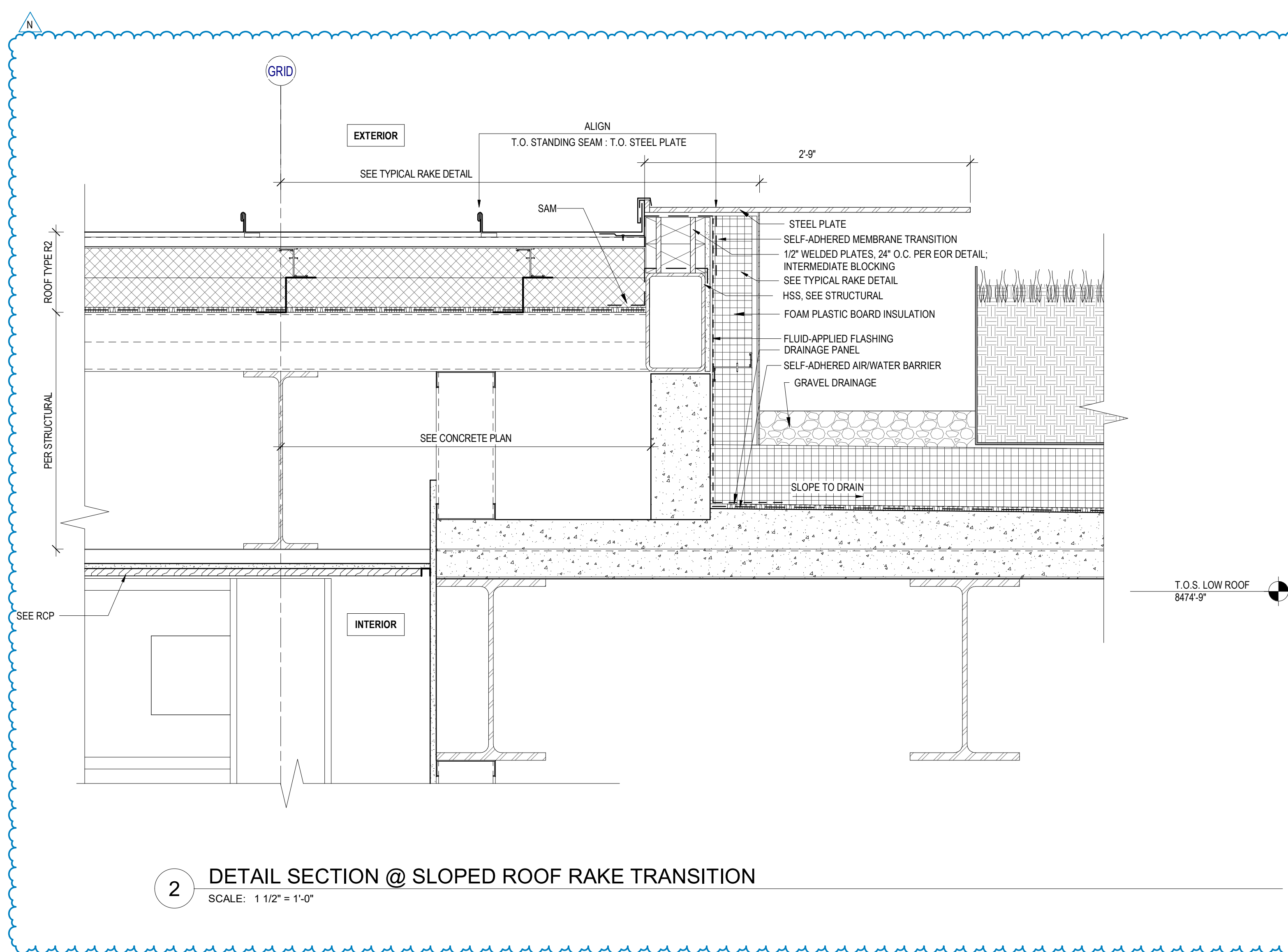
5 DETAIL SECTION @ TYPICAL RAKE
SCALE: 1 1/2" = 1'-0"



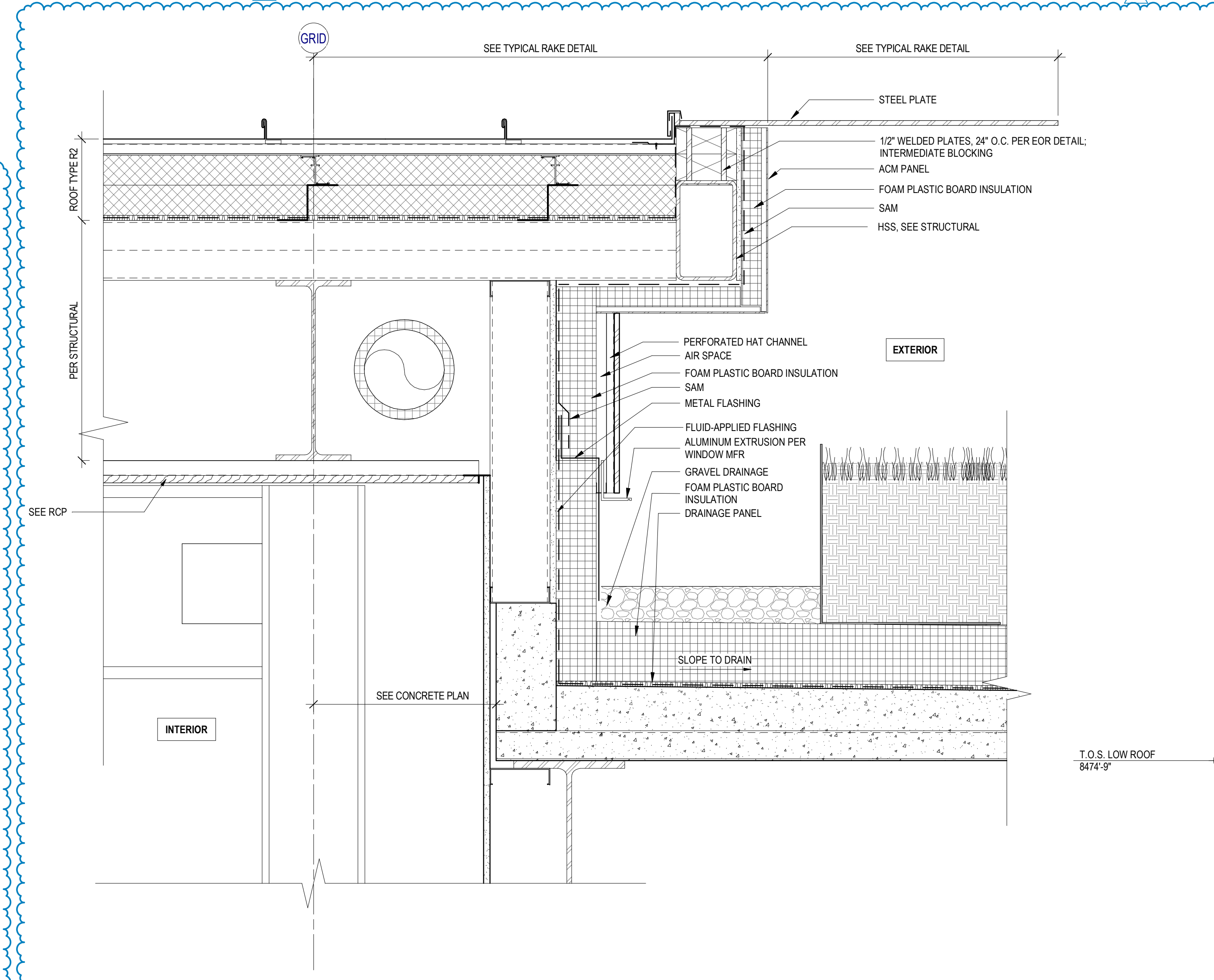
5a DETAIL SECTION @ TYPICAL RAKE AT ROOF VALLEY BALLAST
SCALE: 1 1/2" = 1'-0"



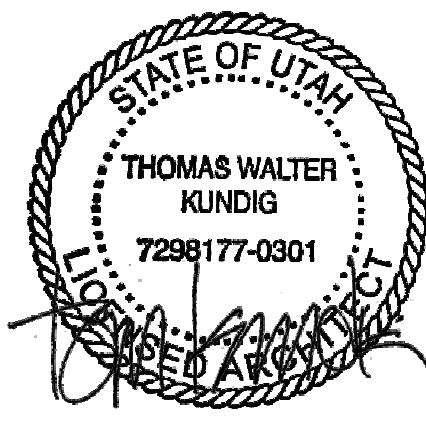
3 DETAIL SECTION @ SLOPED ROOF STRUCTURE
SCALE: 1 1/2" = 1'-0"



2 DETAIL SECTION @ SLOPED ROOF RAKE TRANSITION
SCALE: 1 1/2" = 1'-0"



1 DETAIL SECTION @ SLOPED ROOF TYP RAKE
SCALE: 1 1/2" = 1'-0"



Olson Kundig

SOMMET BLANC
9300 MARSA C AVE
PARK CITY, UT 84060



Aspen Group USA, LLC
PO Box 980022
Park City, Utah 84098

Pool Consultant
Howard H2O
2696 N University Ave, Suite 290
Provo, UT 84604

Landscape Architect
EPG Design
6840 South High Tech Drive, Suite 100
Midvale, Utah 84047

Specifications Writer
Friday Group
88 Mainelli Road
Middletown, VT

Code Consultant
Holmes
600 1st Avenue, Suite 200A
Seattle, WA 98104

Fire Protection Engineer
Jensen Hughes
One Research Drive, Suite 305C
Westborough, MA 01581

Vertical Transportation Consultant
Larch Bates
1915 North Creek Parkway, Suite 304
Bothell, WA 98011

Structural Engineer
Magnusson Klemencic Associates
1301 5th Ave, Suite 3200
Seattle, WA 98101

Lighting Designer
O
1319 SE MLK Blvd, Suite 210
Portland, Oregon 97219

Building Envelope Consultant
RDH
2101 N 34th St
Seattle, WA 98103

Accessibility Consultant
Studio Pacifica
2144 Westlake Ave N, Suite F
Seattle, WA 98109

MEP Engineer
WSP USA
1001 Fourth Ave, Suite 3100
Seattle, WA 98154

principal architect: TK, KM
project manager: TM, JB, SL, MD
drawn by: SK, SS, JR, CP, EA
checked by: JB
job no. 2052
date 05/31/2024

revisions:
no. date by

N 040725 ASI 009
no. date by

IFC SET 3 OF 3
05/31/2024

EXTERIOR DETAILS -
ROOF DETAILS

A8.91