

109 South Jackson St, Suite 800  
Salt Lake City, Utah 84101  
+1 303 464 1000  
www.olsonkundig.com

**Olson Kundig**

SOMMET BLANC  
8900 MARSAC AVE  
PARK CITY, UT 84060



**Aspen Group USA, LLC**  
PO Box 980022  
Park City, Utah 84098

Pool Consultant  
Cloward H2O  
2696 N University Ave, Suite 290  
Provo, UT 84604

Landscape Architect  
EPG Design  
6049 South High Tech Drive, Suite 100  
Midvale, Utah 84047

Specifications Writer  
Friday Group  
88 Mainell Road  
Middlebury, VT

Code Consultant  
Holmes  
600 1st Avenue, Suite 200A  
Seattle, WA 98104

Fire Protection Engineer  
Jensen Hughes  
One Research Drive, Suite 305C  
Westborough, MA 01581

Vertical Transportation Consultant  
Lerch Bates  
1915 North Creek Parkway, Suite 304  
Bothell, WA 98011

Structural Engineer  
Magnusson Klemencic Associates  
1301 6th Ave, Suite 3200  
Seattle, WA 98101

Lighting Designer  
O  
319 SE MLK Blvd, Suite 210  
Portland, Oregon 97219

Building Envelope Consultant  
RDH  
2101 N 34th St  
Seattle, WA 98103

Accessibility Consultant  
Studio Pacifica  
2144 Westlake Ave N, Suite F  
Seattle, WA 98109

MEP Engineer  
WSP USA  
1001 Fourth Ave, Suite 3100  
Seattle, WA 98104

principal architect TK, KM  
project manager TM, JB, SL, MD  
drawn by SK, SS, JR, CP, EA  
JF, BD

checked by JB  
job no. 2052  
date 11/25/24

revisions:  
\_\_\_\_\_  
\_\_\_\_\_  
\_\_\_\_\_

no. date by

O 040725 ASI 010

no. date by

IFC SET 3 OF 3  
11/25/24

ELEVATION - TOWER C -  
EAST & WEST

**A3.C2**

### KEYNOTES

SECTION	DESCRIPTION
03 30 00-1 NOTE	NON-EXPOSED CONCRETE BELOW GRADE OR BEHIND FINISHED WALLS/FLOORS
05 75 00-2	GUARDRAIL, SEE DETAILS ON A8.40 & A8.50
07 42 47-01	GFRC WALL PANEL
08 44 13	ALUMINUM CURTAIN WALL SYSTEM, RE: SCHEDULE
08 90 00	LOUVERS
10 32 00-2	FIREPLACE EXHAUST FLUE
[03 30 00] BOARD FORMED CONCRETE	CONC-102
[05 50 00] MISC STEEL TRIM	STEEL PLATE

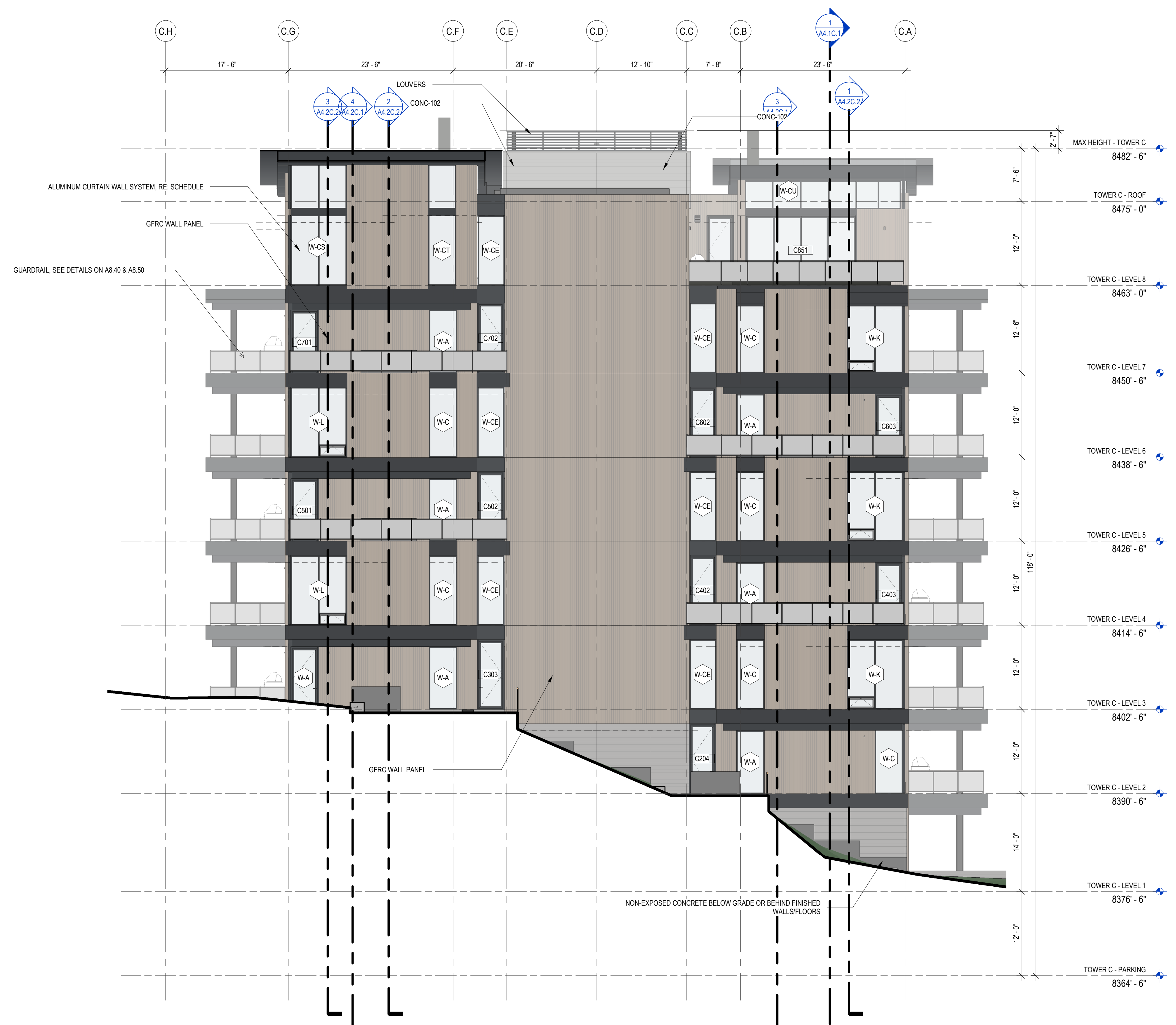
### MATERIAL LEGEND

- ARCHITECTURAL BOARD FORMED CONCRETE
- GFRC PANEL
- SHEET METAL SIDING PLATE ALUMINUM
- ALUMINUM WINDOW SYSTEM W-XX - SEE A0.7X SERIES
- GUARDRAIL 1

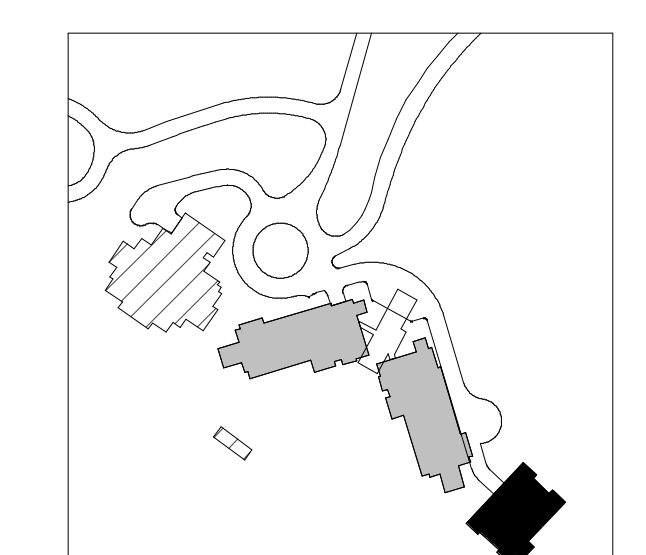
NOTE: REFER TO SPECIFICATION DOCUMENTS FOR INFORMATION REGARDING EACH FINISH MATERIAL



2 TOWER C - WEST  
SCALE: 1/8" = 1'-0"



1 TOWER C - EAST  
SCALE: 1/8" = 1'-0"



0 2' 4' 6' 8' 16' 24'