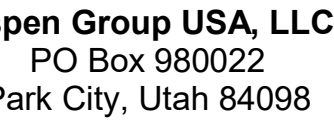


159 South Jackson St., Suite 600
Seattle, Washington 98104 USA
+1 206 624 5670 olsonkundig.com

Olson Kunding

project: **SOMMET BLANC**
9300 Marsac Ave (B2 East Parcel)
Park City, Utah 84060



Howard H20
96 N University Ave, Suite 290
Provo, UT 84604

3D Design
49 South High Tech Drive, Suite 100
Covale, Utah 84047

Day Group
Mainelli Road
Middlebury, VT

de Consultant
lmes
0 1st Avenue, Suite 200A
attle, WA 98104

John P. Hughes
Research Drive, Suite 305C
Westborough, MA 01581

Arch Bates
515 North Creek Parkway, Suite 300
Bellingham, WA 98011

Structural Engineer
Magnusson Klemencic Associates
101 5th Ave, Suite 3200
Seattle, WA 98101

Lighting Designer
19 SE MLK Blvd, Suite 210
Portland, Oregon 97219

Building Envelope Consultant
WH
 101 N 34th St
 Seattle, WA 98103

Accessibility Consultant
Radio Pacifica
44 Westlake Ave N, Suite F
Seattle, WA 98109

PE Engineer
SP USA
01 Fourth Ave., Suite 3100
Seattle, WA 98154

principal architect _____
project manager _____
drawn by _____
checked by Checker
job no. _____
date 05/31/2024

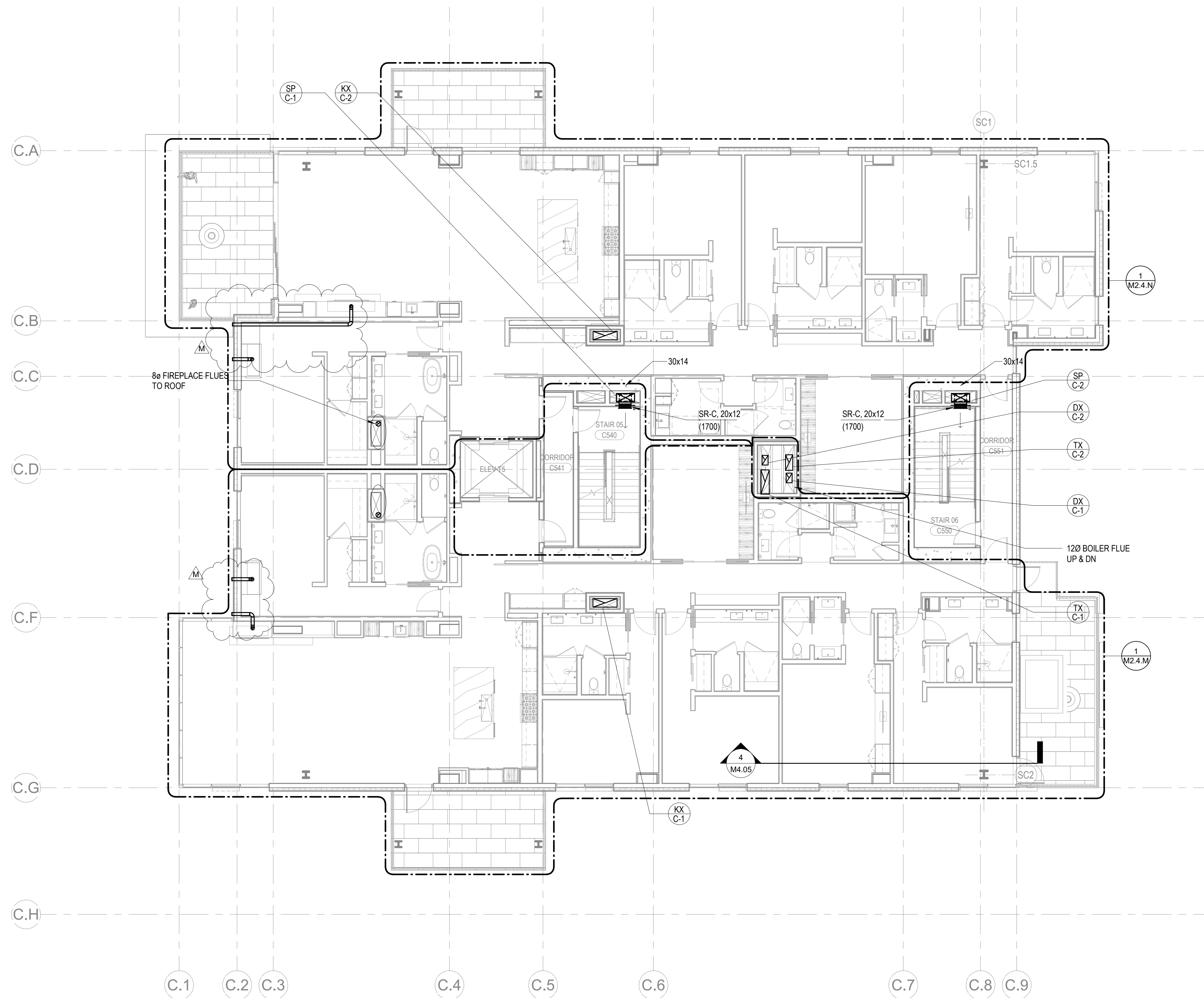
revisions:

4/7/2025	ASI 10
date	b

FC Set 3 of 3
05/31/2024

POWER C - LVL 5
MECHANICAL DUCT
PLAN

M2.2C.15



1 TOWER C - LEVEL 5 MECHANICAL DUCT PLAN
SCALE: 1/8" = 1'-0"

