

Olson Kundig

Olson Ku

project: **SOMMET BLANC**
9300 Marsac Ave (B2 East Parcel)
Park City, Utah 84060



principal architect _____
project manager _____
drawn by _____
checked by Checker _____
job no. _____
date 5/31/2024

[illegible]

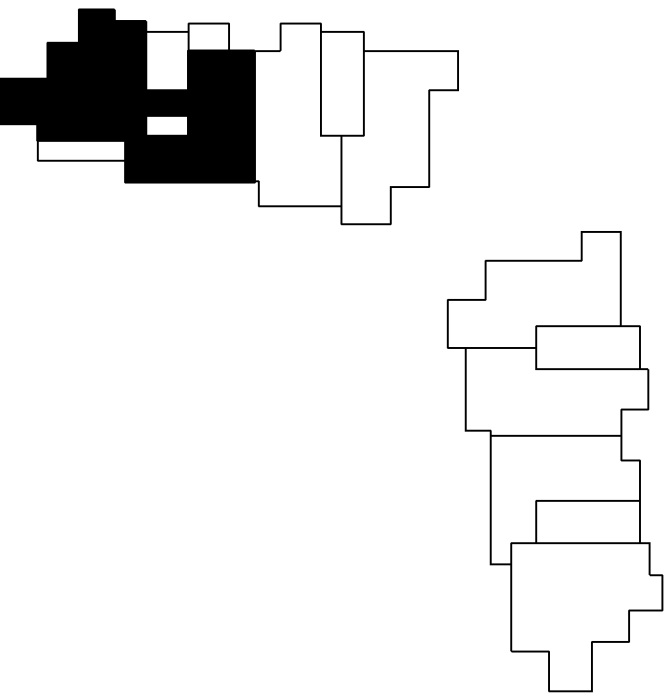
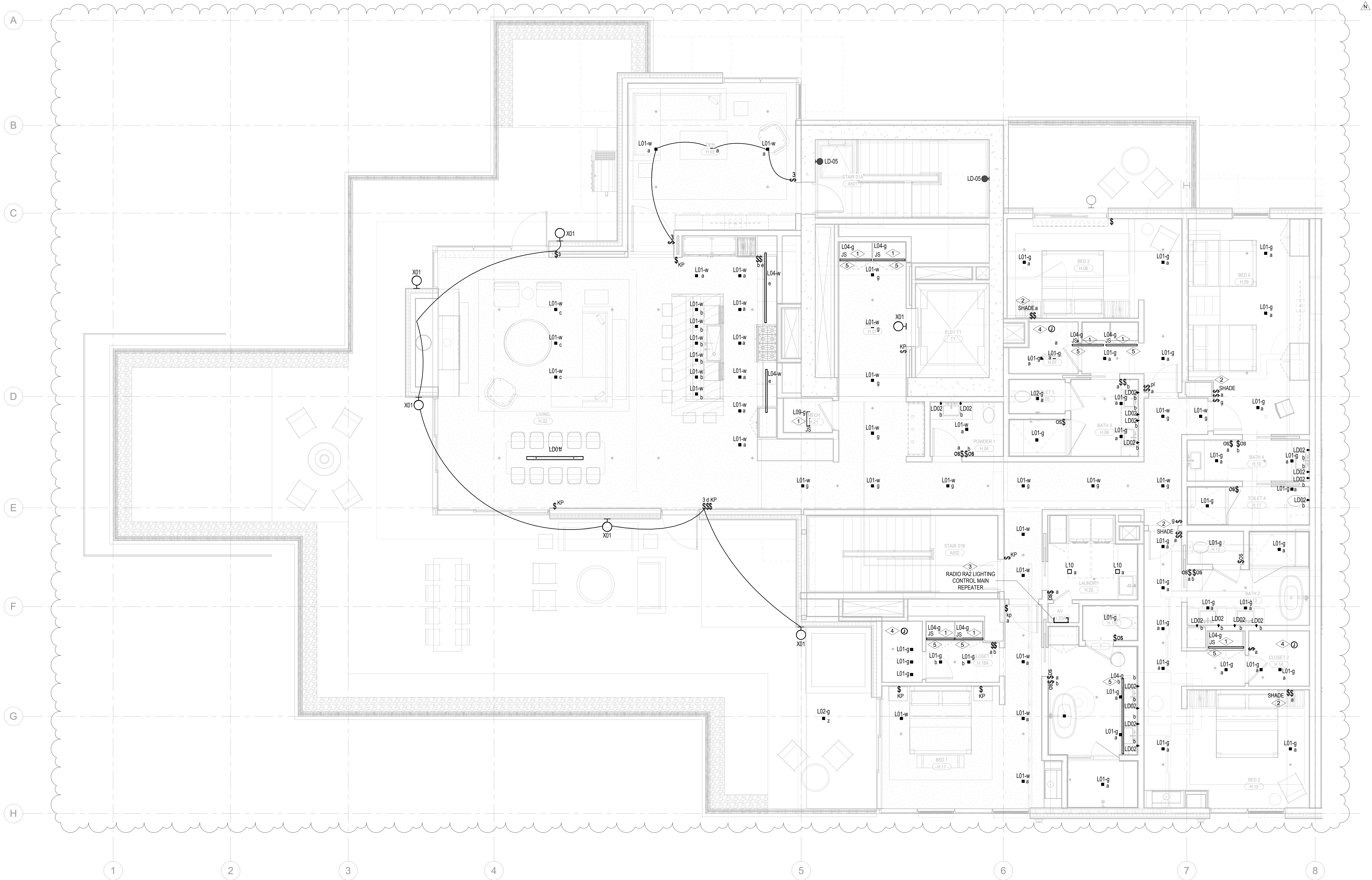
IFC Set 3 of 3
5/31/2024

POWER A/B ELECTRICAL
LIGHTING PLAN - UNIT H

E3.4.H

- A. DRAWINGS ARE INTENDED TO SHOW GENERAL ARRANGEMENT, DESIGN, AND EXTENT OF WORK AND ARE DIAGRAMMATIC. DRAWINGS ARE NOT INTENDED TO SHOW EXACT LOCATIONS. THE CONTRACTOR SHALL KEEP THE ARCHITECT ADVISED OF ANY CHANGES TO PLANS USING STANDARD INDUSTRY SYMBOLS. BEFORE ORDERING MATERIALS OR COMMENCEMENT WITH WORK, VERIFY MEASUREMENTS PERTAINING THERETO AND ASSURE CONSISTENCY WITH ALL OTHER INFORMATION OFFERED IN THE BIDDING. DRAWINGS AND CONDITIONS IN THE FIELD SHALL BE SUBMITTED TO THE CONSTRUCTION MANAGER FOR CONSIDERATION BEFORE PROCEEDING WITH WORK.
- B. WORK PERFORMED INCLUDES LABOR, MATERIALS, AND EQUIPMENT REQUIRED TO INSTALL A COMPLETE ELECTRICAL SYSTEM IN ACCORDANCE WITH THE CODES AND SPECIFICATIONS.
- C. PROVIDE EXIST SIGNS AND CONNECT EXIST SIGNS AND LUMINAIRES NOTED AS INSTALL TO EMERGENCY POWER SOURCE AS INDICATED ON PLANS.
- D. REFER TO THE ELECTRICAL CODES FOR ALL REQUIREMENTS.
- E. FIXTURE CATALOG NUMBERS ARE SUBJECT TO CHANGE BY MANUFACTURER. VERIFY FIXTURE CATALOG NUMBERS FOR ACCURACY.
- F. VERIFY EQUIPMENT SIZES AND POWER REQUIREMENTS FOR EQUIPMENT PROVIDED BY OTHERS.
- G. ELECTRICAL CONDUITS IN FINISHED SPACES SHALL BE CONCEALED. COORDINATE WITH OTHER TRADES AND USE CHASES AND CEILING SPACES. LOCATIONS OF ELECTRICAL JUNCTION BOXES IN FINISHED SPACES SHALL BE APPROVED BY ARCHITECT PRIOR TO ROUGH-IN.
- H. COORDINATE REMOTE DRIVER MOUNTING LOCATIONS WITH ARCHITECT PRIOR TO ROUGH-IN.
- I. COORDINATE LUMINAIRE VOLTAGE WITH ARCHITECT AND OWNER PRIOR TO PURCHASE AND INSTALLATION TYPE FOR ALL UNIT LIGHTING.

1. LIGHT FIXTURE LOCATED IN CLOSETS ARE TO BE CONTROLLED BY CLOSET DOOR JAMB SWITCH.
LUTRON WIRELESS PICO CONTROL SWITCH IS TO BE SUPPLIED AND INSTALLED FOR SHAW CONTROL.
2. SUPPLY AND INSTALL LUTRON RADIO RA2 SYSTEM TO PROVIDE PARTIAL LIGHTING IN THE RESIDENTIAL STUDY, MASTER BEDROOM (DESIGNED AS SED 1) AND ALL ROOMS WITH MORE THAN THREE (3) LIGHTING CONTROL ZONES ARE TO BE CONTROLLED BY THE LUTRON RADIO RA2 SYSTEM. ALL ROOMS WITH THREE (3) LIGHTING CONTROL ZONES OR LESS ARE TO BE CONTROLLED BY LOCAL DIMMERS.
3. SUPPLY AND INSTALL CEILING MOUNTED JUNCTION BOX COMPLETE WITH CAPPED LIGHTING CIRCUIT WIRING FOR INSTALLATION OF FUTURE CLOSET LIGHT FIXTURE.
4. REFER TO ARCHITECTURAL DRAWINGS AND ELEVATIONS FOR EXACT DIMENSION AND MOUNTING LOCATION OF LIGHT FIXTURE TYPE, LOC. COORDINATE WITH MILLWORK CONTRACTOR PRIOR TO INSTALLATION.



1 TOWER A/B - ELECTRICAL LIGHTING PLAN - UNIT H
SCALE: 1/4" = 1'-0"

SCALE: 1/4" = 1'-0"