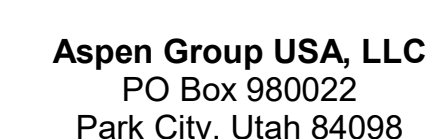


Reserved for permit stamp

159 South Jackson St, Suite 800
Seattle, Washington 98104 USA
1 206 624 5670 olsonkundig.com

Olson Kundig

Project: **SOMMET BLANC**
33300 Marsac Ave (B2 East Parcel)



Pool Consultant
Cloward H2O
2696 N University Ave, Suite 290
Provo, UT 84604

Landscape Architect
EPG Design
6949 South High Tech Drive, Suite 10
Midvale, Utah 84047

Specifications Writer
Friday Group
88 Mainelli Road
Middlebury, VT

Code Consultant
Holmes
600 1st Avenue, Suite 200A
Seattle, WA 98104

Fire Protection Engineer
Jensen Hughes
One Research Drive, Suite 305C
Warehorough, MA 01581

Vertical Transportation Consultant
Lerch Bates
19515 North Creek Parkway, Suite 300
Bothell, WA 98011

Structural Engineer
Magnusson Klemencic Associates
1301 5th Ave., Suite 3200
Seattle, WA 98101

Lighting Designer
O.
1319 SE MLK Blvd, Suite 210
Portland, Oregon 97216

Building Envelope Consultant
RDH
2101 N 34th St
Seattle, WA 98103

Accessibility Consultant
Studio Pacifica
2144 Westlake Ave N, Suite F
Seattle, WA 98109

MEP Engineer
WSP USA
1001 Fourth Ave., Suite 3100
Seattle, WA 98154

principal architect _____
project manager _____
drawn by _____
checked by Checker
job no. _____
date 05/31/2024

revisions:

N 5/2/2025 ASI-011 - WSP

no.	date	b
-----	------	---

IFC Set 3 of 3

05/31/2024

TOWER C ELECTRICAL
LIGHTING PLAN - UNIT L

E3.4.L

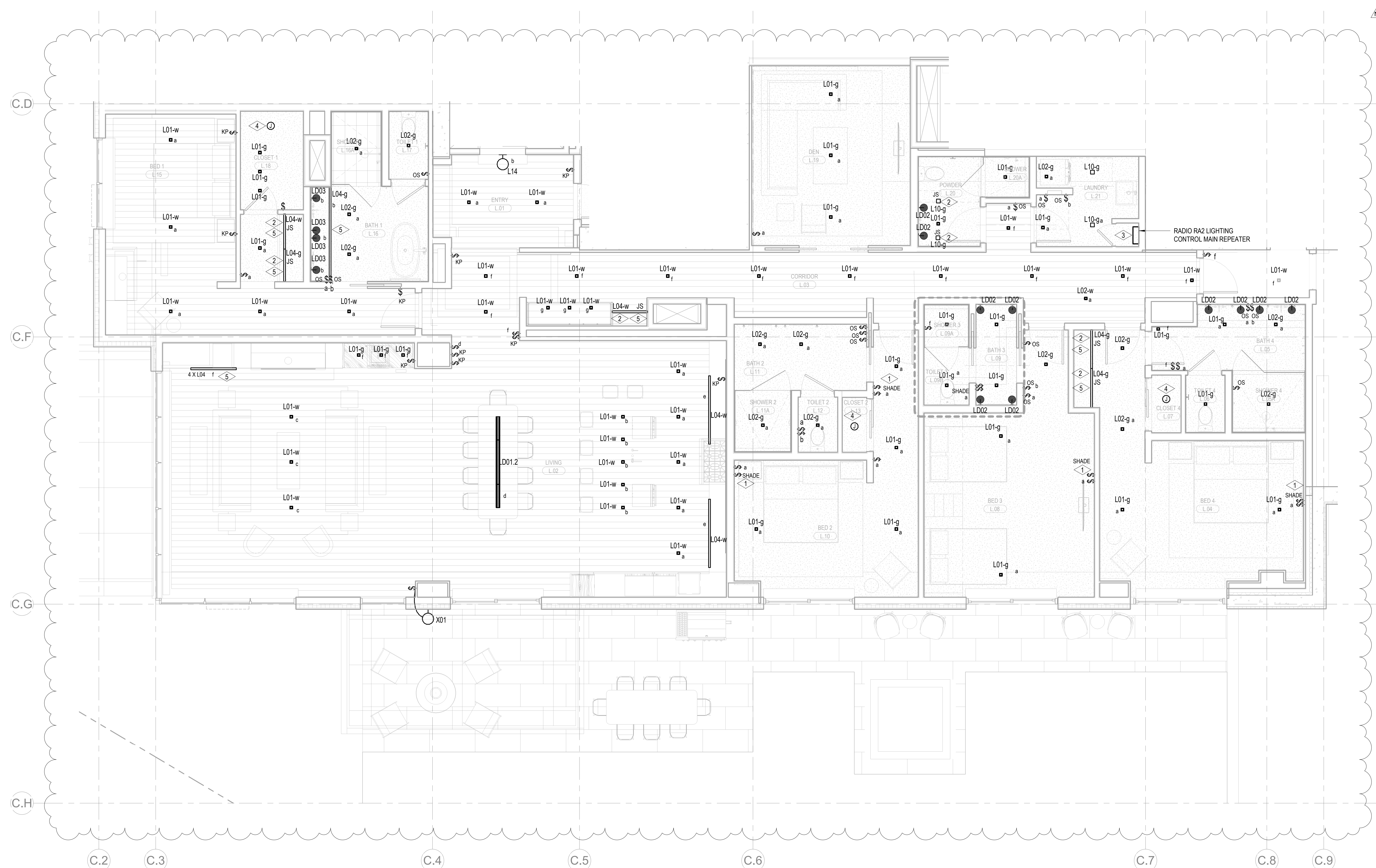
SHEET NOTES:

- A. DRAWINGS ARE INTENDED TO SHOW GENERAL ARRANGEMENT, DESIGN, AND EXTENT OF WORK AND ARE DIAGRAMMATIC. DRAWINGS ARE NOT INTENDED TO SHOW EXACT LOCATIONS EXCEPT WHERE DIMENSIONS ARE SHOWN. ELECTRICAL WORK IS SHOWN ON PLANS USING STANDARD INDUSTRY SYMBOLS. BEFORE ORDERING MATERIALS OR COMMENCEMENT WITH ANY MEASUREMENTS, THE CONTRACTOR SHALL VERIFY THE ACCURACY OF THE DRAWINGS. THEREFORE, ANY SUBSTANTIAL DIFFERENCES BETWEEN DRAWINGS AND CONDITIONS IN THE FIELD SHALL BE SUBMITTED TO THE CONSTRUCTION MANAGER FOR CONSIDERATION BEFORE PROCEEDING WITH WORK.
- B. POWER-RELATED WORK: RACKS, MATERIALS, AND EQUIPMENT REQUIRED TO INSTALL A COMPLETE ELECTRICAL SYSTEM AS INDICATED ON DRAWINGS AND SPECIFICATIONS. PROVIDE EXIST SIGNS AND CONNECT EXIST SIGNS AND LUMINAIRES NOTED AS EMERGENCY TO EMERGENCY POWER SOURCE AS INDICATED ON PLANS.
- C. PROVIDE LUMINAIRE SCHEDULES TO LUMINAIRE SPECIFICATIONS. VERIFY LUMINAIRE SCHEDULES AND FIXTURE CATALOG NUMBERS ARE SUBJECT TO CHANGE BY MANUFACTURER. VERIFY FIXTURE CATALOG NUMBERS FOR ACCURACY.
- D. VERIFY EQUIPMENT SIZES AND POWER REQUIREMENTS FOR EQUIPMENT PROVIDED BY OTHERS.
- E. ELECTRICAL CONDITIONS IN FINISHED SPACES SHALL BE CONCEALED. COORDINATE WITH OTHER TRADES AND USE FINISHES AND CEILING SPACES LOCATIONS OF ELECTRICAL DISTRIBUTION BOXES IN FINISHED SPACES SHALL BE APPROVED BY ARCHITECT PRIOR TO ROUGH IN.
- F. COORDINATE REMOTE DRIVER MOUNTING LOCATIONS WITH ARCHITECT PRIOR TO ROUGH IN. COORDINATE LUMINAIRE LOCATIONS WITH ARCHITECT AND OWNER PRIOR TO PURCHASE AND INSTALLATION TYPE FOR ALL LIGHTING.

NUMBERED NOTES:

- NUMBERED NOTES:**

 1. LUTRON WIRELESS PICO CONTROL SWITCH IS TO BE SUPPLIED AND INSTALLED FOR SHADE CONTROL.
 2. LIGHT FIXTURE LIGHTING IN CLOSETS ARE TO BE CONTROLLED BY CLOSET CLODGE JAM SWITCH
 3. SUPPLY AND INSTALL LUTRON RADIO RA2 SYSTEM TO PROVIDE PARTIAL LIGHTING CONTROL IN THE RESIDENTIAL UNITS. MASTER BEDROOM (DENOTED AS BED 1) AND ALL ROOMS WITH MORE THAN THREE (3) LIGHTING CONTROL ZONES ARE TO BE CONTROLLED BY THE LUTRON RADIO RA2 SYSTEM. ALL ROOMS WITH THREE (3) LIGHTING CONTROL ZONES OR LESS ARE TO BE CONTROLLED BY LOCAL DIMMERS.
 4. SUPPLY AND INSTALL CEILING MOUNTED JUNCTION BOX COMPLETE WITH CAPPED LIGHTING CIRCUIT WIRING FOR INSTALLATION OF FUTURE CLOSET LIGHT FIXTURE.
 5. REFER TO ARCHITECTURAL DRAWINGS AND ELEVATIONS FOR EXACT DIMENSION AND MOUNTING LOCATION OF LIGHT FIXTURE TYPE AND LOCATION. CONTRACTOR RESPONSIBLE FOR INSTALLATION.



1 TOWER C - ELECTRICAL LIGHTING UNIT PLAN - L

